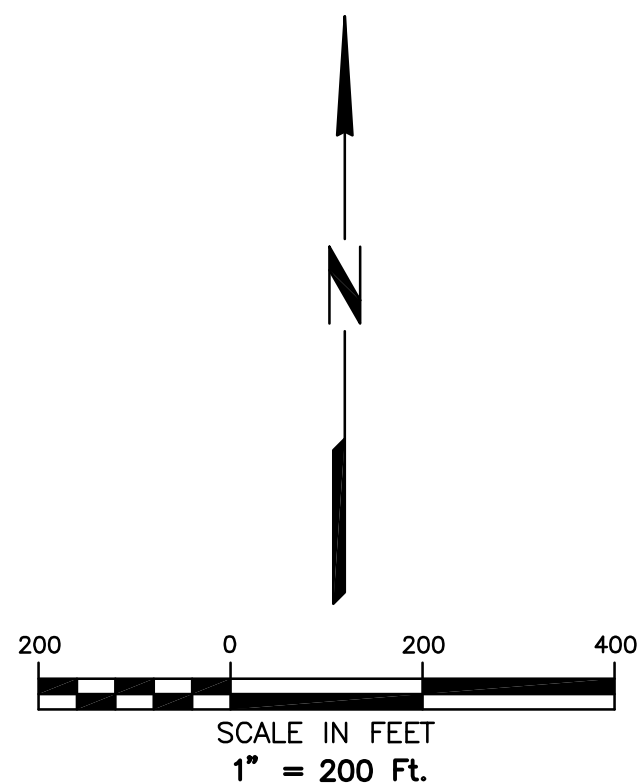


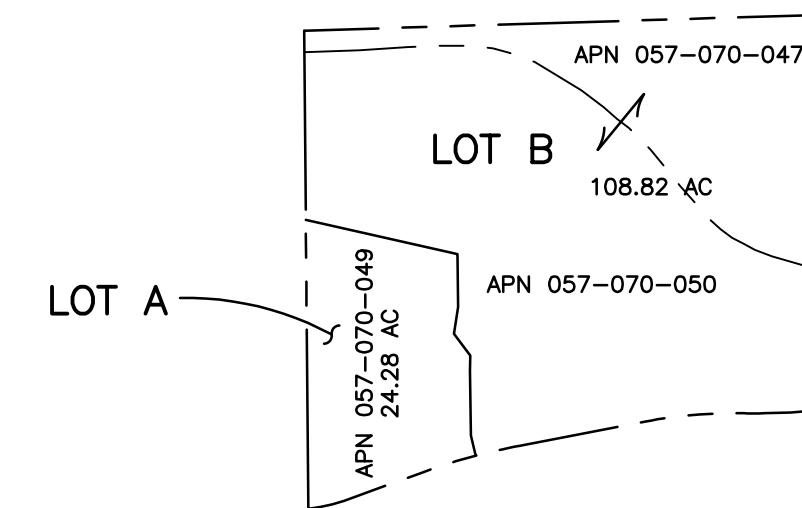
**LOT A**  
 OWNERS: JACKSON FAMILY INVESTMENTS III, LLC.  
 DOC NO. 2012-123635  
 APN'S 057-070-049  
 EXISTING SIZE: 24.28 ACRES±  
 PROPOSED SIZE: 24.08 ACRES±

**LOT B**  
 OWNERS: JACKSON FAMILY INVESTMENTS III, LLC.  
 DOC NO. 2012-123634  
 APN'S 057-070-047 AND 050  
 EXISTING SIZE: 108.82 ACRES±  
 PROPOSED SIZE: 109.01 ACRES±

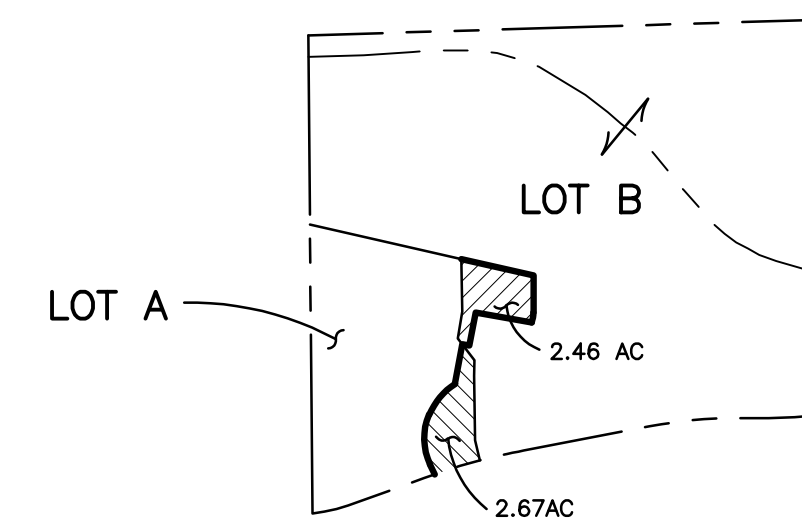


**LEGEND**

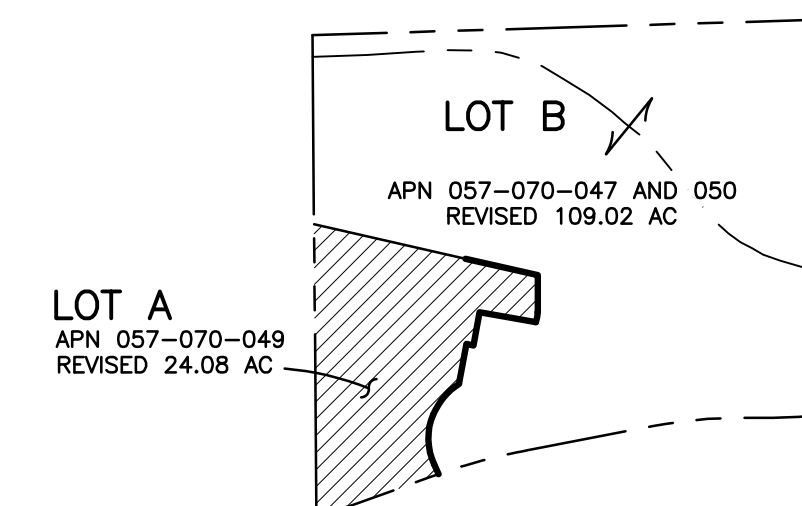
- EXISTING BOUNDARY LINE
- EXISTING TAX RATE LINE
- EXISTING LOT LINE TO BE ADJUSTED
- PROPOSED LOT LINE



EXISTING CONFIGURATION



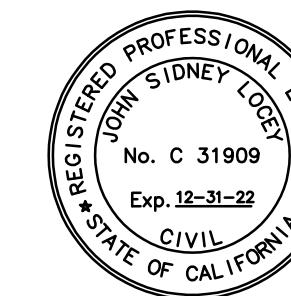
PROPOSED LOT LINE ADJUSTMENTS



PROPOSED CONFIGURATION

**Brelje & Race**

CONSULTING ENGINEERS  
 475 Aviation Boulevard, Suite 120  
 Santa Rosa, CA 95403  
 v: 707-576-1322  
 f: 707-576-0469  
 www.brce.com



**TASTING ROOM AT NUNES FARM & WINERY AT SARALEE'S VINEYARD**

4255 RIVER ROAD  
 3400 SLUSSER ROAD  
 3351 SLUSSER ROAD  
 SONOMA COUNTY, CALIFORNIA

REVISIONS

NO.	DATE	DESCRIPTION

ON A FULL-SCALE DRAWING, LENGTH OF BAR BELOW IS 1-INCH. IF BAR MEASURES LESS THAN 1-INCH, THIS SHEET WAS PLOTTED AT A REDUCED SCALE, WHICH MAY REQUIRE ADJUSTMENT OF SCALE(S) SHOWN ON DRAWING.

PROJECT 3719.10	DATE APRIL 2022
DRAWN BY JS/TR	CHECKED BY DS

**LOT LINE ADJUSTMENT OVERALL SITE PLAN**

SHEET

**1**

1 OF 1