

PJR 128 | 12 - MATERIALS & COLORS

RESIDENTIAL MATERIALS

Wood Siding



Stained Wood Siding



Concrete (Poured)



Corten Steel



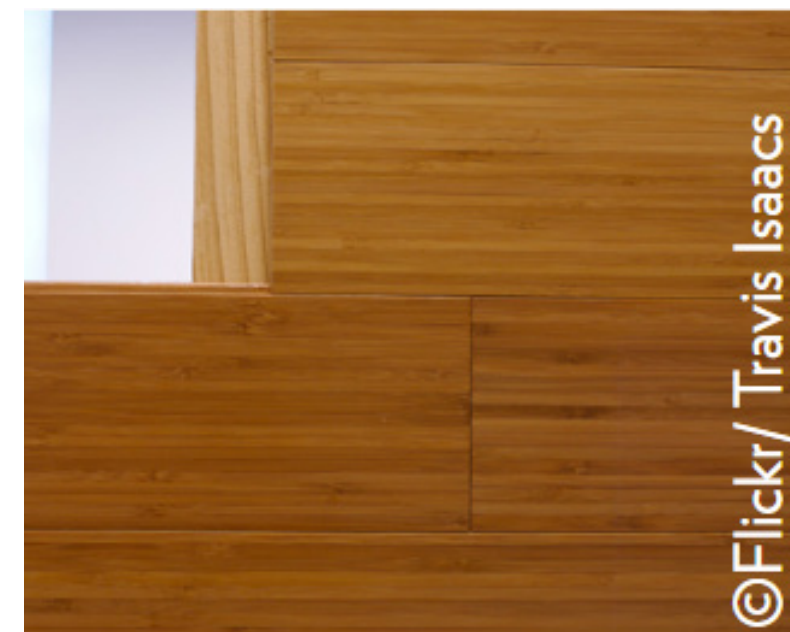
Stone / Cast Stone



Fiber Cement Lap Siding



Bamboo Siding



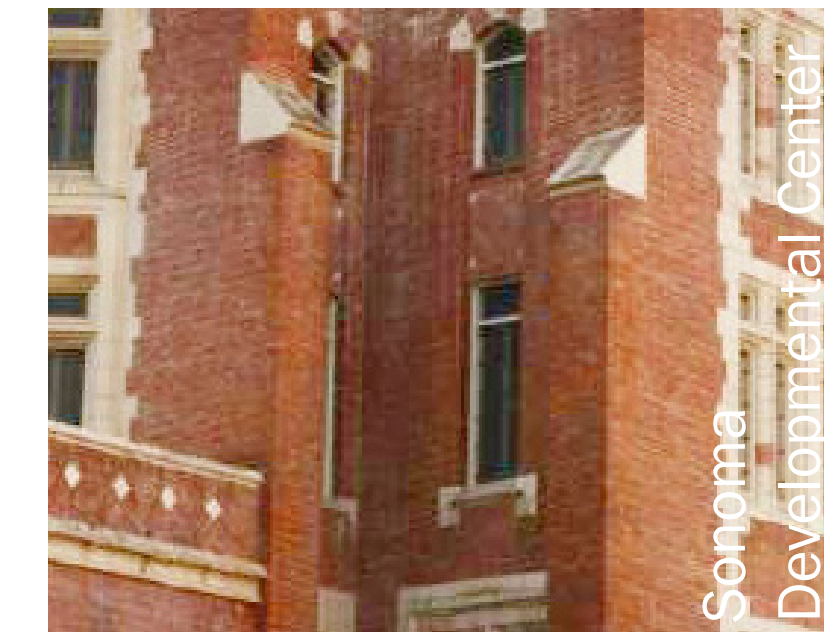
Ceramic Tile



Metal Panels



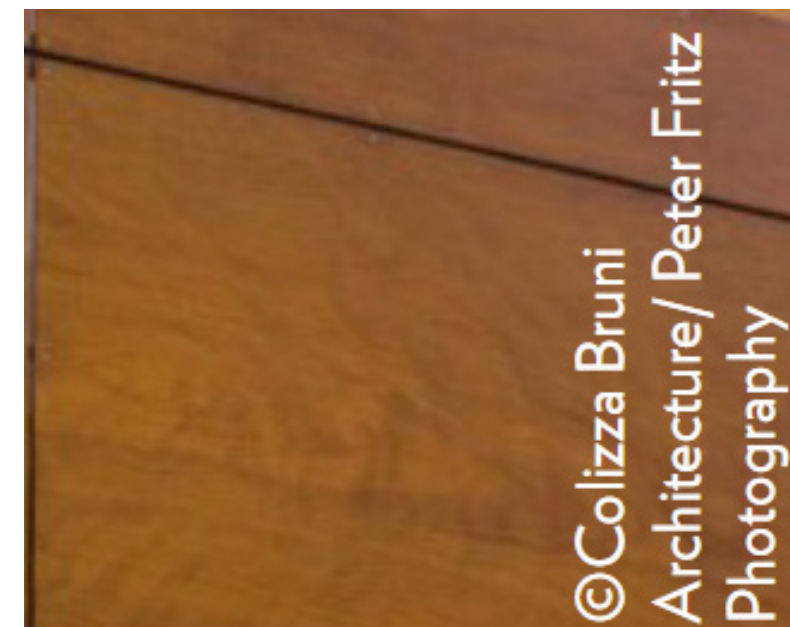
Brick



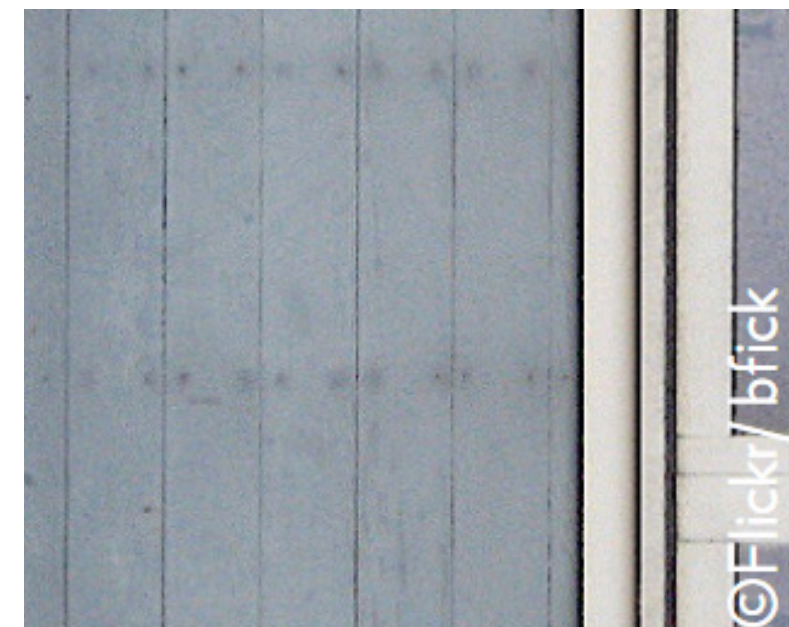
Wood Slats



Plywood (exterior grade)



Cement Board



Corrugated Metal



Clay Tile



Wood Shingles



Stucco



High Density Laminate



Metal Shingles

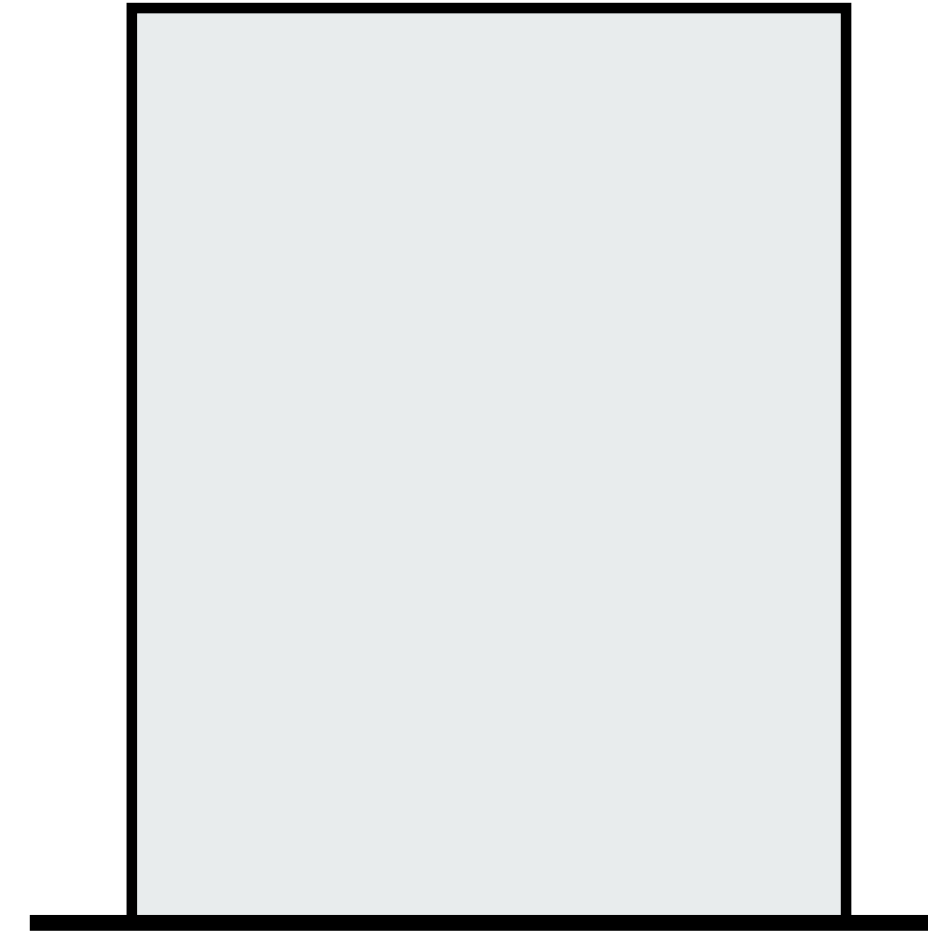


Terracotta

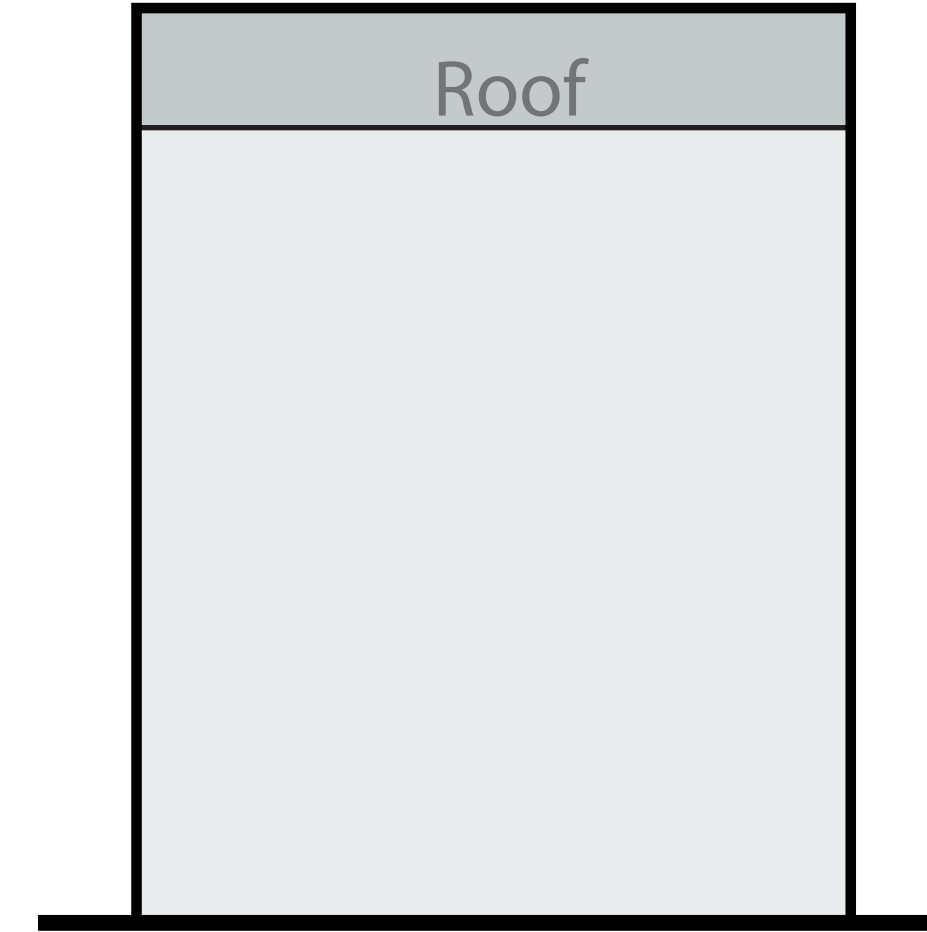


Other materials in line with Specific Plan (4-21) and the local context are encouraged

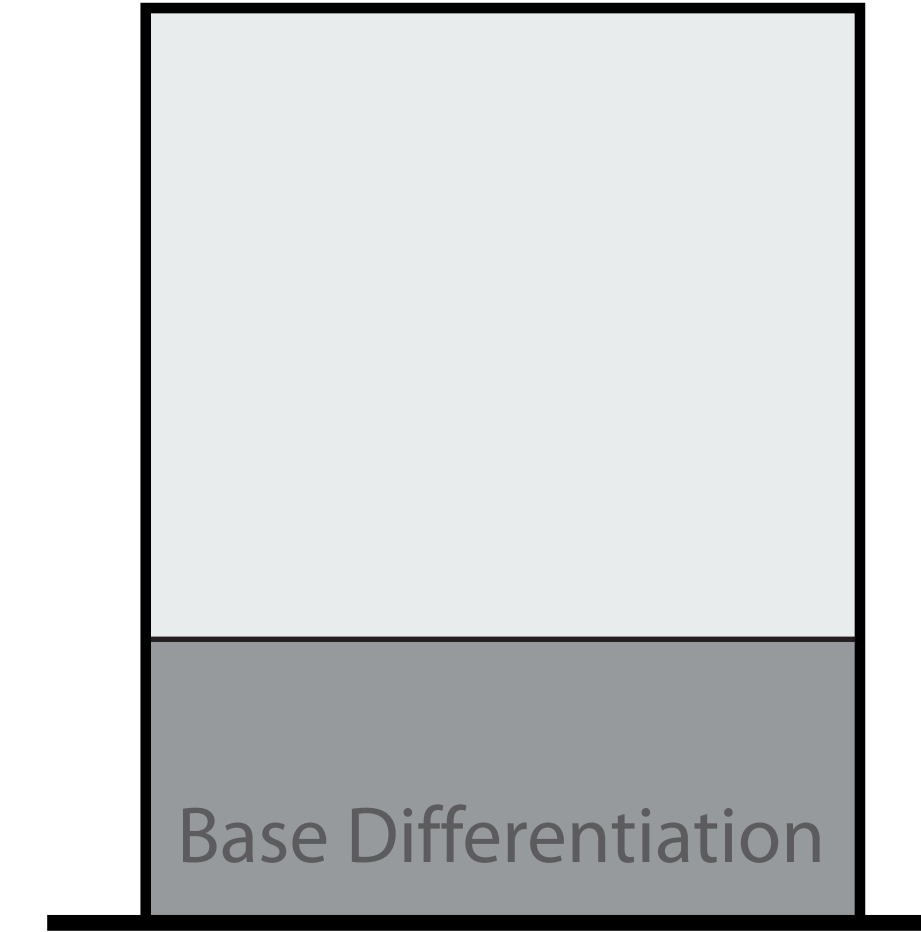
Flat Roof with Parapet*



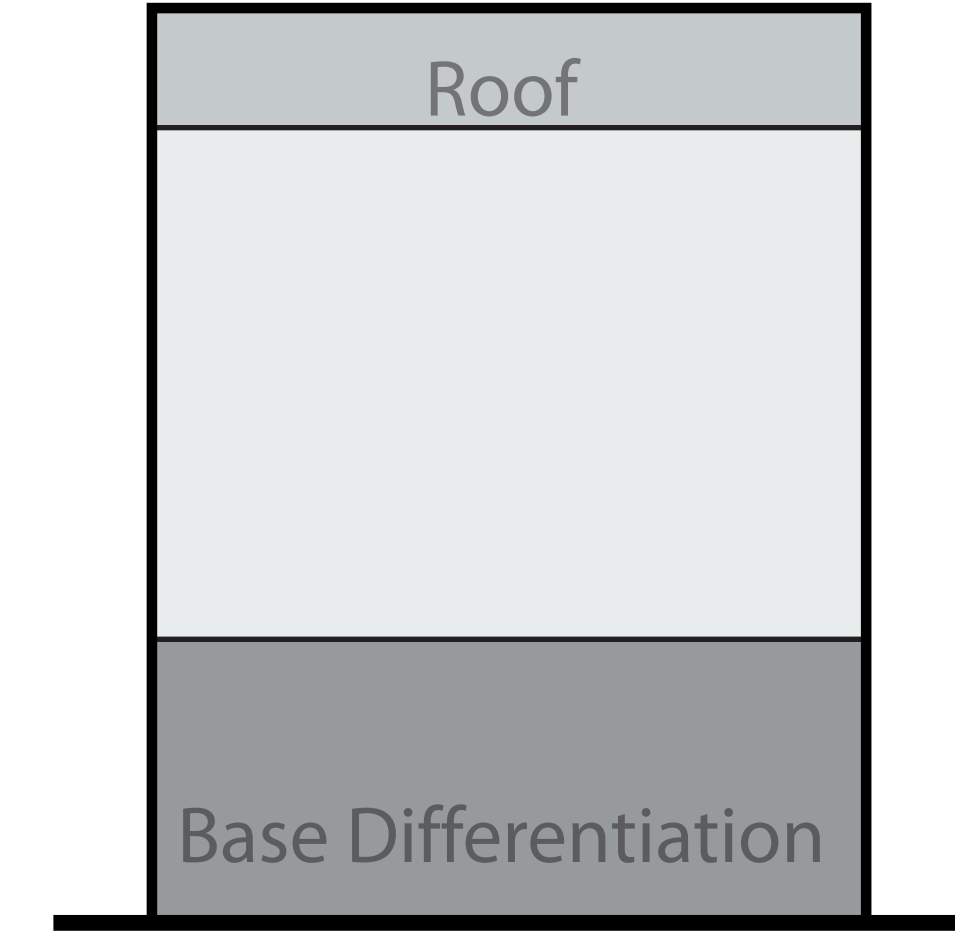
Other Roof Types*



Flat Roof with Base Differentiation*



Other Roof Types with Base Differentiation



**Recommended Materials
Facade (no base articulation)**

Facade

- Bamboo
- Fiber Cement Board
- Glass
- Metal Panel
- Corrugated Metal
- Plywood (exterior grade)
- High Density Laminate
- Stucco
- Wood Siding
- Wood Shingles
- Wood Slats/Screens
- Structural Steel Components
- Metal Screens
- Metal Slats
- Metal Panels
- Cement Board
- Terracotta Siding
- Concrete (Pre-cast)
- Concrete (Poured)
- Brick
- Stone Veneer, Cast Stone
- Slate Tile

**Recommended Materials
Facade (with base articulation)**

Facade (Upper)

- Bamboo
- Fiber Cement Board
- Glass
- Metal Panel
- Corrugated Metal
- Plywood (exterior grade)
- High Density Laminate
- Stucco
- Wood Siding
- Wood Shingles
- Wood Slats/Screens
- Structural Steel Components
- Metal Screens
- Metal Slats
- Metal Panels
- Terracotta Siding

Facade (Lower)

- Cement Board
- Concrete (Pre-cast)
- Concrete (Poured)
- Brick
- Stone Veneer, Cast Stone
- Slate Tile
- Stucco
- Metal Panel
- Glass
- Plywood (exterior grade)

**Recommended Materials
Roof**

- Standing Seam Metal
- Composition Shingles
- V-crimp Metal Panels
- Corrugated Metal Sheets
- Clay Tile
- Wood Shingles
- Asphalt Shingles
- Green Roofs

Other materials in line with Specific Plan (4-21) and the local context are encouraged

NON-RESIDENTIAL MATERIALS

Wood Siding



Polycarbonate



Concrete (Poured)



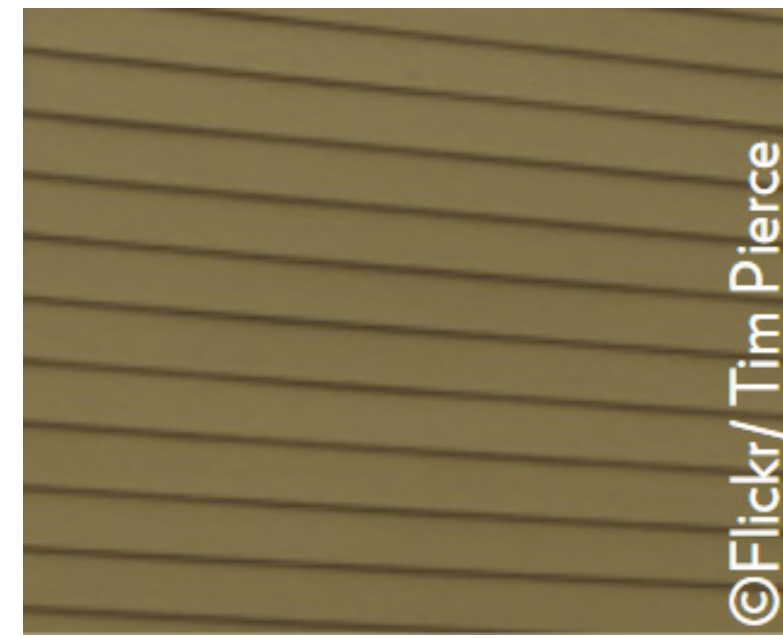
Corten Steel



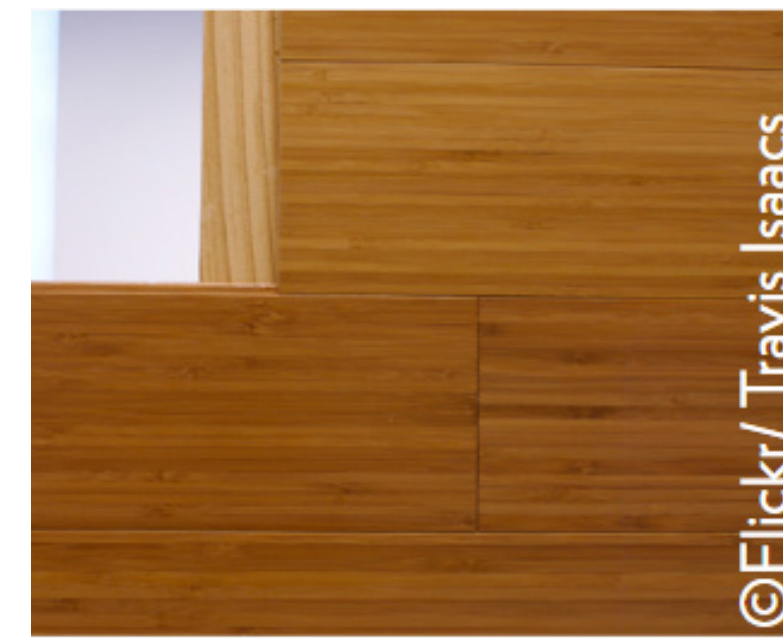
Stucco



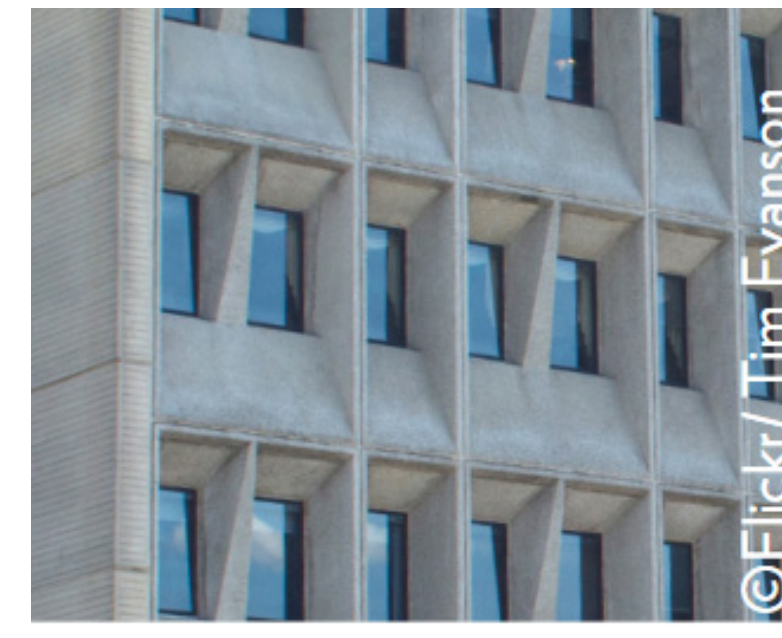
Fiber Cement Lap Siding



Bamboo Siding



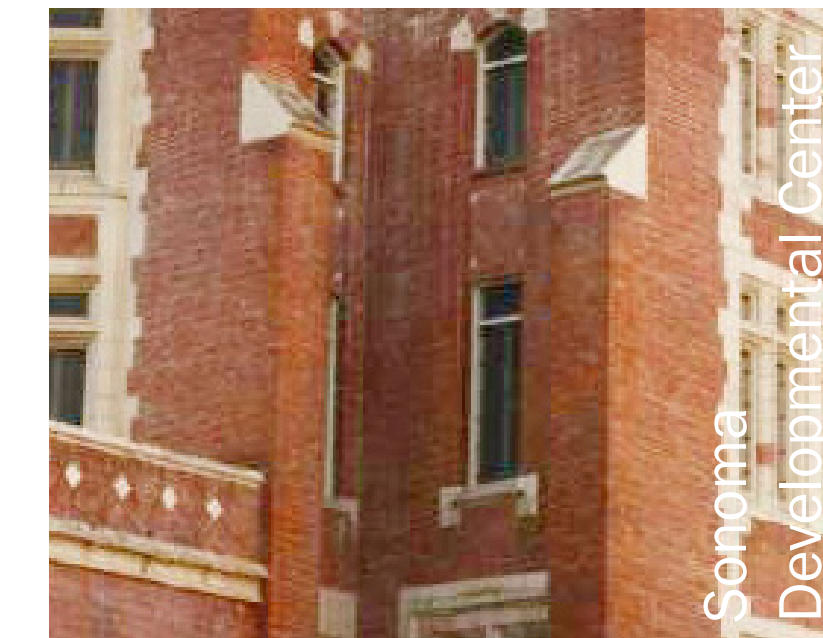
Concrete (Pre-Cast)



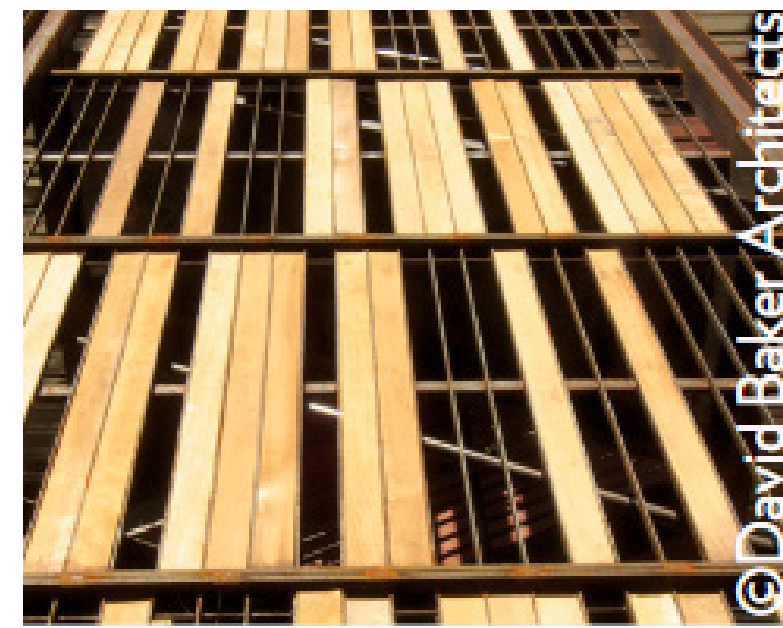
Metal Panels



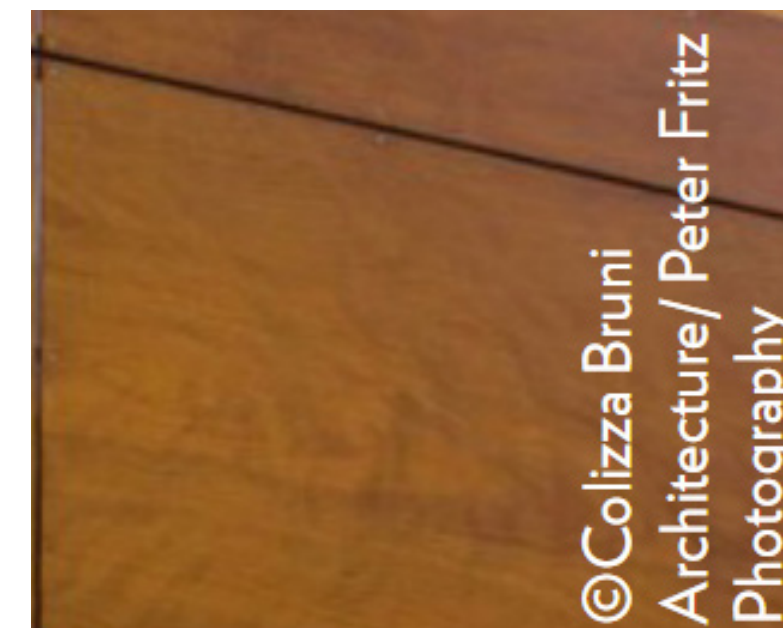
Brick



Wood Slats



Plywood (exterior grade)



Cement Board



Corrugated Metal



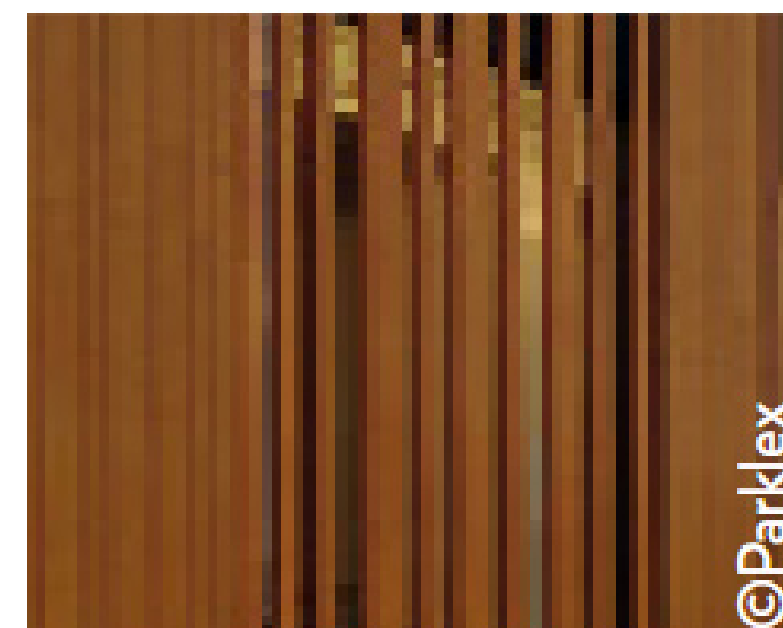
Clay Tile



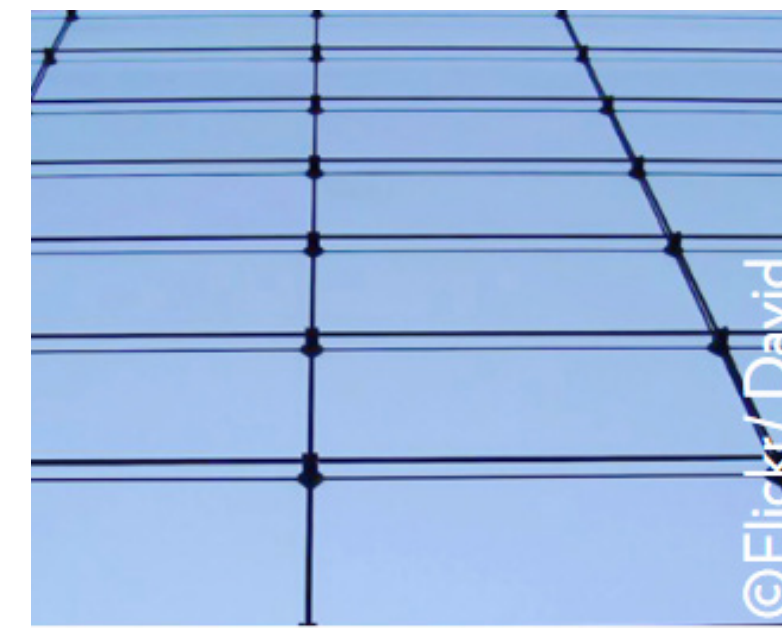
Wood Shingles



High Density Laminate



Glass



Metal Screen



Terracotta



Other materials in line with Specific Plan (4-21) and the local context are encouraged

Flat Roof with Parapet*



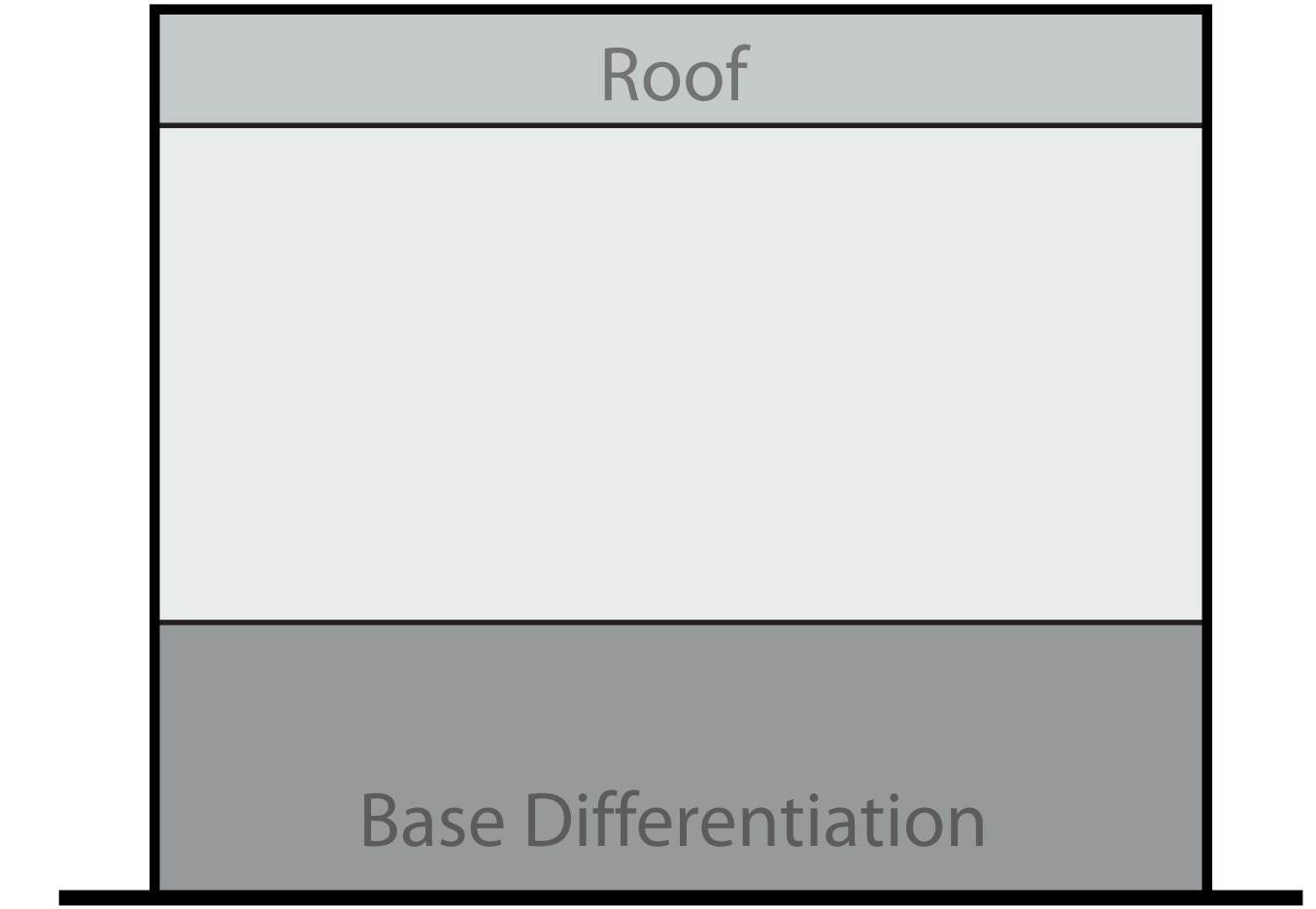
Other Roof Types*



Flat Roof with Base Differentiation*



Other Roof Types with Base Differentiation



**Recommended Materials
Facade (no base articulation)**

Facade

- Bamboo
- Fiber Cement Board
- Glass
- Metal Panel
- Corrugated Metal
- Plywood (exterior grade)
- High Density Laminate
- Stucco
- Wood Siding
- Wood Shingles
- Wood Slats/Screens
- Structural Steel Components
- Metal Screens
- Metal Slats
- Metal Panels
- Cement Board
- Terracotta Siding
- Concrete (Pre-cast)
- Concrete (Poured)
- Brick
- Stone Veneer, Cast Stone
- Slate Tile

**Recommended Materials
Facade (with base articulation)**

Facade (Upper)

- Bamboo
- Fiber Cement Board
- Glass
- Metal Panel
- Corrugated Metal
- Plywood (exterior grade)
- High Density Laminate
- Stucco
- Wood Siding
- Wood Shingles
- Wood Slats/Screens
- Structural Steel Components
- Metal Screens
- Metal Slats
- Metal Panels
- Terracotta Siding

Facade (Lower)

- Cement Board
- Concrete (Pre-cast)
- Concrete (Poured)
- Brick
- Stone Veneer, Cast Stone
- Slate Tile
- Stucco
- Metal Panel
- Glass
- Plywood (exterior grade)

**Recommended Materials
Roof**

- Standing Seam Metal
- Composition Shingles
- V-crimp Metal Panels
- Corrugated Metal Sheets
- Clay Tile
- Wood Shingles
- Asphalt Shingles
- Green Roofs

Other materials in line with Specific Plan (4-21) and the local context are encouraged