

# WEST COUNTY TRANSPORTATION

## BUS and AUTOMOBILE PARKING EXPANSION 3300 Juniper Avenue

### BUILDING PERMIT REVIEW ITEMS:

- Site Lighting with Pole Bases
- Site Convenience Receptacles
- EV Charging Stations
- Electrical Service / Main Switchboard
- Future Conduits for PV and Security
- Fencing and Gates
- Electric Operated Gates

02



200 E. STREET  
Suite 100  
Santa Rosa, CA 95404  
Tel: (707) 544-3900  
Fax: (707) 544-2514

© Copyright 2020



West County  
Transportation  
3300 JUNIPER AVENUE, SANTA ROSA, CA

TITLE SHEET, GENERAL NOTES  
SYMBOLS, ABBREVIATIONS

Job No: G1605  
Drawn By: JB / DZ  
Checked By: CS  
Cad File: 001  
Date: 6.24.20

Revisions  
PRM# Revisited 01  
January 2021  
PRM# Revisited 02  
February 2021

Sheet Number

G0.1

1 of 48

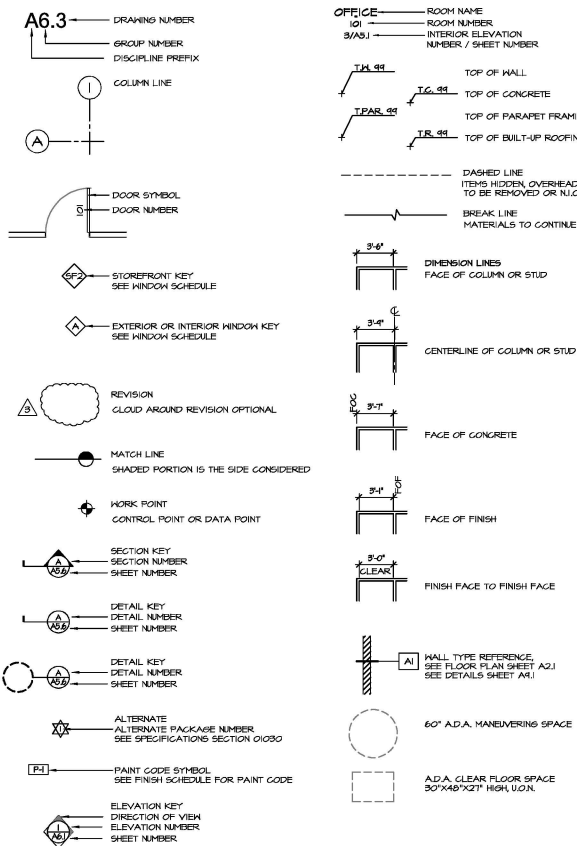
### GENERAL NOTES:

- The Project is located at 3300 Juniper Avenue, Santa Rosa, CA and generally consists of a new parking lot for buses and automobiles, perimeter fence, site lighting, landscaping and site utilities. Future Work may include Photovoltaic System.
- All new construction shall be governed by applicable codes and ordinances of the County of Sonoma, including all applicable State and Federal regulations, and it shall be the responsibility of each subcontractor to be in full compliance regardless of any discrepancies that may exist with the drawings or specifications. It shall be the responsibility of each subcontractor to contact the General Contractor who, in turn shall contact the Architect prior to performance. If a conflict exists between portions of the documents or work and applicable codes and ordinances, or any other apparent conflicts or discrepancies with the drawings or specifications:
- Construction activity may occur between the hours of 7:00 a.m. and 5:00 p.m. Monday through Friday.
- These drawings shall not be scaled. All work shall be governed by the dimensions indicated on the drawings. Any discrepancies shall be brought to the attention of the General Contractor and the Architect prior to proceeding with the work.
- All references to "Contractor" shall include and apply to all subcontractors to whom such applications for work they are performing under their subcontract.
- All dimensions are to centerlines of structural steel and face of framing or concrete unless otherwise noted. "Clear" dimensions are to face of finish.
- Details not specifically shown shall be of the same nature as other similar conditions so detailed.
- Not used.
- Coordinate all equipment and fixture requirements with the Owner.
- All restroom shall conform to the 2018 California Building Code and the Americans with Disabilities Act of 2010. Vandal or toilet restroom door symbols per the California State Code and the Americans with Disabilities Act (ADA). Existing nearest restrooms available to the bus drivers are in the Driver's Lounge on the adjacent property designed, approved and constructed to meet disabled access codes in 2014. Improvements by Stone Architects.
- Exit doors shall be operable from the inside without the use of a key or any special knowledge or effort.
- The Americans with Disabilities Act (ADA) is subject to various and possibly contradictory interpretations. These plans and specifications represent the designer's opinion regarding its interpretation of the ADA on it applies to the subject project, but it not in any way a warranty or guarantee that said plans comply with any or all possible interpretations of the ADA by others.
- Contractor shall maintain the job site at all times and available for the Inspector's review approved copies of all manufacturer's data, cut sheets, material submittals and samples for all materials, finishes, products, and systems used on the project.
- All work shall conform to the Geotechnical Reports performed by Bauer Associates. Original report dated October 14, 1991. Supplemental report dated May 17, 2007. Plan review letter dated July 31, 2020.

### CODES

CALIFORNIA BUILDING CODE	2018 Edition
CALIFORNIA FIRE CODE	2018 Edition
CALIFORNIA MECHANICAL CODE	2018 Edition
CALIFORNIA PLUMBING CODE	2018 Edition
CALIFORNIA ELECTRICAL CODE	2018 Edition
CALIFORNIA GREEN BUILDING STANDARDS CODE	2018 Edition
ALL LOCAL AMENDMENTS TO THE ABOVE CODES	

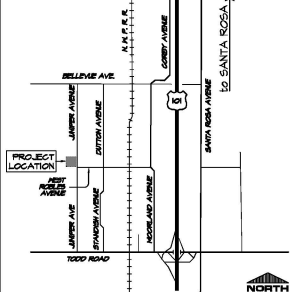
### ARCHITECTURAL GRAPHIC SYMBOLS



### GRAPHIC SYMBOLS NOTES

- Graphic Symbols represent objects, elements, equipment, instructions, location, conventions, etc. They do not represent the shape, size or dimension of the actual object.
- Each drawing group (e.g. Mechanical, Electrical) has its own symbols, abbreviations, legend and notes. The information and symbols on this drawing are general and apply to architectural drawings.

### LOCATION MAP



### CONSULTANT LIST

<b>CIVIL</b> IDA ENGINEERS 225 Sonoma Avenue Santa Rosa, CA 95404 Damon Morelli (707) 544-0784 (Voice)	<b>LANDSCAPE</b> STEPHANIE KACALISTE 105 Keller Street Petaluma, CA 94452 Stephanie Kacaliste (707) 718-1648 (Voice)
<b>STRUCTURAL</b> ZEA STRUCTURAL ENGINEERS 1212 Fourth Street Suite 2 Santa Rosa, CA 95404 Luke Wilson (707) 526-0442 (Voice)	<b>ELECTRICAL</b> DORRIS & MYER 4340 Redwood HWY Suite 245 San Rafael, CA 94403 Justin Kirk (415) 482-0420 (Voice)

### ABBREVIATIONS

AB. Anchor Bolt	FBR Fire Sprinkler Riser	R or RAD Radial
AC Acoustic Concrete	FIN Finished	RA Return Air
ACCUS Acoustical	FLR Floor	RD Roof Drain
AD Area Drain	FCC Face of Curb or Concrete	REF Refrigerator or Reference
ADJ. Adjacent or Adjustable	FOM Face of Masonry	REIN Reinforcing
ADA Americans with Disabilities Act	FOS Face of Slab	REQ Required
AFS Above Finished Floor	FTS Footing	REV Reversed or Reversed
AGG Aggregate	FUR Furring	RO Rough Opening
ALUM Aluminum	FVC Fabric Vail Covering	RS Roughness
APPROX. (Approximately)	GA Galvalume	RSD Rakehead
ARCH. Architect, Architectural	GB Glue	RSL Riser Leader
ASST. Assistant	GLB Glue Laminated Beam	SAP Sheet 1 Pole
AT	GSM Galvanized Sheet Metal	SA Supply Air
B Board or Bead	GRD Grade	SAB. See Submittal Drawings
BETHN. Between	GRD. Graded	SAD. Solid Core
BLDG. Building	GRD. Graded	SC Solid Core
BLK Blocking	GRD. Graded	SCD See Civil Drawings
BOT Bottom	GRD. Graded	SD Storm Drain
BUR Built up Roof	GRD. Graded	SED See Electrical Drawings
CB Catch Basin	HC Hose Bibb	SE or S Square Foot/Ft
CBBS Cementitious Backer Board	HD High Density (steel) or Heavy Duty	SHF Shower
CEM Cement	HDR Header	SHR Sheathing
CI Curb Inset or Cast Iron Construction Joint	HGR Hanger	SH Senior
CL or C. Centerline	HORIZ Horizontal	SMD See Mechanical Drawings
CL Chain Link	HR Hour	SMS Sheet Metal Screw
CLS Ceiling	HRS Hollow Structural Section	SP Spacing
CLD. Closet	HVAC Heating, Ventilating & Air Conditioning	SPD See Plumbing Drawings
CLR Clear	HWD Hardwood	SQ Square
CMU Concrete Masonry Units	INSUL Insulation	SQ. Square Steel
CONC. Concrete	INT Interior	STC Sound Transmission Coefficient
CONC. Construction	J or JAN Janitor	STD Standard
CONT. Continuous	JUT Jamb	STL Steel
CONR Conductor	KIT Kitchen	STR Storage
CSK Countersink	LAV Lavatory	SUP Support (symmetrical)
CSK Countersink	LAV Light Edge Metal (Framing)	SYM Symmetrical
D.A. Designated Accessible	LOC Location	T-24 Top and Bottom
DBL Double	LWT Lightweight	T&B Top of Concrete or Curb
DF Double for Drinking Fountain	MAX Maximum	TEL Telephone
DI or D. Diameter	MEB Machine Bolt	TOC Top of Concrete
DIAS. Diagonally	MED Medium Density Overlay	T.O.P. Top of Paving
DISP. Disposal	MECH Mechanical	TOS Top of Steel
DN Down	MEZZ Mezzanine	TOIL Toilet
DR Door	MFR Manufacturer's	TYP Typical
DR. Door	MIN Minimum	UNO Unless Noted Otherwise
DPS Downspout	MIR Moisture Resistant	VAR Varies
DWS Dishwasher	MN Metal	VER Vertical
DWS Drawing	NU New	VFI Verrily in Field
EJ Existing	NO Not in Contract	VNC Vinyl Plid Covering
EA Exterior	NTS Not to Scale	W/ With
EIPB Exterior Insulation & Finish System	OC On Center	W/ Holder Closet
EJ Elevation	OC. On Center	W/ Head
ENGR Engineer or Engineered	OPN Opening	W/ Holder
EQ Equal	OPNS Opposite	W/ Header
EQUIP Equipment	OPNS Opposite	W/ Without
ESL Each Side	OPNS Opposite	W/ Height
EWC Electric Water Cooler	PT Property Line	W/ Waterproofing
EXT Exterior	PIV Piston Indicator Valve	W/ Waterproofing
FAU Forced Air Unit	PLAM Plastic Laminate	
FDN Foundation	PLYWOOD Plywood	
FEK Fire Extinguisher Cabinet	PTD Painted	
FG Fresh Grade or Fixed Glass	PTD Painted	
	PTD Pressure Treated	

California Code of Regulations, Title 24	T-24 Top and Bottom
T&B Top of Concrete or Curb	T&B Top and Bottom
TEL Telephone	TEL Telephone
TOC Top of Concrete	TOC Top of Concrete
T.O.P. Top of Paving	T.O.P. Top of Paving
TOS Top of Steel	TOS Top of Steel
TOIL Toilet	TOIL Toilet
TYP Typical	TYP Typical
UNO Unless Noted Otherwise	UNO Unless Noted Otherwise
VAR Varies	VAR Varies
VER Vertical	VER Vertical
VFI Verrily in Field	VFI Verrily in Field
VNC Vinyl Plid Covering	VNC Vinyl Plid Covering
W/ With	W/ With
W/ Holder Closet	W/ Holder Closet
W/ Head	W/ Head
W/ Holder	W/ Holder
W/ Header	W/ Header
W/ Without	W/ Without
W/ Height	W/ Height
W/ Waterproofing	W/ Waterproofing
W/ Waterproofing	W/ Waterproofing

### PROJECT DATA

<b>LOCATION:</b> 3300 Juniper Avenue Santa Rosa, CA	<b>T-24</b> Top and Bottom
<b>A.P. NUMBER:</b> 104-074-022	<b>T&amp;B</b> Top of Concrete or Curb
<b>PARKING DATA:</b>	<b>TEL</b> Telephone
FULL SIZE COACHES 20	<b>TOC</b> Top of Concrete
VANS 52	<b>T.O.P.</b> Top of Paving
AUTOMOBILE, DISABLED ACCESS 4	<b>TOS</b> Top of Steel
AUTOMOBILE, EV CHARGING STATION 5 (future)	<b>TOIL</b> Toilet
BICYCLES, UNCOVERED none	<b>TYP</b> Typical
BICYCLES, COVERED none	<b>UNO</b> Unless Noted Otherwise
	<b>VAR</b> Varies
	<b>VER</b> Vertical
	<b>VFI</b> Verrily in Field
	<b>VNC</b> Vinyl Plid Covering
	<b>W/</b> With
	<b>W/ Holder Closet</b>
	<b>W/ Head</b>
	<b>W/ Holder</b>
	<b>W/ Header</b>
	<b>W/ Without</b>
	<b>W/ Height</b>
	<b>W/ Waterproofing</b>
	<b>W/ Waterproofing</b>

NOTE: Abbreviations appearing within these documents which include additional punctuation, shall have the same meaning as those listed above.



**SHEET NOTES**

- A. Parking Data: MCTA is expanding into a consolidated centralized facility to keep up with growing student populations.
- B. West Parking: For 1999 Conditions of Approval. Maximum of 80 vehicles at any one time.
- C. Remove existing chain link fence at new driveway connection. Install new curved sections between existing fence and new gates at each side.

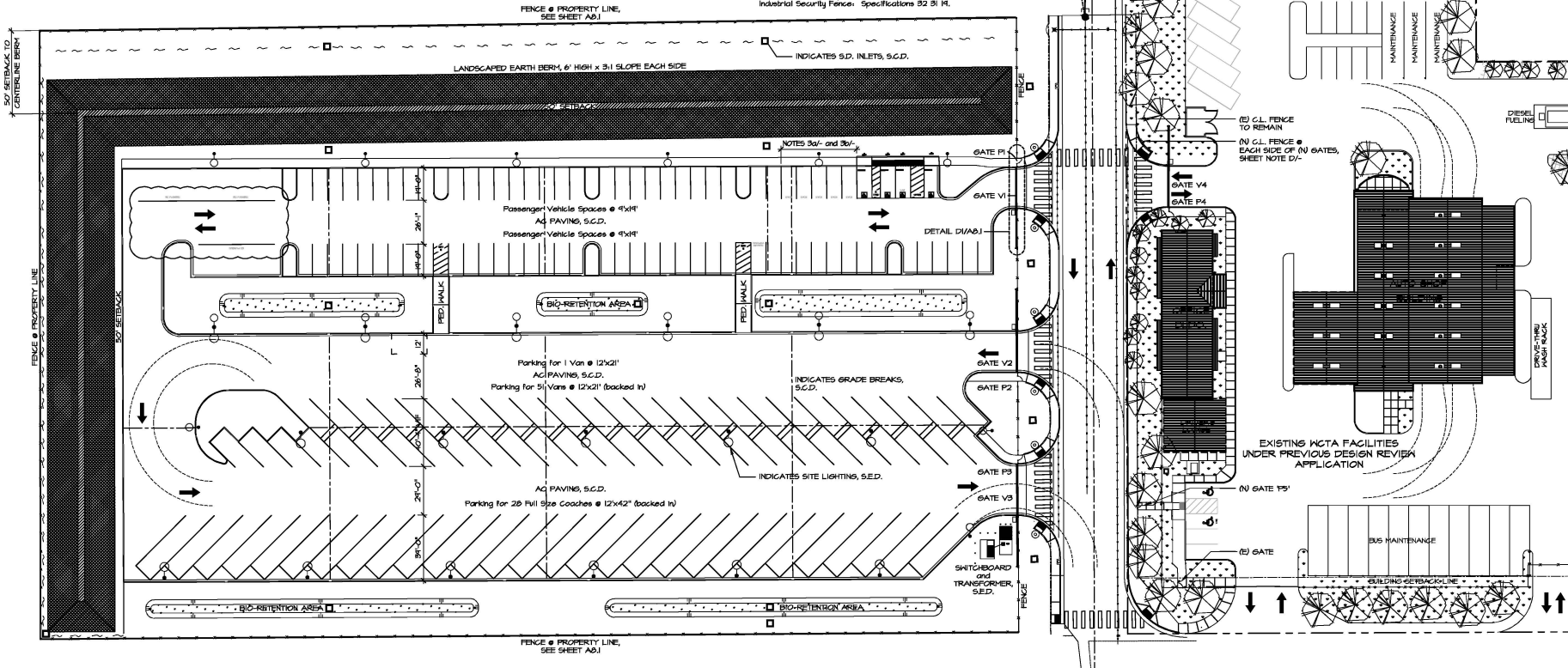
NOTE: WHEN THE AUTOMOBILES ARRIVE, THE BUSES LEAVE, WHEN THE BUSES RETURN, THE AUTOMOBILES LEAVE. THEREFORE, THE MAX. ALLOWED VEHICLE COUNT PER CONDITIONS OF APPROVAL IS NOT EXCEEDED.

**CALGreen NOTES**

- 1. 5106.4.1 Short Term Bicycle Parking: The Project generates no 'Visitor Traffic'. Long Term Bicycle Parking: The Project adds no new tenant-occupants. No Bicycle Parking required.
- 2. 5106.5.2 Designated parking for clean air vehicles: Provide 6 parking spaces for any combination of low-emitting, fuel-efficient and carpool/van pool vehicles. See Civil Drawings for parking stall marking.
- 3a. CALGreen 5106.5.3 Construction shall facilitate future installation of Electric Vehicle Supply Equipment (EVSE). When EVSE is installed it shall be in accordance with the California building code, the California Electrical Code and CALGreen. Multiple charging space raceways are required to be installed, see Electrical Drawings. Total number of provided parking spaces requires (4) EV charging stations. Future charging spaces qualify as designated parking as described in 5106.5.2 Designated parking for clean air vehicles.
- 3b. CBC 11B-812. Electric Vehicle Charging Stations:
  - Operable parts shall comply with 11B-304 clear floor space, height and operation.
  - Floor and ground surfaces shall comply with 11B-302.
  - Accessible route to EV Charger shall comply with 11B-402.
- 4. 5106.6 Light Pollution Reduction (outdoor lighting systems): See Electrical Drawings.
- 5. 5106.10 Grading and Paving: See Civil Drawings.

**GATE SCHEDULE**

- GATE P1' 3'-0" x 7'-0" Steel Swing Pedestrian Gate, manual operation Panic Exit Device out, Access Control in, closer, Perforated steel mesh @ Door and Side Panels
- GATE V1' 24'-0" x 7'-0" Steel Rolling Vehicular Gate, Electric Operator Access Control in, Loop out
- GATE P2' 3'-0" x 7'-0" Steel Swing Pedestrian Gate, manual operation Panic Exit Device out, Access Control in, closer, Perforated steel mesh @ Door and Side Panels
- GATE V2' 24'-0" x 7'-0" Steel Rolling Vehicular Gate, Electric Operator Access Control in, Loop out
- GATE P3' 3'-0" x 7'-0" Steel Swing Pedestrian Gate, manual operation Panic Exit Device out, Access Control in, closer, Perforated steel mesh @ Door and Side Panels
- GATE V3' 30'-0" x 7'-0" Steel Rolling Vehicular Gate, Electric Operator Access Control in, Loop out
- GATE P4' 3'-0" x 6'-0" Steel Swing Pedestrian Gate, manual operation Panic Exit Device out, Access Control in, closer, Perforated steel mesh @ Door and Side Panels
- GATE V4' 24'-0" x 6'-0" Steel Rolling Vehicular Gate, Electric Operator Access Control in, Loop out
- GATE P5' 3'-0" x 6'-0" Chain Link Swing Gate, manual operation, locking See sheet A01 for fencing layout and details. Chain Link Fence: Specifications 32 B1 B. Industrial Security Fence: Specifications 32 B1 H.



200 E. STREET  
Suite 100  
Santa Rosa Co 95404  
Tel: (707) 544-3900  
Fax: (707) 544-2514

© Copyright 2020



*West County Transportation*  
3300 JUNIPER AVENUE, SANTA ROSA, CA

SITE PLAN - West Parking

Job No: G1605  
Drawn By: JB / DZ  
Checked By: DZ  
Cad File: A12  
Date: 24 July 20

Revisions

Sheet Number

A12

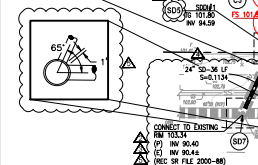
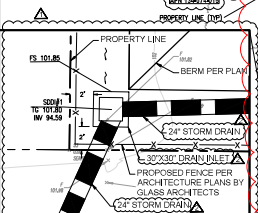
35 of 43

1 SITE PLAN  
1" = 30'-0"

**NOTES**

1. CONTRACTOR SHALL FOLLOW GEOTECHNICAL RECOMMENDATIONS REGARDING CLEARING AND GRUBBING. SOILS CONTAINING ORGANIC MATERIALS SHALL BE LIMITED FOR USE WITHIN THE BERM AND LANDSCAPED AREAS.

NOTE: NO CURBING SHALL TAKE PLACE WITHIN 7 FEET OF THE NORTH, WEST, OR SOUTH PROPERTY LINE.



**CONSTRUCTION NOTES**

- (C1) INSTALL TYPE I CURB AND GUTTER
- (C2) INSTALL VERTICAL CURB PER
- (C3) INSTALL BERM
- (C4) INSTALL CONCRETE PAVING
- (C5) INSTALL WHEEL STOP
- (C6) INSTALL 18" CURB TAPER
- (C7) INSTALL 24" CURB OPENING
- (C8) INSTALL SIDEWALK
- (C9) INSTALL FENCE PER ARCHITECTURE PLANS BY GLASS ARCHITECTS PER BLD20-4967
- (C10) INSTALL PEDESTRIAN GATE PER ARCHITECTURE PLANS BY GLASS ARCHITECTS PER BLD20-4967
- (C11) INSTALL ELECTRIC SAFETY GATE PER ARCHITECTURE PLANS BY GLASS ARCHITECTS PER BLD20-4967
- (C12) CONTRACTOR SHALL COORDINATE WITH OWNER INSTALLATION SECURITY FENCE AND REMOVAL OF ANNEX FENCE PER BLD20-4967
- (C13) LIMITS OF DISTURBANCE
- (C14) INSTALL ACCESS RAMP PER
- (C15) INSTALL EARTH SWALE PER
- (S01) TYPICAL BIORETENTION FACILITY
- (S02) INSTALL HOPE STORM DRAIN (SIZE PER PLANS)
- (S03) INSTALL 18" X 30" DRAINAGE INLET
- (S04) INSTALL 24" X 30" DRAINAGE INLET
- (S05) INSTALL STORM DRAIN MANHOLE
- (S06) STORM DRAIN CLEANOUT
- (S07) CUT STORM DRAIN PIPE INTO (E) MANHOLE AND SEAL VOIDS WITH 1:3 MORTAR.

**LEGEND**

- AUTO PARKING TYPICAL STRUCTURAL SECTION - 4" ASPHALT TO CONCRETE ON 1/2" CLASS 2 AGGREGATE BASE @ 90% RELATIVE COMPACTION, SCARIFY & SUBGRADE AND RECOMPACT TO 90% RELATIVE COMPACTION.
- BUS DRIVE ABLE TYPICAL SECTION - 4" ASPHALT TO CONCRETE ON 1/2" CLASS 2 AGGREGATE BASE @ 90% RELATIVE COMPACTION, SCARIFY & SUBGRADE AND RECOMPACT TO 90% RELATIVE COMPACTION.
- AUTO DRIVE ABLE AND BUS PARKING TYPICAL STRUCTURAL SECTION - 3/4" ASPHALT TO CONCRETE ON 1/2" CLASS 2 AGGREGATE BASE @ 90% RELATIVE COMPACTION, SCARIFY & SUBGRADE AND RECOMPACT TO 90% RELATIVE COMPACTION.
- CONSTRUCT CONCRETE SIDEWALK PER
- BIORETENTION AREA
- REFER TO CONSTRUCTION NOTE
- BIORETENTION AREA
- PROPERTY LINE
- ANNEX FENCE

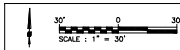
**BIORETENTION**

BIORET	L(FT)	W(FT)	A(SF)
A	210	8	1,600
B	136.5	14	1,910
C	119	10	1,190
D	108	14	1,512
E	5.7	5.4	3,060
F			1,499

**DANGER:** EXACT LOCATION OF GAS, ELECTRIC AND FIBER OPTIC SERVICES IS NOT KNOWN. CONTRACTOR SHALL USE CAUTION AND VERIFY EXACT LOCATION PRIOR TO COMMENCING DEMOLITION OF UTILITIES AND TRENCHING.

WORK IN THE PUBLIC RIGHT-OF-WAY IS SHOWN FOR REFERENCE ONLY AND SHALL BE CONSTRUCTED UNDER A SEPARATE CONTRACT AGREEMENT.

**WEST ROBLES AVENUE**



895 SONOMA AVENUE  
SANTA ROSA, CA 95404  
TEL: (707) 544-0764

OCTOBER 27, 2021

**GRADING AND DRAINAGE IMPROVEMENTS**  
ON-SITE CIVIL GRADING PLANS  
WEST COUNTY TRANSPORTATION PARKING LOT AND JUNIPER ROAD  
WEST ROBLES AVENUE AND JUNIPER AVENUE  
SANTA ROSA, CALIFORNIA

Submital / Revision:

01/27/2021	Final Check
02/16/2021	Final Check
03/02/2021	Final Check
04/07/2021	Final Check
06/29/2021	Final Check
10/27/2021	Final Check
06/09/2022	BIORET SDOCS
11/02/22	Design Review
11/02/22	Berm Revision

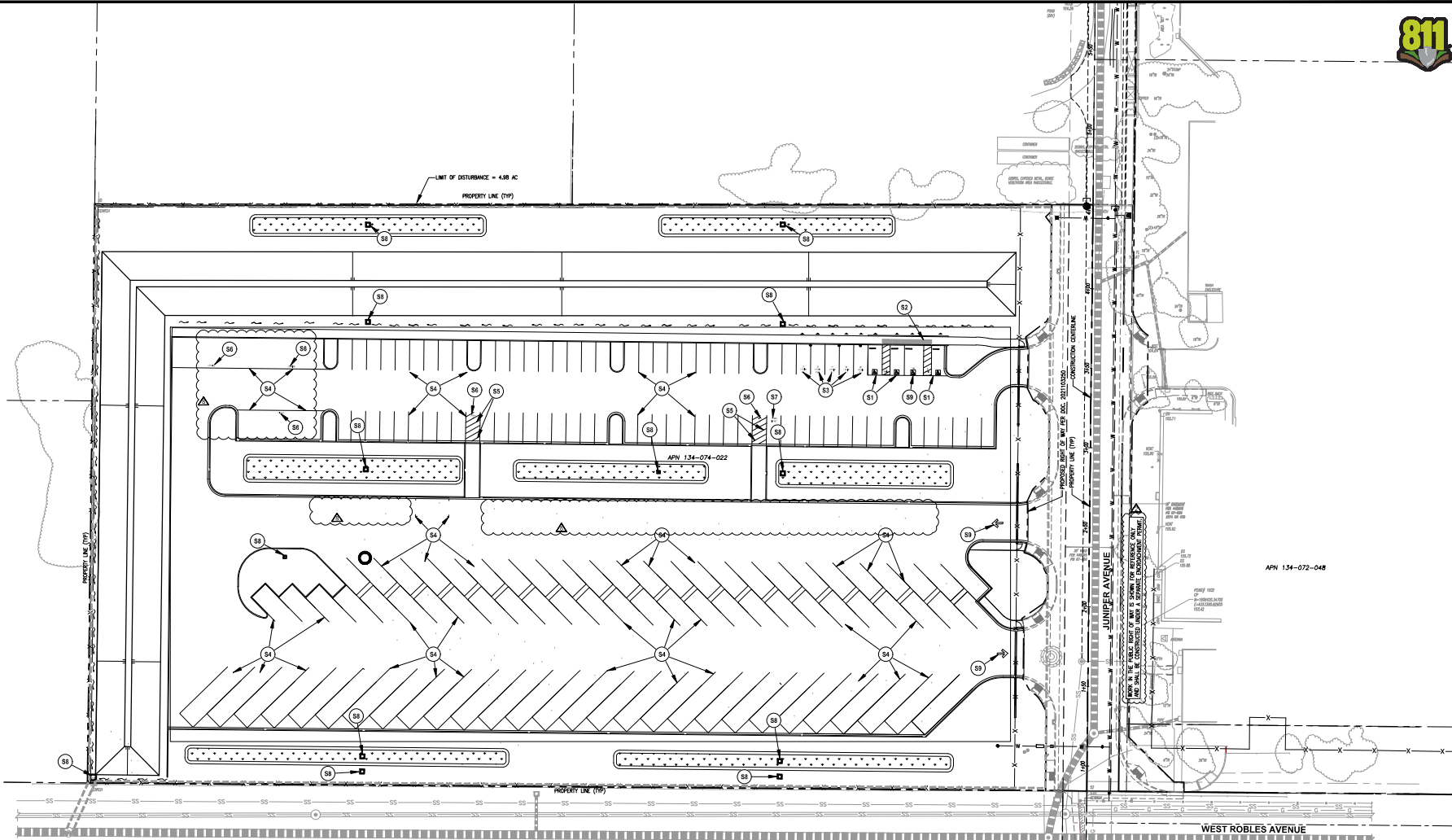
Job No: 20-2850A  
Drawn By: KH  
Checked By: MJ  
Date: OCTOBER 27, 2021

Sheet Number  
**C4.0**





**SIGNING AND STRIPING PLANS**  
ONSITE CIVIL GRADING PLANS  
WEST COUNTY TRANSPORTATION PARKING LOT AND JUNIPER ROAD  
WEST ROBLES AVENUE AND JUNIPER AVENUE  
SANTA ROSA, CALIFORNIA



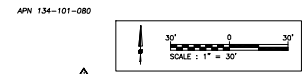
**SIGNING AND STRIPING NOTES**

- |  |  |            |
|--|--|------------|
| (S1) ACCESSIBLE PARKING STALL PER (F) (C6.0)                                     | (S7) WHITE PAINT "CLEAN AIR VANPOOL"             | (A) (C6.7) |
| (S2) TRUNCATED DOMES PER (C) (C6.3)  | (S8) "NO DUMPING, DRAINS TO RIVER" STICKER       |            |
| (S3) WHITE PAINT "EVCP" (ELECTRIC VEHICLE CHARGING PARKING STALL) PER (D) (C6.0) | (S9) PAINT WHITE ARROW PER CALTRANS TYPE 1 ARROW |            |
| (S4) 4" WHITE STRIPE   | (S0) VAN ACCESSIBLE PARKING STALL PER (E) (C6.0) |            |
| (S5) 4" DIAGONAL WHITE STRIPE  |  |            |
| (S6) WHITE PAINT "NO PARKING"  |  |            |

**LEGEND**

- (X) REFER TO CONSTRUCTION NOTE

**DANGER:**  
EXACT LOCATION OF GAS, ELECTRIC AND FIBER OPTIC SERVICES IS NOT KNOWN. CONTRACTOR SHALL USE CAUTION AND VERIFY EXACT LOCATION PRIOR TO COMMENCING DEMOLITION OF UTILITIES AND TRENCHING.

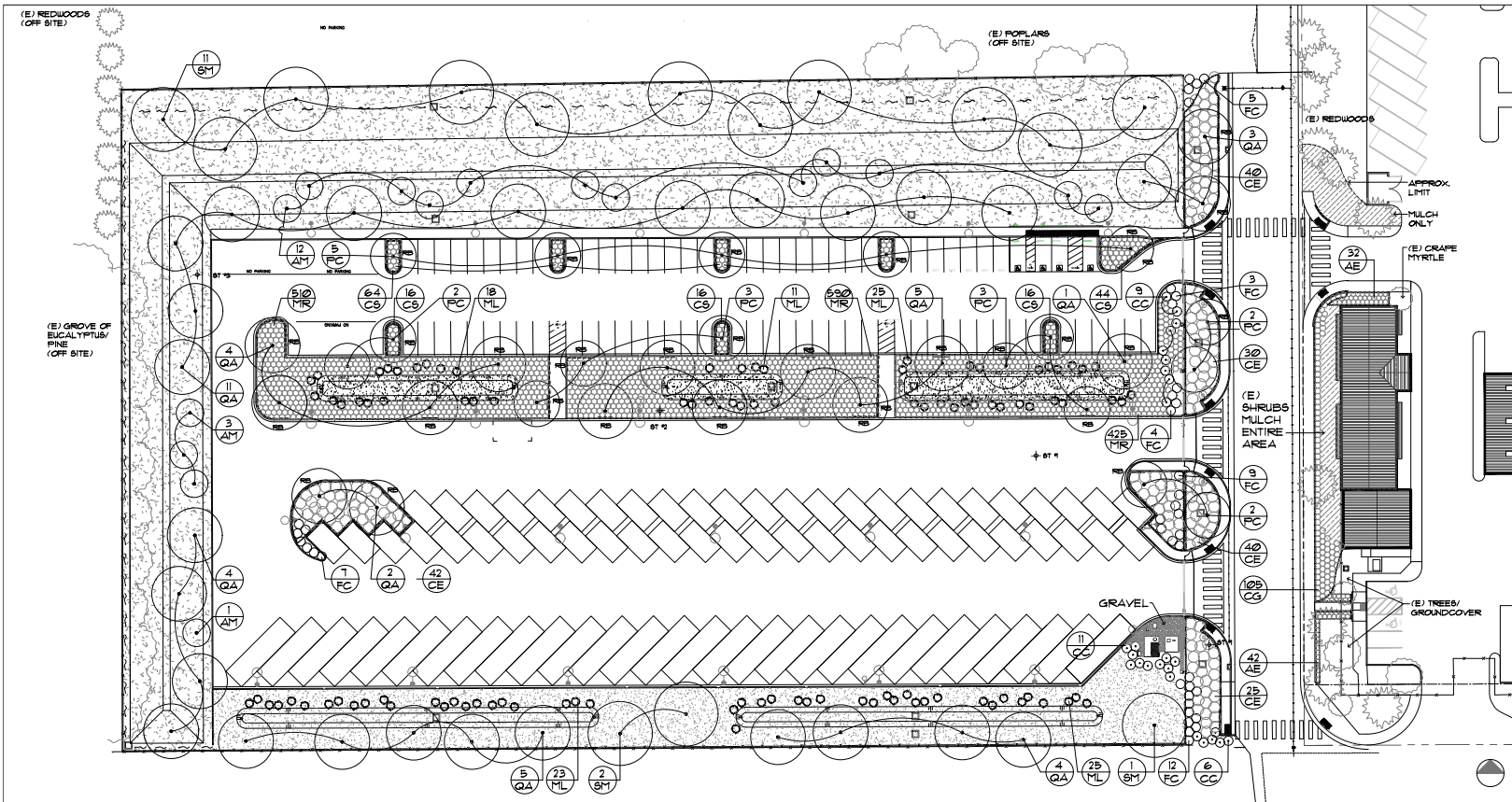


Submittal / Revision

▲	01/27/2021	Plancheck
▲	02/16/2021	Plancheck
▲	03/23/2021	Plancheck
▲	04/07/2021	Plancheck
▲	06/29/2021	Plancheck
▲	10/27/2021	Plancheck
▲	06/09/2022	BID/RET SDCD
▲	7/7/2022	Design Review
▲	11/22/22	Berm Revisions

Job No: 20-2850A  
Drawn By: KH  
Checked By: MM  
Date: OCTOBER 27, 2021

Sheet Number  
**C5.0**  
6 of 89



# 1 PLANTING PLAN

1" = 30'-0"

Key	Botanical Name	Common Name	Size	WUCOLS Rating
<b>TREES:</b>				
AM	Arbutus 'Marina'	Arbutus	15 gal, multi	L
PC	Platycodon chinensis 'Keith Davies'	Chinese Platycodon	15 gal.	L
QA	Quercus agrifolia	Coast Live Oak	15 gal./low-branched	VL
SM	Schinus molle	California Pepper	15 gal./multi	VL
<b>SHRUBS &amp; PERENNIAL GRASSES:</b>				
CC	Ceanothus 'Concha'	California lilac	5 gallon	L
FC	Frangula californica 'Eve Case'	Coffeetery	5 gallon	L
ML	Muhlenbergia lindheimeri	Mundy grass	5 gallon	L
<b>GROUNDCOVERS:</b>				
AE	Aucubus japonica 'Garnier Dur'	Little Star magnolia	1 gal, 30" o.c.	M
CE	Ceanothus 'Centennial'	Centennial Ceanothus	1 gal, 72" o.c.	L
CG	Ceanothus gloriosus 'Hearts Desire'	Point Reyes Ceanothus	1 gal, 36" o.c.	L
CS	Cistus salviifolius 'Prostratus'	Sage leaf rockrose	1 gal, 36" o.c.	L
MR	Muhlenbergia rigens	Deer grass	4" pot, 36" o.c.	L

SEED MIXES: Supplier: Le Ballister's Seed Santa Rosa, CA 707/526-6733

Perimeter berm: Little Three Native Perennial Blend: (Molate, Taraxacum, Fescue/Muhlenbergia Fescue)	3 lbs./1000 SF	L
California Poppy	3 oz./1000 SF	L
South parking perimeter/bioswale: Creeping Red Fescue (Festuca rubra)	5 lbs./1000 SF	L
Center parking bioswale: Purple Needlegrass (Nassella pulchra)	2 lbs./1000 SF	L

**PLANTING NOTES:**

- Soils: Soils fertility test locations are indicated on the plan by symbol - 3 total. See specifications for requirements. Test results to be forwarded as a submittal 2 weeks prior to soil preparation operations (minimum) for review and recommendations.
  - A - General on-site soils: Refer to specifications for amendment reqts. for bidding. These specifications will be modified following review of on-site soil fertility test results.
  - B - On-site bio-retention areas: Bioswale media mix, specification and depth per the Civil specifications and drawings. Additional amendment of this soil mix not required.
  - C - Hydroseeded areas (Berm and south perimeter planting area): Soil amendment not required except in tree and potted grass planting pits. Amended backfill shall be as specified in the Soils Report.
- Root barriers: To be placed as diagrammed on the 'Planting Plan. (8' length min., extent greater as shown.) Refer to Specifications for material.
- All planting areas shall receive a 3" layer of wood chip mulch. See specifications for type. Seeded areas are excepted. Refer to Specification Section 32 92 00 - Grasses for requirements in these areas.

**WELCO COMPLIANCE:**  
I have complied with the criteria of the ordinance and applied them for the efficient use of water in the landscape design plan.



**GLASS ARCHITECTS**  
A JKA COMPANY  
200 E STREET  
Suite 100  
Santa Rosa, CA 95404  
Tel: (707) 544-3900  
Fax: (707) 544-2514  
© Copyright 2021

**STEPHANIE McALLISTER**  
Landscape Architect  
500 Keller Street  
Petaluma, CA 94952  
707 778-7693

*West County Transportation*  
3300 JUNIPER AVENUE, SANTA ROSA, CA

PLANTING PLAN

Job No: 01605  
Drawn By: SM  
Checked By: SM  
Cod File:  
Date: 10-27-2021

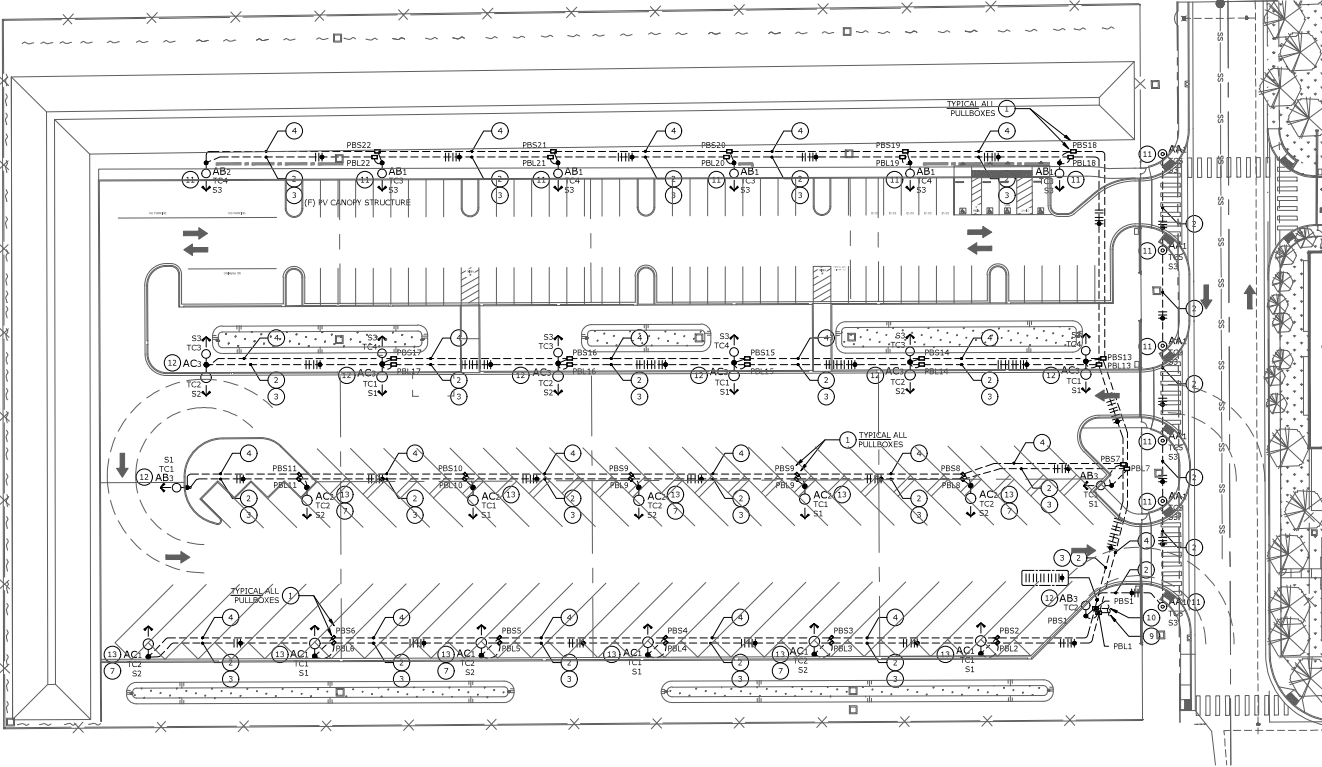
Revisions  
Design Review  
03/02/22

Sheet Number

L2.1

15 of 16





**SITE PLAN - LIGHTING**  
SCALE: 1" = 30' - 0"

**NUMBERED SHEET NOTES**

- 1 PROVIDE FLUSH IN GRADE PULLBOX CHRISTY (OR EQUAL), PULLBOX COVER SHALL BE LABELED AND SIZED AS IDENTIFIED ON PULLBOX SCHEDULE, PER RESPECTIVE ID, WHERE LOCATED IN TRAFFIC (PARKING) AREAS, BOXES SHALL BE TRAFFIC RATED/ REINFORCED CONCRETE WITH STEEL FRAME AND #10 STEEL COVER, WHERE LOCATED ELSEWHERE, BOXES SHALL BE REINFORCED CONCRETE, ALL PULLBOX LOCATION SHALL BE COORDINATED WITH THE ARCHITECT, PRIOR TO ROUGH-IN.
- 2 PROVIDE AND INSTALL (1) 1-1/4" C, FOR LIGHTING BRANCH CIRCUIT WIRING, PROVIDE #8 HOTS AND #10G IN QUANTITIES SHOWN.
- 3 PROVIDE AND INSTALL (1) 1-1/4" C, FOR 120V GENERAL PURPOSE RECEPTACLES, CONDUIT SHALL RISE UP WITHIN POLE, FOR POLE MOUNTED RECEPTACLE, COORDINATE PRIOR TO ROUGH-IN.
- 4 PROVIDE AND INSTALL (1) 1-1/4" C, FOR P.O.E, SECURITY CAMERA, SECURITY CAMERA AND WIRING BY OTHERS, CONDUIT SHALL RISE UP ADJACENT CONCRETE POLE BASE OR POLE RESPECTIVELY, COORDINATE PRIOR TO ROUGH-IN.
- 5 NOT USED
- 6 LOCATE PULLBOXES ON CONCRETE PAD IN BIO-RETENTION AREA, DIAGRAMMATIC LOCATION SHOWN.
- 7 PROVIDE AND INSTALL 120V GFI-RECEPTACLE LOCATED IN LOCKABLE, "IN-USE" TYPE, WEATHERPROOF ENCLOSURE, INSTALLED TO LIGHTING POLE.
- 8 ALL CONDUITS SHALL RISE UP WITHIN POLE, VIA CONCRETE BASE, CO-LOCATE LIGHTING AND RECEPTACLE BRANCH CIRCUITING WIRING IN COMMON 1" C FROM ADJACENT PULLBOX, EXTEND 3/4" C, FROM SIGNAL BOX FOR SECURITY CAMERA WIRING BY OTHERS.
- 9 EXTEND LIGHTING BRANCH CIRCUIT AND CONTROL WIRING TO "MSB" DISTRIBUTION SECTION, ROUTED VIA RESPECTIVE TIME CLOCK CHANNELS.
- 10 EXTEND SECURITY CONDUIT ROUGH-IN TO "MSB" PAD, AND STUB OUT ADJACENT DISTRIBUTION SECTION.
- 11 SEE DETAIL 1/E1.2 FOR POLE BASE CONFIGURATION.
- 12 SEE DETAIL 2/E1.2 FOR POLE BASE CONFIGURATION.
- 13 SEE DETAIL 3/E1.2 FOR POLE BASE CONFIGURATION.

**PULLBOX SCHEDULE**

ID	LABEL	SIZE	TRAFFIC RATED (Y/N)
PBL1	LIGHTING	N30	N
PBS1	SIGNAL	N16	N
PBL2	LIGHTING	N16	Y
PBS2	SIGNAL	N16	Y
PBL3	LIGHTING	N16	Y
PBS3	SIGNAL	N16	Y
PBL4	LIGHTING	N16	Y
PBS4	SIGNAL	N16	Y
PBL5	LIGHTING	N16	Y
PBS5	SIGNAL	N16	Y
PBL6	LIGHTING	N16	Y
PBS6	SIGNAL	N16	Y
PBL7	LIGHTING	N30	N
PBS7	SIGNAL	N30	N
PBL8	LIGHTING	N16	Y
PBS8	SIGNAL	N16	Y
PBL9	LIGHTING	N16	Y
PBS9	SIGNAL	N16	Y
PBL10	LIGHTING	N16	Y
PBS10	SIGNAL	N16	Y
PBL11	LIGHTING	N16	Y
PBS11	SIGNAL	N16	Y
PBL12	LIGHTING	N16	Y
PBS12	SIGNAL	N16	Y
PBL13	LIGHTING	N16	N
PBS13	SIGNAL	N16	N
PBL14	LIGHTING	N16	N
PBS14	SIGNAL	N16	N
PBL15	LIGHTING	N16	N
PBS15	SIGNAL	N16	N
PBL16	LIGHTING	N16	N
PBS16	SIGNAL	N16	N
PBL17	LIGHTING	N16	N
PBS17	SIGNAL	N16	N
PBL18	LIGHTING	N16	N
PBS18	SIGNAL	N16	N
PBL19	LIGHTING	N16	N
PBS19	SIGNAL	N16	N
PBL20	LIGHTING	N16	N
PBS20	SIGNAL	N16	N
PBL21	LIGHTING	N16	N
PBS21	SIGNAL	N16	N
PBL22	LIGHTING	N16	N
PBS22	SIGNAL	N16	N

NOTE: REFER TO NUMBERED NOTE 1 FOR ALL PULLBOXES IDENTIFIED ON SCHEDULE.



200 E STREET  
Suite 100  
Santa Rosa Ca 95404  
Tel: (707) 544-3920  
Fax: (707) 544-2514  
© Copyright 2020



*West County Transportation*  
367 WEST ROBLES AVENUE, SANTA ROSA, CA



**SITE PLAN - LIGHTING**

Job No: 01605  
Drawn By: JK  
Checked By: PJC  
Cod File:  
Date: 3-2-2021

Revisions  
DESIGN REVIEW  
6/30/2022

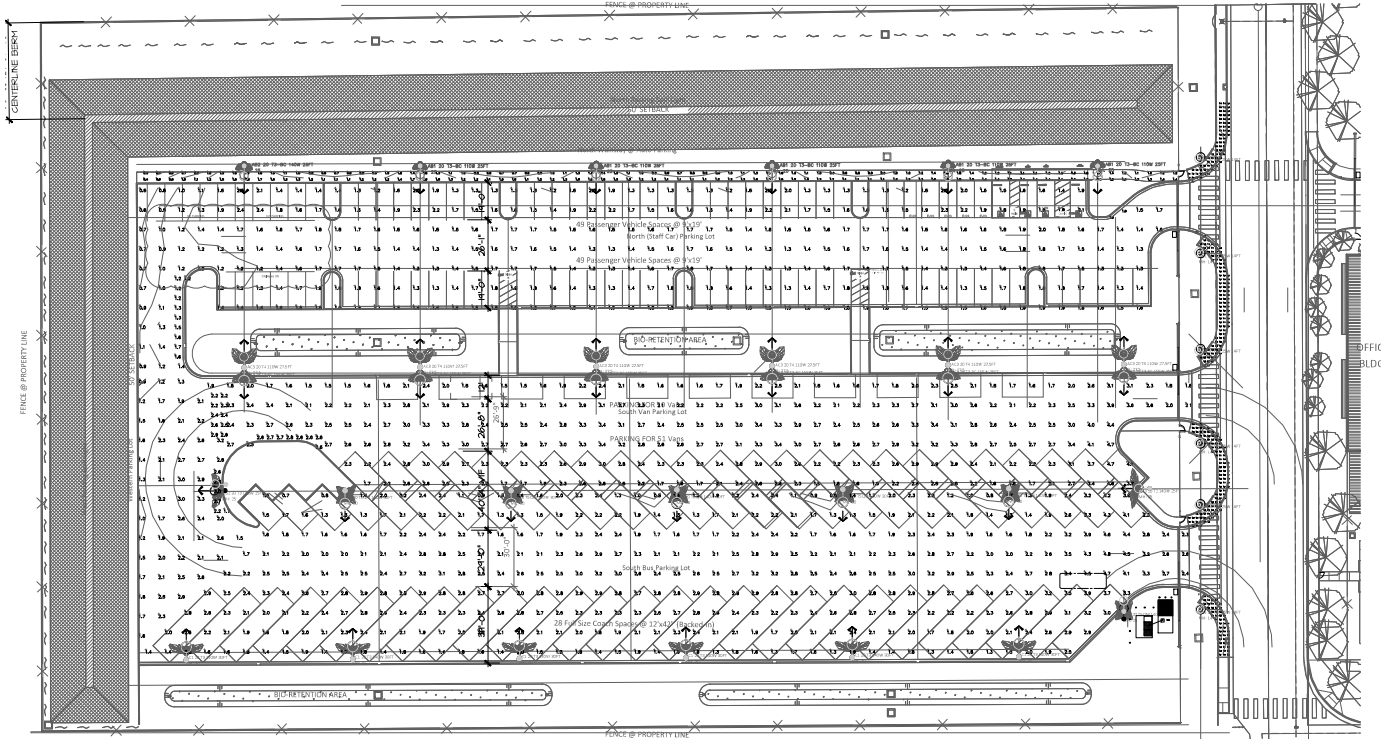
Sheet Number

E1.2

X of TOTAL



Calculation Summary							
Label	CalcType	Units	Avg	Max	Min	Avg/Min	Max/Min
CP_North (Staff Car) Parking Lot	Illuminance	Fc	1.55	2.5	0.5	3.10	5.00
CP_Curved Walkways east roadway	Illuminance	Fc	1.57	2.5	0.4	3.93	5.75
CP_North Walkway @ Auto Par	Illuminance	Fc	1.22	2.0	0.3	4.07	6.67
CP_South Bus Parking Lot	Illuminance	Fc	2.25	4.8	0.7	3.21	6.86
CP_South Van Parking Lot	Illuminance	Fc	2.50	4.7	1.5	1.67	3.13
CP_South Van Parking Lot-1	Illuminance	Fc	2.65	2.8	2.6	1.02	1.08
CP_Western Parking Lot	Illuminance	Fc	2.06	3.3	0.9	2.29	3.67
CP_Western Parking Lot-1	Illuminance	Fc	2.50	3.0	1.7	1.47	1.76
CP_Western Parking Lot-2	Illuminance	Fc	2.46	2.9	2.2	1.12	1.32
CP_Western Parking Lot-3	Illuminance	Fc	1.38	1.7	1.2	1.15	1.42



**SITE PLAN - PROJECTED ILLUMINANCE LEVELS IN FOOTCANDLES**

SCALE: 1" = 30' - 0"

1  
E9.1



200 E STREET  
Suite 100  
Santa Rosa Ca 95404  
Tel: (707) 544-3920  
Fax: (707) 544-2514

© Copyright 2020



*West County Transportation*  
367 WEST ROBLES AVENUE, SANTA ROSA, CA



**SITE PLAN  
LIGHTING STUDY**

Job No: 01605  
Drawn By: JK  
Checked By: PJC  
Cad File:  
Date: 3-2-2021

Revisions  
DESIGN REVIEW  
6/30/2022

Sheet Number

E9.1

X of TOTAL