



Type



Plans

PLP98-0050

Permit Number

367

Street Number

W ROBLES AVE

Street Name

BEL

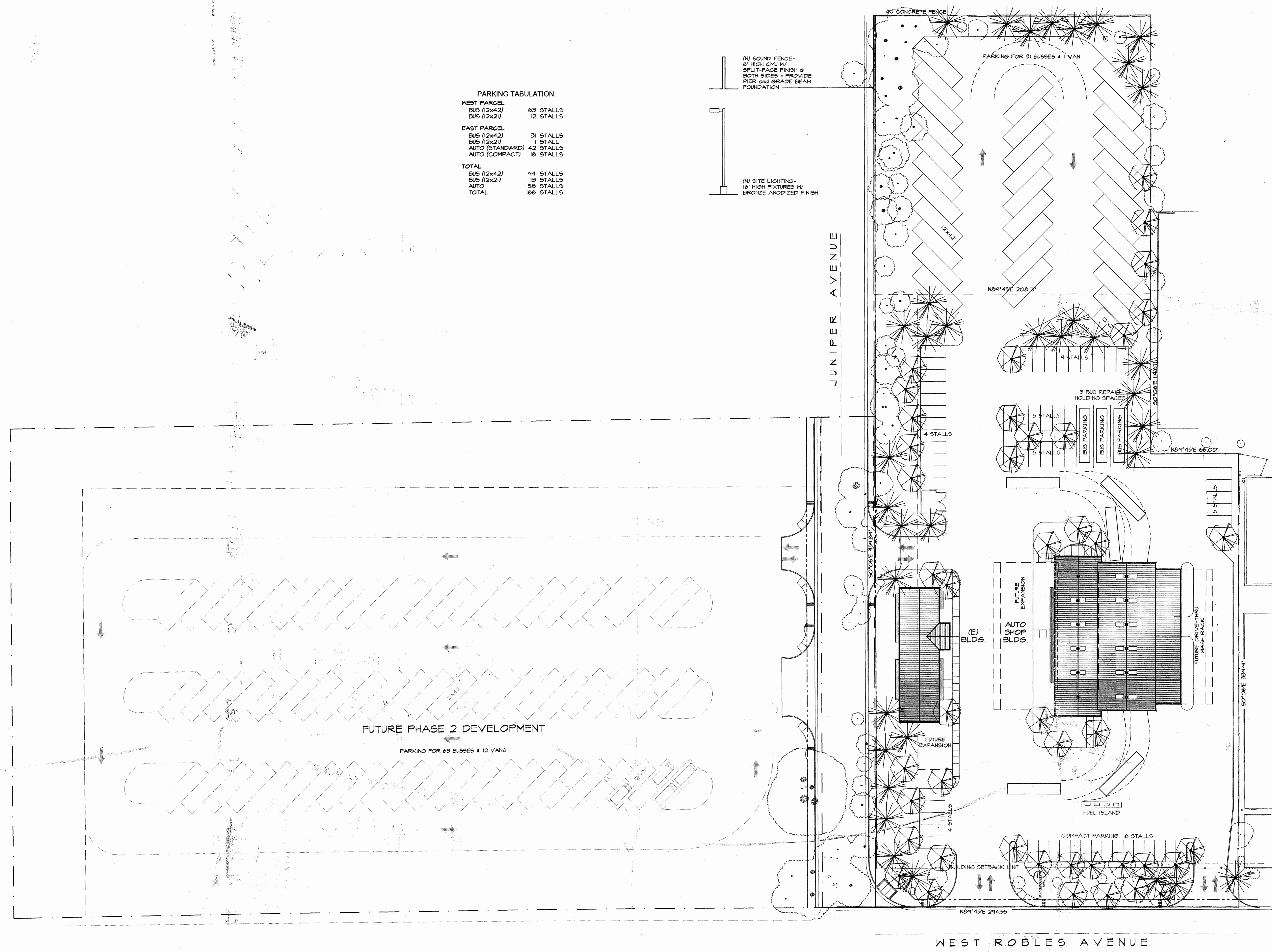
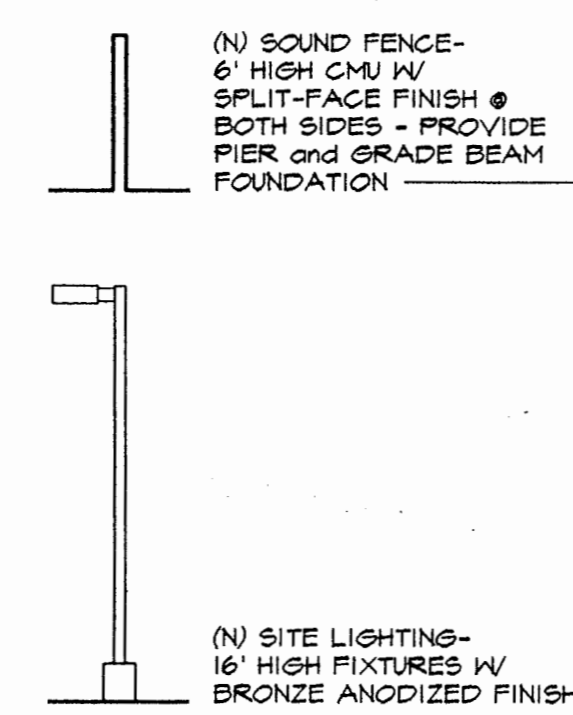
Community Code

134-074-022

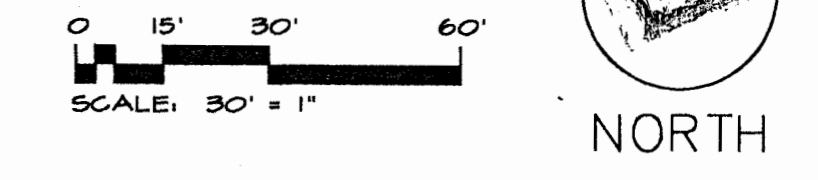
APN

PARKING TABULATION

WEST PARCEL	
BUS (12x42)	63 STALLS
BUS (12x21)	12 STALLS
EAST PARCEL	
BUS (12x42)	31 STALLS
BUS (12x21)	1 STALL
AUTO (STANDARD)	42 STALLS
AUTO (COMPACT)	16 STALLS
TOTAL	
BUS (12x42)	94 STALLS
BUS (12x21)	13 STALLS
AUTO	58 STALLS
TOTAL	166 STALLS

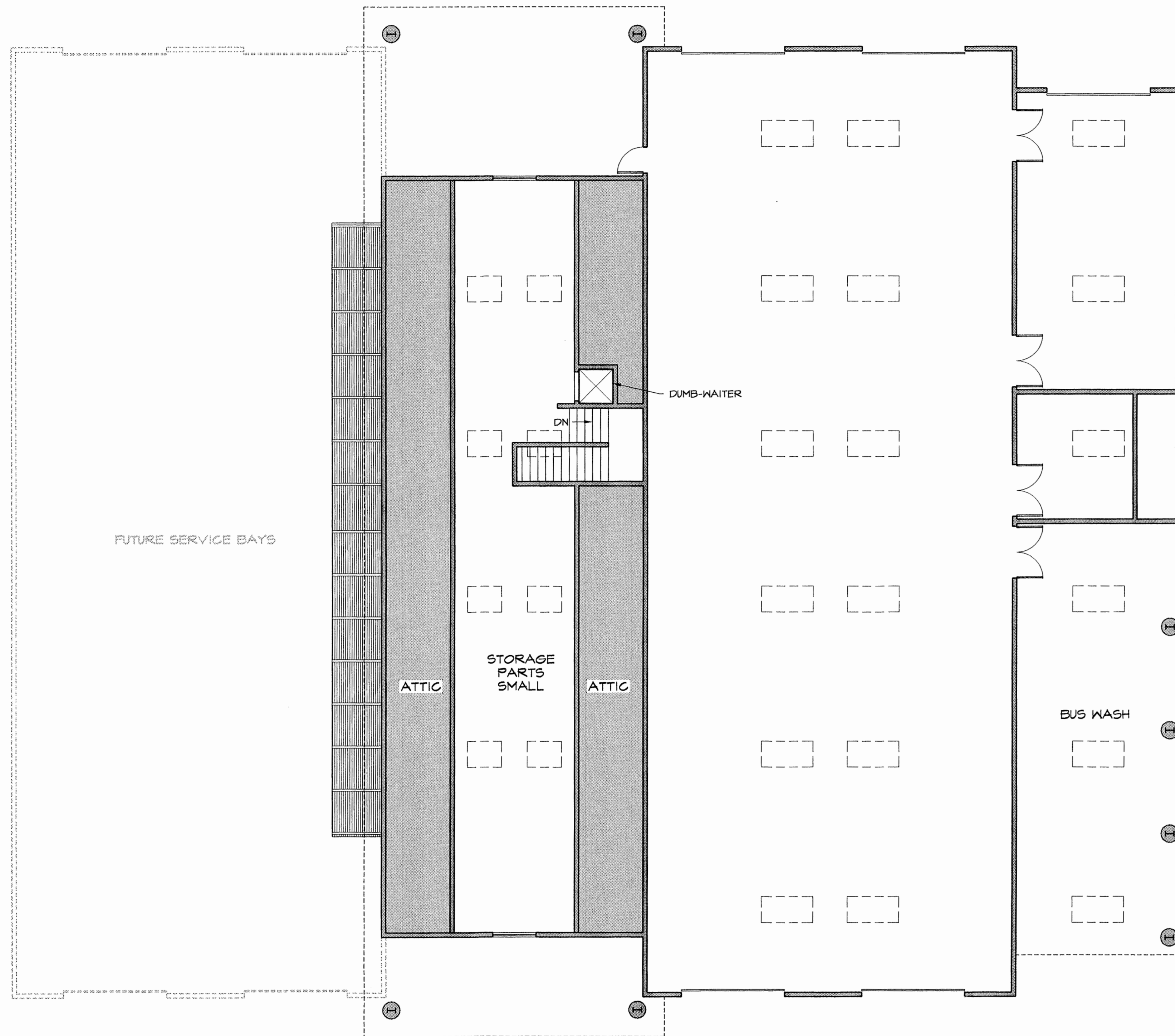


DESIGN REVIEW COMMITTEE
 PREPARED BY: [Signature]
 APPROVED BY: [Signature]
 AS SUBMITTED
 AS MODIFIED AS INDICATED
 NEEDS MODIFICATIONS AS INDICATED
 BY: [Signature]

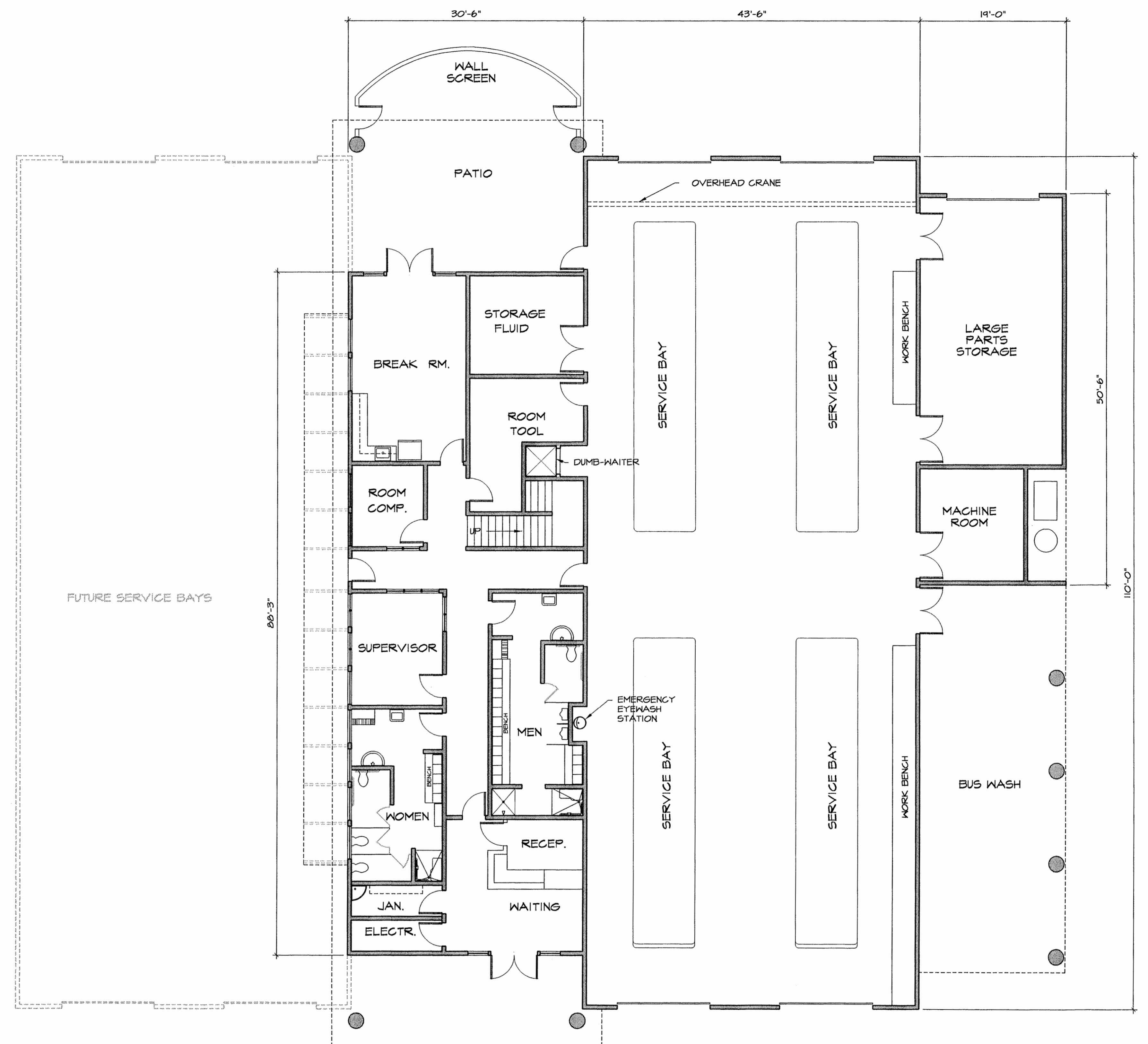


PHASE 1 SITE PLAN

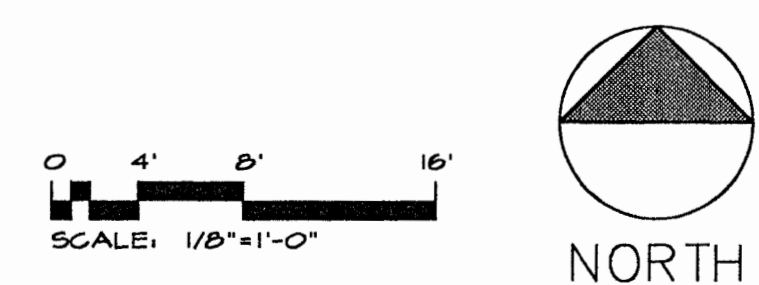
WEST COUNTY TRANSPORTATION
 JULY 19, 2000

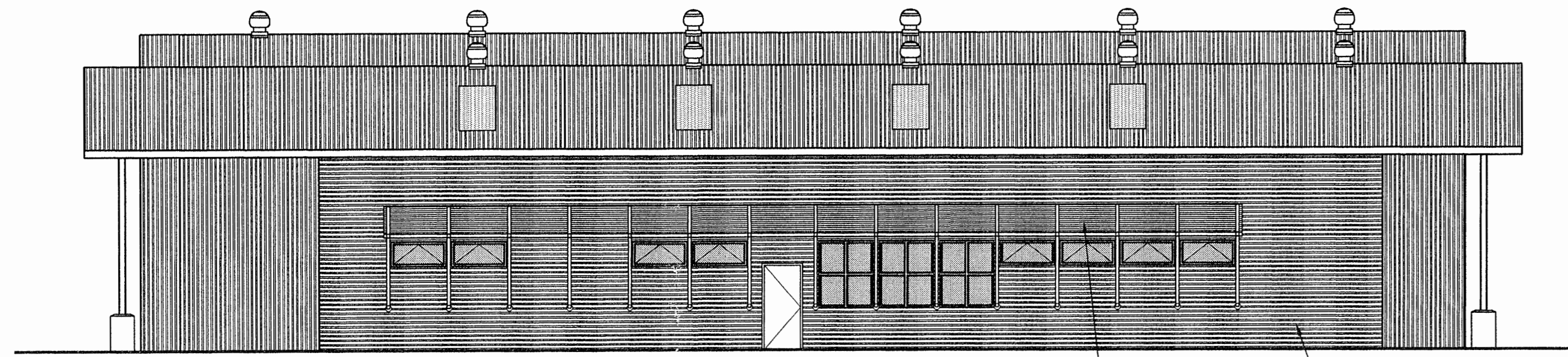


UPPER LEVEL FLOOR PLAN



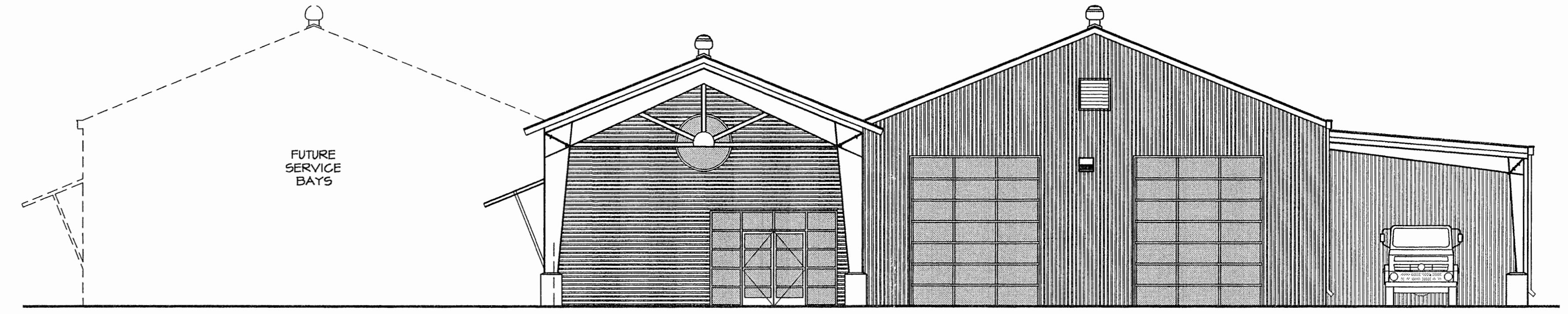
LOWER LEVEL FLOOR PLAN





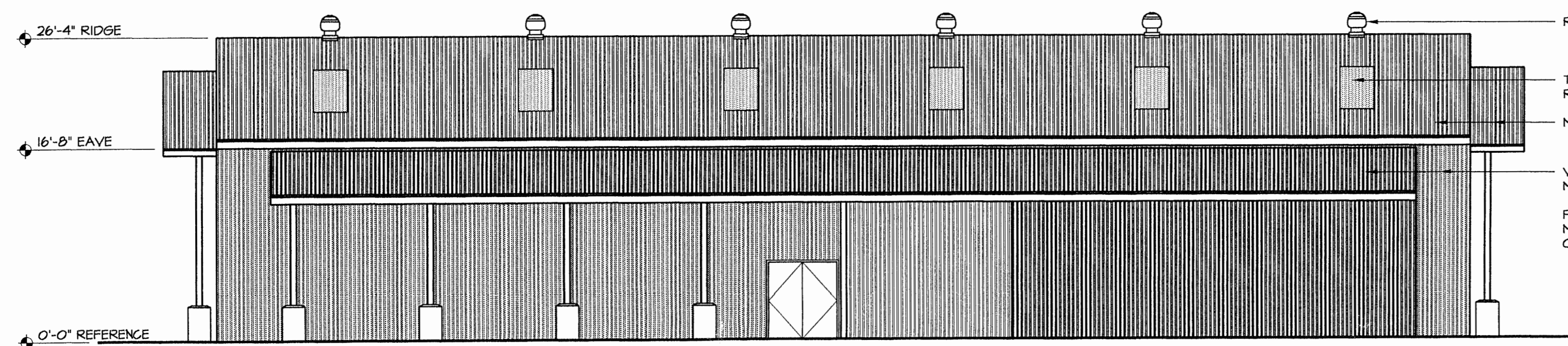
WEST ELEVATION

METAL AWNINGS OVER WINDOWS
HORIZONTAL METAL SIDING



SOUTH ELEVATION

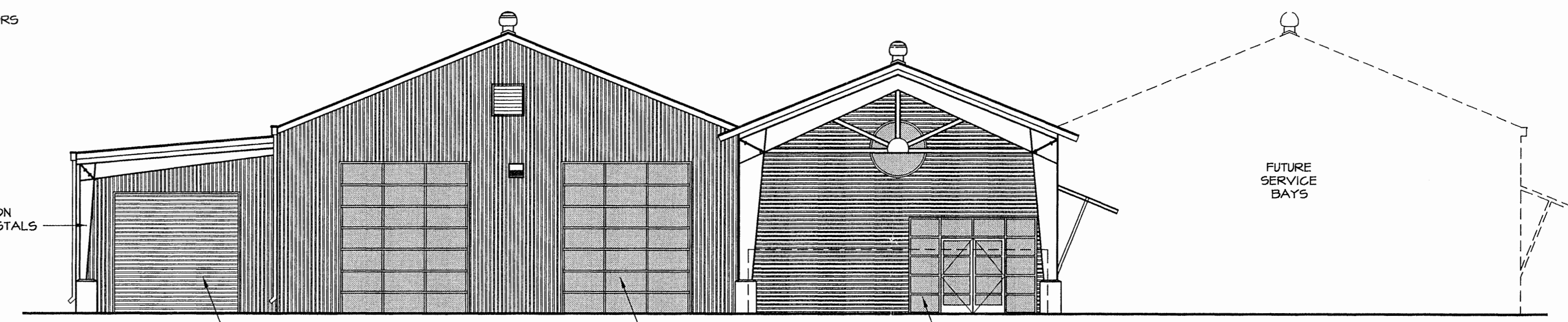
FUTURE SERVICE BAYS



EAST ELEVATION

ROOF VENTILATORS
TRANSPARENT ROOF PANELS
METAL ROOFING
VERTICAL METAL SIDING
PAINTED METAL FRAMES ON CONCRETE PEDESTALS

26'-4" RIDGE
16'-0" EAVE
0'-0" REFERENCE

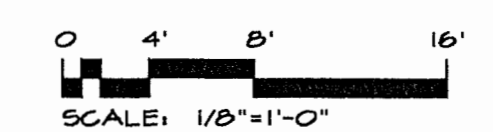


NORTH ELEVATION

METAL O'HEAD DOORS
GLASS O'HEAD DOORS
ALUMINUM STOREFRONT SYSTEM
FUTURE SERVICE BAYS

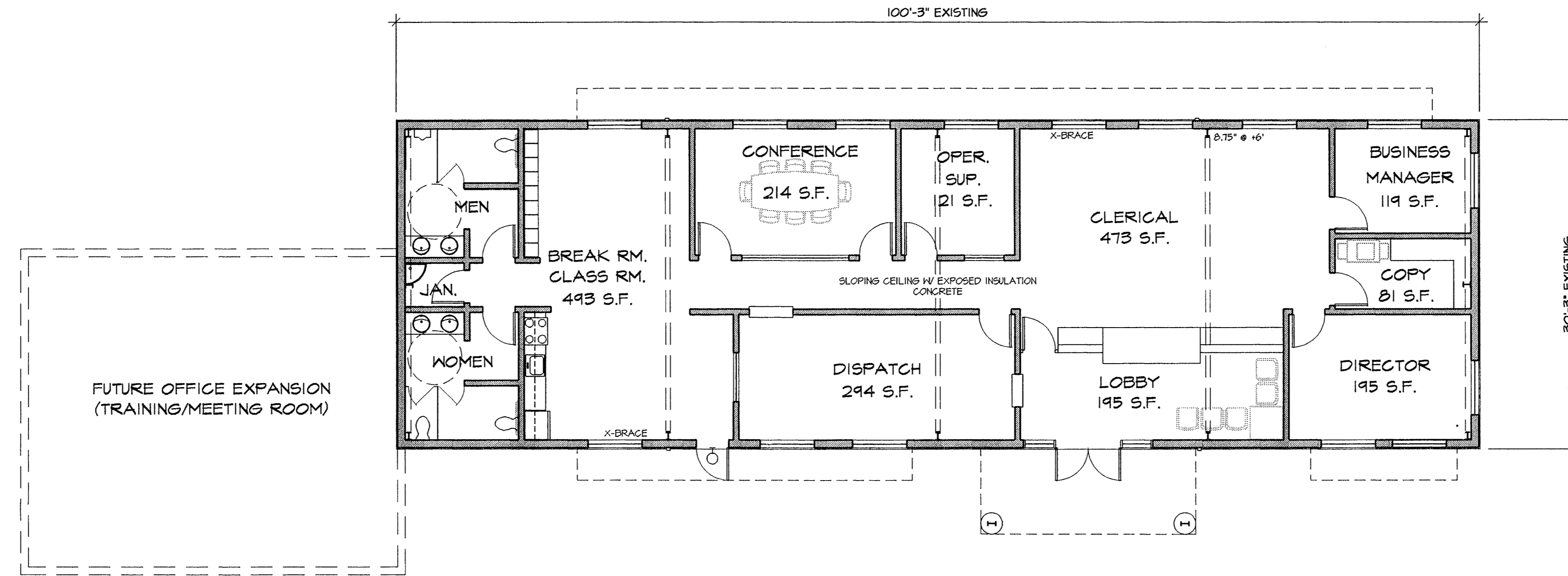


ELEVATIONS

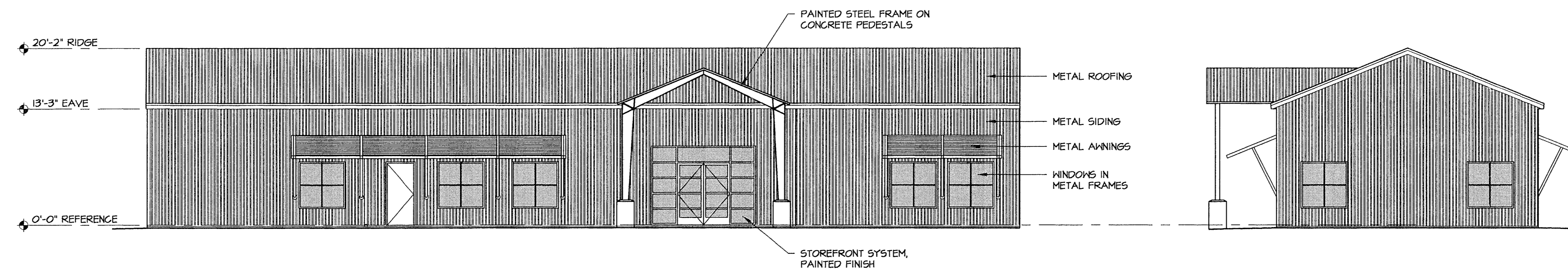


WEST COUNTY TRANSPORTATION

APRIL 19, 2000

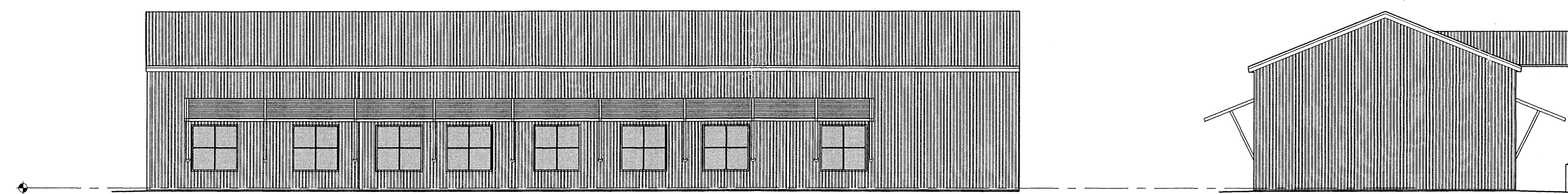


FLOOR PLAN



EAST ELEVATION

NORTH ELEVATION

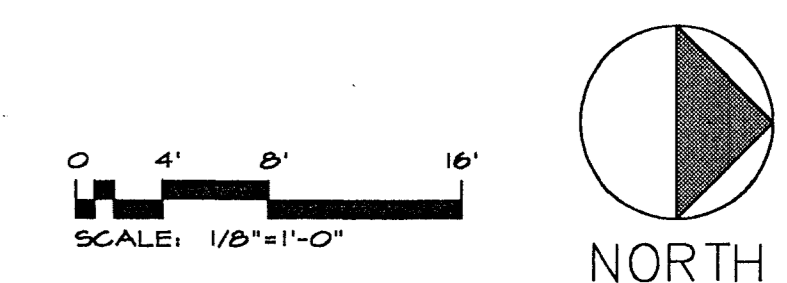


WEST ELEVATION

SOUTH ELEVATION

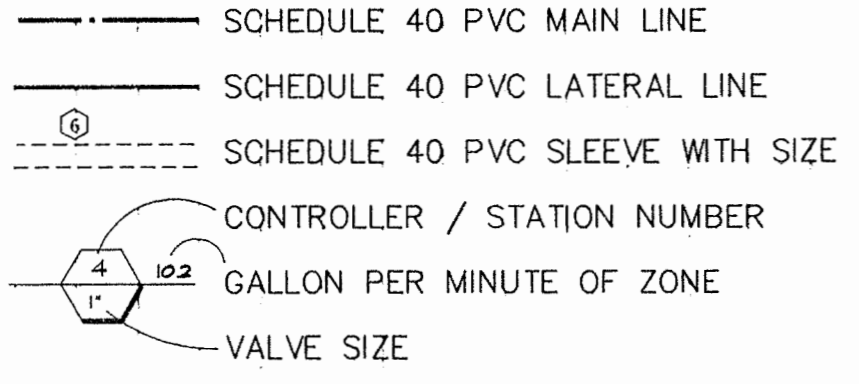


ADMINISTRATION BUILDING

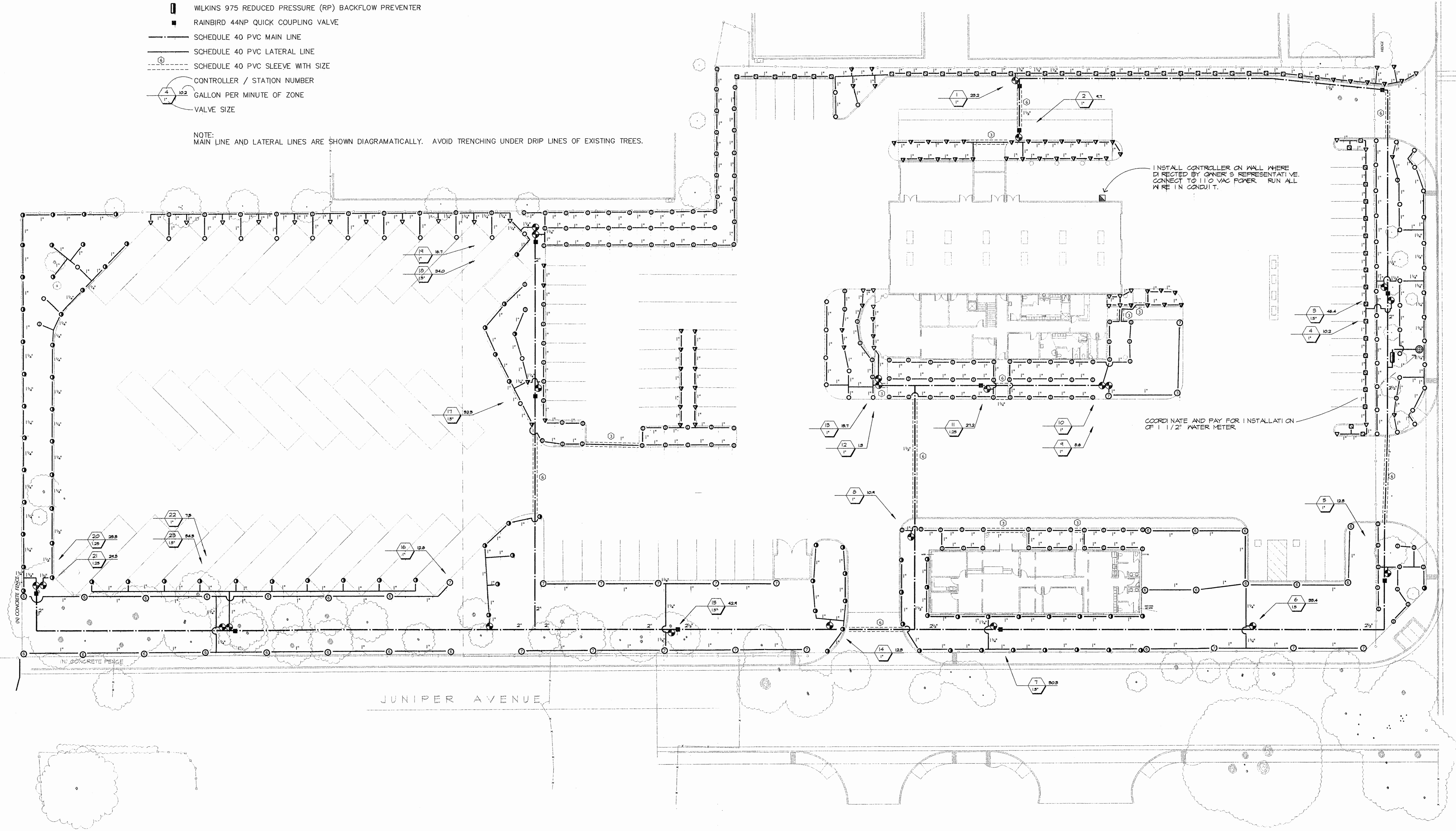


WEST COUNTY TRANSPORTATION
APRIL 19, 2000

- ⊙ TORO XP300P-XX-05 POP-UP TURF ROTOR; 4.23 GPM FOR FULL HEAD @ 40 PSI; 0.56 INCHES PER HOUR
- ⊙ TORO XP300P-XX-10 POP-UP TURF ROTOR; 8.58 GPM FOR FULL HEAD @ 40 PSI; 0.636 INCHES PER HOUR
- ⊙ TORO 570Z-12PRX-CV-15MPR-PC SPRAY HEAD, 15'R @ 30 PSI, 0.75-3.00 GPM, 1.49 IN/HR
- ⊙ TORO 570Z-12PRX-CV-12MPR-PC SPRAY HEAD, 12'R @ 30 PSI, 0.48-1.92 GPM, 1.49 IN/HR
- ⊙ TORO 570Z-12PRX-CV-10MPR-PC SPRAY HEAD, 10'R @ 30 PSI, 0.33-1.33 GPM, 1.49 IN/HR
- ⊙ TORO 570Z-12PRX-CV-8MPR-PC SPRAY HEAD, 8'R @ 30 PSI, 0.22-0.85 GPM, 1.54 IN/HR
- ⊙ TORO 570Z-12PRX-CV-5MPR-PC SPRAY HEAD, 5'R @ 30 PSI, 0.09-0.35 GPM, 1.61 IN/HR
- ⊙ TORO 570Z-12PRX-CV-4S-SST-PC SPRAY HEAD, 4x18"STRIP @ 30 PSI, 0.50 GPM, 1.34 IN/HR
- RAINBIRD ESP-24MC, 24 STATION IRRIGATION CONTROLLER
- ⊙ GRISWOLD 2000 SERIES REMOTE CONTROL VALVE
- ⊙ WILKINS 975 REDUCED PRESSURE (RP) BACKFLOW PREVENTER
- RAINBIRD 44NP QUICK COUPLING VALVE

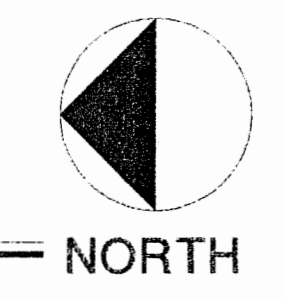


NOTE:
MAIN LINE AND LATERAL LINES ARE SHOWN DIAGRAMMATICALLY. AVOID TRENCHING UNDER DRIP LINES OF EXISTING TREES.



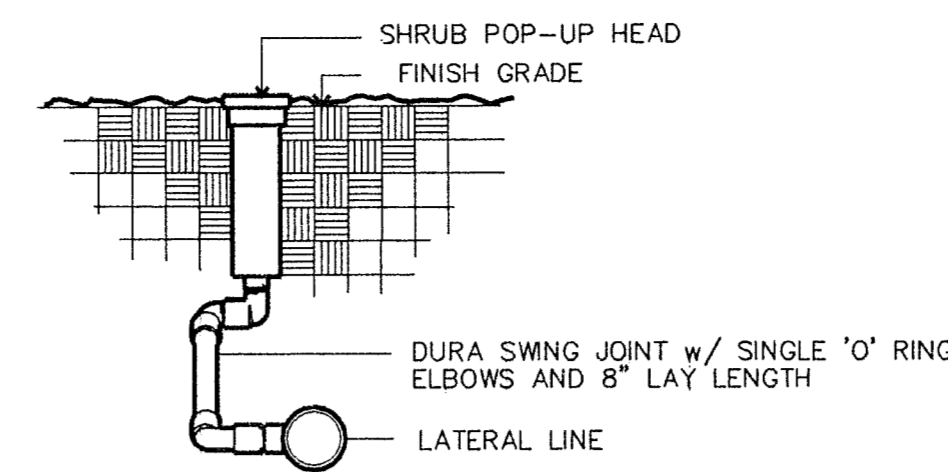
WEST ROBLES AVENUE

JUNIPER AVENUE

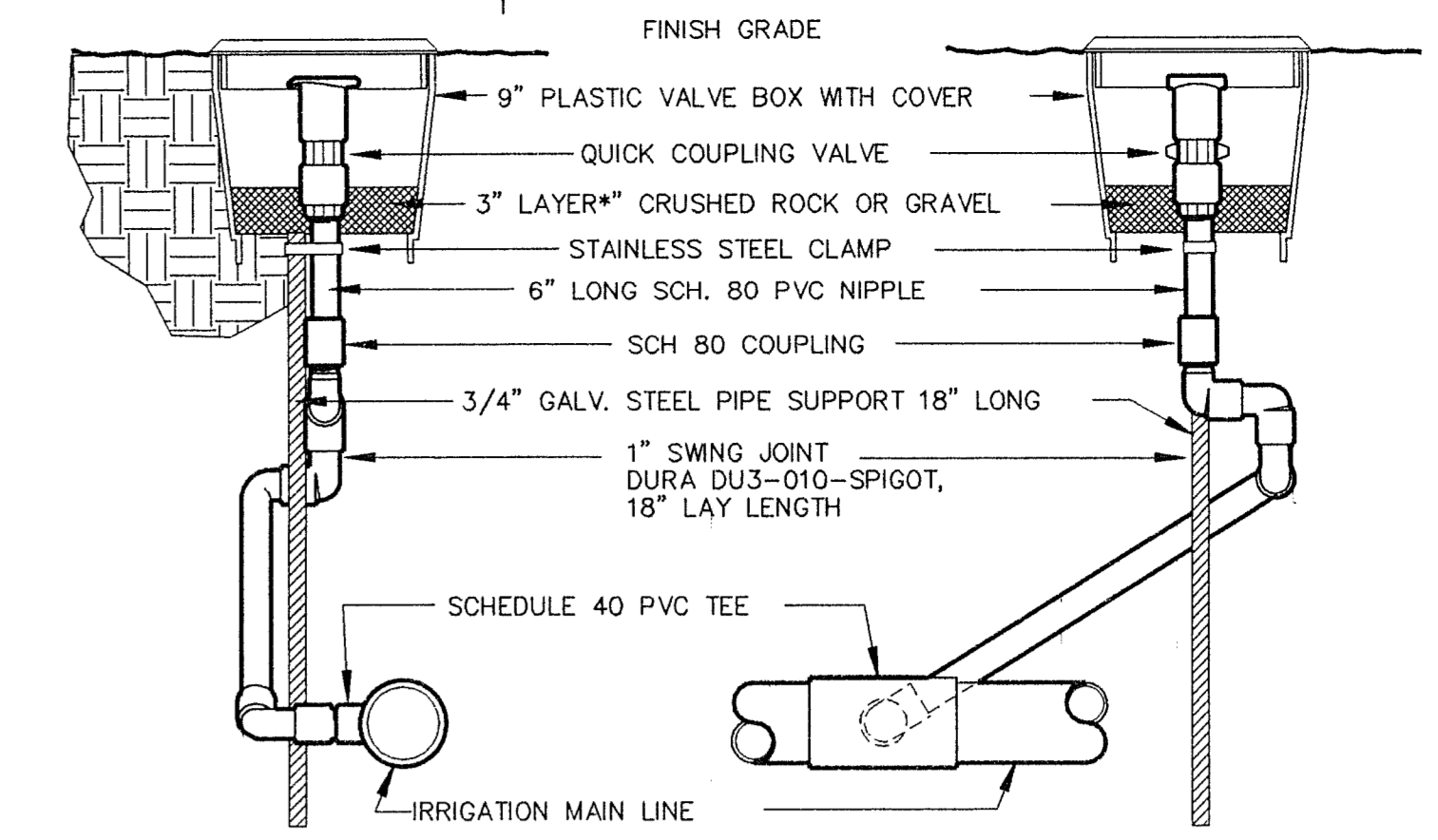


IRRIGATION PLAN

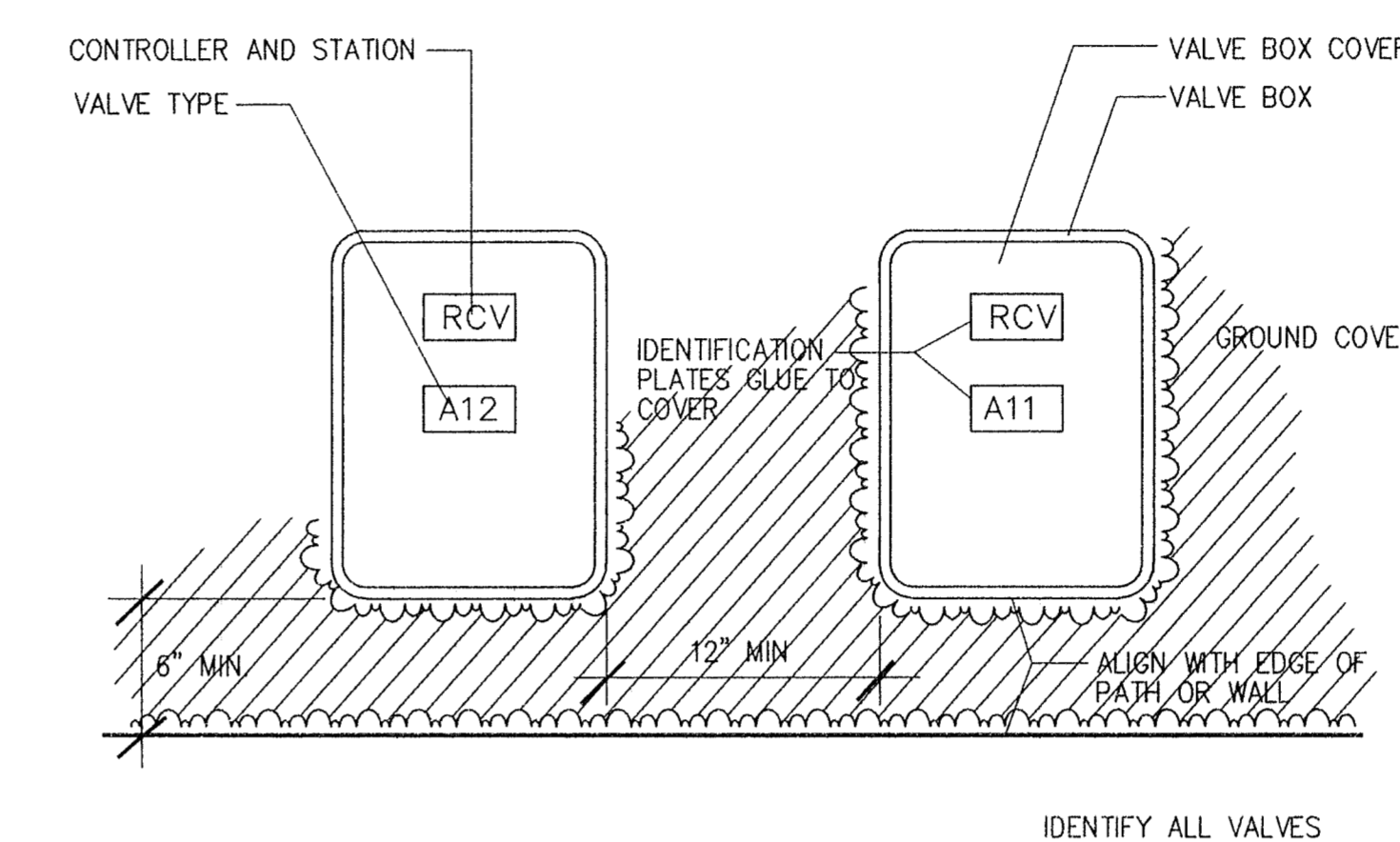
1" = 20'



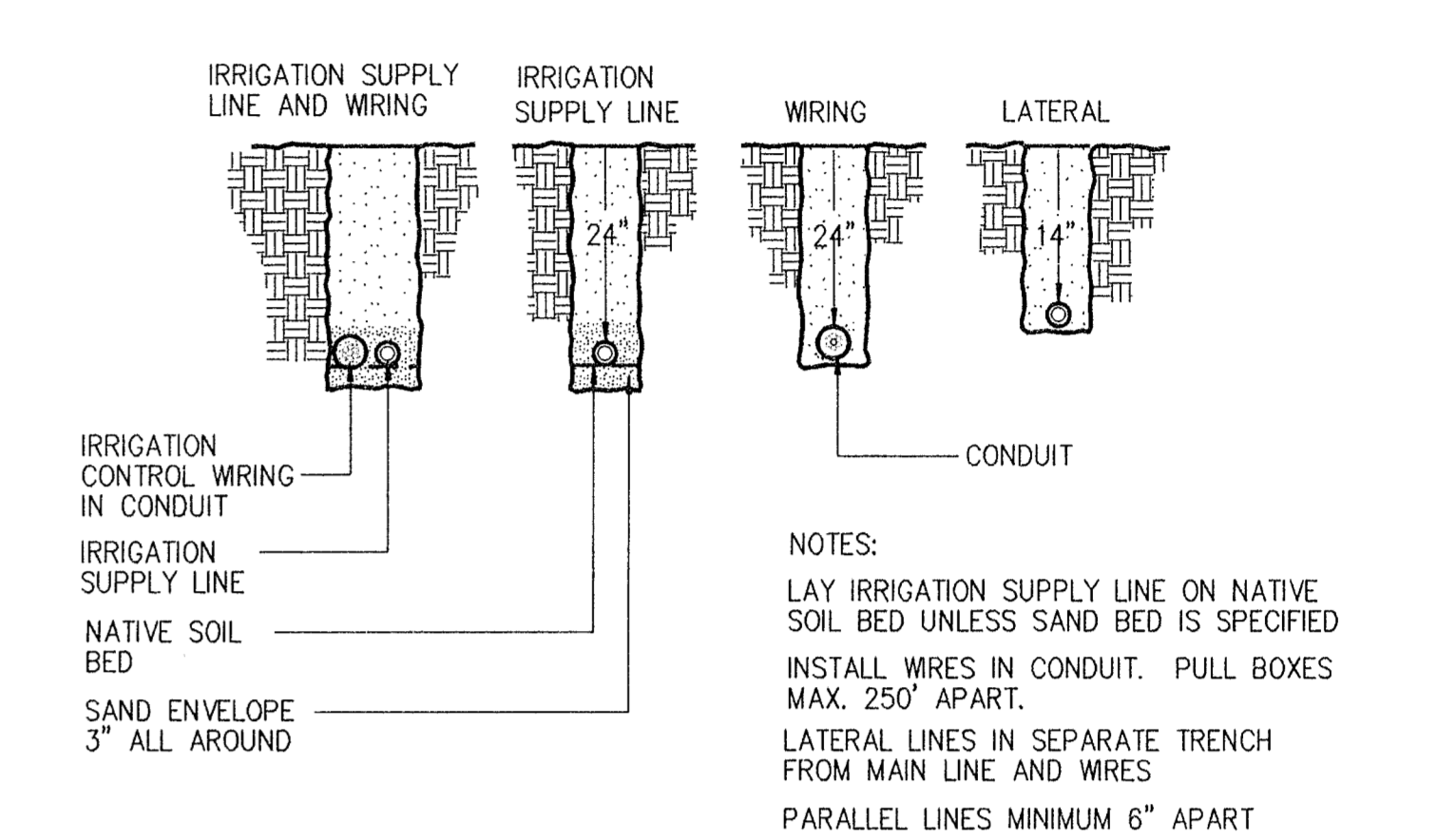
SHRUB POP-UP SPRAY HEAD
NTS



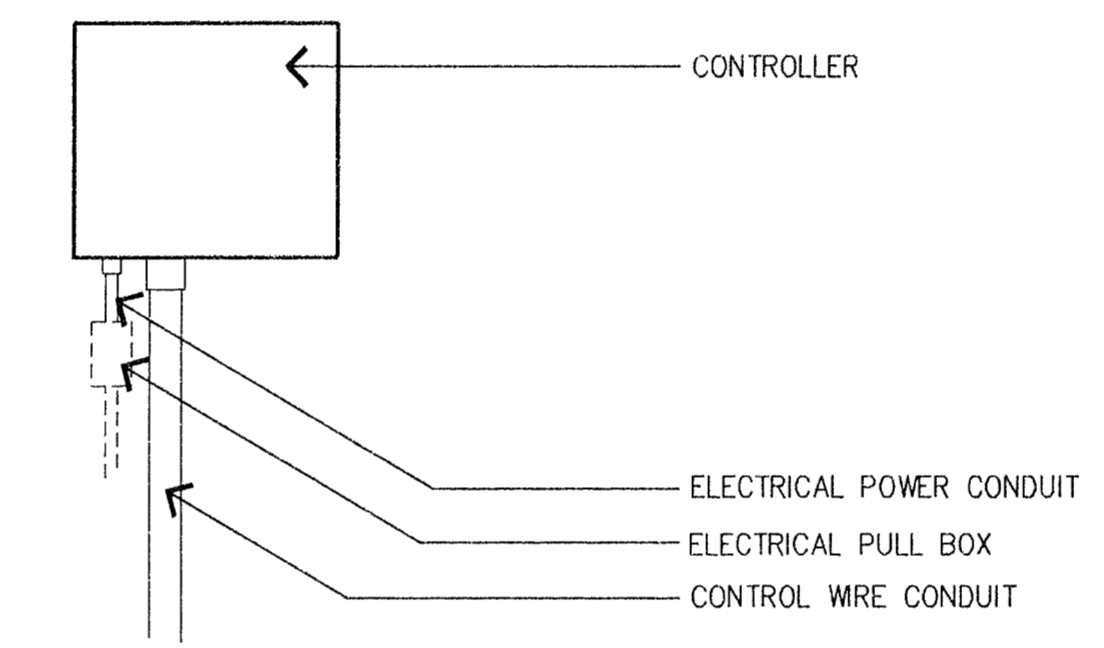
QUICK COUPLING VALVE
NTS



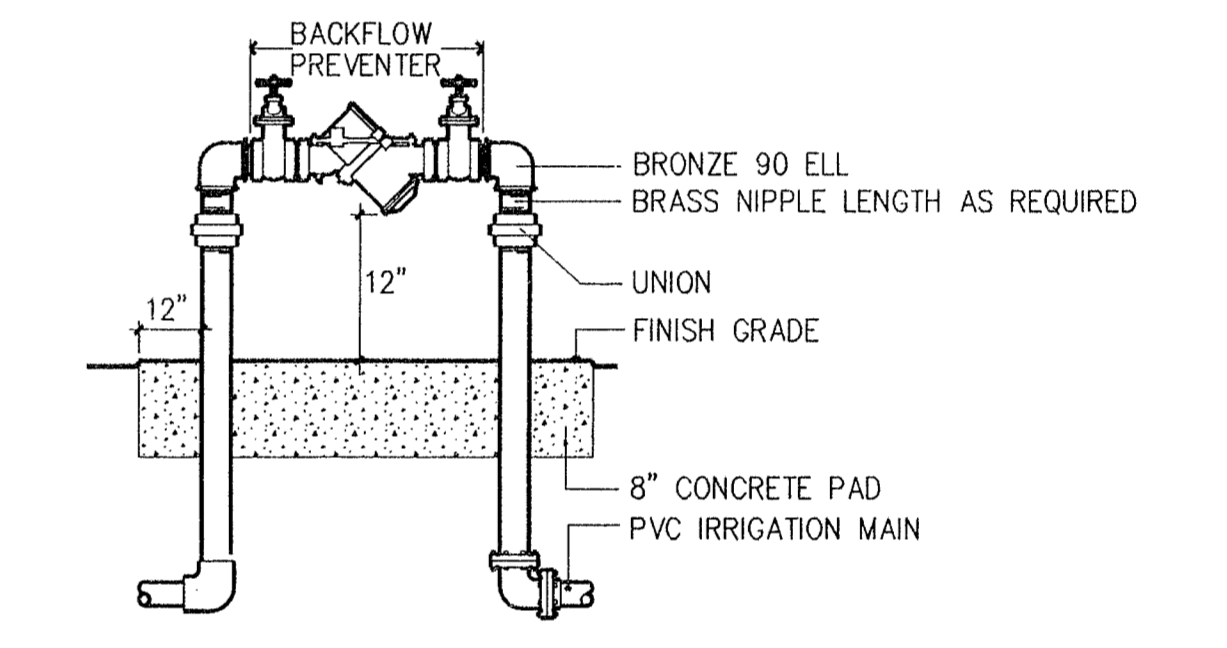
VALVE BOXES
IDENTIFY ALL VALVES



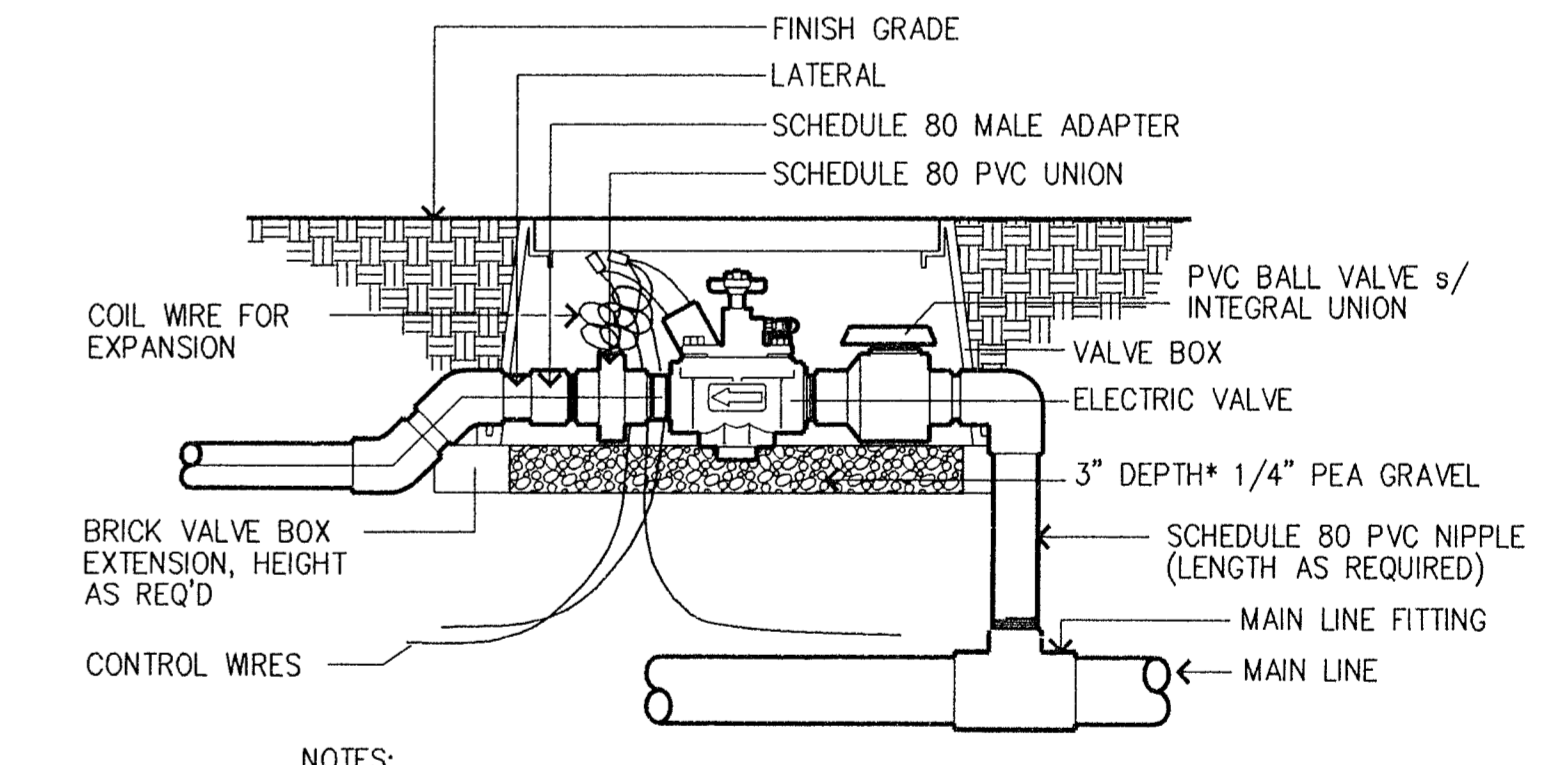
TRENCHING AND INSTALLATION



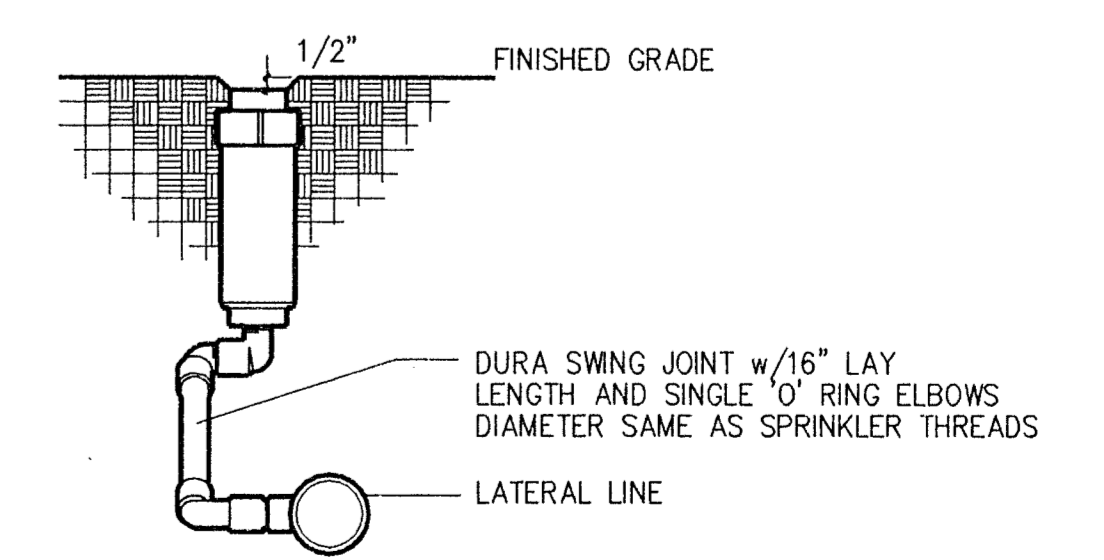
WALL MOUNT CONTROLLER
ELEVATION



REDUCED PRESSURE BACKFLOW PREVENTER
NTS



REMOTE CONTROL VALVE

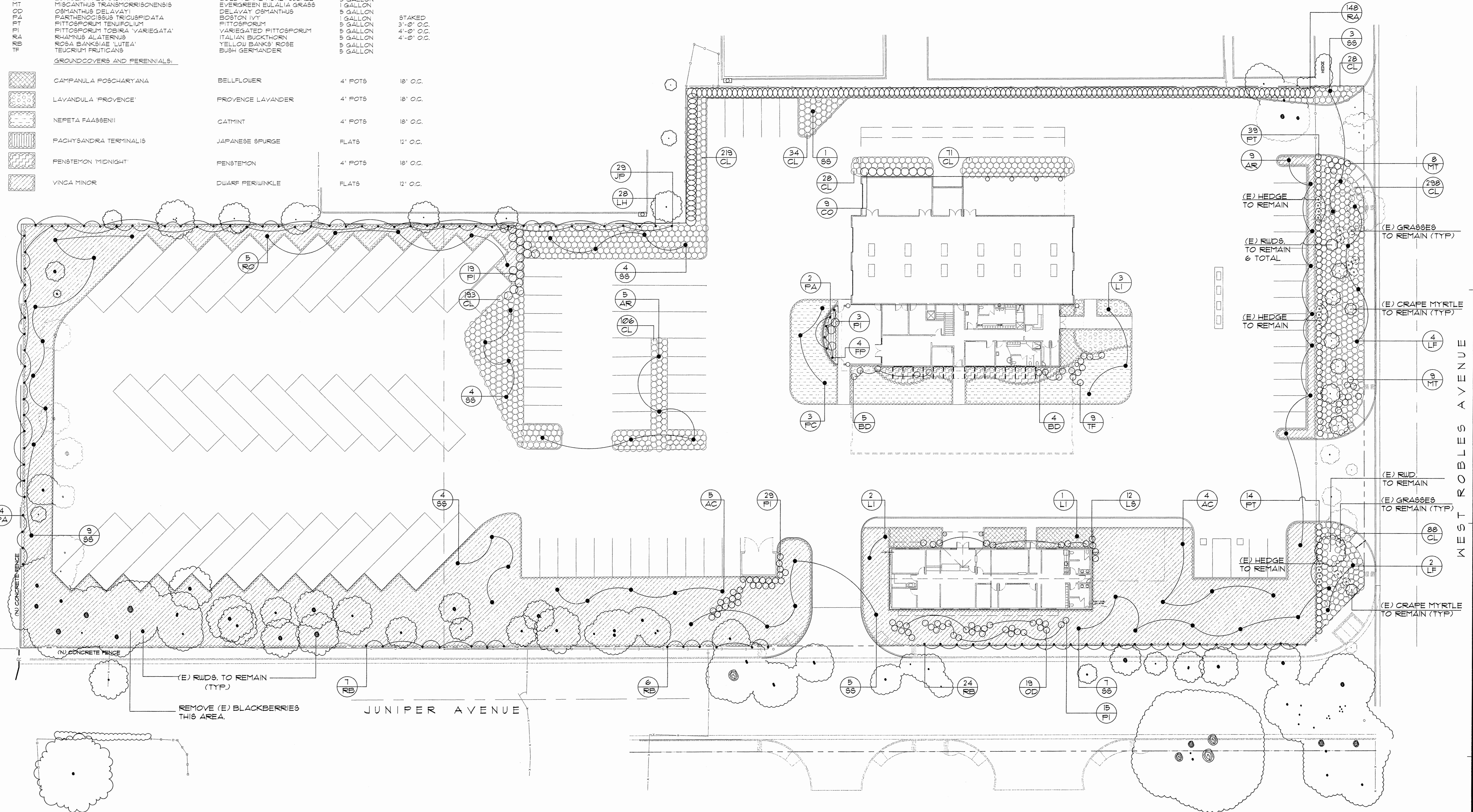


ROTOR

PLANT LIST

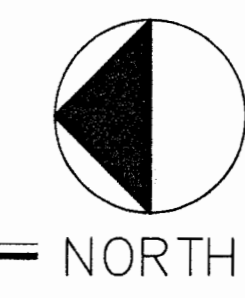
SYMBOL	BOTANICAL NAME	COMMON NAME	SIZE	SPECIFICATIONS/COMMENTS
TREES:				
AR	ACER RUBRUM 'RED SUNSET'	RED MAPLE	15 GALLON	7'-8" HT. X 2'-3" WD.
AC	ALNUS CORDATA	ITALIAN ALDER	15 GALLON	7'-8" HT. X 2'-3" WD.
LI	LAGERSTROEMIA FAUREI 'COMANCHE'	GRAPE MYRTLE	15 GALLON	7'-8" HT. X 2'-3" WD.
LI	LAGERSTROEMIA INDICA 'RUBRA'	GRAPE MYRTLE	15 GALLON	7'-8" HT. X 2'-3" WD.
PC	PISTACIA CHINENSIS	CHINESE PISTACHE	15 GALLON	7'-8" HT. X 2'-3" WD.
RO	ROBINIA AMBIGUA 'PURPLE ROBE'	BLACK LOCUST	15 GALLON	7'-8" HT. X 2'-3" WD.
SS	SEQUIOIA SEMPERVIRENS 'SANTA CRUZ'	REDWOOD	15 GALLON	6'-7" HT. X 2'-5" WD.
SHRUBS, VINES AND GRASSES:				
BD	BUDDLEIA DAVIDII	BUTTERFLY BUSH	5 GALLON	
CL	COTONEASTER LACTEUS	PARNY COTONEASTER	5 GALLON	4'-0" O.C.
CO	COTONEASTER 'LOUFAS'	SPREADING COTONEASTER	1 GALLON	3'-0" O.C.
FF	FICUS FUMILA	CREEPING FIG	1 GALLON	STAKED
JP	JASMINUM POLYANTHUM	JASMINE	5 GALLON	
LS	LEPTOSPERMUM SCOPARIUM 'H. STRYBLING'	NEW ZEALAND TEA TREE	5 GALLON	
LH	LONGICERA HECKROTTII	GOLD FLAME HONEYBUCKLE	5 GALLON	
MT	MISCANTHUS TRANSMORRISONENSIS	EVERGREEN BULALIA GRASS	1 GALLON	
OD	OSMANTHUS DELAVAYI	DELAVAY OSMANTHUS	5 GALLON	
FA	PARTHENOCISSUS TRICUSPIDATA	BOSTON IVY	1 GALLON	STAKED
PI	PITTOSPORUM TENUIFOLIUM	PITTOSPORUM	5 GALLON	3'-0" O.C.
PI	PITTOSPORUM TOBIIRA 'VARIEGATA'	VARIEGATED PITTOSPORUM	5 GALLON	4'-0" O.C.
RA	RHAMNUS ALATERNUS	ITALIAN BUCKTHORN	5 GALLON	4'-0" O.C.
RE	ROSA BANKSIAE 'LUTEA'	YELLOW BANKS' ROSE	5 GALLON	
TF	TEUCRIUM FRUTICANS	BUSH GERMANDER	5 GALLON	
GROUNDCOVERS AND PERENNIALS:				
	CAMPANULA POSCHARYANA	BELLFLOWER	4" POTS	18" O.C.
	LAVANDULA 'PROVENCE'	PROVENCE LAVANDER	4" POTS	18" O.C.
	NEPETA FAASSENII	CATMINT	4" POTS	18" O.C.
	PACHYSANDRA TERMINALIS	JAPANESE SPURGE	FLATS	12" O.C.
	FENSTEMON 'MIDNIGHT'	FENSTEMON	4" POTS	18" O.C.
	VINCA MINOR	DWARF PERIWINKLE	FLATS	12" O.C.

	CAMPANULA POSCHARYANA	BELLFLOWER	4" POTS	18" O.C.
	LAVANDULA 'PROVENCE'	PROVENCE LAVANDER	4" POTS	18" O.C.
	NEPETA FAASSENII	CATMINT	4" POTS	18" O.C.
	PACHYSANDRA TERMINALIS	JAPANESE SPURGE	FLATS	12" O.C.
	FENSTEMON 'MIDNIGHT'	FENSTEMON	4" POTS	18" O.C.
	VINCA MINOR	DWARF PERIWINKLE	FLATS	12" O.C.



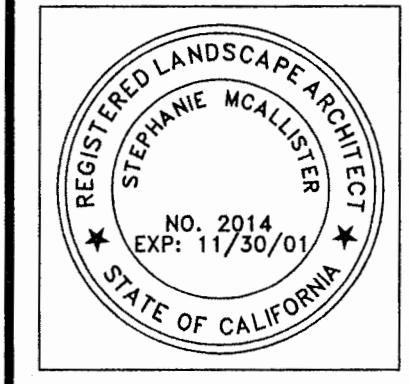
PLANTING PLAN

1" = 20'



200 E. STREET
Suite 100
Santa Rosa, CA 95404
Tel: (707) 544-3920
Fax: (707) 544-2514

© Copyright 1999



Stephanie McAllister
Landscape Architecture
145 Keller Street
Petrolia, CA 95652
Telephone: (707) 778-7893
Facsimile: (707) 778-7847

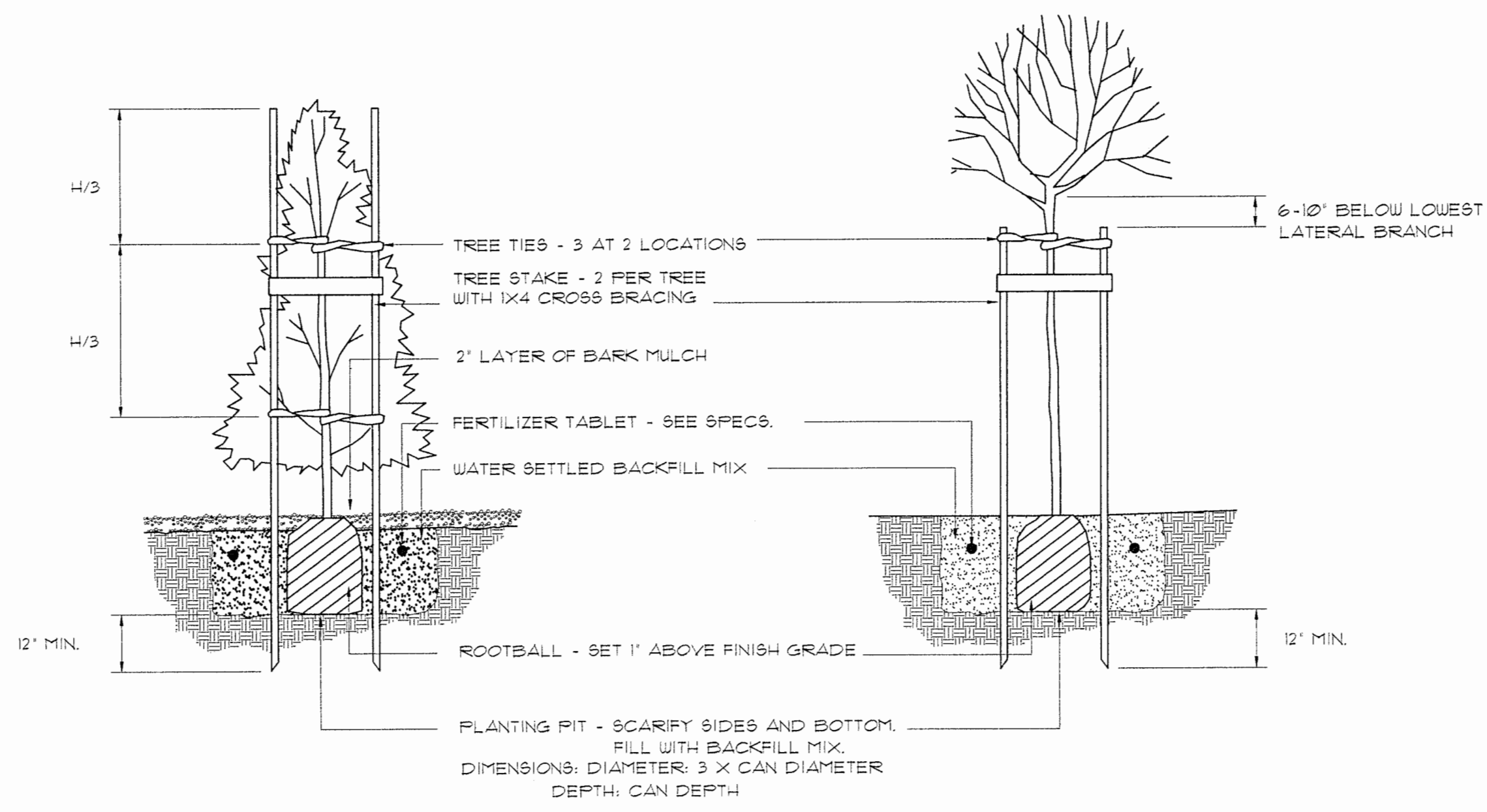
West County
Transportation
WCTA BUS MAINTENANCE FACILITY

PLANTING PLAN

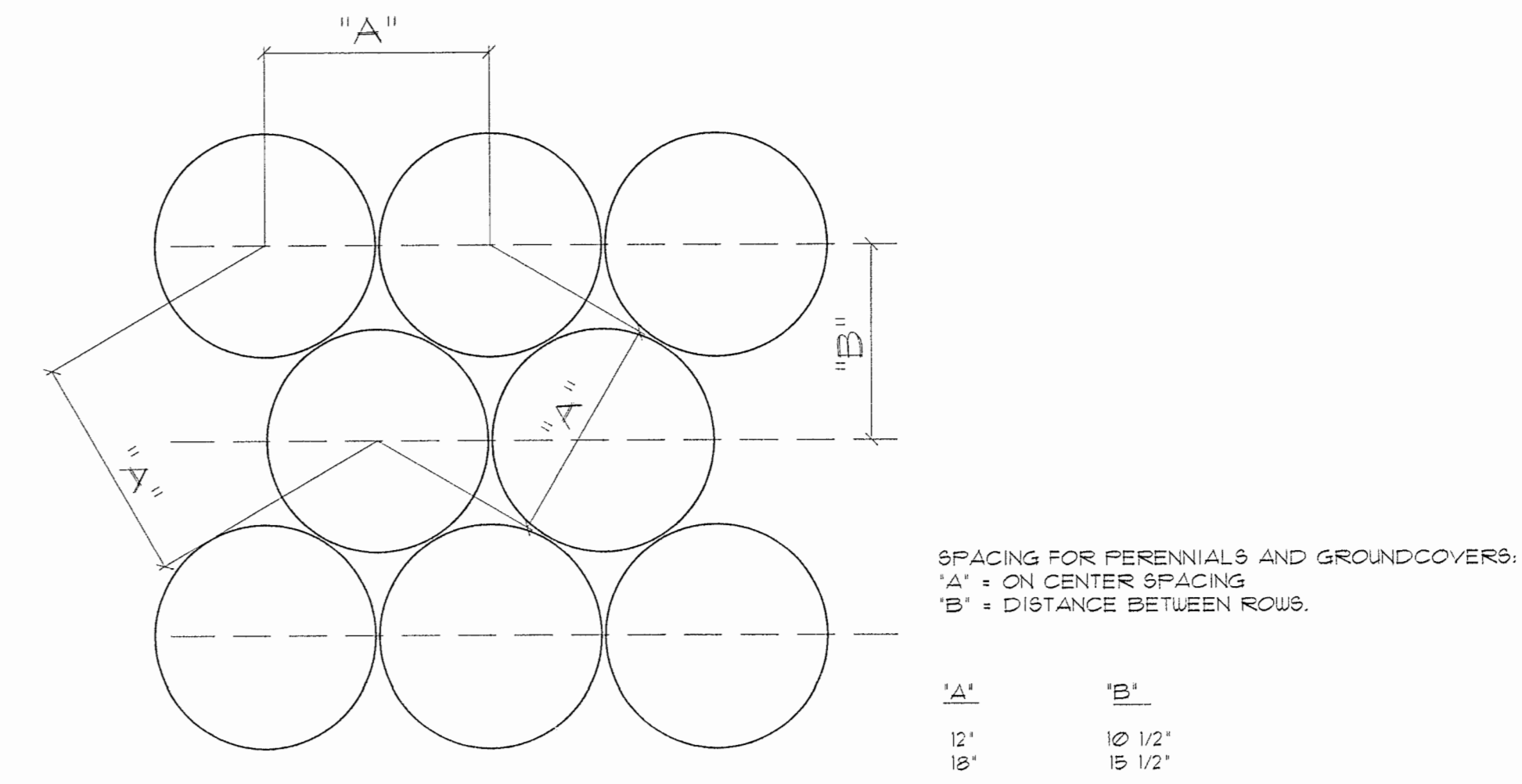
Job No: G9717
Drawn By: SM
Checked By: SM
Cdd File: L2.1
Date: 19 JULY '00

Revisions

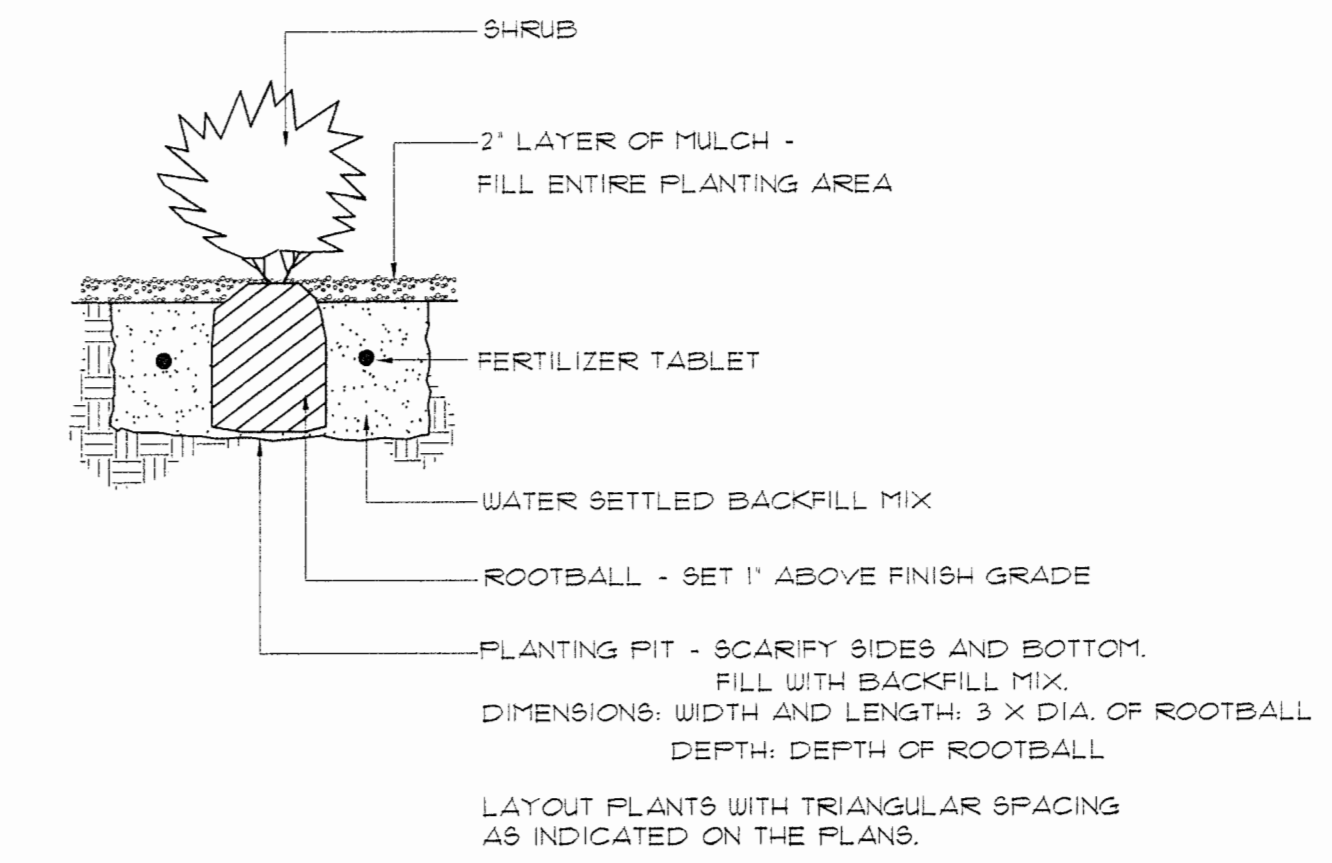
Sheet Number
L2.1
of 4



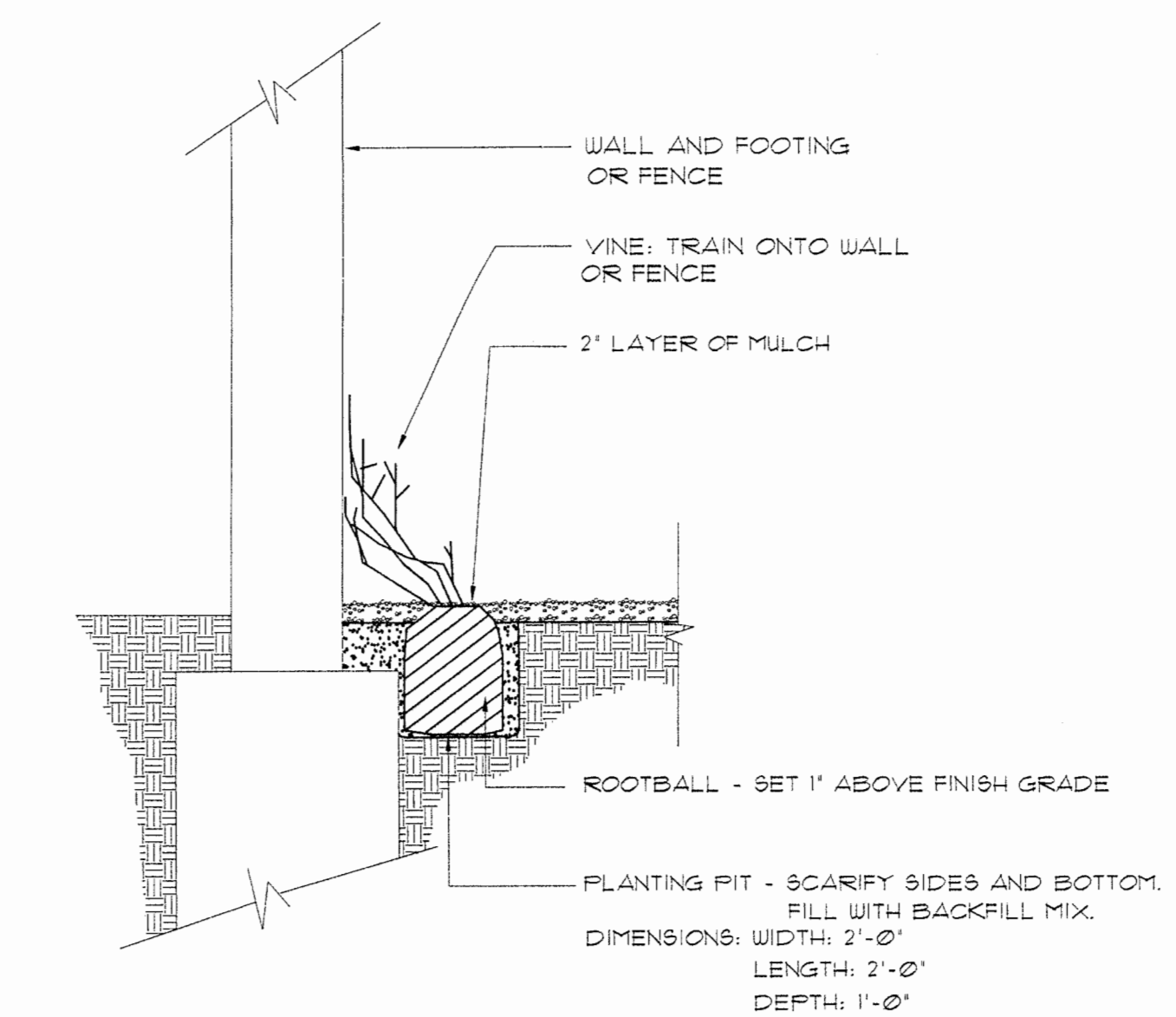
4 TREE PLANTING DETAIL
NOT TO SCALE



1 TRIANGULAR SPACING DIAGRAM
NOT TO SCALE



2 SHRUB PLANTING DETAIL
NOT TO SCALE



3 VINE PLANTING DETAIL
NOT TO SCALE