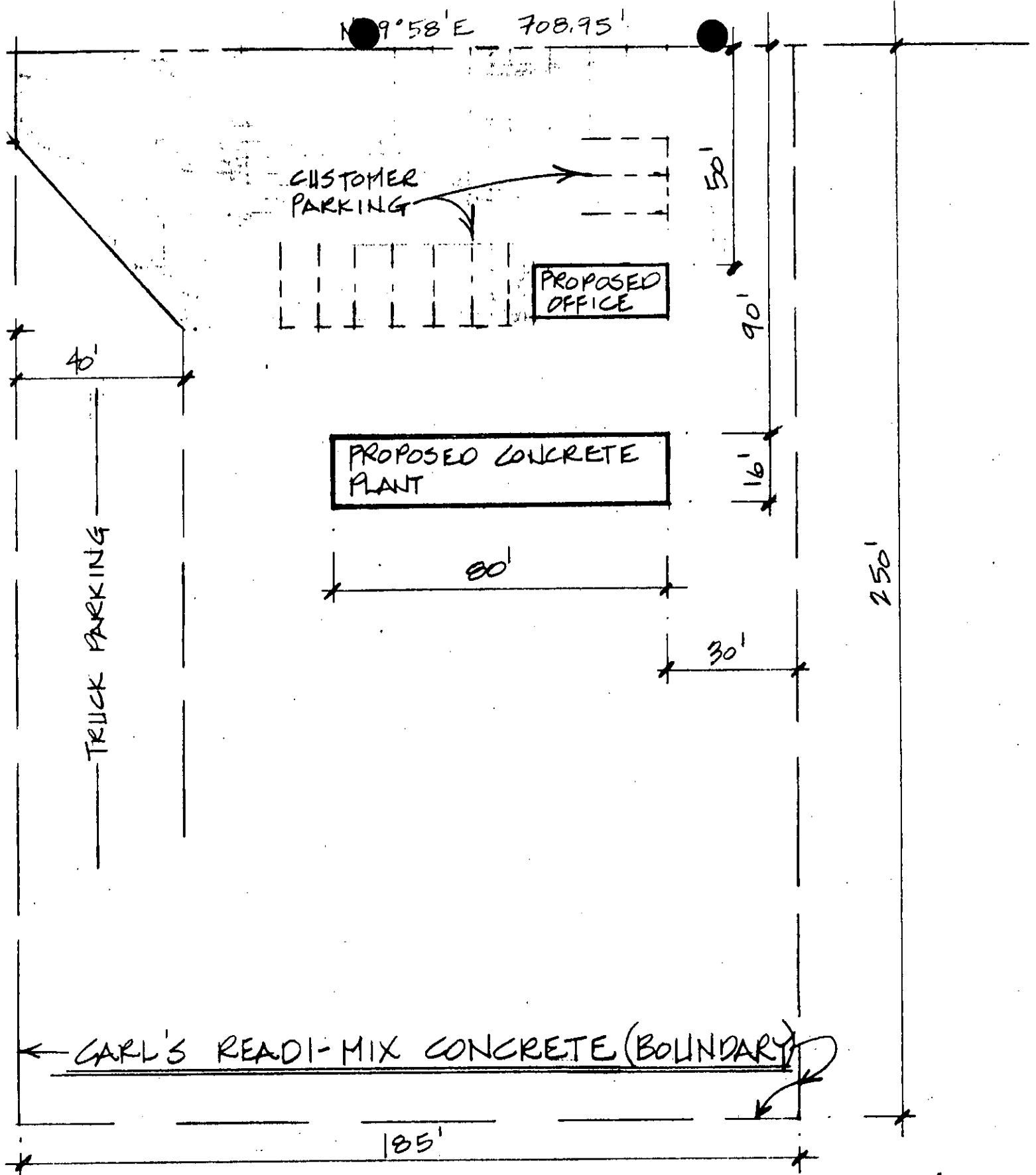


N 9° 58' E 708.95'



TRUCK PARKING

CUSTOMER PARKING

PROPOSED OFFICE

PROPOSED CONCRETE PLANT

CARL'S READI-MIX CONCRETE (BOUNDARY)

SITE: 3660 COPPERHILL LN
SANTA ROSA, CA

FOR: CARL DAVIS
P.O. BOX 454
FULTON, CA 95439
6/20/07