

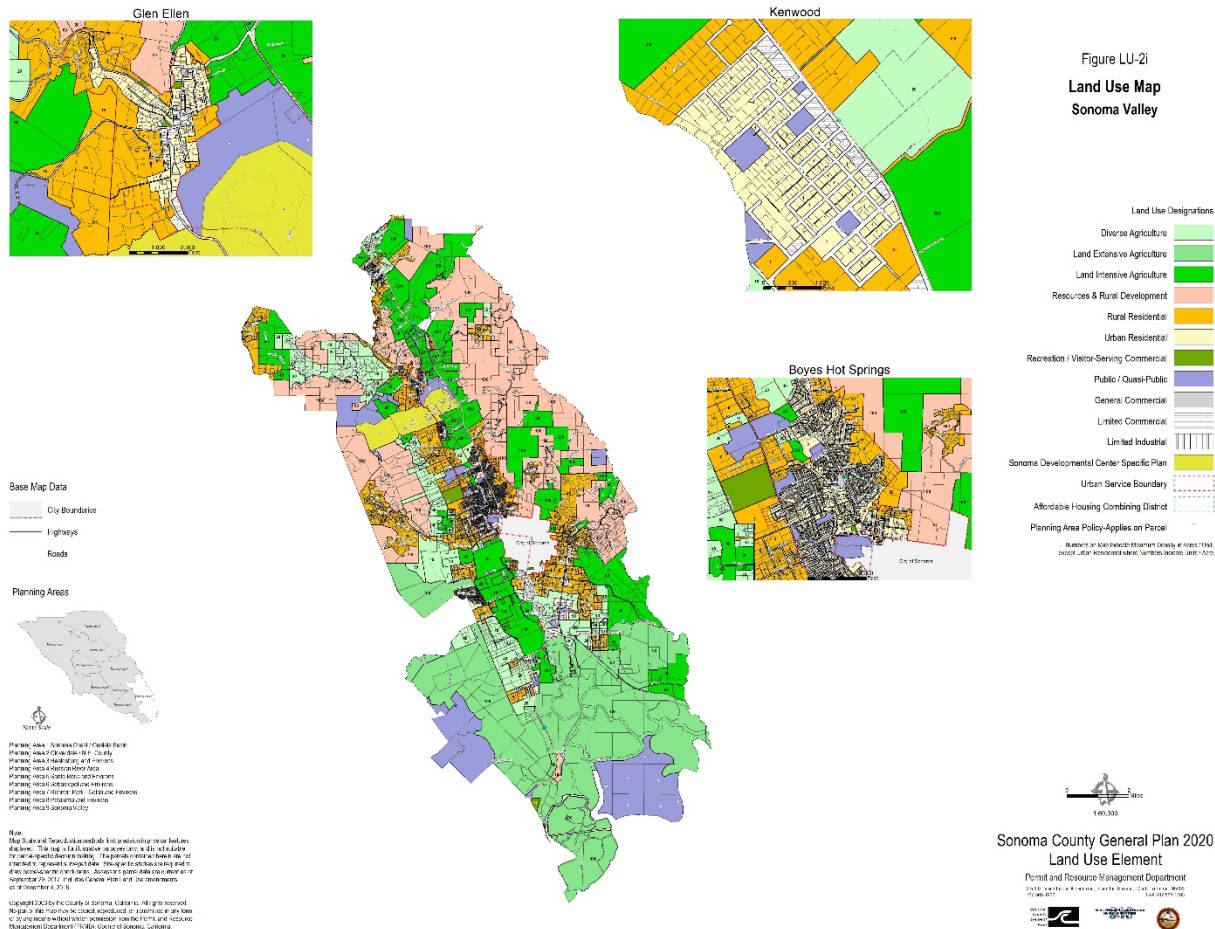
# Sonoma Developmental Center Specific Plan – General Plan Consistency

Brian Oh  
Permit Sonoma  
Sept 26, 2022

# General Plan Consistency

- Proposed Specific Plan goals and policies are consistent with the Sonoma County General Plan
- Two General Plan amendments will be needed
  - ▣ Update land use map
  - ▣ Add a new Land Use Element policy

# Update Land Use Figure LU-2i map



- New land use designation to reflect Sonoma Developmental Center parcels

# Add a new Land Use Element policy

---

- The County shall use the Sonoma Developmental Center Specific Plan to implement this plan and all development located in the Sonoma Developmental Center Specific Plan area, noted in Figure LU-2i, shall conform with policies and programs identified in the Sonoma Developmental Center Specific Plan (*proposed amendment to General Plan 2020*)

# Proposed Zoning - PCSDC

- Planned Community, Sonoma Developmental Center
  - ▣ Low/medium residential
  - ▣ Medium/flex residential
  - ▣ Flex
    - Hotel overlay
  - ▣ Institutional
  - ▣ Utilities
  - ▣ Parks
  - ▣ Open space
    - Preserved
    - Buffer

For more details, see draft Specific Plan Chapter 4 (Land Use) and Chapter 5 (Community Design)\*

# Proposed Land Use

