

An aerial photograph of a city grid, showing streets and buildings, with a dark, semi-transparent overlay. The text is centered in white, bold, uppercase letters.

SECTION G:
RETAIL / DAYCARE PARCEL & VOCATIONAL
TRAINING CENTER

TABLE OF CONTENTS		
PJR ITEM	NO. #	
NONE	B	SECTION B: PROJECT-WIDE INFORMATION (COVER SHEET)
NONE	B1	NOT USED
NONE	B2	TABLE OF CONTENTS
NONE	B3	LOCATION MAP
3C	B4	OVERALL SITE PLAN
3D	B5	EXISTING STRUCTURES AND LAND USES
3D	B6	PROPOSED STRUCTURES AND LAND USES
3G	B7	PROXIMITY TO TRANSIT AND TRANSIT HEADWAYS. EXISTING PEDESTRIAN AND BICYCLE ACCESS
3H	B8	PROPOSED PARKING.
5A	B9	ILLUSTRATIVE MASTER PLAN
none	B9.1	AERIAL VIEW
3E & 5B	B10	CIRCULATION PLAN
3Y & 5C	B11	TECHNICAL SITE PLAN MEETING THE REQUIREMENTS OF PJR-129, SITE PLAN REQUIREMENTS FOR PLANNING APPLICATIONS.
NONE	B11.1	TENTATIVE MAPS FROM PJR-078 APPLICATION
3D	B12	OVERALL UTILITY PLAN
9	B13	TREE AND WETLAND PROTECTION PLAN
3Q	B13.1	WETLANDS ON SITE
3Q	B13.2	HABITAT COMMUNITIES
3Q	B13.3	STORM WATER CONTROL PLAN
13	B14	SITE PHOTOS

PJR ITEM	NO. #	
NONE	C	SECTION C: FOR-RENT RESIDENTIAL COMMUNITY - BURBANK HOUSING
7	C1	PRELIMINARY ARCHITECTURAL PLANS
7	C2	PRELIMINARY ARCHITECTURAL ELEVATIONS WITH DIMENSIONED HEIGHTS. REFER TO MATERIALS SHEET FOR MATERIALS.
2-Jul	SHOWN ON C2 SHEETS	ALL MECHANICAL EQUIPMENT , EXTERIOR LIGHTS, TRASH ENCLOSURES, AND OTHER EXTERIOR STRUCTURES
7-2A		PROPOSED FENCING AND WALLS
3-Jul	C3	CROSS-SECTIONS FOR EACH STRUCTURE AND THE BUILDING'S HEIGHT
6	C4	PRELIMINARY SITE GRADING AND DRAINAGE PLAN
8A	C5	PRELIMINARY LANDSCAPE PLANS
8B	C6	PRELIMINARY PLANTING SELECTIONS
10	C7	PRELIMINARY LIGHTING PLANS
11	C8	PARKING PLAN:
7-1 AND 12	C9	MATERIALS AND COLORS

PJR ITEM	NO. #	
NONE	D	SECTION D: FOR-SALE RESIDENTIAL COMMUNITY - CITY VENTURES
7	D1	PRELIMINARY ARCHITECTURAL PLANS
7	D2	PRELIMINARY ARCHITECTURAL ELEVATIONS WITH DIMENSIONED HEIGHTS. REFER TO MATERIALS SHEET FOR MATERIALS.
2-Jul	SHOWN ON D2 SHEETS	ALL MECHANICAL EQUIPMENT , EXTERIOR LIGHTS, TRASH ENCLOSURES, AND OTHER EXTERIOR STRUCTURES
7-2A		PROPOSED FENCING AND WALLS
3-Jul	D3	CROSS-SECTIONS FOR EACH STRUCTURE AND THE BUILDING'S HEIGHT
6	D4	PRELIMINARY SITE GRADING AND DRAINAGE PLAN
8A	D5	PRELIMINARY LANDSCAPE PLANS
8B	D6	PRELIMINARY PLANTING SELECTIONS
10	D7	PRELIMINARY LIGHTING PLANS
11	D8	PARKING PLAN:
7-1 AND 12	D9	MATERIALS AND COLORS

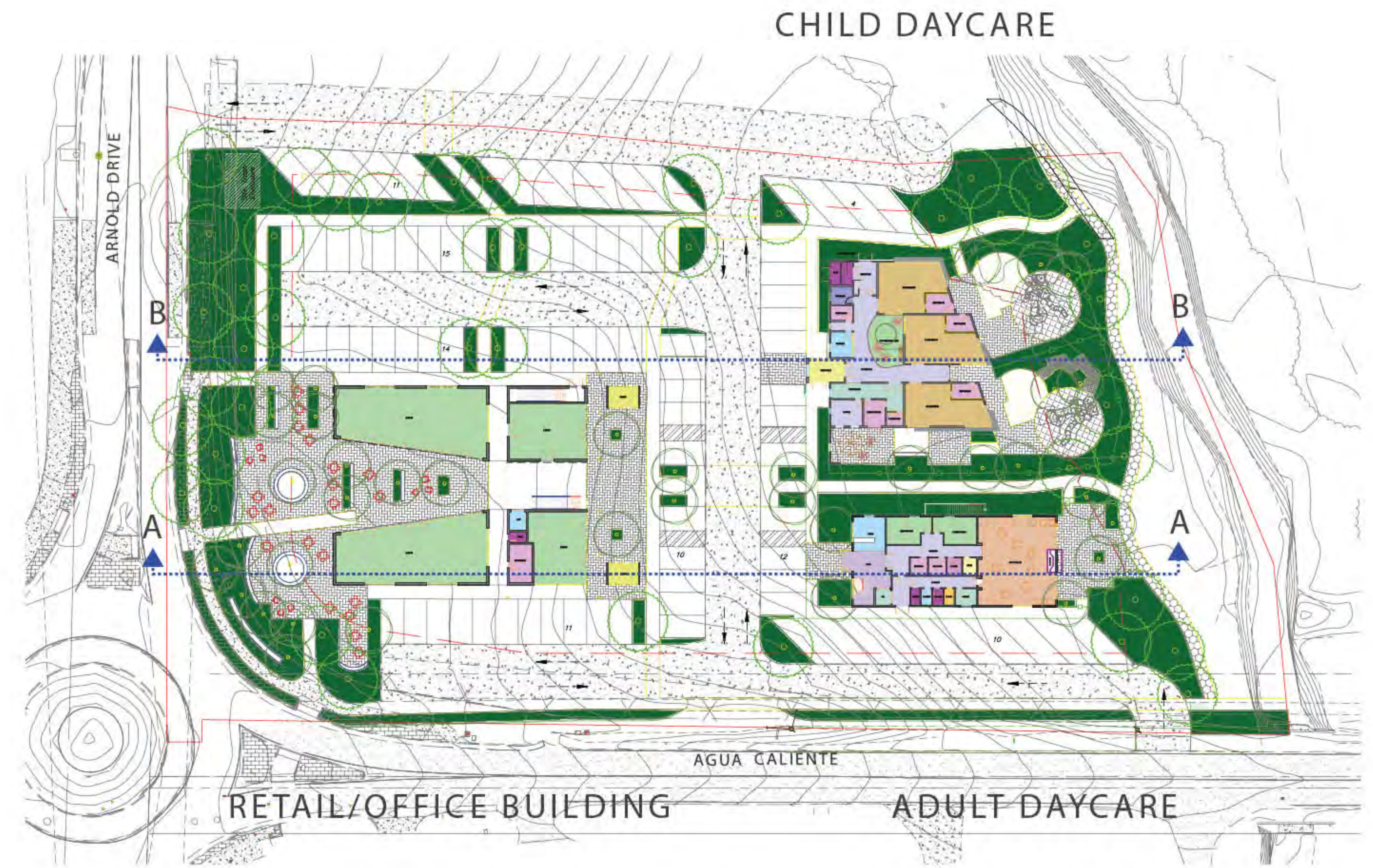
PJR ITEM	NO. #	
NONE	NONE	SECTION E: CONTINUING CARE RESIDENTIAL COMMUNITY - SRG
7	E1	PRELIMINARY ARCHITECTURAL PLANS
7	E2	PRELIMINARY ARCHITECTURAL ELEVATIONS WITH DIMENSIONED HEIGHTS. REFER TO MATERIALS SHEET FOR MATERIALS.
2-Jul	SHOWN ON E2 SHEETS	ALL MECHANICAL EQUIPMENT , EXTERIOR LIGHTS, TRASH ENCLOSURES, AND OTHER EXTERIOR STRUCTURES
7-2A		PROPOSED FENCING AND WALLS
3-Jul	E3	CROSS-SECTIONS FOR EACH STRUCTURE AND THE BUILDING'S HEIGHT
6	E4	PRELIMINARY SITE GRADING AND DRAINAGE PLAN
8A	E5	PRELIMINARY LANDSCAPE PLANS
8B	E6	PRELIMINARY PLANTING SELECTIONS
10	E7	PRELIMINARY LIGHTING PLANS
11	E8	PARKING PLAN:
7-1 AND 12	E9	MATERIALS AND COLORS

PJR ITEM	NO. #	
NONE	F	SECTION F: HOTEL DEVELOPMENT - CANYON GROUP
7	F1	PRELIMINARY ARCHITECTURAL PLANS
7	F2	PRELIMINARY ARCHITECTURAL ELEVATIONS WITH DIMENSIONED HEIGHTS. REFER TO MATERIALS SHEET FOR MATERIALS.
2-Jul	SHOWN ON F2 SHEETS	ALL MECHANICAL EQUIPMENT , EXTERIOR LIGHTS, TRASH ENCLOSURES, AND OTHER EXTERIOR STRUCTURES
7-2A		PROPOSED FENCING AND WALLS
3-Jul	F3	CROSS-SECTIONS FOR EACH STRUCTURE AND THE BUILDING'S HEIGHT
6	F4	PRELIMINARY SITE GRADING AND DRAINAGE PLAN
8A	F5	PRELIMINARY LANDSCAPE PLANS
8B	F6	PRELIMINARY PLANTING SELECTIONS
10	F7	PRELIMINARY LIGHTING PLANS
11	F8	PARKING PLAN:
7-1 AND 12	F9	MATERIALS AND COLORS

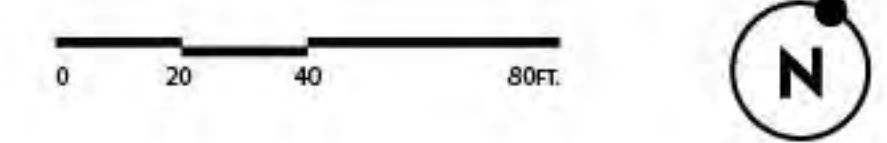
PJR ITEM	NO. #	
NONE	G	SECTION G: RETAIL / DAYCARE PARCEL & VOCATIONAL TRAINING PARCEL
7	G1	PRELIMINARY ARCHITECTURAL PLANS
7	G2	PRELIMINARY ARCHITECTURAL ELEVATIONS WITH DIMENSIONED HEIGHTS. REFER TO MATERIALS SHEET FOR MATERIALS.
2-Jul	SHOWN ON G2 SHEETS	ALL MECHANICAL EQUIPMENT , EXTERIOR LIGHTS, TRASH ENCLOSURES, AND OTHER EXTERIOR STRUCTURES
7-2A		PROPOSED FENCING AND WALLS
3-Jul	G3	CROSS-SECTIONS FOR EACH STRUCTURE AND THE BUILDING'S HEIGHT
6	G4	PRELIMINARY SITE GRADING AND DRAINAGE PLAN
8A	G5	PRELIMINARY LANDSCAPE PLANS
8B	G6	PRELIMINARY PLANTING SELECTIONS
10	G7	PRELIMINARY LIGHTING PLANS
11	G8	PARKING PLAN:
7-1 AND 12	G9	MATERIALS AND COLORS



PARTIAL SITE PLAN - VOCATIONAL TRAINING CENTER



PARTIAL SITE PLAN - RETAIL, CHILD DAYCARE & ADULT DAYCARE

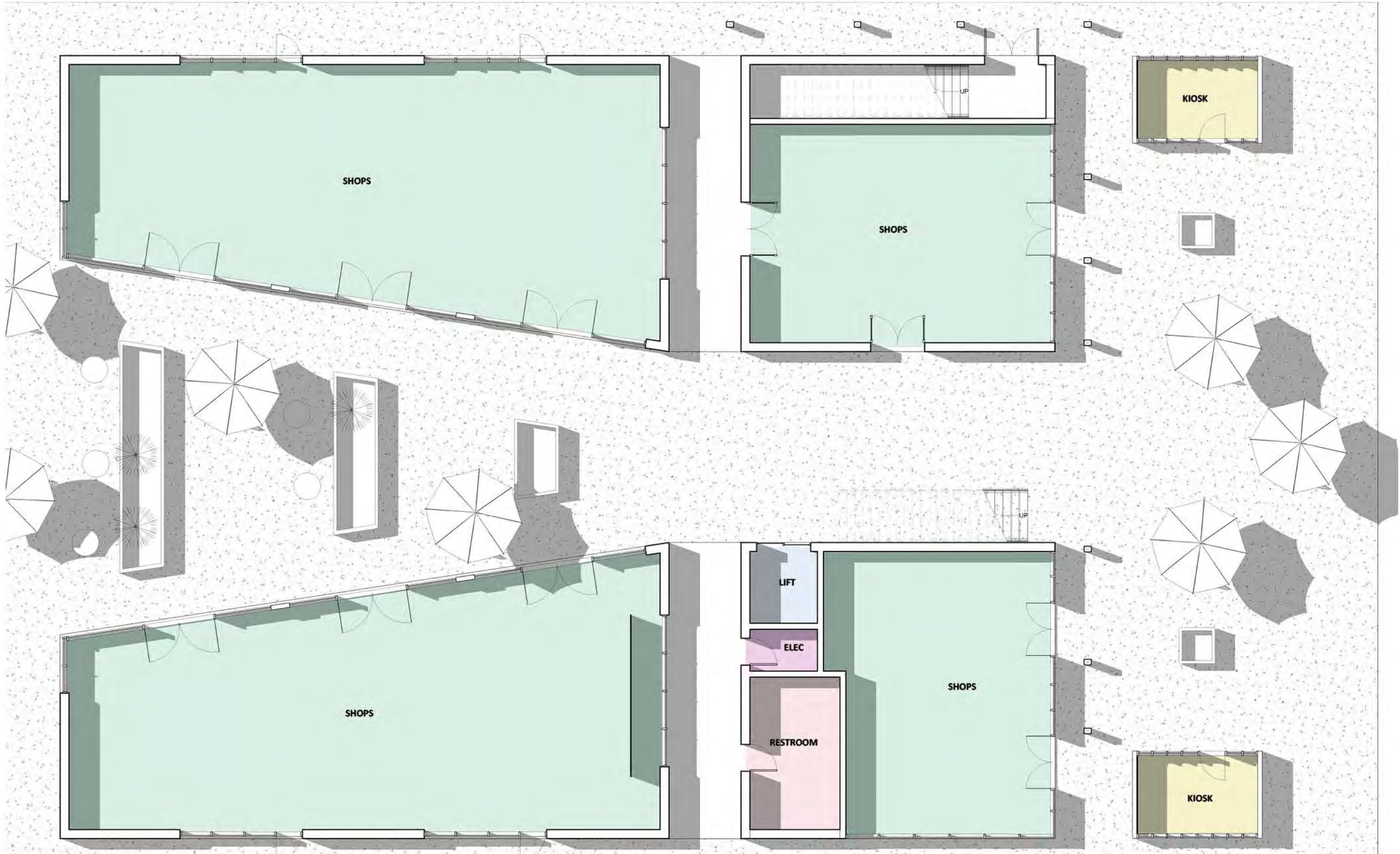


SPACE	UNIT	AREA
VOCATIONAL TRAINING CENTER	1	10000SQ.FT.
STRUCTURED PARKING		0
TOTAL WITH STRUCTURED PARKING		10000SQ.FT.

SPACE	UNIT	AREA
RETAIL SPACE	1	6500SQ.FT.
OFFICE SPACE	2	3500SQ.FT.
STRUCTURED PARKING		0
TOTAL WITH STRUCTURED PARKING		10000SQ.FT.

SPACE	UNIT	AREA
CHILD DAYCARE CENTER	1	4000SQ.FT.
STRUCTURED PARKING		0
TOTAL WITH STRUCTURED PARKING		4000SQ.FT.

SPACE	UNIT	AREA
ADULT DAYCARE CENTER	1	5600SQ.FT.
STRUCTURED PARKING		0
TOTAL WITH STRUCTURED PARKING		5600SQ.FT.



LEGEND

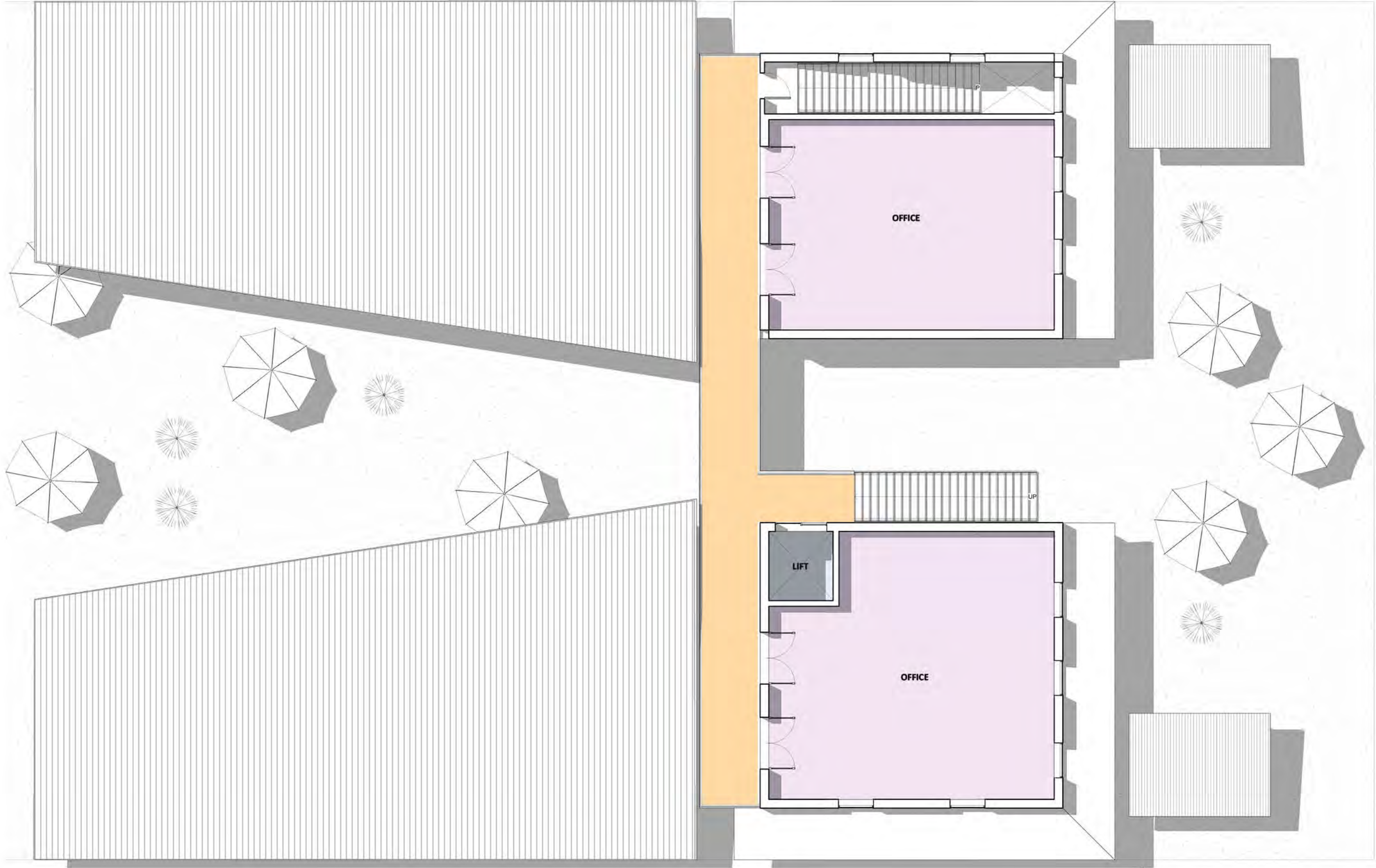
- RETAIL SHOPS
- RESTROOM
- KIOSK
- OFFICES



RETAIL/OFFICE BUILDING

- RETAIL SHOPS
- OFFICES
- OUTDOOR COURTYARD
- 43 PARKING SPACES

NO.	TYPE	NO. OF FLOOR	FLOOR	GROSS (SF)	TOTAL GROSS (SF)
1.	RETAIL/OFFICE BUILDING	2	GROUND FLOOR	6500	10000
			SECOND FLOOR	3500	



LEGEND

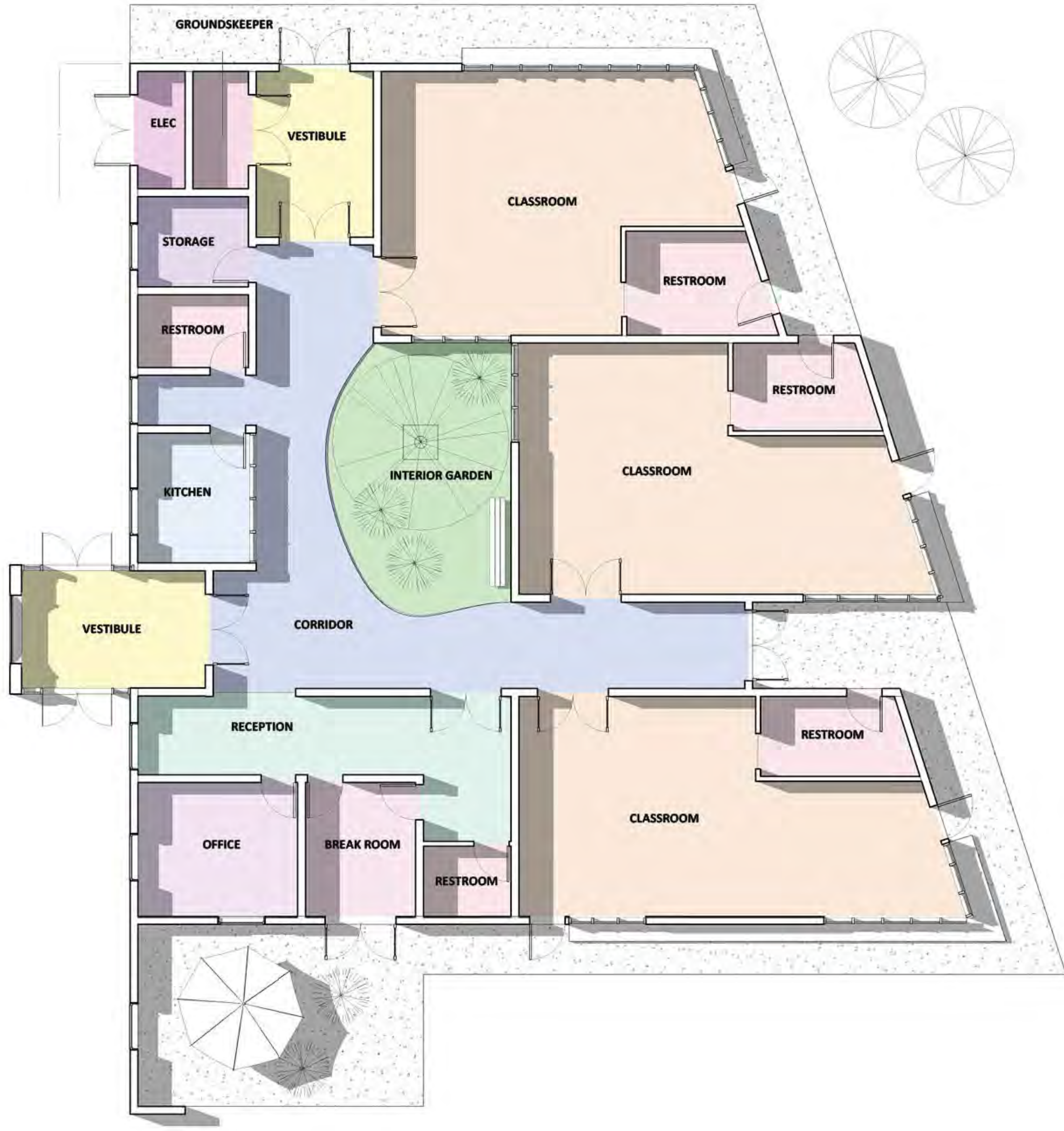
- RETAIL SHOPS
- RESTROOM
- KIOSK
- OFFICES



RETAIL/OFFICE BUILDING

- RETAIL SHOPS
- OFFICES
- OUTDOOR COURTYARD
- 43 PARKING SPACES

NO.	TYPE	NO. OF FLOOR	FLOOR	GROSS (SF)	TOTAL GROSS (SF)
1.	RETAIL/OFFICE BUILDING	2	GROUND FLOOR	6500	10000
			SECOND FLOOR	3500	



LEGEND

- RECEPTION
- CLASSROOM
- RESTROOMS
- KITCHEN
- CORRIDOR
- ADMIN



CHILD DAYCARE

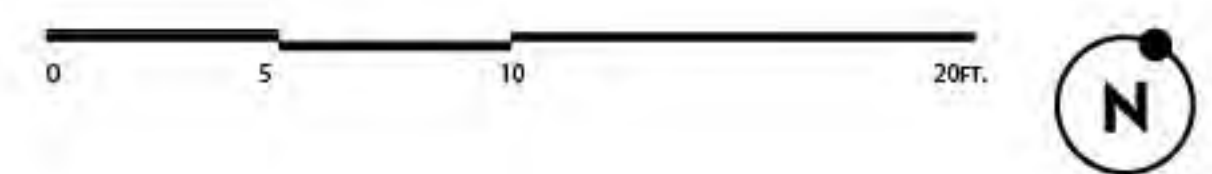
- OUTDOOR AND INDOOR SPACES
- ADMINISTRATION
- KITCHEN
- 14 PARKING SPACES

NO.	TYPE	NO. OF FLOOR	FLOOR	GROSS (SF)	TOTAL GROSS (SF)
1.	CHILD DAYCARE	1	GROUND FLOOR	4000	4000



LEGEND

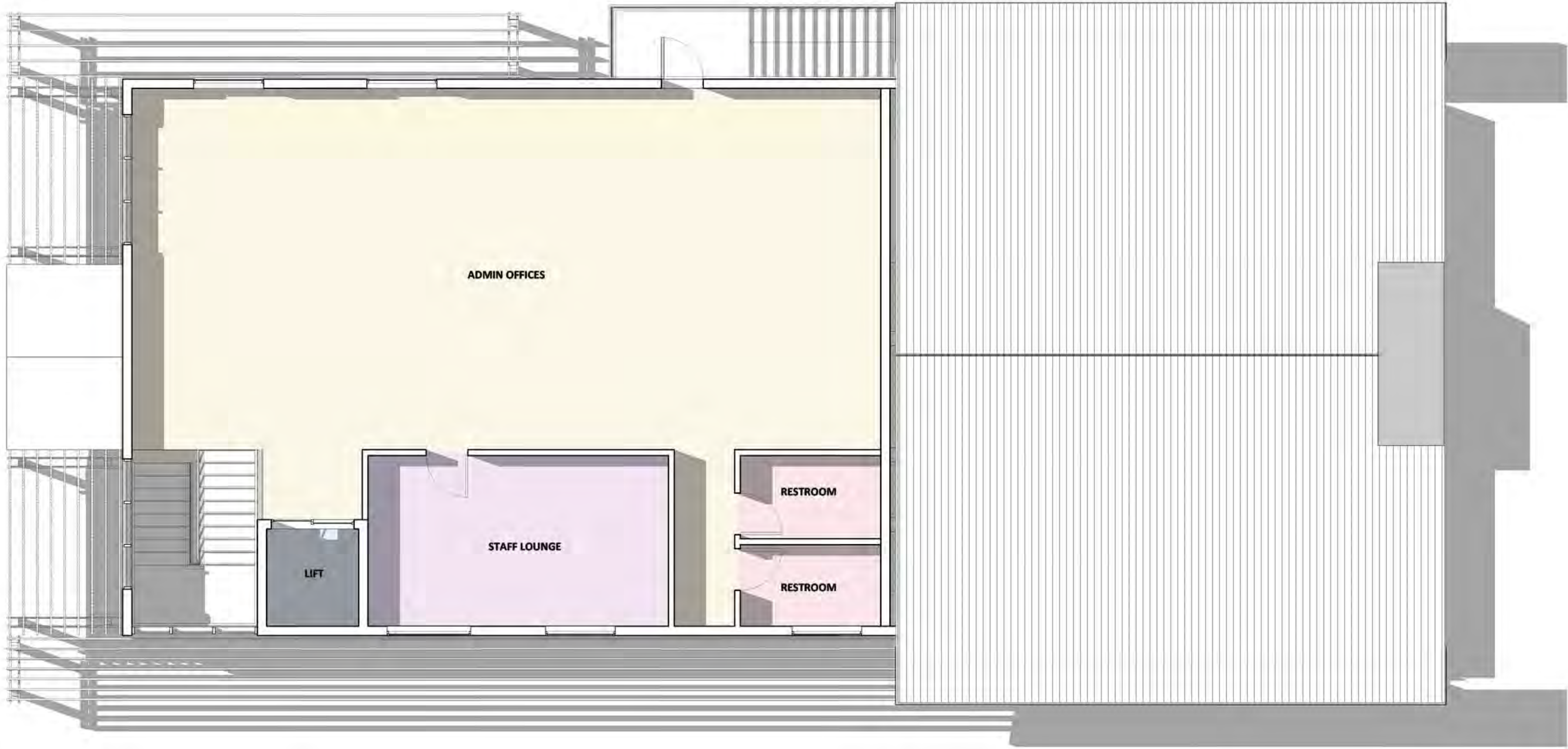
- SLEEPING ROOM
- ACTIVITY ROOM
- ADMIN
- KITCHEN
- CORRIDOR
- RESTROOM



ADULT DAYCARE

- OUTDOOR AND INDOOR SPACES
- ADMINISTRATION
- KITCHEN
- SLEEPING AREA
- 24 PARKING SPACES

NO.	TYPE	NO. OF FLOOR	FLOOR	GROSS (SF)	TOTAL GROSS (SF)
1.	ADULT DAYCARE	2	GROUND FLOOR	3600	5600
			SECOND FLOOR	2000	



LEGEND

- SLEEPING ROOM
- ACTIVITY ROOM
- ADMIN
- KITCHEN
- CORRIDOR
- RESTROOM



ADULT DAYCARE

- OUTDOOR AND INDOOR SPACES
- ADMINISTRATION
- KITCHEN
- SLEEPING AREA
- 24 PARKING SPACES

NO.	TYPE	NO. OF FLOOR	FLOOR	GROSS (SF)	TOTAL GROSS (SF)
1.V	ADULT DAYCARE	2	GROUND FLOOR	3600	5600
			SECOND FLOOR	2000	



LEGEND

- CLASSROOM
- STUDIO
- RESOURCE CENTER
- ADMIN
- STUDIO LOUNGE
- RESTROOM



VOCATIONAL TRAINING CENTER

- 4 STUDIOS
- 4 CLASSROOMS
- ADMIN
- RESOURCE CENTER
- RESTROOMS
- 78 PARKING SPACES

NO.	TYPE	NO. OF FLOOR	FLOOR	GROSS (SF)	TOTAL GROSS (SF)
1.	VOCATIONAL TRAINING CENTER	1	FIRST FLOOR	10000	10000



0 4 8 16ft.



WEST ELEVATION



NORTH ELEVATION





WEST ELEVATION



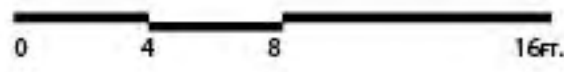
EAST ELEVATION

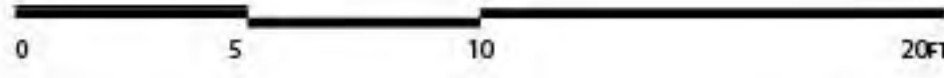


SOUTH ELEVATION



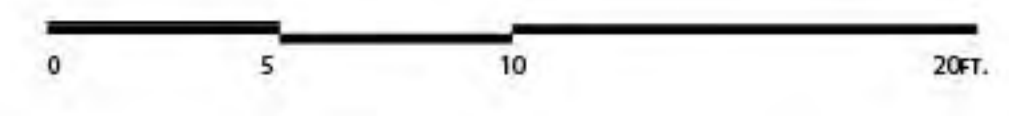
NORTH ELEVATION







SOUTH ELEVATION





EAST ELEVATION



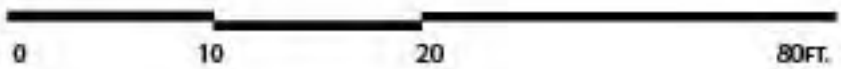
WEST ELEVATION

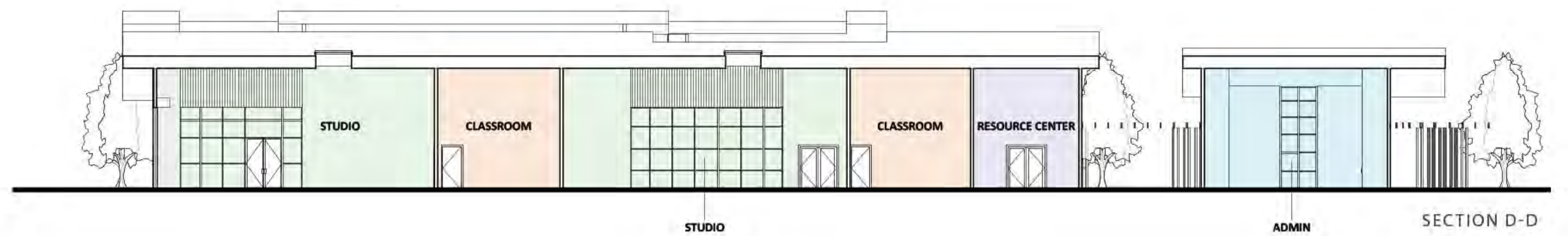
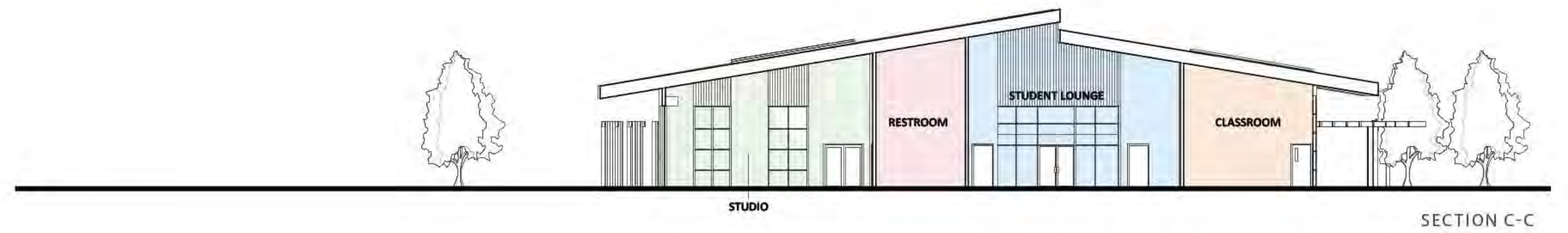
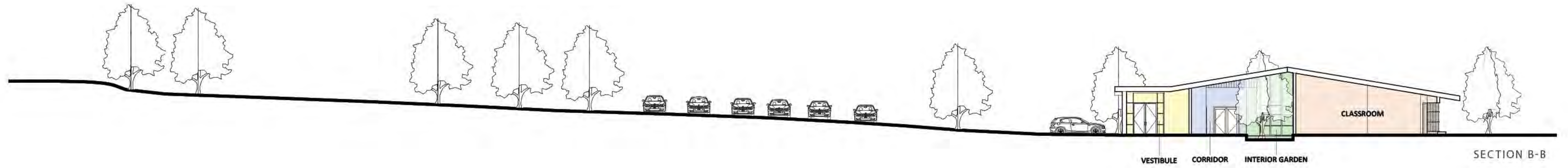
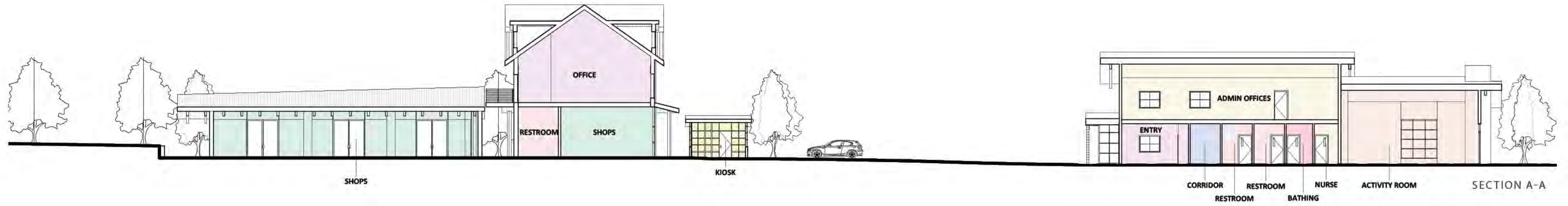


SOUTH ELEVATION



NORTH ELEVATION





0 10 20 80 FT



DEMOLITION LEGEND:

⊗ EX TREE TO BE REMOVED

PRELIM GRADING & DRAINAGE PLAN

20' 10' 0 10' 20' 40' 60'

Graphic Scale: 1" = 20'

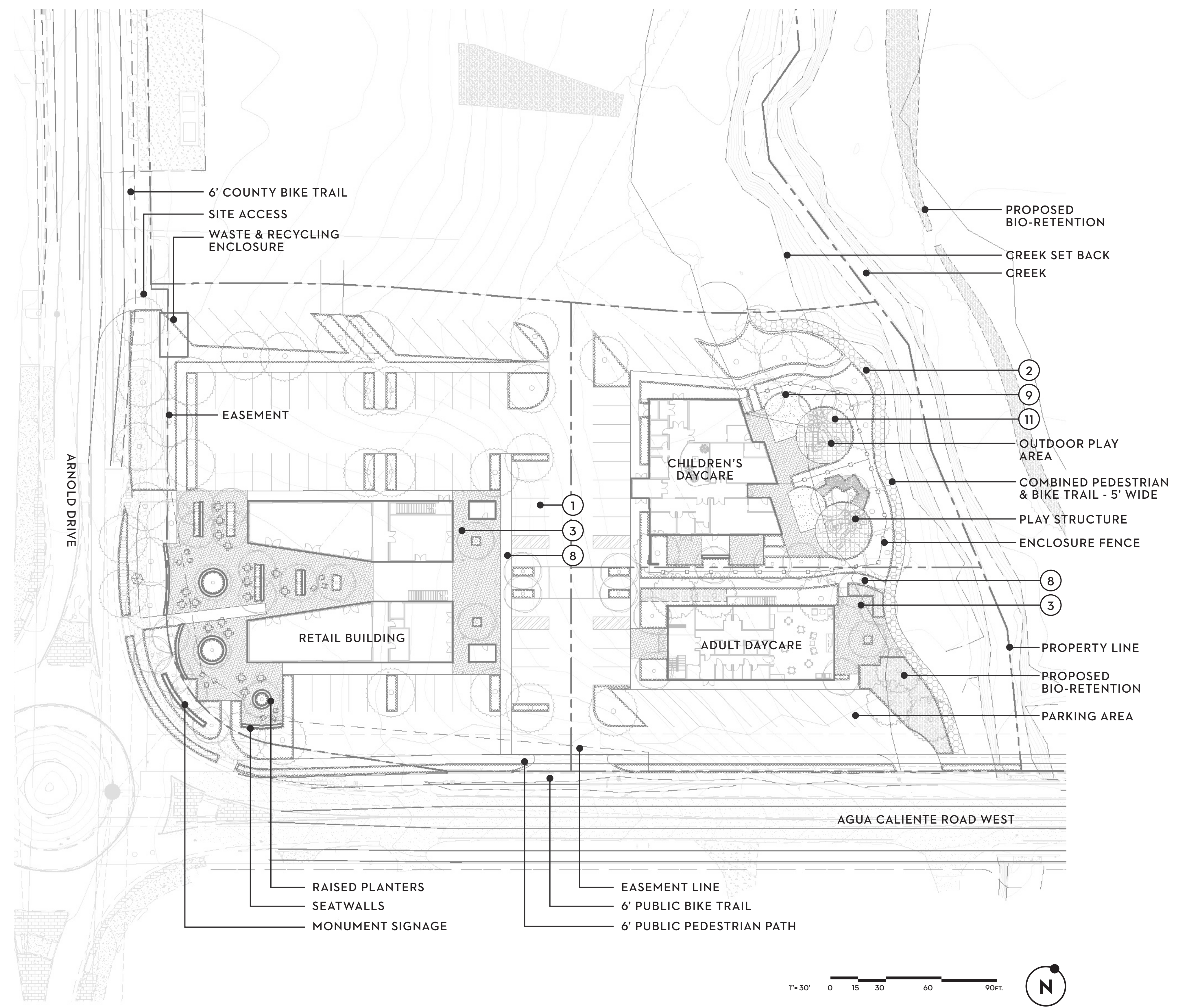
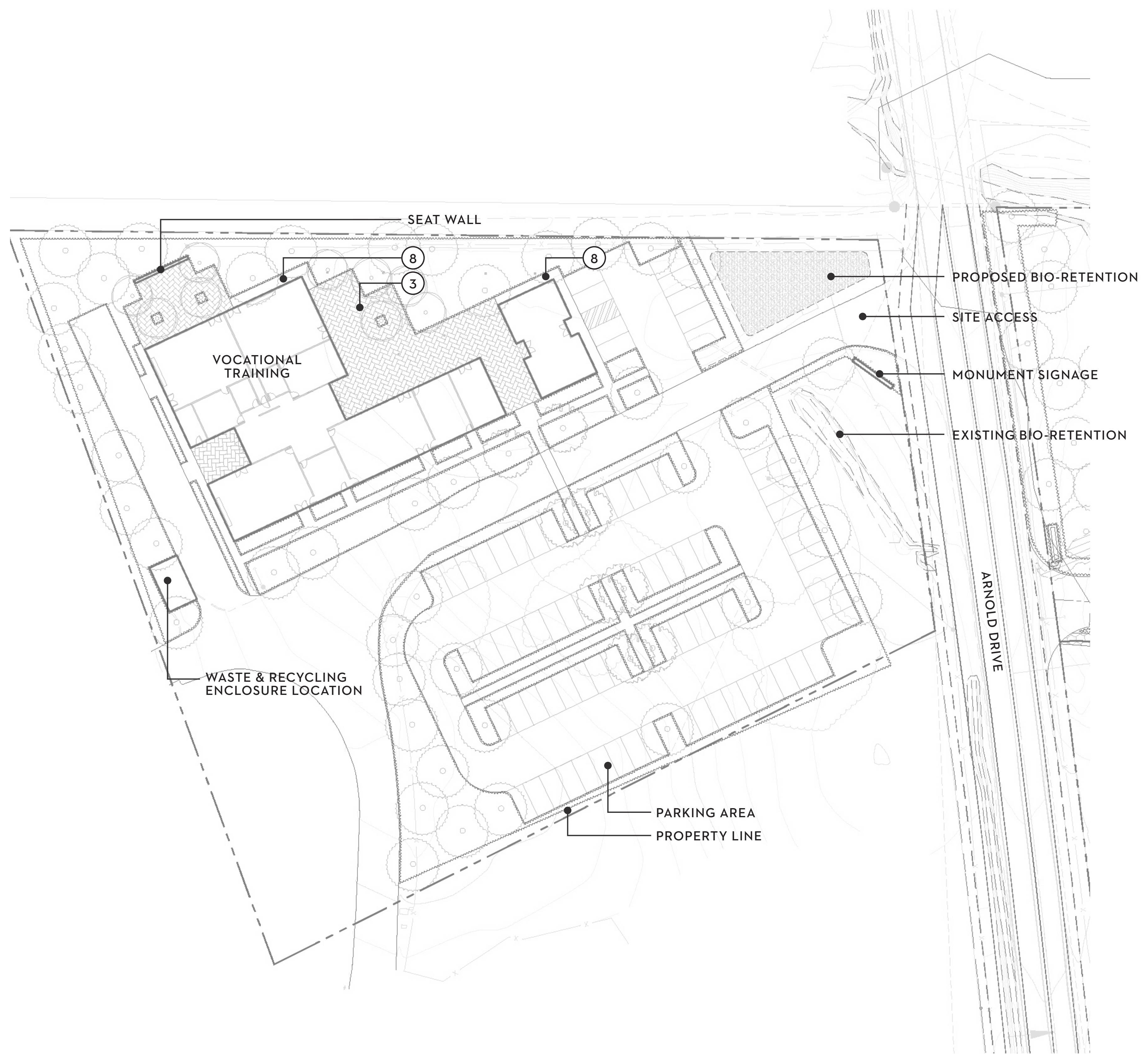
HATCHING LEGEND:

Green hatched area: BIO-RETENTION AREA

FILE: \\S:\0203\PROJECTS\3203\DWG\1030\1030-DESIGN\PRELIM GRADING & DRAINAGE PLAN\AGUA CALIENTE - VOCATIONAL TRAINING PRELIM GRADING & DRAINAGE PLAN\1030-1123-05 PRELIM GRADING.dwg

MATERIALS LEGEND

- ① ASPHALT PAVING
- ② PERMEABLE ASPHALT
- ③ SPECIAL PAVING
- ④ GRAVEL
- ⑤ BOARDWALK
- ⑥ DECK
- ⑦ GRASS PAVERS AT EVA ACCESS
- ⑧ CONCRETE PAVING
- ⑨ TURF GRASS
- ⑩ DECOMPOSED GRANITE
- ⑪ RUBBERIZED PAVING





COLORED CONCRETE



CONCRETE PAVERS



CONCRETE PAVERS



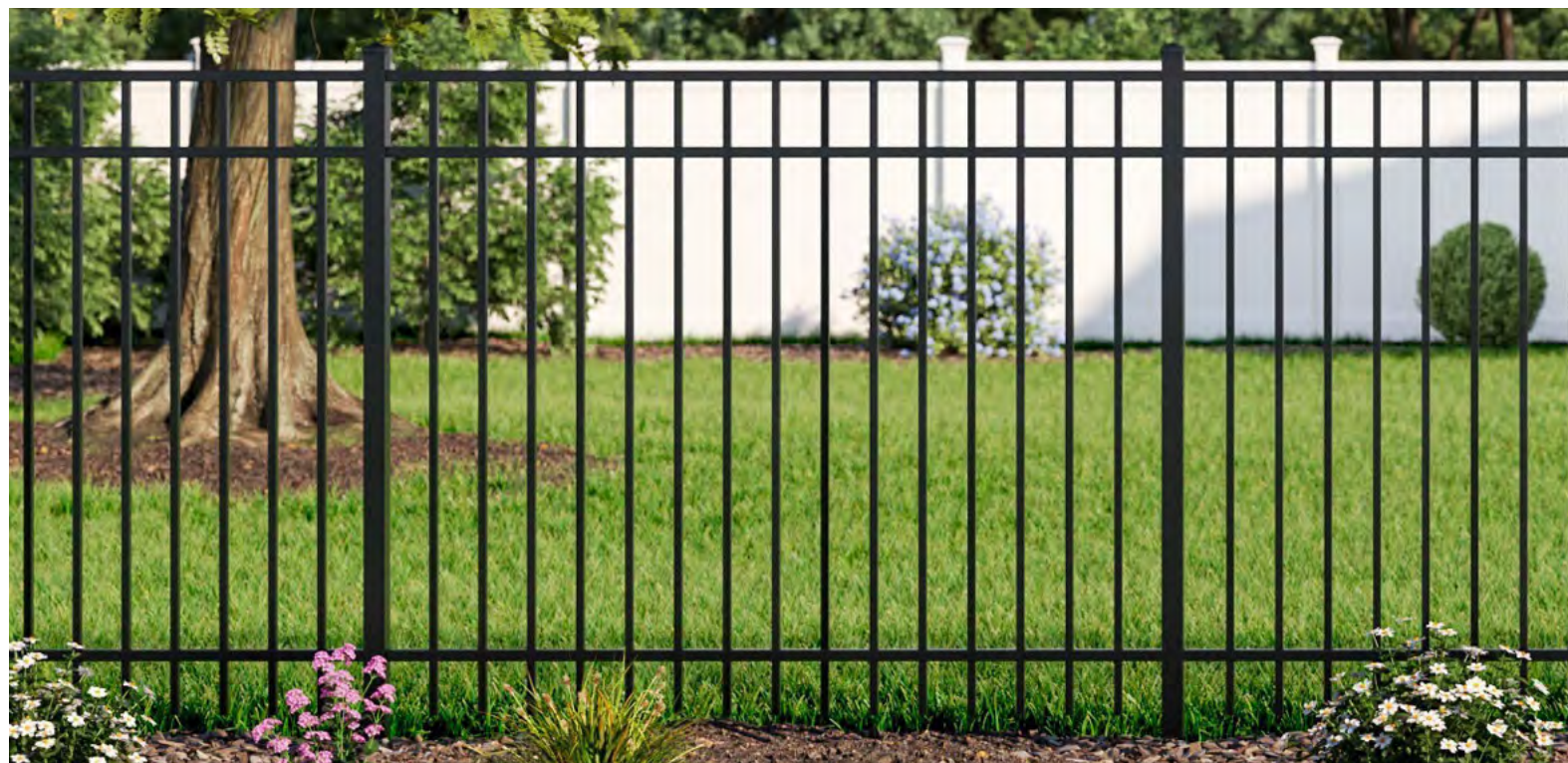
CONCRETE PAVERS



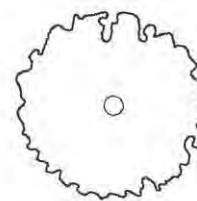
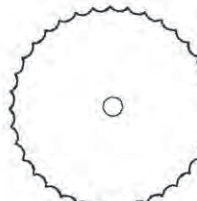
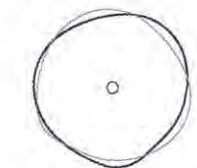
POROUS ASPHALT

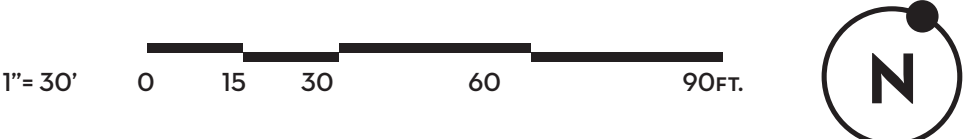
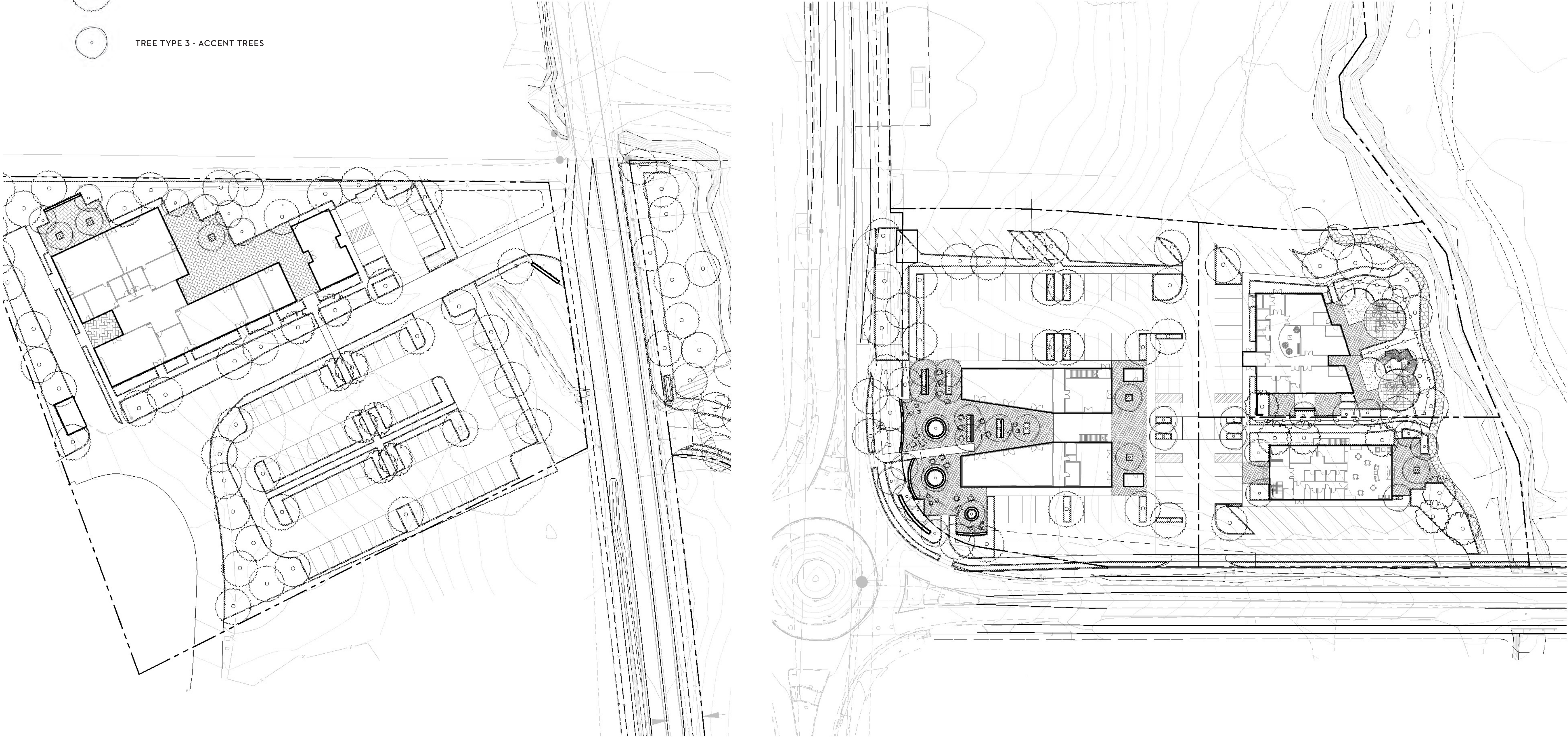


GRAVEL

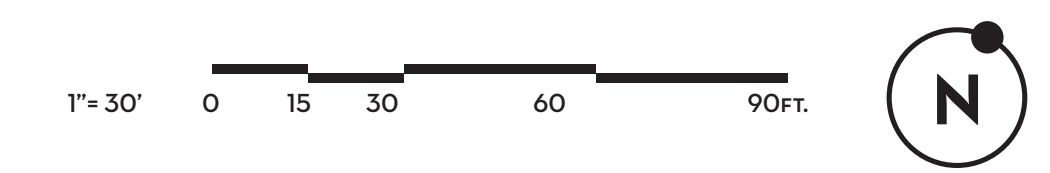
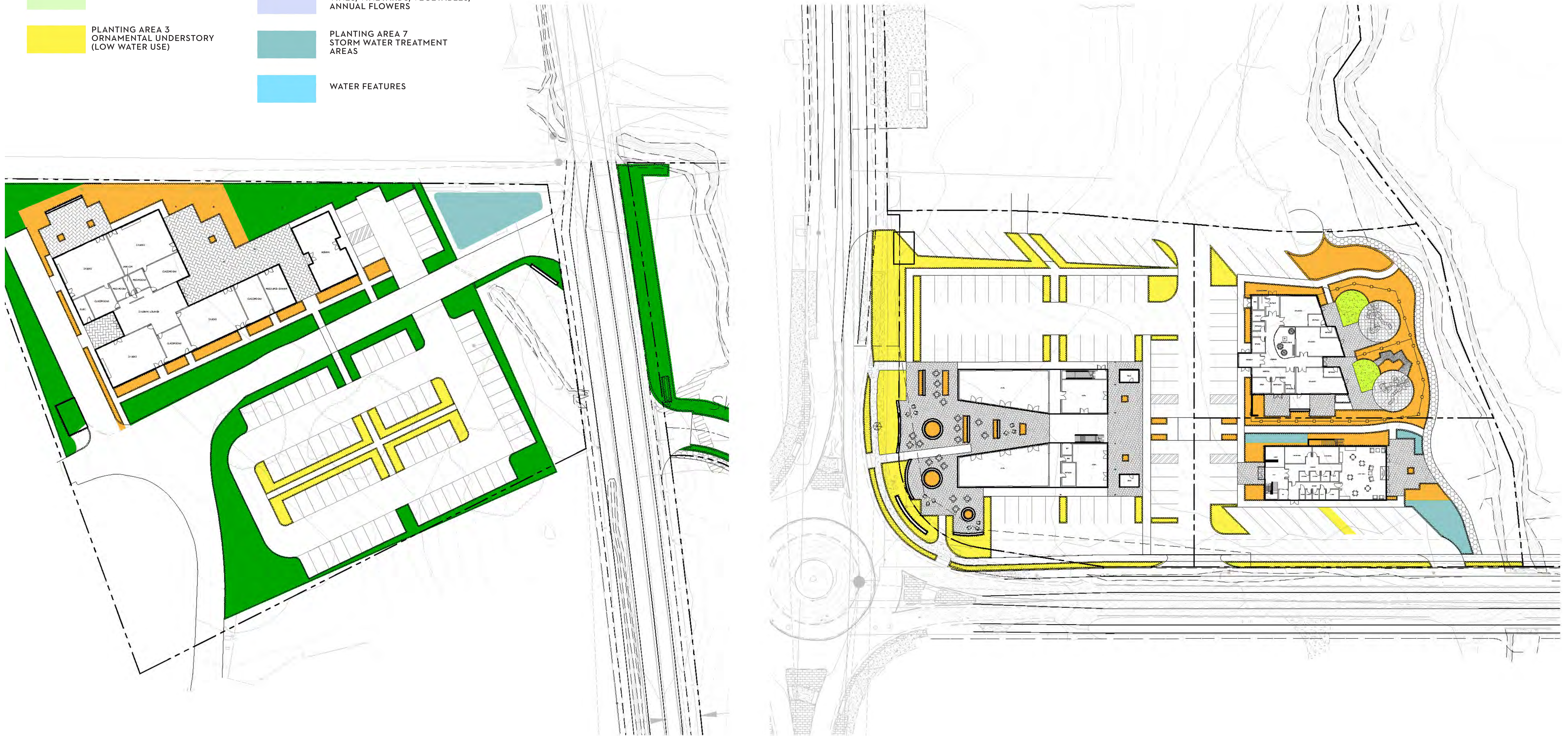


TYPICAL FENCE (5')

-  TREE TYPE 1 - CANOPY TREES
-  TREE TYPE 2 - OAKS AND BUFFER VEGETATION
-  TREE TYPE 3 - ACCENT TREES



- LAWN
- PLANTING AREA 1
NATURAL UNDERSTORY
- PLANTING AREA 2
MEADOW
- PLANTING AREA 3
ORNAMENTAL UNDERSTORY
(LOW WATER USE)
- PLANTING AREA 4
ORNAMENTAL UNDERSTORY
(MEDIUM WATER USE)
- PLANTING AREA 5
WETLAND EDGES
- PLANTING AREA 6
VINES/VINEYARDS/VEGETABLES/
ANNUAL FLOWERS
- PLANTING AREA 7
STORM WATER TREATMENT
AREAS
- WATER FEATURES



TREE TYPE 1 - CANOPY TREES				
SYMBOL	BOTANICAL NAME	COMMON NAME	NATIVE	WATER USE
	<i>Acer macrophyllum</i>	Big leaf maple	•	Moderate
	<i>Arbutus menziesii</i>	Pacific madrone	•	Low
	<i>Fraxinus latifolia</i>	Oregon ash	•	Moderate
	<i>Platanus racemosa</i>	Western sycamore	•	Moderate

TREE TYPE 2 - OAKS AND BUFFER VEGETATION				
SYMBOL	BOTANICAL NAME	COMMON NAME	NATIVE	WATER USE
	<i>Quercus agrifolia</i>	Coast live oak	•	Very Low
	<i>Quercus douglasii</i>	Blue oak tree	•	Very Low
	<i>Quercus lobata</i>	Valley oak	•	Low
	<i>Sequoia sempervirens</i>	Coast redwood	•	High

TREE TYPE 3 - ACCENT TREES				
SYMBOL	BOTANICAL NAME	COMMON NAME	NATIVE	WATER USE
	<i>Aesculus californica</i>	California buckeye	•	Very Low
	<i>Arbutus marina</i>	Strawberry tree	•	Low
	<i>Cercis occidentalis</i>	Western redbud	•	Very Low
	<i>Fremontodendron californicum</i>	California flannelbush	•	Low
	<i>Koelreuteria bipinnata</i>	Chinese flame tree		Moderate
	<i>Jacaranda mimosifolia</i>	Jacaranda		Moderate
	<i>Lagerstroemia indica</i>	Crapemyrtle		Low



Platanus racemosa



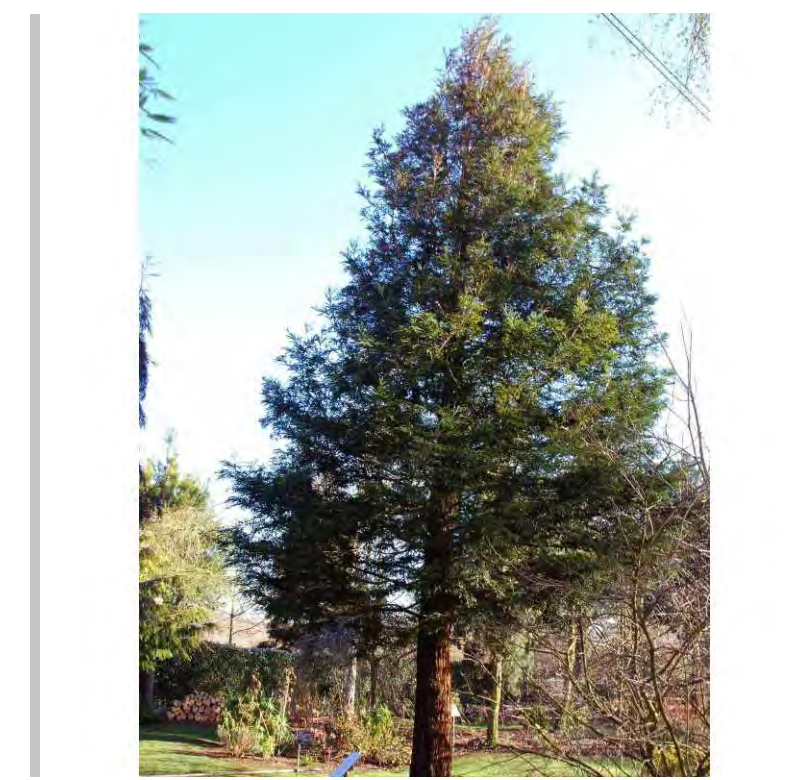
Fraxinus latifolia



Arbutus menziesii



Acer macrophyllum



Sequoia sempervirens



Quercus lobata



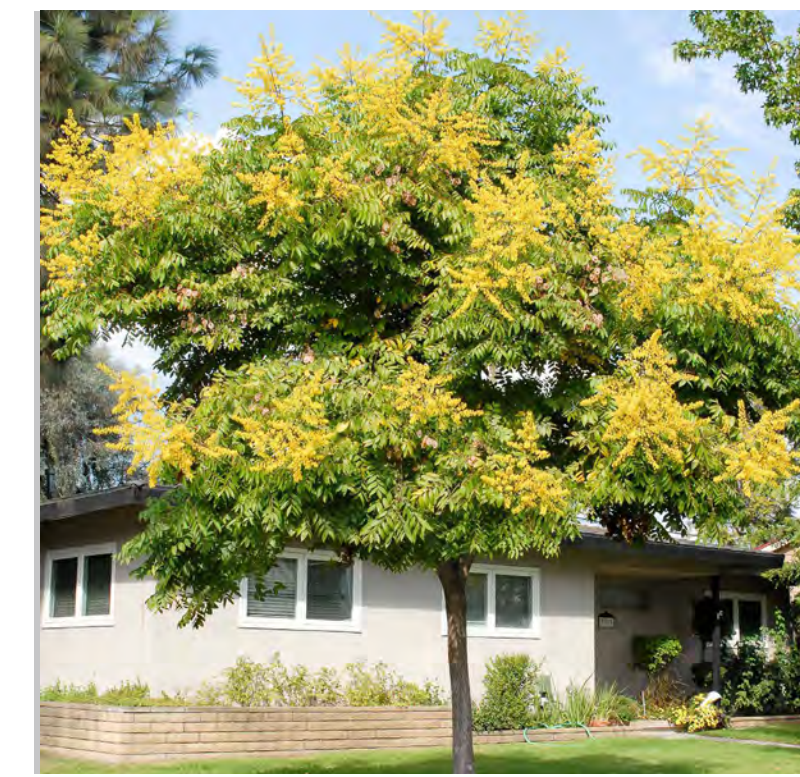
Quercus douglasii



Quercus agrifolia



Jacaranda mimosifolia



Koelreuteria bipinnata



Fremontodendron californicum



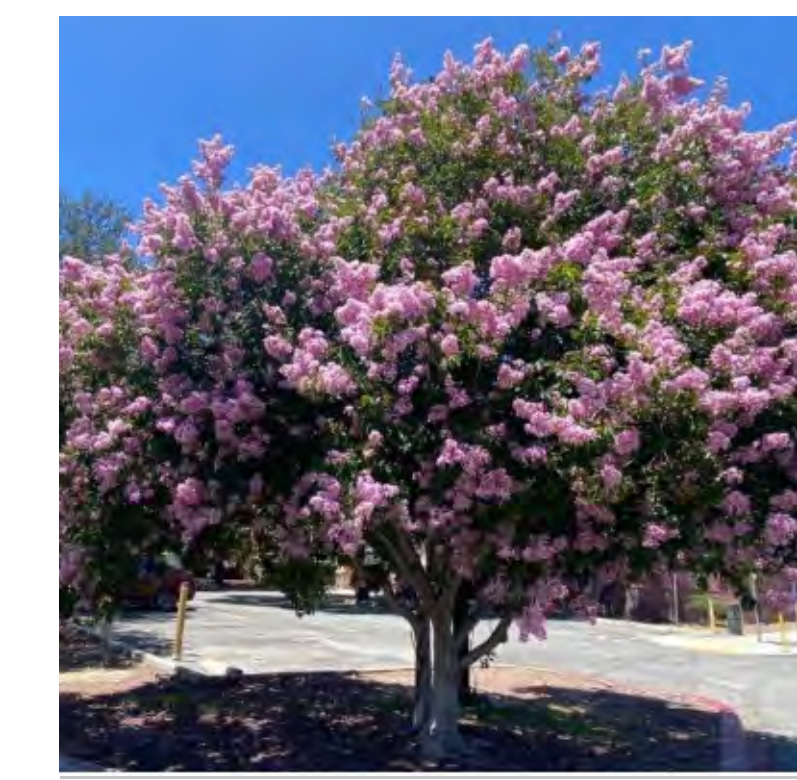
Cercis occidentalis



Arbutus marina



Aesculus californica



Lagerstroemia indica

PLANTING AREA 1 - NATURAL UNDERSTORY / BUFFER PLANTING - VERY LOW / LOW WATER USE				
SYMBOL	BOTANICAL NAME	COMMON NAME	NATIVE	WATER USE
	<i>Arctostaphylos species</i>	Manzanita	•	
	<i>Artemisia californica</i>	California sage bush	•	
	<i>Asclepias californica</i>	Milkweed	•	
	<i>Berberis nevinii</i>	Nevin's mahonia	•	
	<i>Ceanothus species</i>	California lilac	•	
	<i>Dendromecon rigida</i>	Tree poppy	•	
	<i>Eschscholzia californica</i>	California poppy	•	
	<i>Festuca idahoensis</i>	Idaho fescue	•	
	<i>Fremontodendron species</i>	Flannelbush	•	
	<i>Myrica californica</i>	Pacific Wax Myrtle	•	
	<i>Rhamnus ilicifolia</i>	Hollyleaf redberry	•	

PLANTING AREA 3 - ORNAMENTAL UNDERSTORY - LOW WATER USE				
SYMBOL	BOTANICAL NAME	COMMON NAME	NATIVE	WATER USE
	<i>Acacia redolens</i>	Prostrate acacia		
	<i>Berberis pinnata</i>	California holly grape	•	
	<i>Carex divulsa</i>	Berkeley sedge	•	
	<i>Cistus species</i>	Rockrose		
	<i>Dietes grandiflora</i>	Fortnight lily		
	<i>Lavandula species</i>	Lavandula species		
	<i>Lupinus albilfrons</i>	Silver lupine	•	
	<i>Rosmarinus species</i>	Rosemary species		
	<i>Rosa californica</i>	California rose	•	
	<i>Salvia species (native)</i>	Sage species	•	



Dendromecon rigida



Ceanothus species



Berberis nevinii



Asclepias californica



Artemisia californica



Arctostaphylos species



Rhamnus ilicifolia



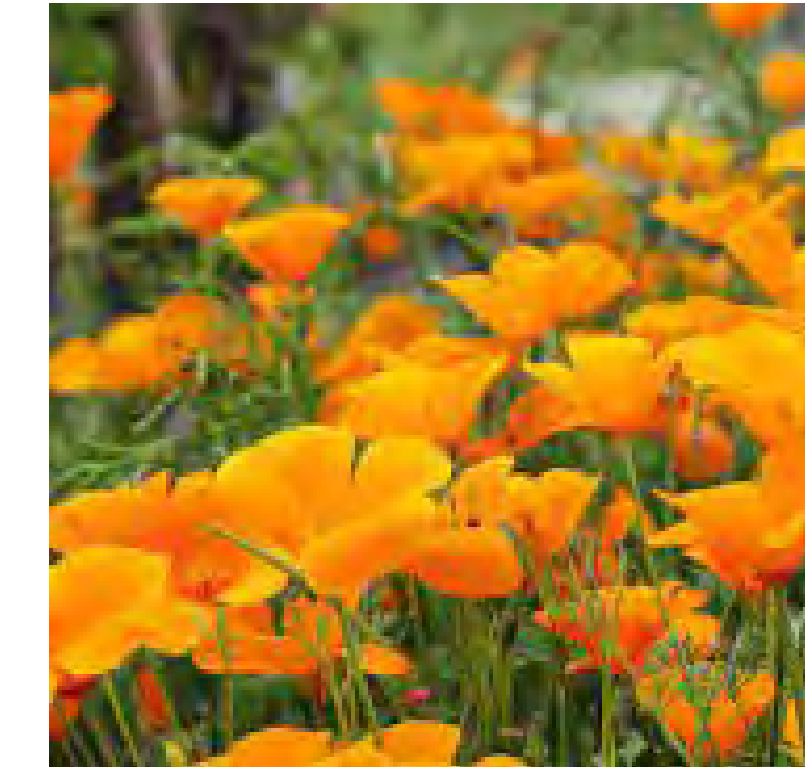
Myrica californica



Fremontodendron species



Festuca idahoensis



Eschscholzia californica



Lavandula species



Dietes grandiflora



Cistus species



Carex divulsa



Berberis pinnata



Acacia redolens



Salvia species



Rosa californica



Rosmarinus species



Lupinus albilfrons

PLANTING AREA 4 - ORNAMENTAL UNDERSTORY - MEDIUM WATER USE				
SYMBOL	BOTANICAL NAME	COMMON NAME	NATIVE	WATER USE
	<i>Buxus sempervirens</i>	Boxwood	•	
	<i>Camellia species</i>	Camellia	•	
	<i>Carpenteria californica</i>	Anemone bush	•	
	<i>Erigeron species</i>	Fleabane species	•	
	<i>Lonicera nitida</i>	Box honeysuckle	•	
	<i>Muhlenbergia capillaris</i>	Hairy awn muhly		
	<i>Pelargonium species</i>	Geranium	•	
	<i>Philadelphus lewisii</i>	Wild mock orange	•	
	<i>Salvia species (non native)</i>	Sage species		



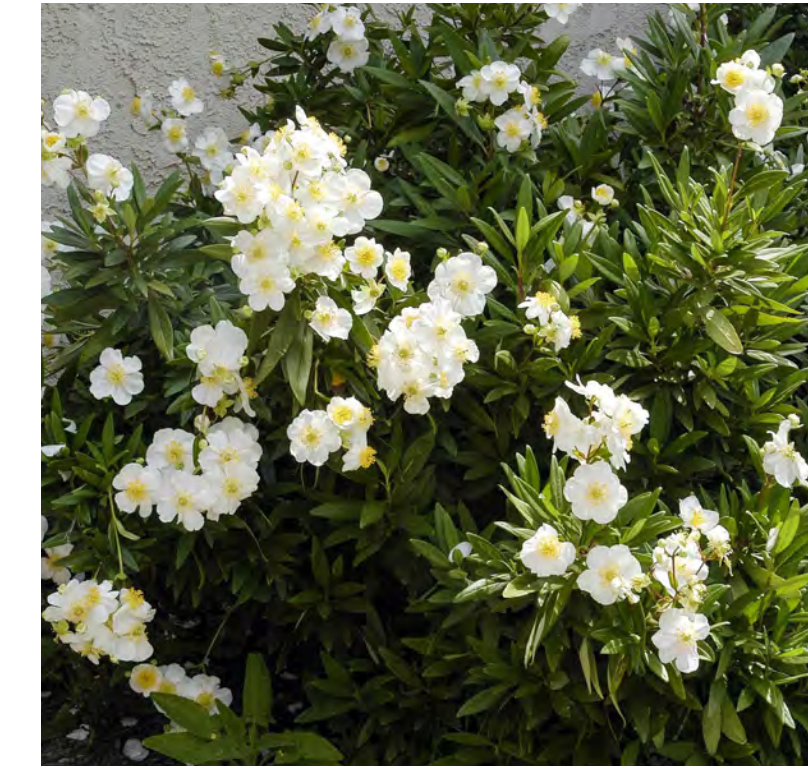
Muhlenbergia capillaris



Lonicera nitida



Erigeron species



Carpenteria californica



Camellia species



Buxus sempervirens

PLANTING AREA 6 - VINES				
SYMBOL	BOTANICAL NAME	COMMON NAME	NATIVE	WATER USE
	<i>Actinidia deliciosa</i>	Kiwi vine		High
	<i>Distictis buccinatoria</i>	Blood red trumpet vine		Moderate
	<i>Jasminum polyanthum</i>	Pink jasmine		Moderate
	<i>Passiflora edulis</i>	Passion fruit vine		Moderate
	<i>Vitis vinifera species</i>	Grape vines		Moderate



Salvia species (non native)



Philadelphus lewisii



Pelargonium species

PLANTING AREA 7 - STORMWATER TREATMENT AREAS				
SYMBOL	BOTANICAL NAME	COMMON NAME	NATIVE	WATER USE
	<i>Aristida purpurea</i>	Purple three awn		Low
	<i>Arctostaphylos densiflora 'McMinn'</i>	McMinn Manzanita	•	Low
	<i>Deschampsia cespitosa</i>	Tufted hairgrass	•	Low
	<i>Elymus glaucus</i>	Blue wildrye	•	Low
	<i>Heteromeles arbutifolia</i>	Toyon	•	Low
	<i>Rosa californica</i>	California rose	•	Low



Vitis vinifera



Passiflora edulis



Jasminum polyanthum



Distictis buccinatoria



Actinidia deliciosa



Rosa californica



Heteromeles arbutifolia



Elymus glaucus



Deschampsia cespitosa

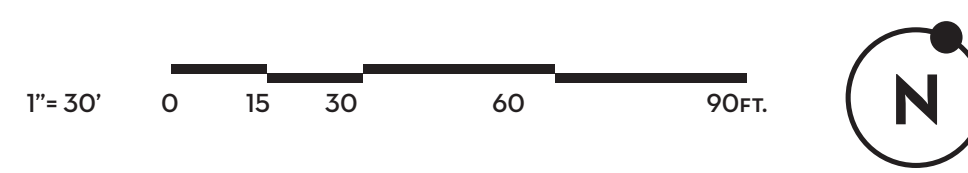


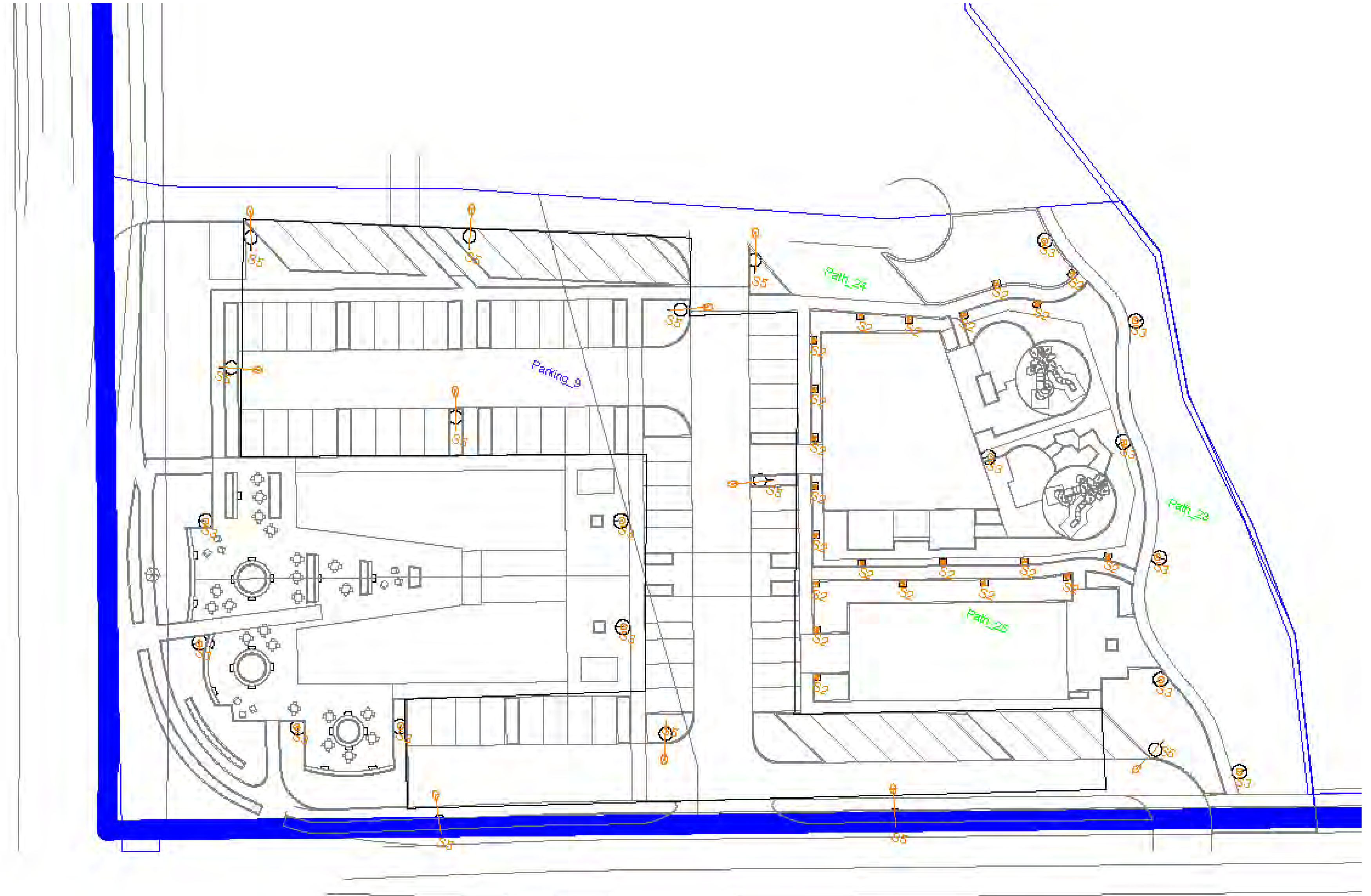
Arctostaphylos densiflora 'McMinn'



Aristida purpurea

- POLE LIGHT/VEHICULAR - 25' HIGH
100' O.C.
- ⊙ POLE LIGHT/PEDESTRIAN - 16' HIGH
50' O.C.
- BOLLARDS - 20' O.C.
- ▮ WALL LIGHTS

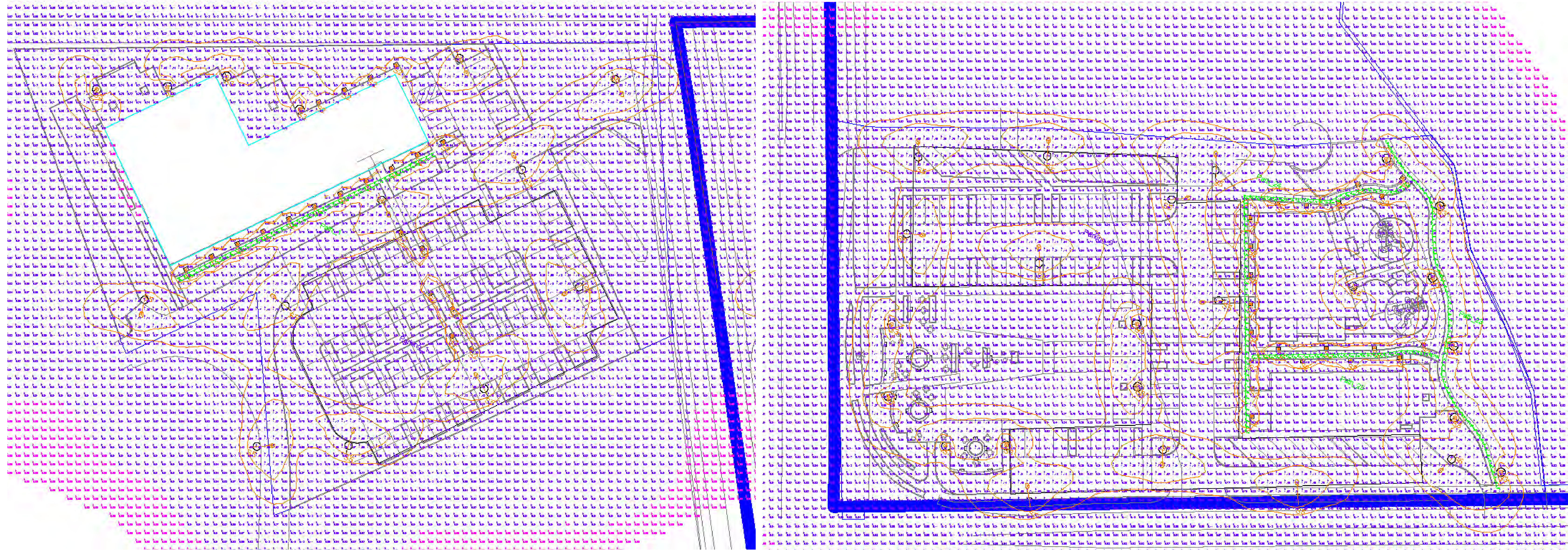




LIGHTING LAYOUT

Luminaire Schedule													
Symbol	Qty	Tag	Arrangement	Luminaire Lumens	LLF	LLD	LDD	Description	Mounting Height	Arm	Luminaire Watts	Data Source Filename	
	326	S2	Single	1474	0.850	0.944	0.900	BEGA 84220-K4 1475 Lumens	2.96	0	15	84220K4_BEGA_IES.ies	
	124	S3	Single	3134	0.850	0.944	0.900	BEGA 77165-K4 3134 Lumens	18.479	0	36	77165.ies	
	96	S5	Single	4974	0.850	0.944	0.900	BEGA 77950-K4 4974 Lumens	25	5.2917	57	77950_BEGA_IES.ies	

Calculation Summary									
Label	CalcType	Grid Z	Units	Avg	Max	Min	AvgMin	Max/Min	# Pts
Path_1	Illuminance	0	Fc	7.45	19.55	1.33	5.60	14.70	50
Path_10	Illuminance	0	Fc	5.73	19.31	0.14	40.93	137.93	57
Path_11	Illuminance	0	Fc	1.26	2.42	0.44	2.86	5.50	512
Path_12	Illuminance	0	Fc	3.93	12.16	0.53	7.42	22.94	68
Path_13	Illuminance	0	Fc	4.79	15.60	0.08	59.88	195.00	45
Path_14	Illuminance	0	Fc	2.97	19.18	0.51	5.82	37.61	103
Path_15	Illuminance	0	Fc	4.41	13.52	0.02	220.50	676.00	36
Path_16	Illuminance	0	Fc	4.83	11.63	0.51	9.47	22.80	40
Path_17	Illuminance	0	Fc	6.20	21.57	1.86	3.33	11.60	42
Path_18	Illuminance	0	Fc	5.49	16.23	0.19	28.89	95.42	123
Path_19	Illuminance	0	Fc	2.13	13.33	0.37	5.76	36.03	67
Path_2	Illuminance	0	Fc	5.30	10.93	1.27	4.17	8.61	34
Path_20	Illuminance	0	Fc	1.12	1.77	0.67	1.67	2.64	29
Path_21	Illuminance	0	Fc	6.40	19.23	0.24	26.67	80.13	39
Path_22	Illuminance	0	Fc	2.08	7.08	0.32	6.50	22.13	36
Path_23	Illuminance	0	Fc	1.45	9.43	0.55	2.64	17.15	67
Path_24	Illuminance	0	Fc	4.80	16.26	0.24	20.00	67.75	71
Path_25	Illuminance	0	Fc	4.58	11.01	0.21	21.81	52.43	33
Path_3	Illuminance	0	Fc	4.15	10.77	0.39	10.64	27.82	19
Path_4	Illuminance	0	Fc	3.76	10.11	1.23	3.06	8.22	57
Path_5	Illuminance	0	Fc	6.93	13.89	3.44	2.01	4.04	22
Path_6	Illuminance	0	Fc	2.14	5.12	0.04	63.50	128.00	35
Path_7	Illuminance	0	Fc	1.58	2.09	1.05	1.50	1.98	74
Path_8	Illuminance	0	Fc	7.79	14.97	3.57	2.18	4.19	19
Path_9	Illuminance	0	Fc	4.91	10.99	1.05	4.68	10.47	25
Parking_1	Illuminance	0	Fc	0.67	47.58	0.01	67.00	4758	724
Parking_2	Illuminance	0	Fc	0.59	1.93	0.05	11.80	38.60	362
Parking_3	Illuminance	0	Fc	0.62	1.74	0.18	3.44	9.67	240
Parking_4	Illuminance	0	Fc	0.91	2.05	0.09	10.11	22.78	453
Parking_5	Illuminance	0	Fc	0.81	1.99	0.09	9.00	22.11	150
Parking_6	Illuminance	0	Fc	0.87	1.99	0.14	6.21	14.21	269
Parking_7	Illuminance	0	Fc	0.70	1.85	0.28	2.50	6.61	202
Parking_8	Illuminance	0	Fc	0.67	1.89	0.19	3.53	9.95	216
Parking_9	Illuminance	0	Fc	0.68	2.06	0.05	13.80	41.20	1045
Roadway_1	Illuminance	0	Fc	0.80	1.89	0.15	5.33	12.60	238
Roadway_2	Illuminance	0	Fc	1.06	1.95	0.22	4.82	8.86	314
Roadway_3	Illuminance	0	Fc	1.02	1.92	0.48	2.13	4.00	146
Roadway_4	Illuminance	0	Fc	0.99	1.87	0.34	2.91	5.50	132
Roadway_5	Illuminance	0	Fc	0.98	1.86	0.22	4.45	8.86	682
Roadway_6	Illuminance	0	Fc	0.97	1.85	0.17	5.71	11.47	275
Roadway_7	Illuminance	0	Fc	0.90	1.82	0.24	3.75	7.58	259
Roadway_8	Illuminance	0	Fc	1.24	2.99	0.28	4.43	10.68	423



LIGHTING LAYOUT - WITH METER READINGS

Luminaire Schedule													
Symbol	Qty	Tag	Arrangement	Luminaire Lumens	LLF	LLD	LDD	Description	Mounting Height	Arm	Luminaire Watts	Data Source Filename	
	326	S2	Single	1474	0.850	0.944	0.900	BEGA 84220-K4 1475 Lumens	2.96	0	15	84220K4_BEGA_IES.ies	
	124	S3	Single	3134	0.850	0.944	0.900	BEGA 77165-K4 3134 Lumens	18.479	0	36	77165.ies	
	96	S5	Single	4974	0.850	0.944	0.900	BEGA 77950-K4 4974 Lumens	25	5.2917	57	77950_BEGA_IES.ies	

Calculation Summary									
Label	CalcType	Grid Z	Units	Avg	Max	Min	Avg/Min	Max/Min	# Pts
Path_1	Illuminance	0	Fc	7.45	19.55	1.33	5.60	14.70	50
Path_10	Illuminance	0	Fc	5.73	19.31	0.14	40.93	137.93	57
Path_11	Illuminance	0	Fc	1.26	2.42	0.44	2.86	5.50	512
Path_12	Illuminance	0	Fc	3.93	12.18	0.53	7.42	22.94	68
Path_13	Illuminance	0	Fc	4.79	15.60	0.08	59.88	195.00	45
Path_14	Illuminance	0	Fc	2.97	19.18	0.51	5.82	37.61	103
Path_15	Illuminance	0	Fc	4.41	13.52	0.02	220.50	676.00	36
Path_16	Illuminance	0	Fc	4.83	11.63	0.51	9.47	22.80	40
Path_17	Illuminance	0	Fc	6.20	21.57	1.86	3.33	11.60	42
Path_18	Illuminance	0	Fc	5.49	16.23	0.19	28.89	95.42	123
Path_19	Illuminance	0	Fc	2.13	13.33	0.37	5.76	36.03	67
Path_2	Illuminance	0	Fc	5.30	10.93	1.27	4.17	8.61	34
Path_20	Illuminance	0	Fc	1.12	1.77	0.67	1.67	2.64	29
Path_21	Illuminance	0	Fc	6.40	19.23	0.24	26.67	80.13	39
Path_22	Illuminance	0	Fc	2.08	7.08	0.32	6.50	22.13	36
Path_23	Illuminance	0	Fc	1.45	9.43	0.55	2.84	17.15	67
Path_24	Illuminance	0	Fc	4.80	16.26	0.24	20.00	67.75	71
Path_25	Illuminance	0	Fc	4.58	11.01	0.21	21.81	52.43	33
Path_3	Illuminance	0	Fc	4.15	10.77	0.39	10.64	27.62	19
Path_4	Illuminance	0	Fc	3.78	10.11	1.23	3.06	8.22	57
Path_5	Illuminance	0	Fc	6.93	13.89	3.44	2.01	4.04	22
Path_6	Illuminance	0	Fc	2.14	5.12	0.04	63.50	128.00	35
Path_7	Illuminance	0	Fc	1.58	2.09	1.05	1.50	1.98	74
Path_8	Illuminance	0	Fc	7.79	14.97	3.57	2.18	4.19	19
Path_9	Illuminance	0	Fc	4.91	10.99	1.05	4.68	10.47	25
Parking_1	Illuminance	0	Fc	0.67	47.58	0.01	67.00	4758	724
Parking_2	Illuminance	0	Fc	0.59	1.93	0.05	11.80	38.60	362
Parking_3	Illuminance	0	Fc	0.62	1.74	0.18	3.44	9.67	240
Parking_4	Illuminance	0	Fc	0.91	2.05	0.09	10.11	22.78	453
Parking_5	Illuminance	0	Fc	0.81	1.99	0.09	9.00	22.11	150
Parking_6	Illuminance	0	Fc	0.67	1.99	0.14	6.21	14.21	269
Parking_7	Illuminance	0	Fc	0.70	1.85	0.28	2.50	6.61	202
Parking_8	Illuminance	0	Fc	0.67	1.89	0.19	3.53	9.95	216
Parking_9	Illuminance	0	Fc	0.68	2.06	0.05	13.80	41.20	1045
Roadway_1	Illuminance	0	Fc	0.80	1.89	0.15	5.33	12.60	238
Roadway_2	Illuminance	0	Fc	1.08	1.85	0.22	4.82	8.86	314
Roadway_3	Illuminance	0	Fc	1.02	1.92	0.48	2.13	4.00	146
Roadway_4	Illuminance	0	Fc	0.98	1.87	0.34	2.91	5.50	132
Roadway_5	Illuminance	0	Fc	0.98	1.85	0.22	4.45	8.86	682
Roadway_6	Illuminance	0	Fc	0.87	1.85	0.17	5.71	11.47	275
Roadway_7	Illuminance	0	Fc	0.90	1.82	0.24	3.75	7.58	259
Roadway_8	Illuminance	0	Fc	1.24	2.99	0.28	4.43	10.68	423

LED wall luminaires - directed BEGA

Application
LED wall mounted luminaires with directed light designed to be mounted at various heights for general purpose illumination or glare free illumination when below eye level.

Materials
Luminaire housing constructed of die-cast marine grade, copper free (5.03% copper content) A360.0 aluminum alloy.
Non-safety glass.
Silicone applied robotically to casing, plasma treated for corrosion resistance.
Light temperature silicone cover.
Mechanically captive stainless steel fasteners.
NRTL listed to North American Standards, suitable for wet locations. Mount on class II/ES.

Weight: 3.1 lbs

Electrical
Operating voltage: 120-277VAC
Minimum start temperature: 40°C
LED module wattage: 6.1 W
System wattage: 6.9 W
Control: 0-10V, TRIAC, and 0-1V dimmable
Color rendering index: Ra=90
Luminaire lumens: 504 lumens (3000K)
Life span at L70: >50,000 h (L70)
Lifetime at L70: 322,000 h (L70)

LED color temperature
14000K - Product number - **K4**
15000K - Product number - **K35**
15000K - Product number - **K3**
17700K - Product number - **K27**

BEGA can supply you with suitable LED replacement modules for up to 25 years after the purchase of LED luminaires - see website for details.

Finish
All LED USA standard finishes are matte, textured polyester powder coat with minimum 3 mil thickness.
Available colors: T Black (BK), F White (WT), F RA1, U Ultra (UL), F Silver (SLV), F CLR.



LED wall luminaires - directed

Part No.	W	H	D	Weight
24372	6.1 W	7.1 H	4.1 D	3.1 lbs

BEGA 1000 BEGA Way, Carpinteria, CA 93013 (805)664-0533 info@bega-usa.com
Due to the dynamic nature of lighting products, we are committed to providing you with the most current technical information. Please refer to the website for the most current technical information. (Updated 01/15/2023)

Shielded bollard - asymmetric wide beam BEGA

Application
The fully shielded design of this bollard provides visual comfort while illuminating ground surfaces. Provided with mounting system that allows the luminaire to be adjusted independent of anchor bolt orientation.

Materials
Luminaire housing constructed of die-cast marine grade, copper free (5.03% copper content) A360.0 aluminum alloy.
Clear safety glass.
Reflector: made of pure anodized aluminum.
Silicone applied robotically to casing, plasma treated for corrosion resistance.
NRTL listed to North American Standards, suitable for wet locations. Protection class IP65.

Weight: 2.6 lbs

Electrical
Operating voltage: 120-277VAC
Minimum start temperature: 30°C
LED module wattage: 11.5 W
System wattage: 13.0 W
Control: 0-10V, TRIAC, and 0-1V dimmable
Color rendering index: Ra=90
Luminaire lumens: 1475 lumens (3000K)
LED service life: L70: 50,000 hours

LED color temperature
4000K - Product number - **K4**
5000K - Product number - **K35**
5000K - Product number - **K3**
5700K - Product number - **K27**

BEGA can supply you with suitable LED replacement modules for up to 25 years after the purchase of LED luminaires - see website for details.

Finish
All LED USA standard finishes are matte, textured polyester powder coat with minimum 3 mil thickness. All LED USA standard finishes are polyester powder coat with minimum 3 mil thickness. Available in four standard BEGA colors: Black (BK), White (WT), Bronze (BRZ), Silver (SLV). To specify, add appropriate suffix to casting number. Custom colors available upon request.

Available colors: Black (BK), White (WT), BRZ, Bronze (BRZ), Silver (SLV), CLR.

Available options
7055 Direct (unif. anchorage)



Shielded bollard - asymmetric wide beam

Part No.	W	H	D	Weight
84220	11.5 W	19.1 H	3.2 D	2.6 lbs
77165	11.5 W	19.1 H	3.2 D	2.6 lbs

BEGA 1000 BEGA Way, Carpinteria, CA 93013 (805)664-0533 info@bega-usa.com
Due to the dynamic nature of lighting products, we are committed to providing you with the most current technical information. Please refer to the website for the most current technical information. (Updated 01/15/2023)

Pole top luminaires with asymmetric flat beam light distribution

Housing/finish: Two piece die cast aluminum construction. The fixture is 3" x 3" x 3" pole top or flush and is secured by six (6) socket head sets screws. The casting is anodized to clear. Small marks, the casting is anodized to clear. The casting is anodized to clear. The casting is anodized to clear. The casting is anodized to clear.

Enclosure: Clear acrylic diffuser with optical texture and reflector inside. Pure anodized aluminum housing. Fully gasketed for weather tight operation using a moisture resistant rubber O-ring gasket.

Electrical: 31-0W LED luminaire, 30-0 LED system wattage, 30°C start temperature. Integral 120V through 277V electronic LED driver. 0-10V dimming. LED modules are available from factory for every application. Standard LED color temperature is 4000K with 5,000 CRI. Available in 3,000K, 5,000K, and 5,700K color temperatures.

Note: LEDs supplied with luminaire. Due to the dynamic nature of LED technology, LED luminaire data on this sheet is subject to change at the discretion of BEGA-US. For the most current technical data, please refer to www.bega-usa.com.

Finish: All BEGA standard finishes are polyester powder coat with minimum 3 mil thickness. Available in four standard BEGA colors: Black (BK), White (WT), Bronze (BRZ), Silver (SLV). To specify, add appropriate suffix to casting number. Custom colors available upon request.

CSA certified to U.S. and Canadian standards, suitable for wet locations. Protection class IP65.

EPA (Effective projection area): 1.1 sq. ft.

Luminaire Lumens: 3154



Single pole top luminaire with asymmetric flat beam light distribution

Part No.	W	H	D	Weight
77165	31.0 W (E)	19.1 H	3.2 D	2.6 lbs

BEGA 1000 BEGA Way, Carpinteria, CA 93013 (805)664-0533 FAX (805)566-0474 www.bega-usa.com
Copyright © BEGA US 2019. Updated 01/15/2023

LED pole-top luminaire with asymmetrical wide spread light distribution and outrigger arm

Housing/finish: Two piece die cast aluminum construction. The fixture is 3" x 3" x 3" pole top or flush and is secured by six (6) socket head sets screws. The casting is anodized to clear. Small marks, the casting is anodized to clear. The casting is anodized to clear. The casting is anodized to clear.

Enclosure: Clear acrylic diffuser with optical texture and reflector inside. Pure anodized aluminum housing. Fully gasketed for weather tight operation using a moisture resistant rubber O-ring gasket.

Electrical: 50-0W LED luminaire, 50-0 LED system wattage, 30°C start temperature. Integral 120V through 277V electronic LED driver. 0-10V dimming. Integral surge protection to protect the luminaire against surges rated up to 10kV. LED modules are available from factory for every application. Standard LED color temperature is 4000K with 5,000 CRI. Available in 3,000K, 5,000K, and 5,700K color temperatures.

Note: LEDs supplied with luminaire. Due to the dynamic nature of LED technology, LED luminaire data on this sheet is subject to change at the discretion of BEGA-US. For the most current technical data, please refer to www.bega-usa.com.

Finish: All BEGA standard finishes are polyester powder coat with minimum 3 mil thickness. Available in four standard BEGA colors: Black (BK), White (WT), Bronze (BRZ), Silver (SLV). To specify, add appropriate suffix to casting number. Custom colors available upon request.

CSA certified to U.S. and Canadian standards, suitable for wet locations. Protection class IP65.

EPA (Effective projection area): 1.2 sq. ft.

Luminaire Lumens: 6974



Single pole top luminaire with asymmetrical wide spread light distribution and outrigger arm

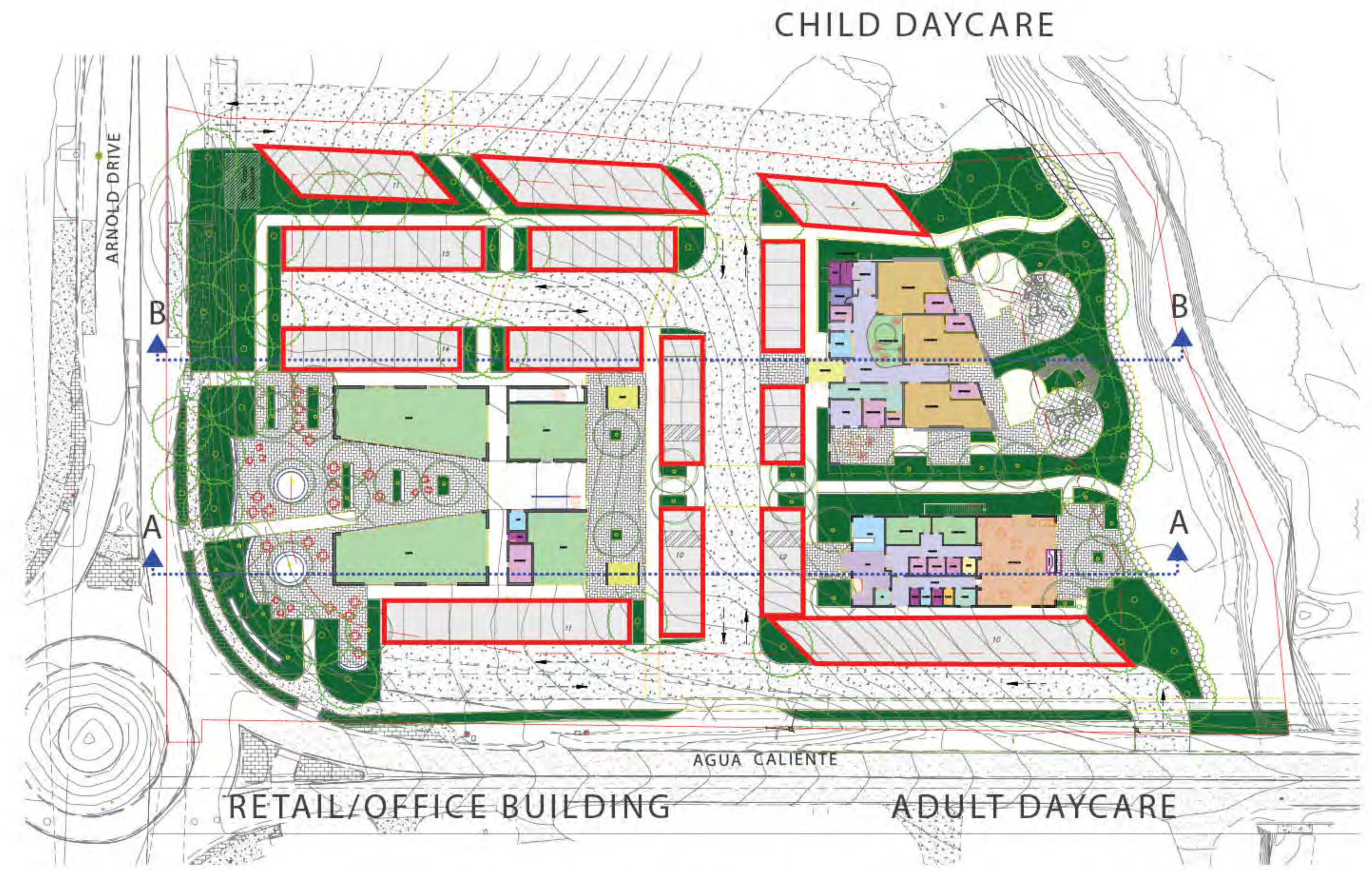
Part No.	W	H	D	Weight
77900	50.0 W (E)	19.1 H	2.6 D	5.0 lbs

BEGA 1000 BEGA Way, Carpinteria, CA 93013 (805)664-0533 FAX (805)566-0474 www.bega-usa.com
Copyright © BEGA US 2019. Updated 01/15/2023

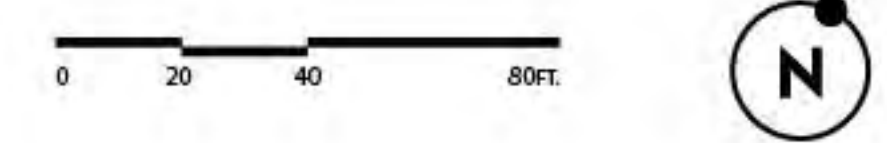
Luminaire Schedule													
Symbol	Qty	Tag	Arrangement	Luminaire Lumens	LLF	LLD	LDD	Description	Mounting Height	Arm	Luminaire Watts	Data Source Filename	
	326	S2	Single	1474	0.850	0.944	0.900	BEGA 84220-K4 1475 Lumens	2.96	0	15	84220K4_BEGA_IES.ies	
	124	S3	Single	3134	0.850	0.944	0.900	BEGA 77165-K4 3134 Lumens	18.479	0	36	77165.ies	
	96	S5	Single	4974	0.850	0.944	0.900	BEGA 77950-K4 4974 Lumens	25	5.2917	57	77950_BEGA_IES.ies	



PARTIAL SITE PLAN - VOCATIONAL TRAINING CENTER



PARTIAL SITE PLAN - RETAIL, CHILD DAYCARE & ADULT DAYCARE



NO.	TYPE	TOTAL PARKING PROVIDED	MINIMUM PARKING REQUIRED	ACCESSIBLE PARKING PROVIDED	BICYCLE PARKING PROVIDED
1.	VTC	78	50	2	10

NO.	TYPE	TOTAL PARKING PROVIDED	MINIMUM PARKING REQUIRED	ACCESSIBLE PARKING PROVIDED	BICYCLE PARKING PROVIDED
1.	RETAIL	47	47	4	10
2.	CHILD DAYCARE	14	16	2	3
3.	ADULT DAYCARE	24	24	3	5



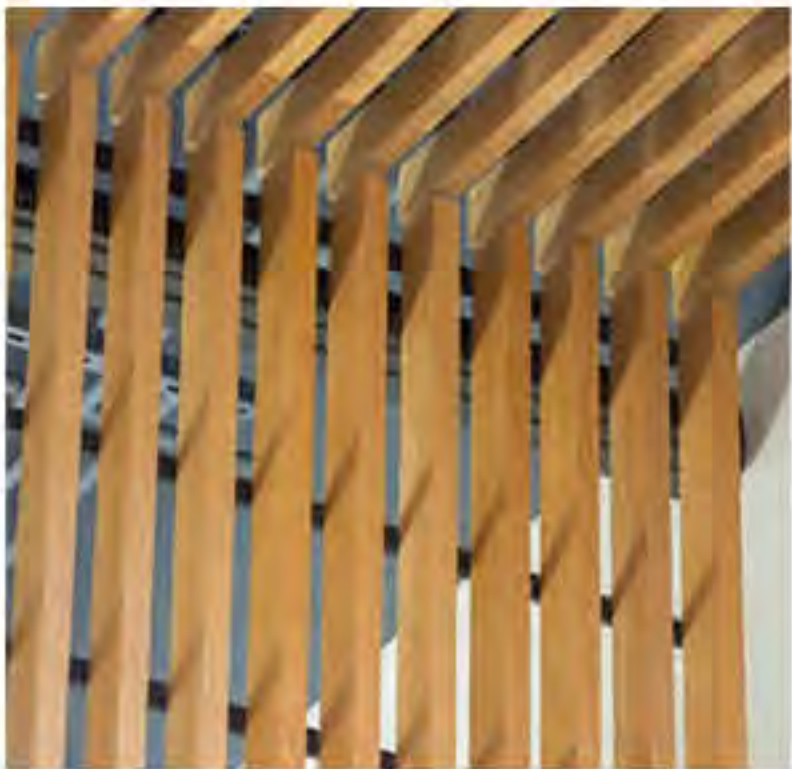
MT-01-STANDING SEAM METAL ROOF



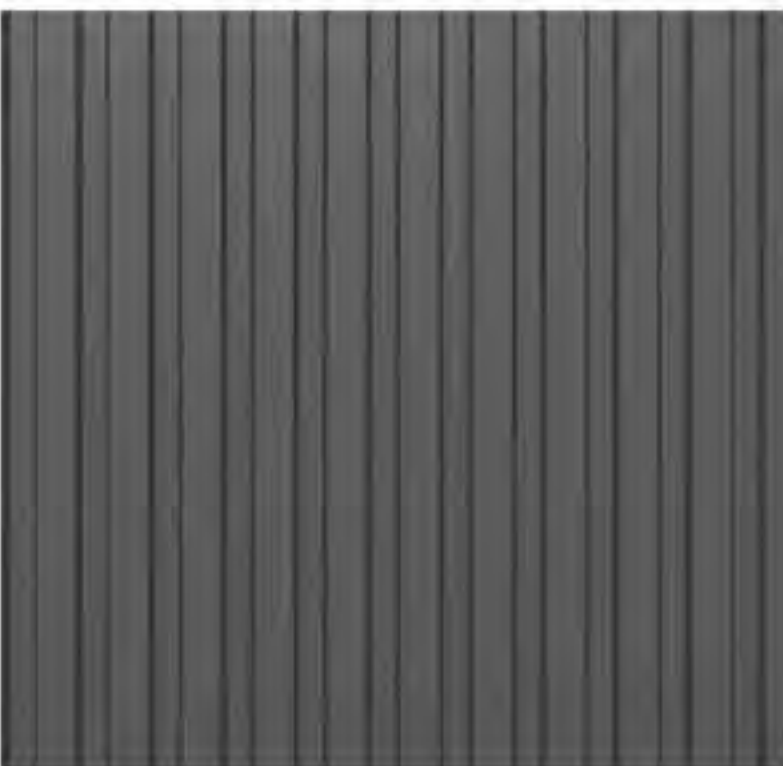
ST-02-STONE



MT-02-ALUMINUM - BLACK



WD-01- WOOD SCREEN/TRELLIS



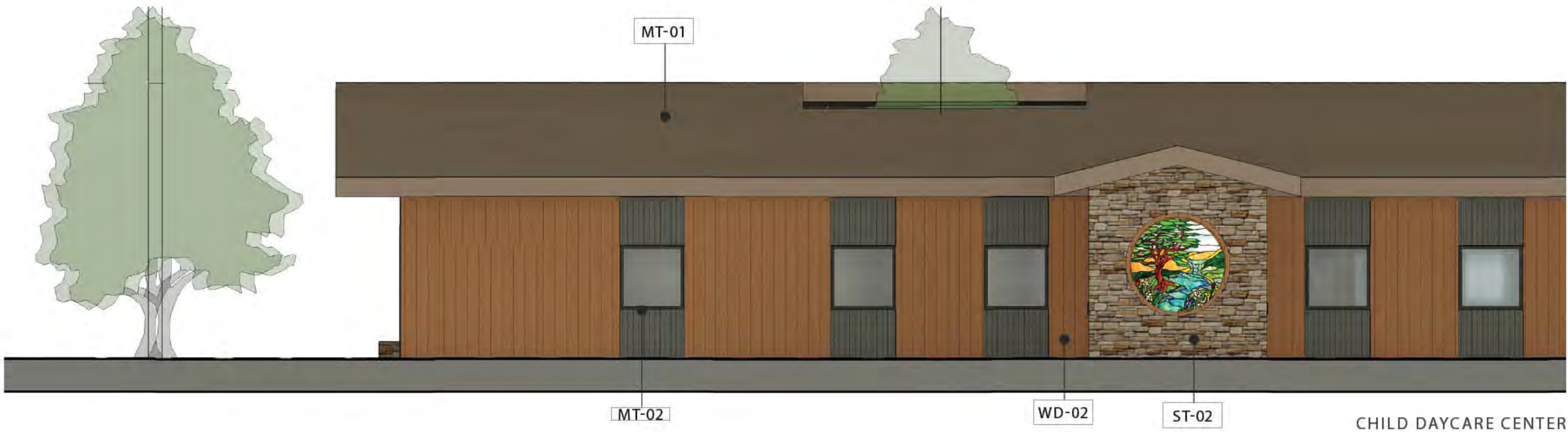
MT-03-METAL SIDING



WD-02-WOOD SIDING



RETAIL/OFFICE BUILDING



CHILD DAYCARE CENTER



MT-01-STANDING SEAM METAL ROOF



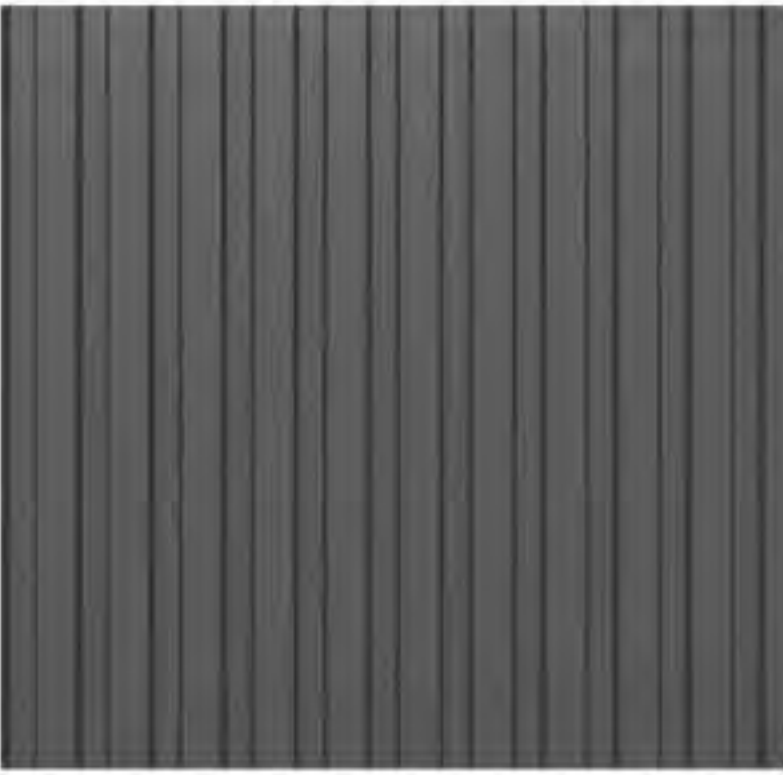
ST-01-SPLIT FACE CMU



MT-02-ALUMINUM - BLACK



ST-03- SPLIT FACE CMU



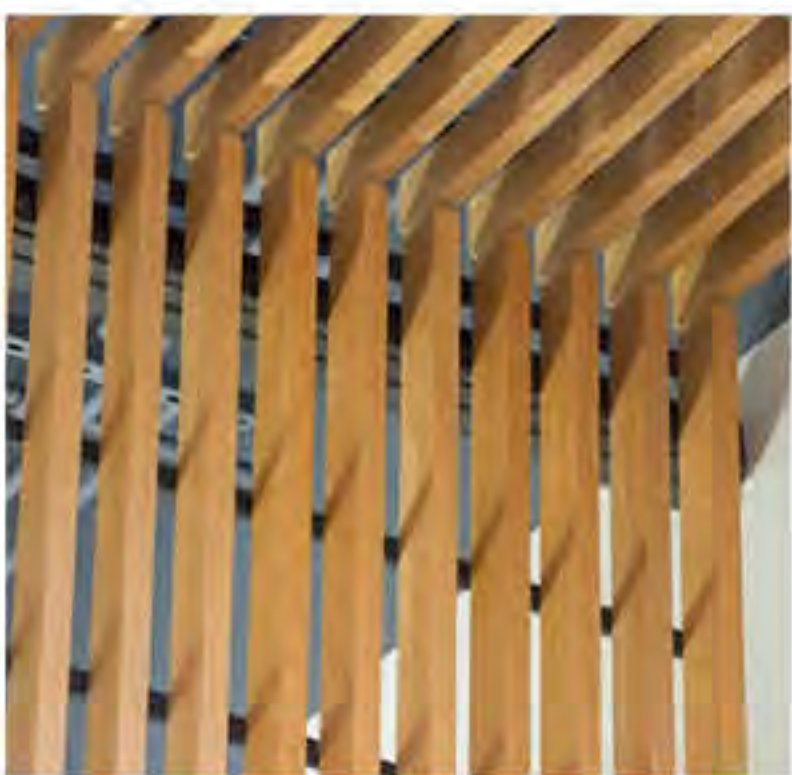
MT-03-METAL SIDING



ST-02-STONE



WD-02-WOOD SIDING



WD-01- WOOD SCREEN/TRELLIS



ADULT DAYCARE CENTER



VOCATIONAL TRAINING CENTER