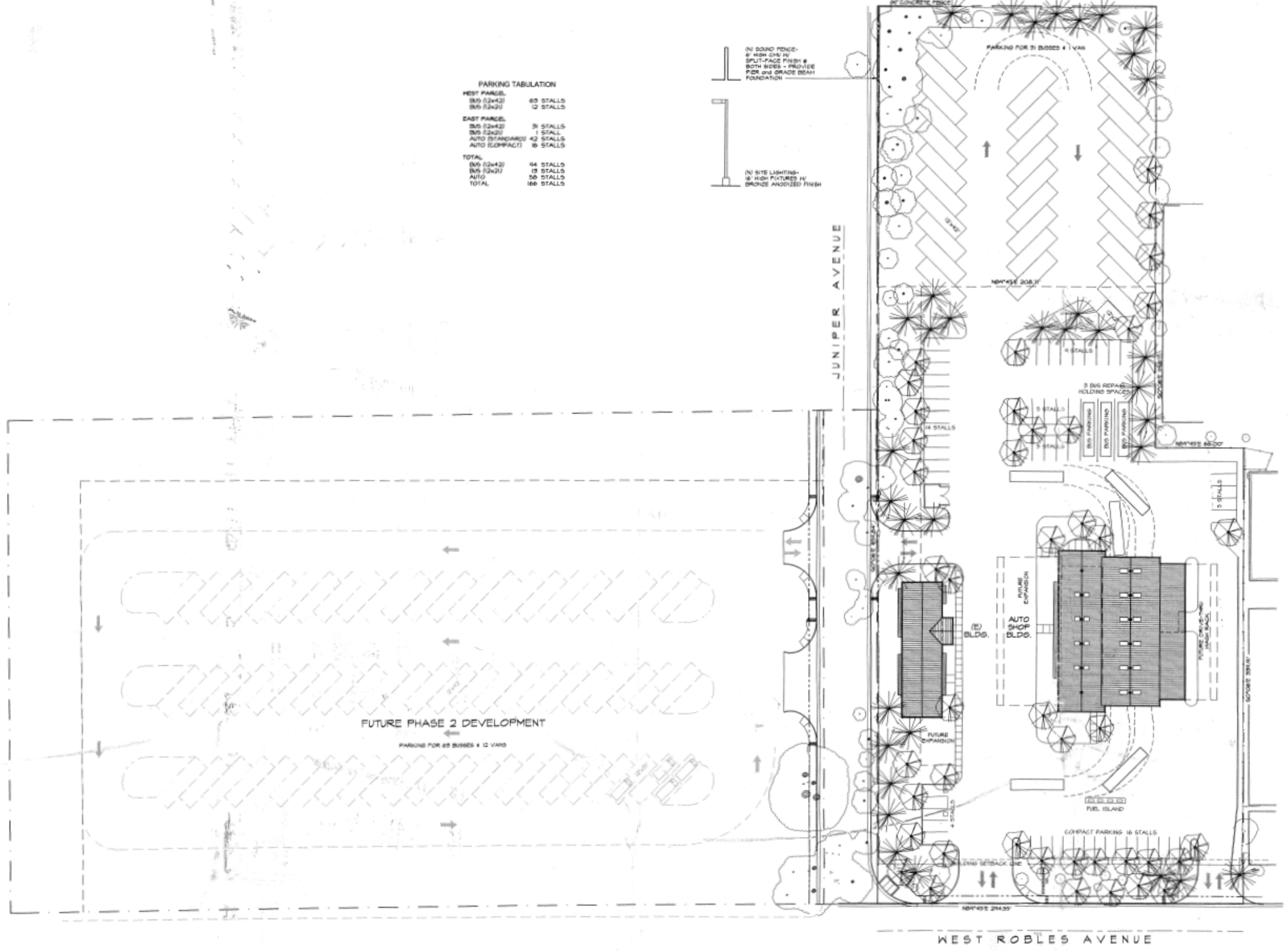
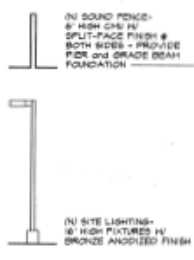


PARKING TABULATION

WEST PARCEL	
BUS (32x42)	63 STALLS
BUS (32x20)	12 STALLS
EAST PARCEL	
BUS (32x42)	36 STALLS
BUS (32x20)	1 STALL
AUTO (STANDARD)	42 STALLS
AUTO (COMPACT)	16 STALLS
TOTAL	
BUS (32x42)	99 STALLS
BUS (32x20)	13 STALLS
AUTO	58 STALLS
TOTAL	166 STALLS



APPROVED FOR SUBMITTAL

 L.A.S. NUMBERED AS INDICATED

 NEEDS TO BE NUMBERED AS INDICATED

 BY: *[Signature]*



PHASE 1 SITE PLAN

WEST COUNTY TRANSPORTATION
JULY 19, 2000