

# Todd Road/Standish Avenue Signalization Project – Initial Study/ Mitigated Negative Declaration

---

DEPARTMENT OF TRANSPORTATION AND PUBLIC WORKS

DECEMBER 7, 2021



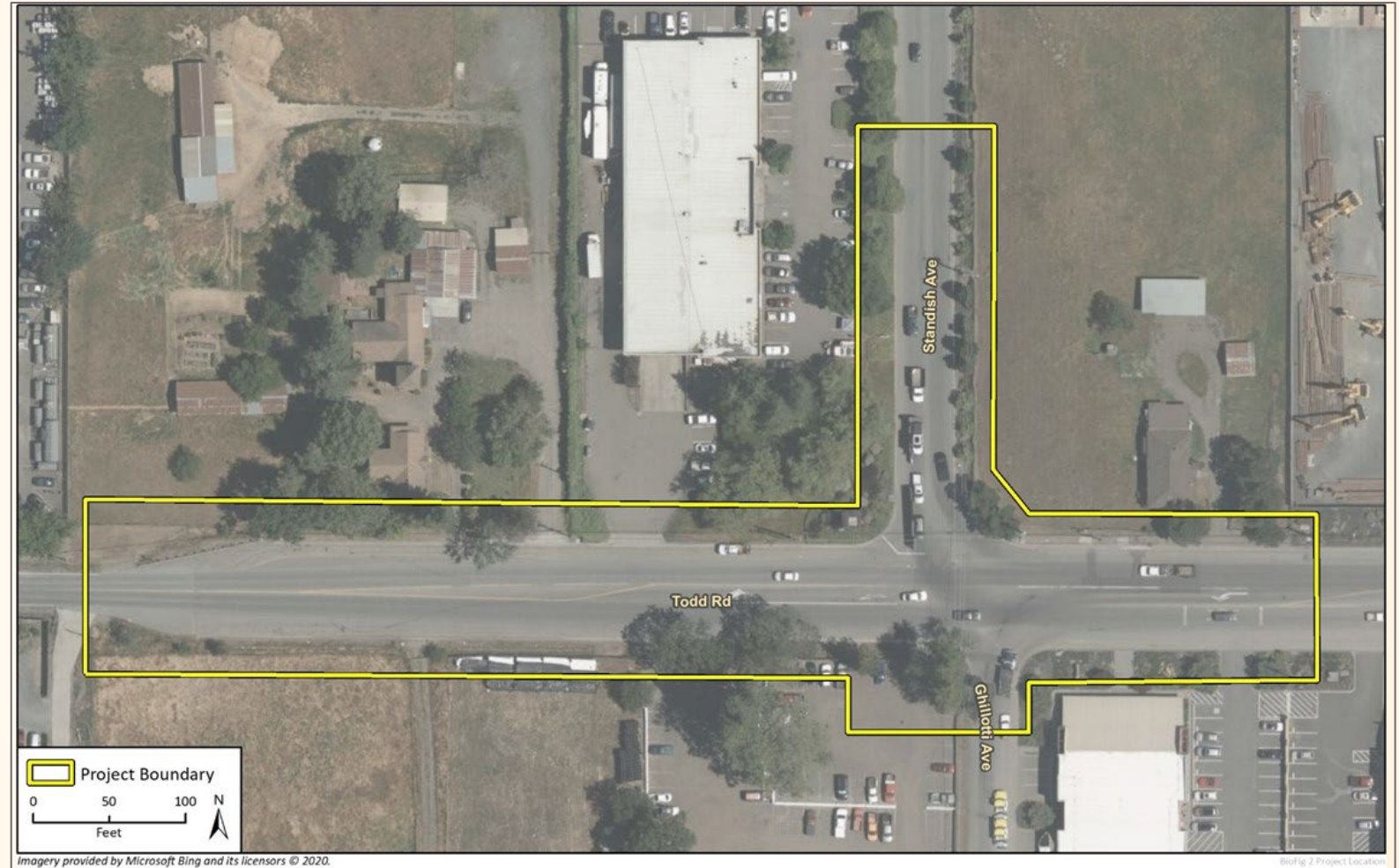
# Presentation Overview

---

1. Project Overview
  - Description
  - Status
2. Overview of Environmental Findings
  - Operational Phase: No Impacts
  - Construction Impacts: Less than Significant with Mitigation
3. Response to ERC Comments from Oct 5<sup>th</sup>
4. Project Schedule
5. Questions

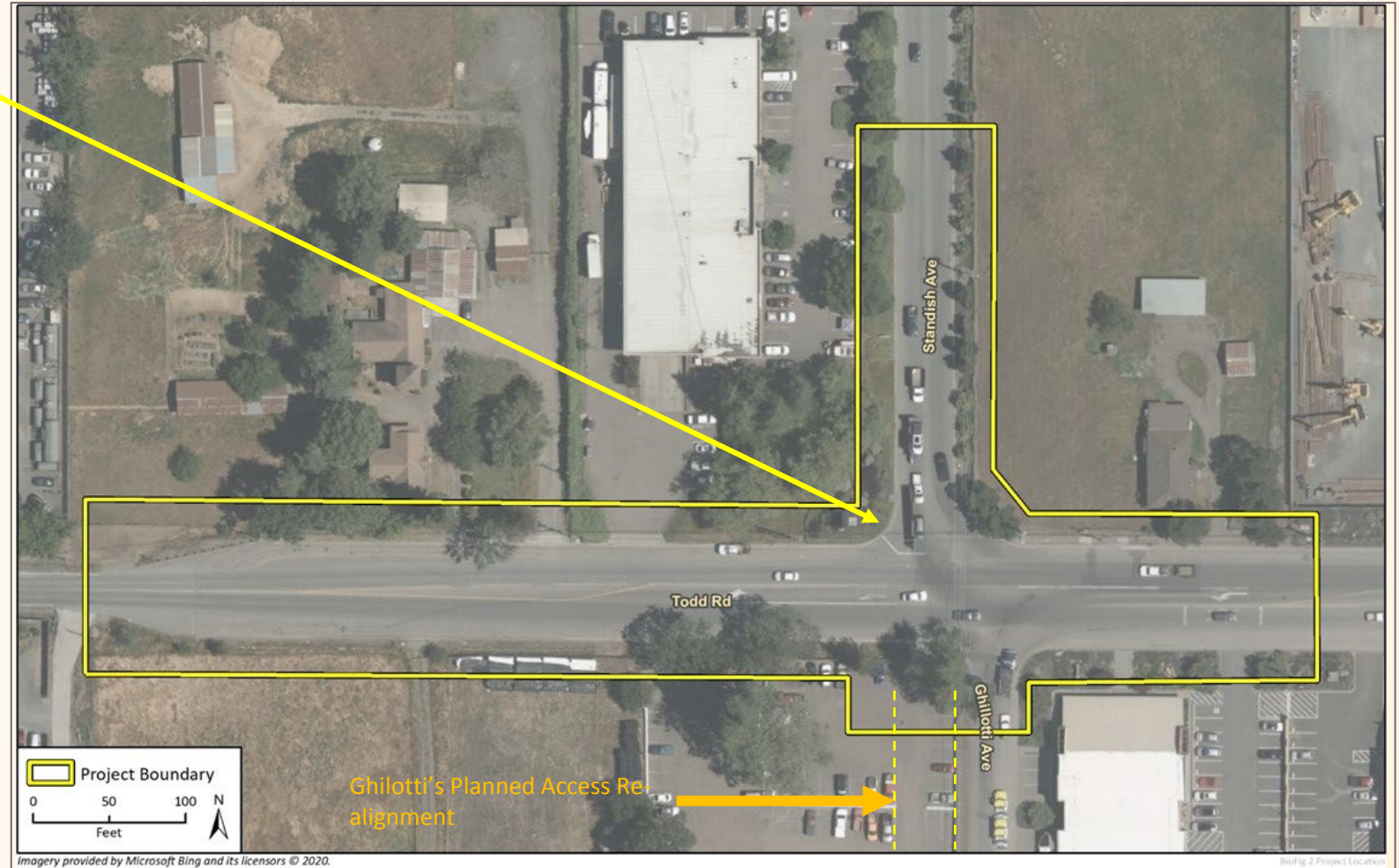
# Todd Road Signalization Project Overview

- ❑ Install traffic signal
- ❑ Align Intersection with Ghilotti's proposed access shift to Standish Avenue
- ❑ Improve Intersection (sidewalk, curb ramps, intersection radii)
- ❑ Meeting Americans with Disabilities Act (ADA) standards
- ❑ Improve pedestrian safety at crossing - striping and electronic button signal.



# Project Overview Continued..

- ❑ Minor sliver Right-of-way acquisition needed in northwest corner (approximately 460 square feet, less than 0.1 ac)
- ❑ Roadway crown and drainage adjustment will not impact adjacent drainages
- ❑ Construction would maintain 1 travel lane in each direction with only potential for evening lane closures during low traffic periods
- ❑ A Construction Management Plan will include traffic, outreach, noise, dust and debris management specifications.



# Overview of Environmental Findings

---

**Operation Phase:** No Impacts.  
No capacity enhancements. Emphasis is on improving safety, intersection sight-line and pedestrian safety.

**Construction Phase:**  
Short term in nature - approximately 40 to 50 working days (8 to 10 weeks).

Nighttime and Saturday construction may be necessary to avoid heavy daytime traffic.

## **No or negligible Impacts on:**

- Aesthetics
- Agriculture
- Air Quality
- Energy
- Geology/ Soils
- Greenhouse Gas
- Hydrology and water quality
- Land use and Planning
- Mineral resources
- Population/ Housing
- Recreational resources
- Transportation
- Utilities and services

# Overview of Environmental Findings

---

Construction related impacts require mitigation measures to reduce to Less than Significant. However,

- 1) Impacts are primarily those that MAY occur but generally unlikely, or potentially avoidable when applying...
- 2) familiar Mitigation Measures which are common to construction packages

## Potential For Significant Impacts on:

- Biological Resources
- Cultural Resources
- Paleontological Resources
- Hazardous Materials
- Noise
- Tribal/ Cultural Resources

# Response to ERC Comments

**Stormwater Treatment:** Santa Rosa Urban Storm Water Mitigation Plan applies >1 ac.

**Response:** Not applicable because Project results in under 0.1 ac. Of new impervious surface

## **Consider Bicycle Lanes:**

Class II bicycle lanes on Todd Road are identified in the General Plan, Circulation and Transit Element.

**Response:** This would change the scope, the project limits and range of impacts since Bike lane would require widening shoulders and altering roadway design.

## **Stormwater overflow Easement on the property West of Project?**

**Response:** Not anticipated to be needed. No nearby creeks and area is not beyond the FEMA 100-year floodplain. Project would create a negligible increase in stormwater flows.

## **Signalization versus Roundabout Selection?**

**Response:** Project purpose to align intersection to improve safety for heavy intersection movements involving large trucks and transit vehicles. Roundabouts would require larger right-of-way to accommodate larger radius turns. If not, trucks drive over and result in higher maintenance issues. Also, higher utility relocation costs.

# Response to ERC Comments

---

**Possibility of coordinating signal or and/or a loop near tracks to trigger a green light at Standish?**

**Response:** Not anticipated to be needed. 550 feet between the Todd Road/Standish Avenue intersection and the SMART crossing. 2021 Traffic Management Technical Memorandum for this project noted that the queuing lengths were adequate. Construction should not result in back-ups either.

**Santa Rosa's General Plan was mentioned, but what of the Sonoma County General Plan?**

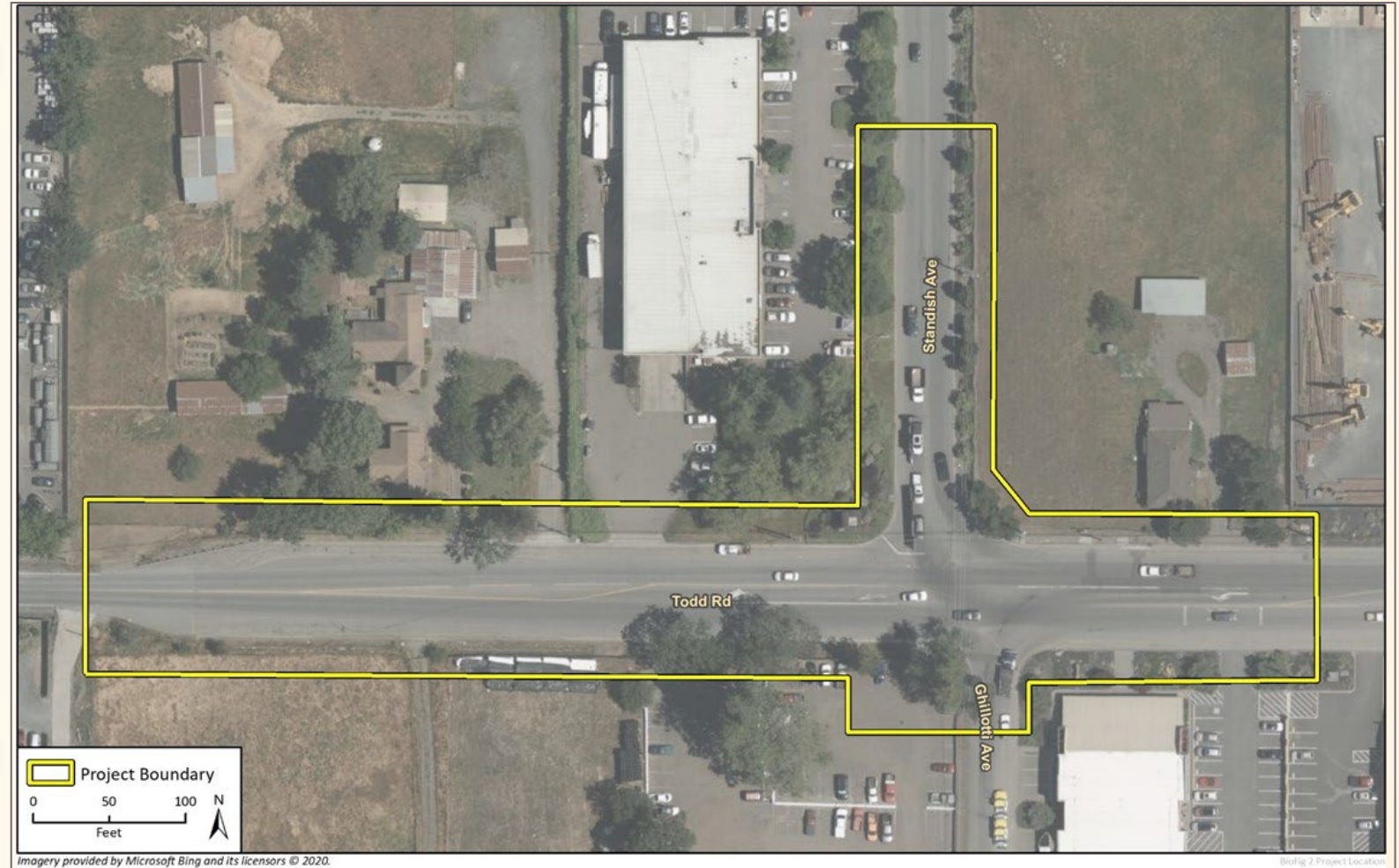
**Response:** Santa Rosa GP was referenced in geology and soils discussion because the Sonoma County General Plan did not provide information about local available soil types.

Sonoma County General Plan is referenced in the Initial Study in the Aesthetics, Biological Resources, Energy and Noise discussions.



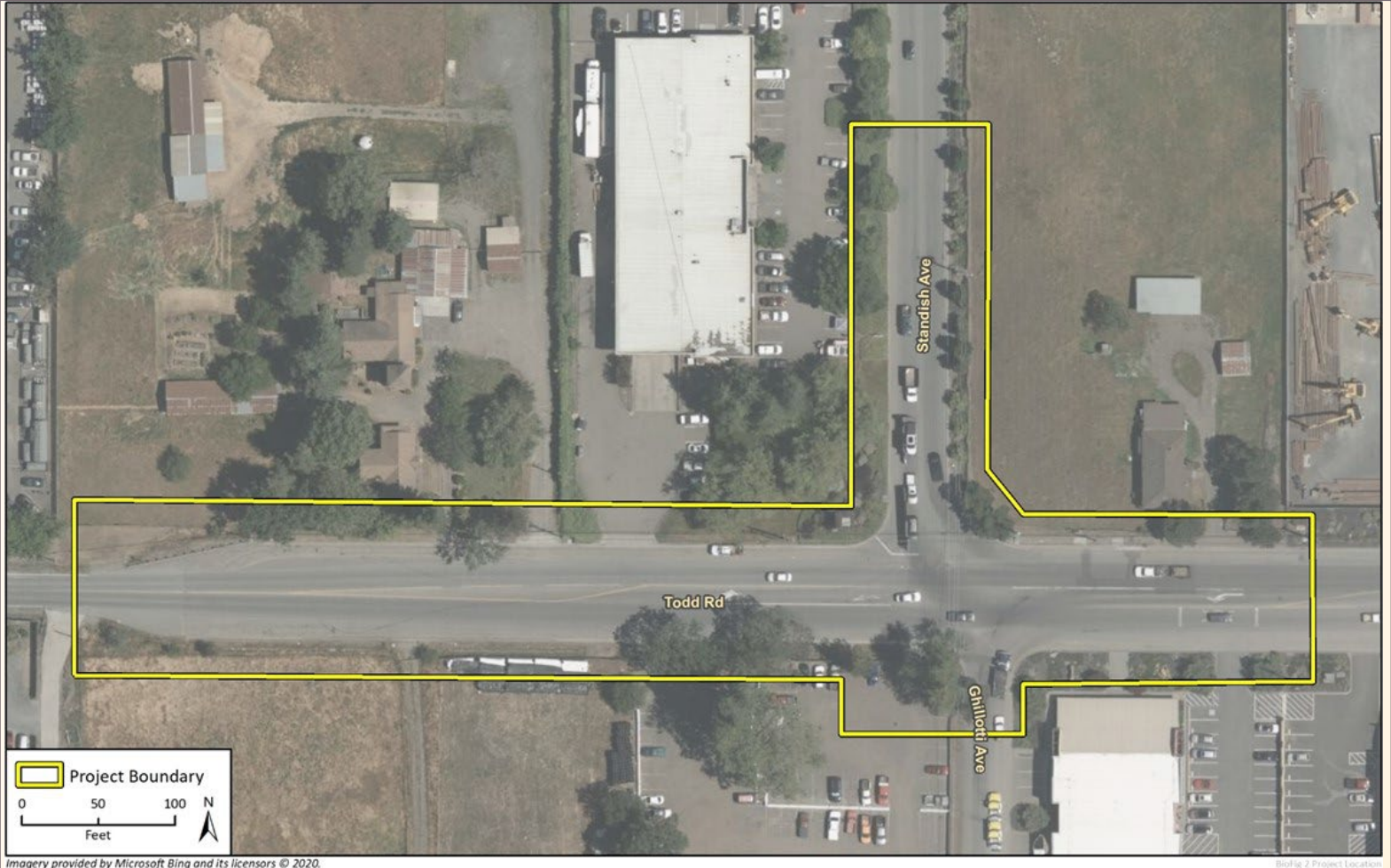
# Project Schedule

- ❑ 100 Percent Design submitted
- ❑ Construction timing is funding-dependent
- ❑ Confirming parcel right-of-way acquisition requirements
- ❑ Public Review of IS/MND in January 2022



# Todd Road /Standish Avenue Signalization Project

QUESTIONS?



# Todd Road /Standish Avenue Signalization Project

REPEATING SLIDES FROM  
PREVIOUS  
ENVIRONMENTAL REVIEW  
COMMITTEE MEETING  
FOLLOW



# With Implementation of Mitigation Measures, Impacts become Less Than Significant

## Biological Resources

- No or Less than Significant Impact on most special status plants and wildlife species.
- **IMPACT:** Potential for impact on special status raptors or migratory/ native birds with tree removal.
- **BIO-1:** Prior to construction, and the nesting season (generally February 1 to August 31), surveys for nesting birds shall be conducted by a qualified biologist.

## Cultural Resources

- No recorded archaeological sites have been identified / no impacts on historical resources.
- **IMPACT:** Potential to encounter previously undiscovered archaeological resources or human remains.
- **CUL-1:** Halt Construction and implement Sonoma Municipal Code (Chapter 11 as amended by Ordinance No. 6331) and State of California Health and Safety Code Section 7050.5 states that no further disturbance shall occur until the County Coroner has made a determination of origin and disposition pursuant to Public Resources Code Section 5097.98.

## Paleontological Resources

- No paleontological resources have been identified.
- **IMPACT:** Soils indicate a potential to encounter paleontological resources.
- **GEO-1:** all work shall cease until a certified paleontologist can investigate the find and make appropriate recommendations.

# With Implementation of Mitigation Measures, Impacts become Less Than Significant

## Hazards and Hazardous Materials

- **IMPACT:** : Construction could result in the release of hazardous materials and/or encounter an unreported release from adjacent properties.
- **HAZ-1:** Conduct Phase II Env Study Assessment per ASTM Standard E1903-11
- **HAZ-2:** Prepare and implement a Soil Management Plan (SMP) or equivalent document shall be prepared by a qualified environmental consultant to address onsite handling and management of soils
- **HAZ-3:** Remediation If hazardous soils are present, hazardous waste soils are present in the disturbed areas of the proposed project, the impacted soils shall be removed and disposed properly

## Noise

- **IMPACT:** : Construction would result in temporary increases in noise levels at a residentially zoned property.
- **NOISE-1:** Manage/monitor noise and as needed, implement a temporary sound barrier and/or sound blanket that would break the line of sight between the construction equipment and the affected receiver(s); and

## Tribal Cultural Resources

- No specific tribal cultural resources have been identified in the project area.
- **IMPACT:** There is the possibility of encountering undisturbed subsurface tribal cultural resources which could result in potentially significant impacts.
- **TCR-1:** All earth-disturbing work in the vicinity of the find must be temporarily suspended or redirected until an archaeologist has evaluated the nature and significance of the find and an appropriate Native American representative and mitigation plan is approved and implemented.