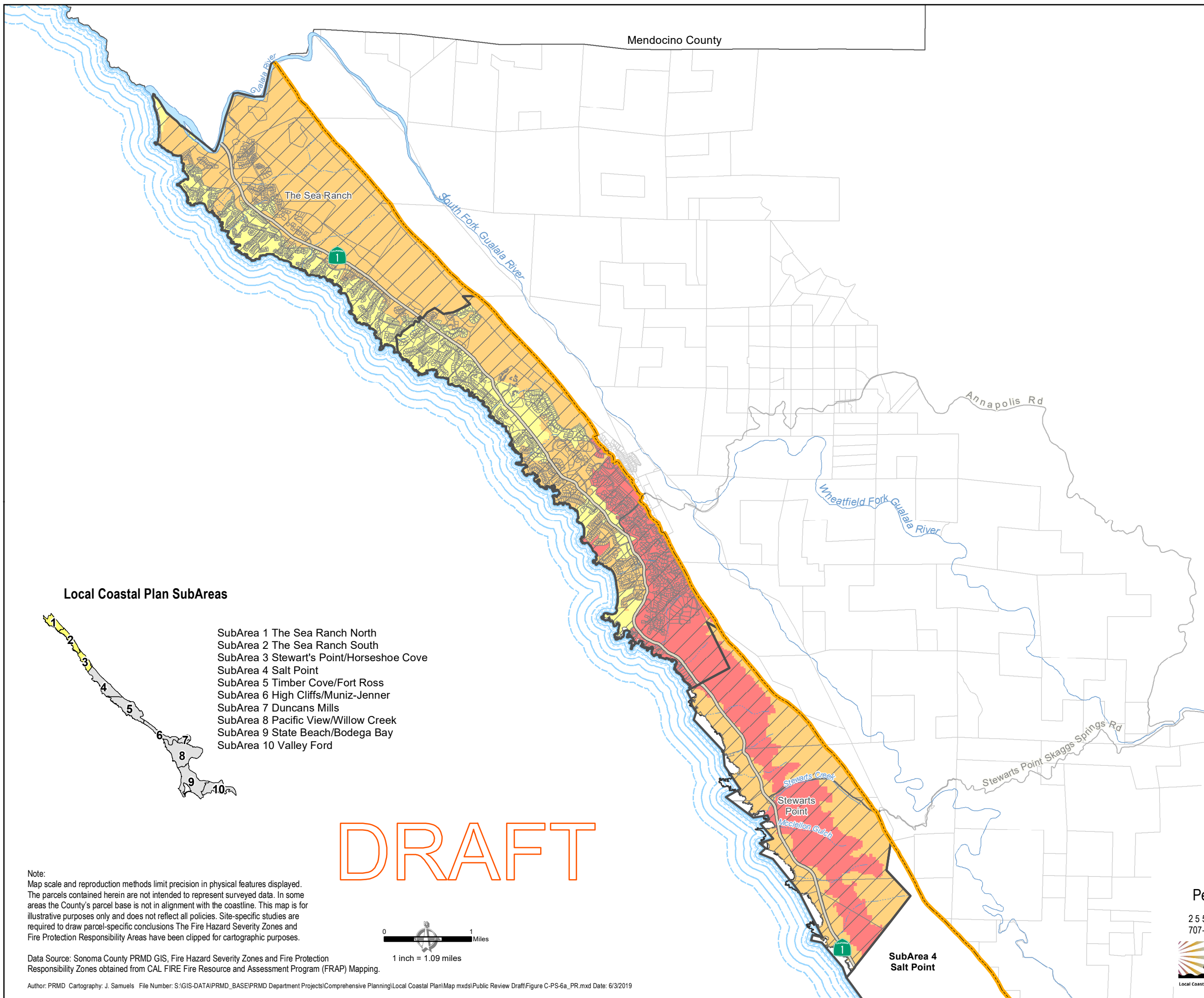


# Sonoma County Local Coastal Plan Wildland Fire Threat



### Fire Hazard Severity Zones

- Very High ■
- High ■
- Moderate ■

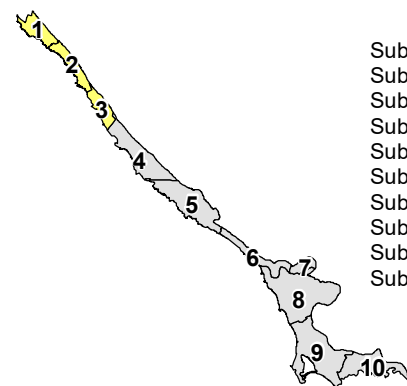
### Fire Protection Responsibility Areas

- SRA

### Base Map Layers

- Coastal SubArea
- Parcel
- Coastal Zone Boundary
- Natural Coastline
- Highway
- Road
- Perennial Stream
- Intermittent Stream

### Local Coastal Plan SubAreas



- SubArea 1 The Sea Ranch North
- SubArea 2 The Sea Ranch South
- SubArea 3 Stewart's Point/Horseshoe Cove
- SubArea 4 Salt Point
- SubArea 5 Timber Cove/Fort Ross
- SubArea 6 High Cliffs/Muniz-Jenner
- SubArea 7 Duncans Mills
- SubArea 8 Pacific View/Willow Creek
- SubArea 9 State Beach/Bodega Bay
- SubArea 10 Valley Ford

DRAFT

Note:  
Map scale and reproduction methods limit precision in physical features displayed. The parcels contained herein are not intended to represent surveyed data. In some areas the County's parcel base is not in alignment with the coastline. This map is for illustrative purposes only and does not reflect all policies. Site-specific studies are required to draw parcel-specific conclusions. The Fire Hazard Severity Zones and Fire Protection Responsibility Areas have been clipped for cartographic purposes.



Data Source: Sonoma County PRMD GIS, Fire Hazard Severity Zones and Fire Protection Responsibility Zones obtained from CAL FIRE Fire Resource and Assessment Program (FRAP) Mapping.

Author: PRMD Cartography: J. Samuels File Number: S:\GIS-DATA\PRMD\_BASE\PRMD Department Projects\Comprehensive Planning\Local Coastal Plan\Map mxd\Public Review Draft\Figure C-PS-6a\_PR.mxd Date: 6/3/2019

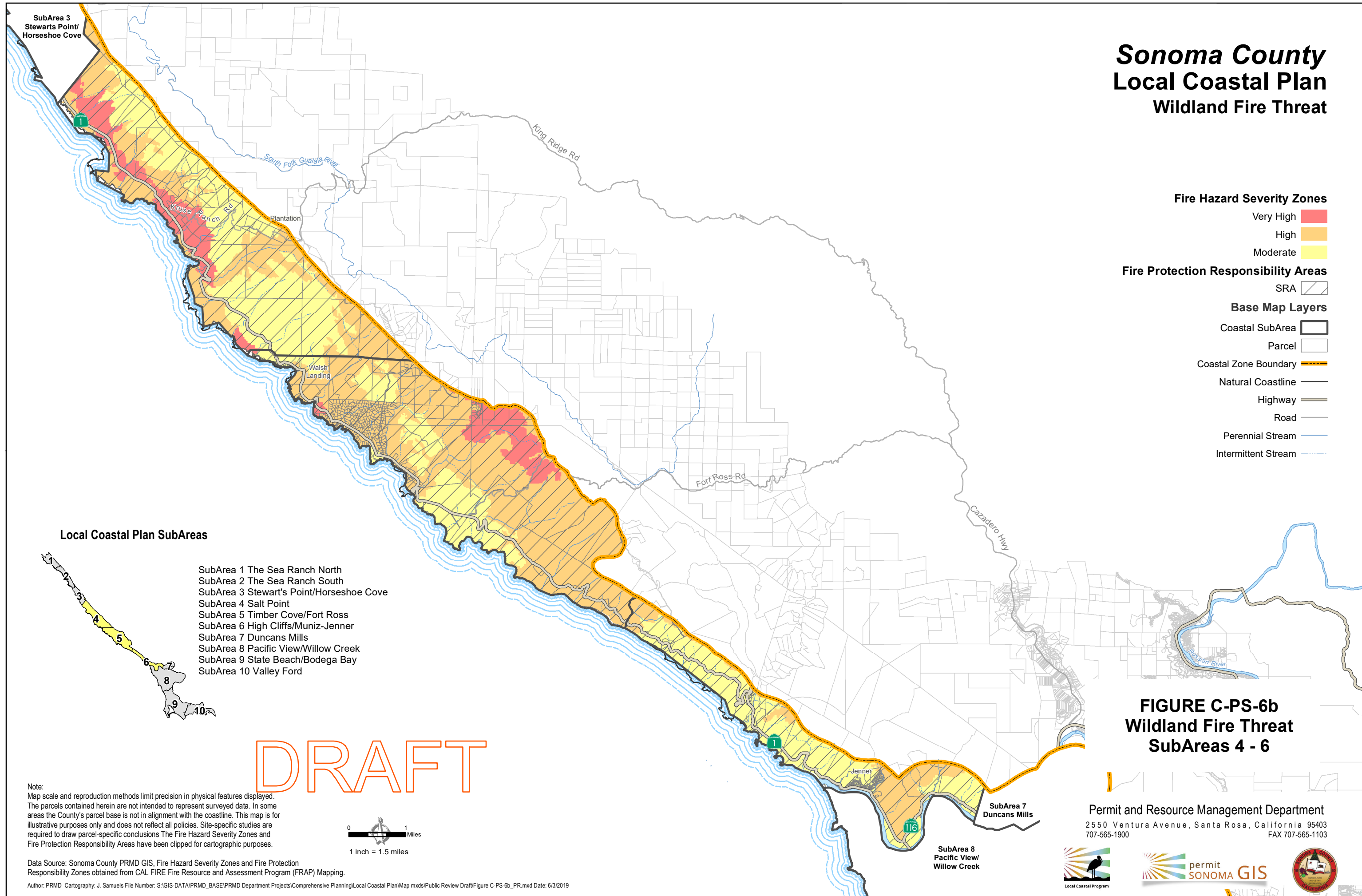
**FIGURE C-PS-6a  
Wildland Fire Threat  
SubAreas 1 - 3**

Permit and Resource Management Department

2550 Ventura Avenue, Santa Rosa, California 95403  
707-565-1900 FAX 707-565-1103



# Sonoma County Local Coastal Plan Wildland Fire Threat



### Fire Hazard Severity Zones

- Very High ■
- High ■
- Moderate ■

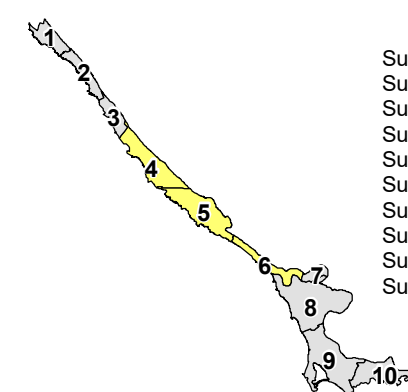
### Fire Protection Responsibility Areas

- SRA

### Base Map Layers

- Coastal SubArea
- Parcel
- Coastal Zone Boundary
- Natural Coastline
- Highway
- Road
- Perennial Stream
- Intermittent Stream

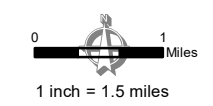
### Local Coastal Plan SubAreas



- SubArea 1 The Sea Ranch North
- SubArea 2 The Sea Ranch South
- SubArea 3 Stewart's Point/Horseshoe Cove
- SubArea 4 Salt Point
- SubArea 5 Timber Cove/Fort Ross
- SubArea 6 High Cliffs/Muniz-Jenner
- SubArea 7 Duncans Mills
- SubArea 8 Pacific View/Willow Creek
- SubArea 9 State Beach/Bodega Bay
- SubArea 10 Valley Ford

# DRAFT

**Note:**  
Map scale and reproduction methods limit precision in physical features displayed. The parcels contained herein are not intended to represent surveyed data. In some areas the County's parcel base is not in alignment with the coastline. This map is for illustrative purposes only and does not reflect all policies. Site-specific studies are required to draw parcel-specific conclusions. The Fire Hazard Severity Zones and Fire Protection Responsibility Areas have been clipped for cartographic purposes.



Data Source: Sonoma County PRMD GIS, Fire Hazard Severity Zones and Fire Protection Responsibility Zones obtained from CAL FIRE Fire Resource and Assessment Program (FRAP) Mapping.  
Author: PRMD Cartography: J. Samuels File Number: S:\GIS-DATA\PRMD\_BASE\PRMD Department Projects\Comprehensive Planning\Local Coastal Plan\Map mxds\Public Review Draft\Figure C-PS-6b\_PR.mxd Date: 6/3/2019

## FIGURE C-PS-6b Wildland Fire Threat SubAreas 4 - 6

Permit and Resource Management Department  
2550 Ventura Avenue, Santa Rosa, California 95403  
707-565-1900 FAX 707-565-1103



# Sonoma County Local Coastal Plan Wildland Fire Threat

## Fire Hazard Severity Zones

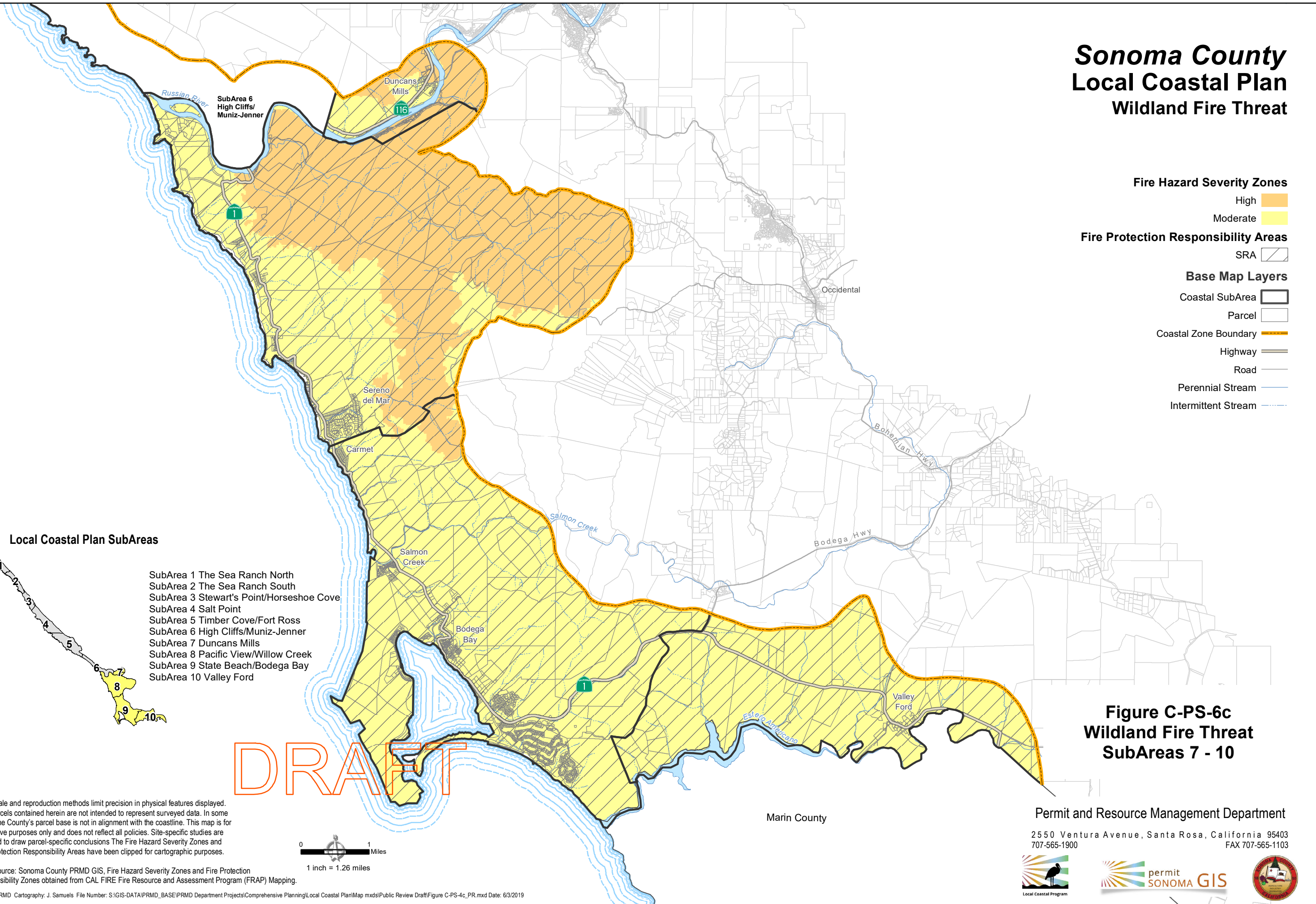
- High
- Moderate

## Fire Protection Responsibility Areas

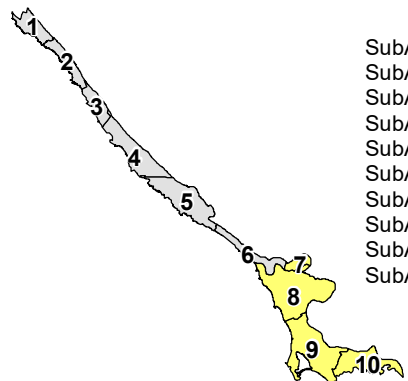
- SRA

## Base Map Layers

- Coastal SubArea
- Parcel
- Coastal Zone Boundary
- Highway
- Road
- Perennial Stream
- Intermittent Stream



### Local Coastal Plan SubAreas



- SubArea 1 The Sea Ranch North
- SubArea 2 The Sea Ranch South
- SubArea 3 Stewart's Point/Horseshoe Cove
- SubArea 4 Salt Point
- SubArea 5 Timber Cove/Fort Ross
- SubArea 6 High Cliffs/Muniz-Jenner
- SubArea 7 Duncans Mills
- SubArea 8 Pacific View/Willow Creek
- SubArea 9 State Beach/Bodega Bay
- SubArea 10 Valley Ford

DRAFT

**Figure C-PS-6c  
Wildland Fire Threat  
SubAreas 7 - 10**

Note:  
Map scale and reproduction methods limit precision in physical features displayed. The parcels contained herein are not intended to represent surveyed data. In some areas the County's parcel base is not in alignment with the coastline. This map is for illustrative purposes only and does not reflect all policies. Site-specific studies are required to draw parcel-specific conclusions. The Fire Hazard Severity Zones and Fire Protection Responsibility Areas have been clipped for cartographic purposes.



Data Source: Sonoma County PRMD GIS, Fire Hazard Severity Zones and Fire Protection Responsibility Zones obtained from CAL FIRE Fire Resource and Assessment Program (FRAP) Mapping.

Author: PRMD Cartography, J. Samuels File Number: S:\GIS-DATA\PRMD\_BASE\PRMD Department Projects\Comprehensive Planning\Local Coastal Plan\Map mxd\Public Review Draft\Figure C-PS-6c\_PR.mxd Date: 6/3/2019

Marin County

Permit and Resource Management Department

2550 Ventura Avenue, Santa Rosa, California 95403  
707-565-1900 FAX 707-565-1103

