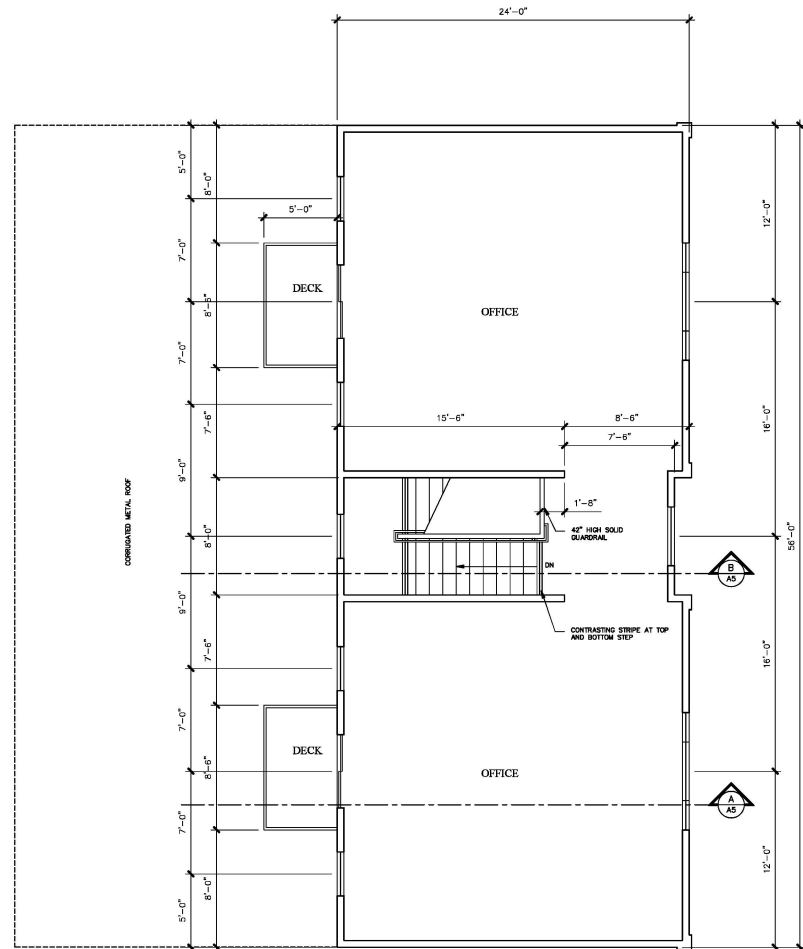


MAIN FLOOR

FLOOR AREA	
MAIN FLOOR	1,320 S.F.
UPPER FLOOR	1,234 S.F.
LOWER FLOOR	1,708 S.F.
LOT COVERAGE	2,576 S.F. / 8,778 = 28%

PARKING	
RETAIL	576 S.F./200 = 2.8 SPACES
OFFICE	1,962 S.F./2200 = 7.8 SPACES
STORAGE	1,708 S.F./3000 = 0.58 SPACE
SPACES REQUIRED	11.18 SPACES
SPACES PROVIDED	11 SPACES



UPPER FLOOR

LIGHTING NOTES:
 ALL EXTERIOR LIGHTING SHALL BE DARK SKY COMPLIANT AND FULLY SHIELDED IN ORDER TO AVOID NIGHTTIME POLLUTION. ALL EXTERIOR LIGHTING SHALL BE DOWNWARD FACING AND LOCATED AT THE LOWEST POSSIBLE POINT TO THE GROUND TO PREVENT SPILL OVER ONTO ADJACENT PROPERTIES, GLARE, NIGHTTIME LIGHT POLLUTION AND UNNECESSARY GLOW IN THE RURAL NIGHT SKY. LUMINAIRCS SHALL HAVE A MAXIMUM OUTPUT OF 1000 LUMENS PER FIXTURE. TOTAL ILLUMINANCE BEYOND THE PROPERTY LINE CREATED BY SIMULTANEOUS OPERATION OF ALL EXTERIOR LIGHTING SHALL NOT EXCEED 1.0 LUX.



Revisions
 1-23-2023
 BUILDING REVISION

IVAN M. LUKRICH
 ARCHITECT

P.O. BOX 1048
 SANTA ROSA, CA 95402
 VOICE: 707/573-1821
 FAX: 707/573-0171

EARTH DESIGN GROUP
 AN/M ARCHITECT

AN/M ARCHITECT
 655A FRONT STREET
 FOREST HILLS, CALIFORNIA

FLOOR PLANS

Job Number
 EDMAN

Drawn By
 JML

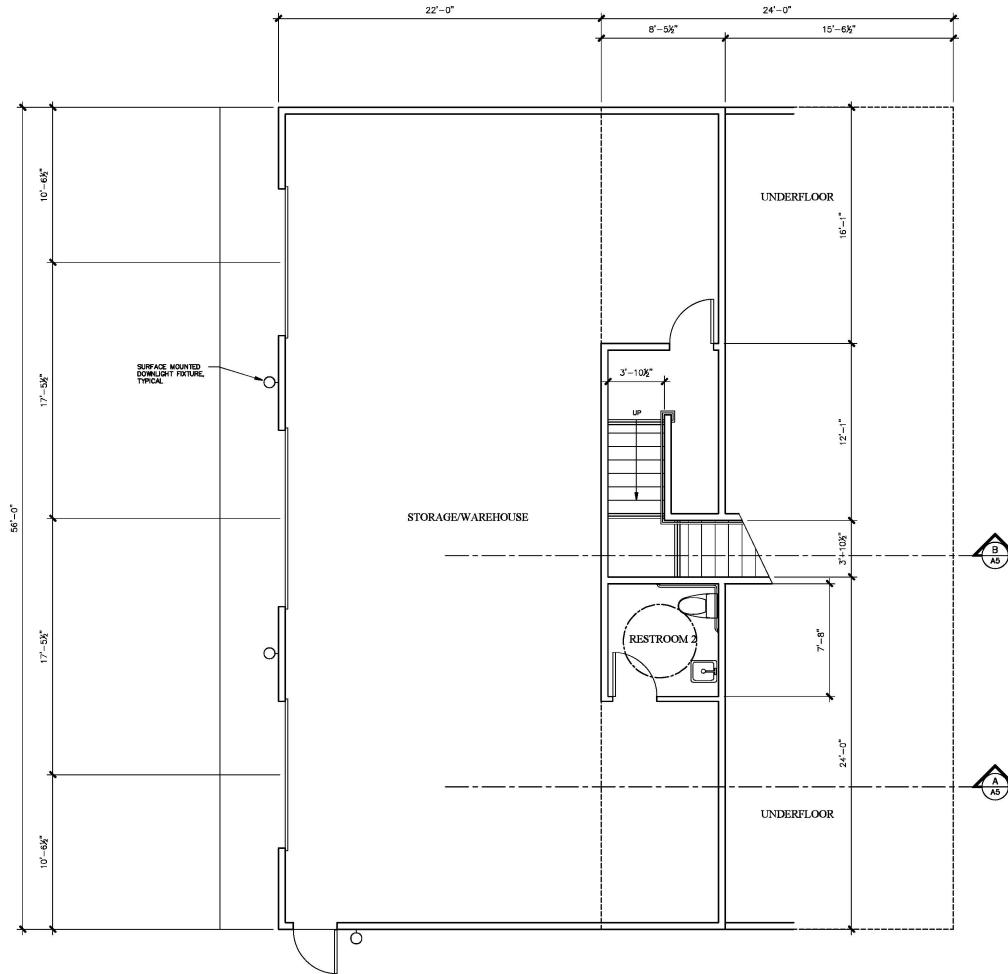
Scale
 1/4" = 1'-0"

Date
 10-14-2022

Sheet Number

A2

of



LOWER FLOOR



Revisions
 1-25-2023
 BUILDING REVISION

IVAN M. LUKRICH
 ARCHITECT
 P.O. BOX 1042, SANTA ROSA, CA 95402
 VOICE: 707/533-8281 FAX: 707/533-8011

EARTH DESIGN GROUP
 ARCHITECTS
 ANM OFFICE
 6524 PLYMOUTH STREET
 FOREST HILLS, CALIFORNIA

FLOOR PLANS

Job Number
 EDMAN

Drawn By
 JML

Scale
 1/4" = 1'-0"

Date
 10-14-2022

Sheet Number

A3

of