

**ABBREVIATIONS:**

AC	ASPHALT CONCRETE	FH	FIRE HYDRANT
AD	AREA DRAIN	GB	GRADE BREAK
ADU	ACCESSORY DWELLING UNIT	LIDF	LOW IMPACT DEVELOPMENT FACILITY
APN	ASSESSOR'S PARCEL NUMBER	LL	LOWER LEVEL
BASMAA	BAY AREA STORMWATER MANAGEMENT AGENCIES ASSOCIATION	(N)	NEW
BFE	BASE FLOOD ELEVATION	PD	PLANTER DRAIN
BLDG	BLDG	PIP	PROTECT IN PLACE
☉	CENTERLINE	PW	PROCESS WASTE
CONC	CONCRETE	SB	SETBACK
DI	DRAIN INLET	SD	STORM DRAIN
DS	DOWNSPOUT	SS	SANITARY SEWAGE
DG	DECOMPOSED GRANITE	STD	STANDARD
(E)	EXISTING	TD	TRENCH DRAIN
FF	FINISH FLOOR	TI	TRAFFIC INDEX
		TYP	TYPICAL
		UL	UPPER LEVEL

**OWNER/APPLICANT:**  
**STARR HOLDINGS LLC**  
 2269 CHESTNUT STREET, #450  
 SAN FRANCISCO, CA 95472

**SUMMIT**  
 Summit Engineering, Inc  
 463 Aviation Blvd., Suite 200 • Santa Rosa, CA 95403  
 707-527-0775 • www.summit-sr.com

**BRICOLEU VINEYARDS**  
 7394 STARR ROAD  
 WINDSOR, CA  
 APN 066-220-019

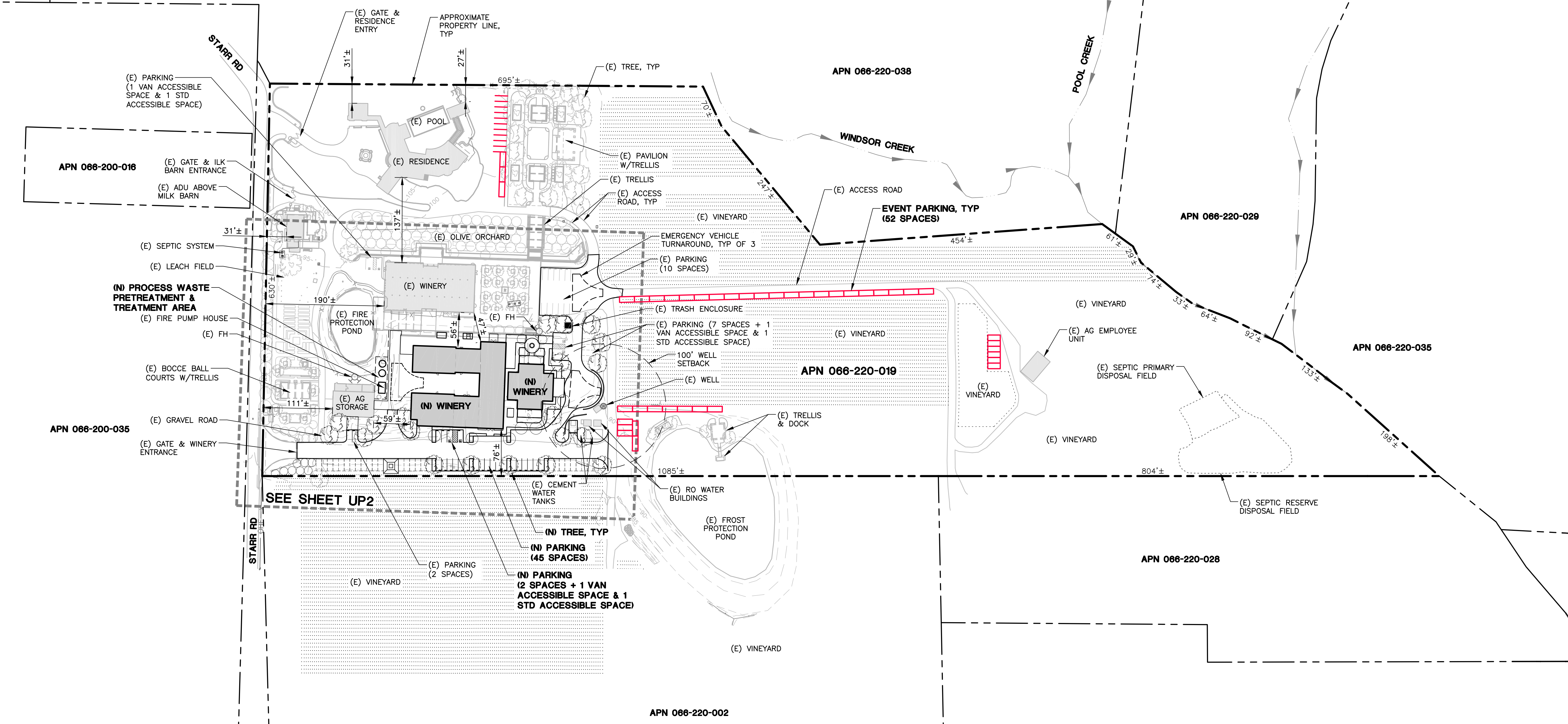
**BRICOLEU VINEYARDS**  
**OVERALL SITE PLAN**

2021-07-23  
 UP SUBMITTAL

DATE: 2021-01-13  
 JOB NO: 20164  
 SCALE: AS SHOWN  
 DRAWN: BG/DW  
 CHECKED: DR  
 SHEET

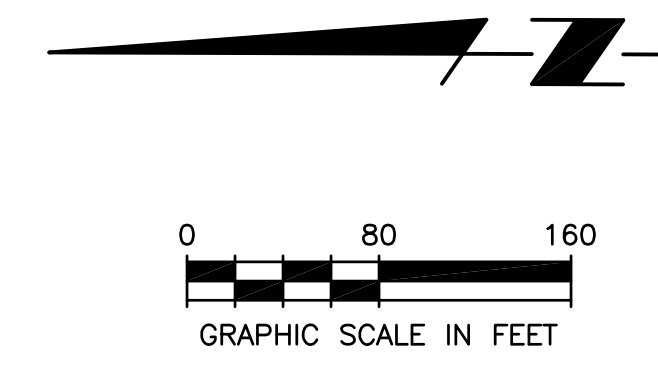
**UP1**  
 1 OF 2

THIS DOCUMENT AND THE IDEAS AND DESIGNS INCORPORATED HEREIN, AS AN INSTRUMENT OF PROFESSIONAL SERVICE, IS THE PROPERTY OF SUMMIT ENGINEERING, INC. AND IS NOT TO BE USED IN WHOLE OR IN PART, FOR ANY OTHER PROJECT WITHOUT THE WRITTEN AUTHORIZATION OF SUMMIT ENGINEERING, INC.



PARKING TABLE	
NUMBER	TYPE
66	STANDARD SPACE
-	COMPACT SPACE
3	VAN ACCESSIBLE SPACE
3	STANDARD ACCESSIBLE SPACE
52	STANDARD EVENT SPACE
<b>124</b>	<b>TOTAL SPACES</b>

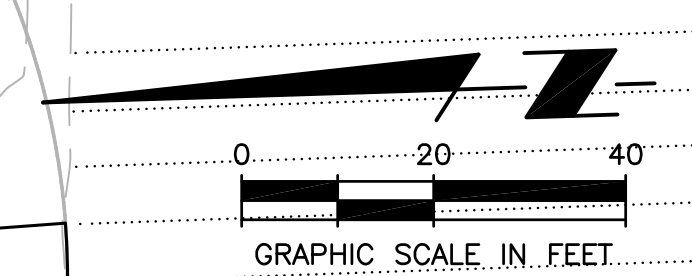
**NOTE:**  
 ALL NEW (N) FEATURES ARE APPROVED UNDER UPE17-0053.





THIS DOCUMENT, AND THE IDEAS AND DESIGNS INCORPORATED HEREIN, AS AN INSTRUMENT OF PROFESSIONAL SERVICE, IS THE PROPERTY OF SUMMIT ENGINEERING, INC. AND IS NOT TO BE USED IN WHOLE OR IN PART, FOR ANY OTHER PROJECT WITHOUT THE WRITTEN AUTHORIZATION OF SUMMIT ENGINEERING, INC.

STARR RD



**SUMMIT**  
Summit Engineering, Inc.  
463 Aviation Blvd., Suite 200 • Santa Rosa, CA 95403  
707-527-0775 • www.summit-sr.com

**BRICOLEU VINEYARDS**  
7394 STARR ROAD  
WINDSOR, CA  
APN 066-220-019

**BRICOLEU VINEYARDS**  
SITE PLAN

2021-07-23  
UP SUBMITTAL

DATE: 2021-01-13  
JOB NO: 20164  
SCALE: AS SHOWN  
DRAWN: BG/DW  
CHECKED: DR

SHEET **UP2**  
2 OF 2

(E) ADU ABOVE MILK BARN

(E) PARKING (1 VAN ACCESSIBLE SPACE & 1 STD ACCESSIBLE SPACE)

(E) OLIVE ORCHARD

(E) TRELLIS

EVENT PARKING, TYP (SEE UP1)

(E) PARKING (10 SPACES)

(E) SHADE TREES

(E) WINERY

(E) VINEYARD

(E) TRASH ENCLOSURE

(E) FIRE PROTECTION POND

(E) PARKING (2 SPACES + 1 VAN ACCESSIBLE SPACE & 1 STD ACCESSIBLE SPACE)

(E) FH

(E) ROSE GARDEN

(E) PARKING (5 SPACES)

(E) FH

EMERGENCY VEHICLE TURNAROUND, TYP OF 3

(N) PROCESS WASTE PRETREATMENT & TREATMENT AREA

APN 066-220-019

(N) RETAINING WALL, TYP

(E) BOCCIE BALL COURTS W/TRELLIS

(E) AG STORAGE

(E) FIRE PUMP HOUSE

(N) WINERY

(N) DROPOFF

(E) WELL

(N) WINERY

(E) RO WATER BUILDINGS

(N) TRASH PICKUP

(E) TRANSFORMER

(E) CEMENT WATER TANKS

(E) PARKING (2 SPACES)

(N) PARKING (2 SPACES + 1 VAN ACCESSIBLE SPACE & 1 STD ACCESSIBLE SPACE)

(N) TREE, TYP

(E) GATE

(N) PARKING (12 SPACES)

(N) PARKING (6 SPACES)

(N) PARKING (6 SPACES)

(N) PARKING (6 SPACES)

(N) PARKING (6 SPACES)

(N) PARKING (9 SPACES)

(N) TREE, TYP

(N) WINDMILL

APPROXIMATE PROPERTY LINE, TYP

APN 066-220-002

(E) VINEYARD

NOTE:

ALL NEW (N) FEATURES ARE APPROVED UNDER UPE17-0053.