

# COUNTY ASSESSOR'S PARCEL MAP

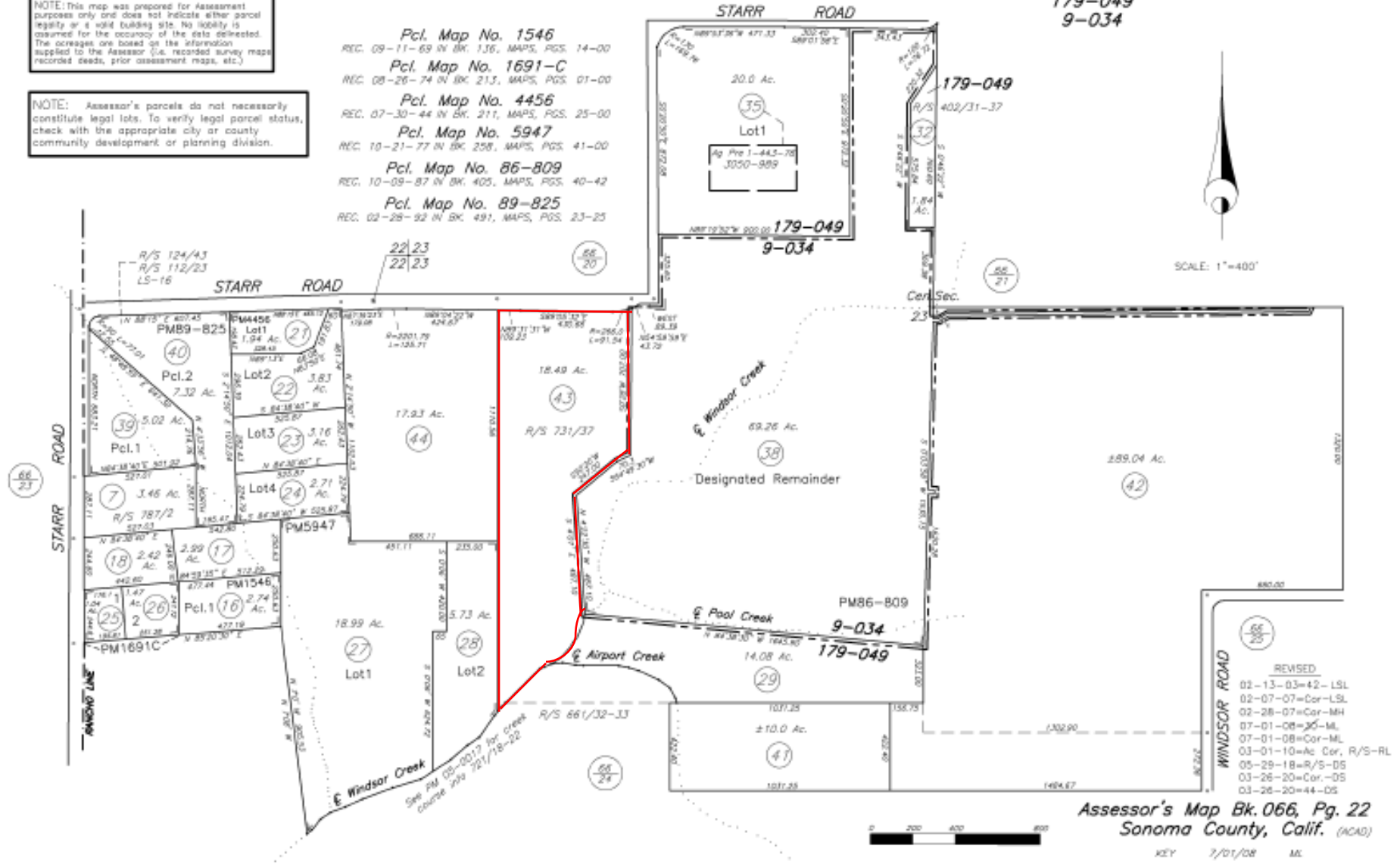
TAX RATE AREA  
179-049  
9-034

066-22

NOTE: This map was prepared for Assessment purposes only and does not indicate either parcel legality or a valid building site. No liability is assumed for the accuracy of the data delineated. The acreages are based on the information supplied to the Assessor (i.e. recorded survey maps, recorded deeds, prior assessment maps, etc.)

NOTE: Assessor's parcels do not necessarily constitute legal lots. To verify legal parcel status, check with the appropriate city or county community development or planning division.

- Pcl. Map No. 1546  
REC. 09-11-69 IN BK. 136, MAPS, PGS. 14-00
- Pcl. Map No. 1691-C  
REC. 08-26-74 IN BK. 213, MAPS, PGS. 01-00
- Pcl. Map No. 4456  
REC. 07-30-44 IN BK. 211, MAPS, PGS. 25-00
- Pcl. Map No. 5947  
REC. 10-21-77 IN BK. 258, MAPS, PGS. 41-00
- Pcl. Map No. 86-809  
REC. 10-09-87 IN BK. 405, MAPS, PGS. 40-42
- Pcl. Map No. 89-825  
REC. 02-26-92 IN BK. 491, MAPS, PGS. 23-25



Assessor's Map Bk. 066, Pg. 22  
Sonoma County, Calif. (ACAD)

KEY 7/01/08 ML