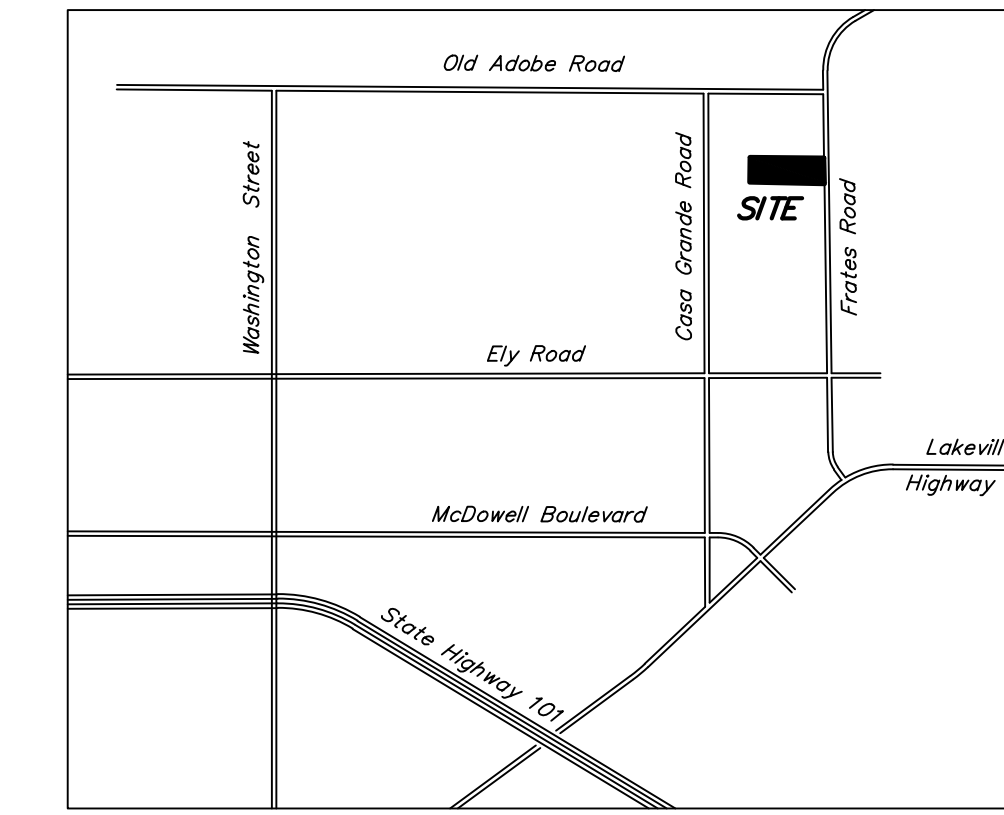


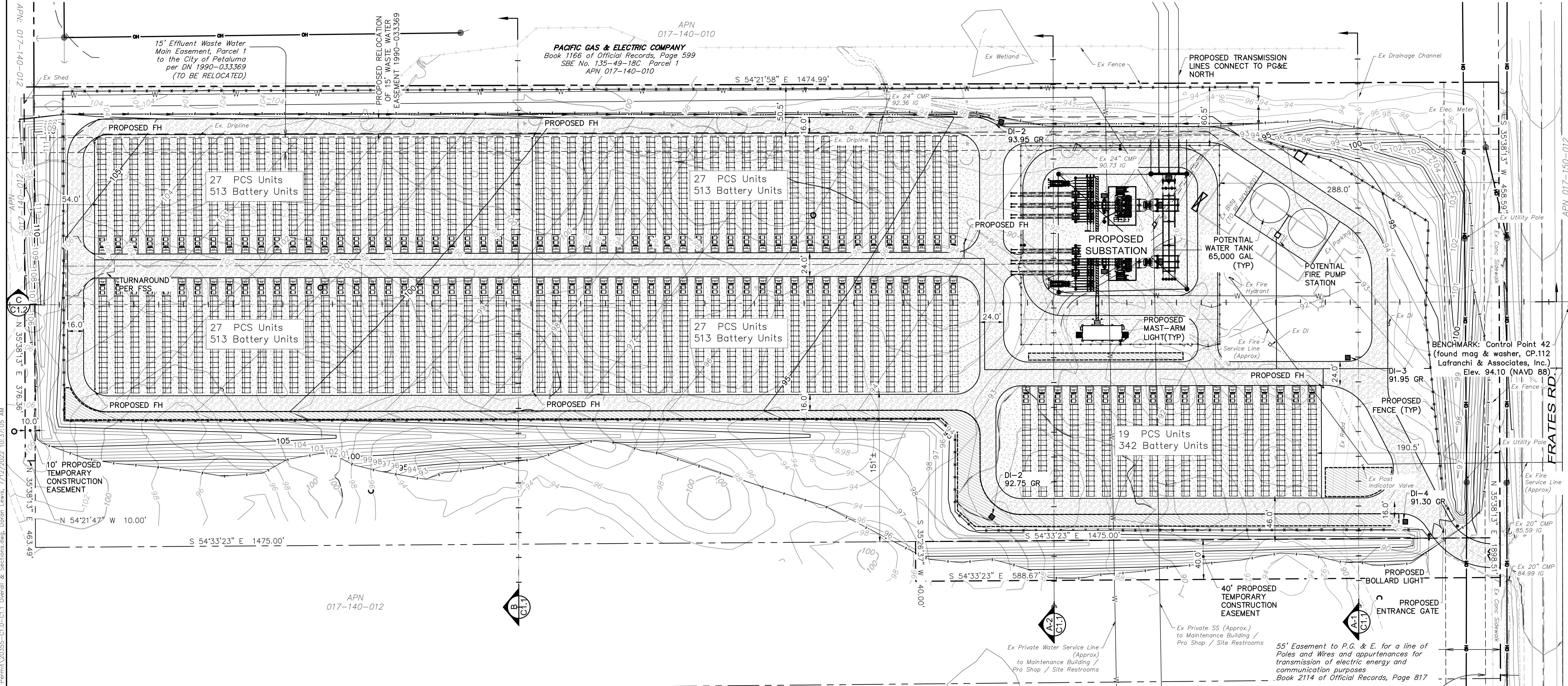
NORTH BAY ENERGY STORAGE OVERALL SITE PLAN

1901 Frates Road Road
Petaluma, California
APN 017-140-011 & 012, 017-050-006



SHEET INDEX

- C1.0 OVERALL SITE PLAN
- C1.1 SITE SECTIONS
- C1.2 SITE SECTIONS
- C2.0 GRADING & DRAINAGE PLAN
- C3.0 LIGHTING PLAN
- C4.0 TREE DISPOSITION PLAN
- C4.1 TREE INFORMATION MATRIX
- C5.0 WETLAND PROXIMITY MAP



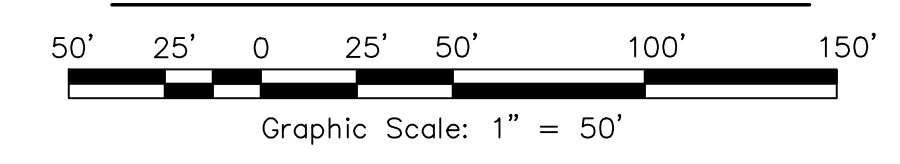
HATCHING LEGEND:

- GRAVEL ROAD
- GRAVEL PAD
- PLANTING BUFFER STRIP
- BIO-RETENTION AREA

BATTERY ENERGY STORAGE SYSTEM:

TOTAL PCS UNITS: 127
TOTAL BATTERY UNITS: 2,392

OVERALL SITE PLAN



OWNER INFO

BOLERO ENERGY STORAGE, LLC
800 TAYLOR STREET, SUITE 200
DURHAM NORTH CAROLINA, 27701
PHONE: (916) 960-6015
EMAIL: CRAMEY@STRATACLEANENERGY.COM

No.	Date	Description	Revisions

adobe associates, inc.
civil engineering | land surveying | wastewater
1220 N. Dutton Ave. Suite 200, Petaluma, CA 95401
P: (707) 541-2300 F: (707) 541-2301
Website: www.adobeinc.com
"A Service You Can Count On!"

Preliminary
David R. Brown, RCE 41833
My license expires 3/31/2024

**NORTH BAY ENERGY STORAGE
OVERALL SITE PLAN**
1901 Frates Road
Petaluma, California
APN 017-140-011 & 012, 017-050-006

SCALE: AS SHOWN
Date: June 29, 2022
Design by: ZR, DL
Drawn by: DL
Checked by: DRB

Sheet
C1.0
1 of 8 Sheets
Job 20355