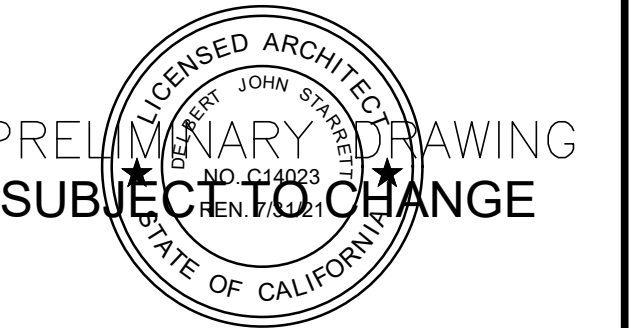


3663 NORTH LAUGHLIN ROAD, SUITE 207
 SANTA ROSA, CALIFORNIA 95403
 PHONE: (707) 526-9645

CONSULTANTS

SEAL



**NEILMED 2
 WAREHOUSE**
 LOT 7
 AVIATION BLVD
 SANTA ROSA, CA

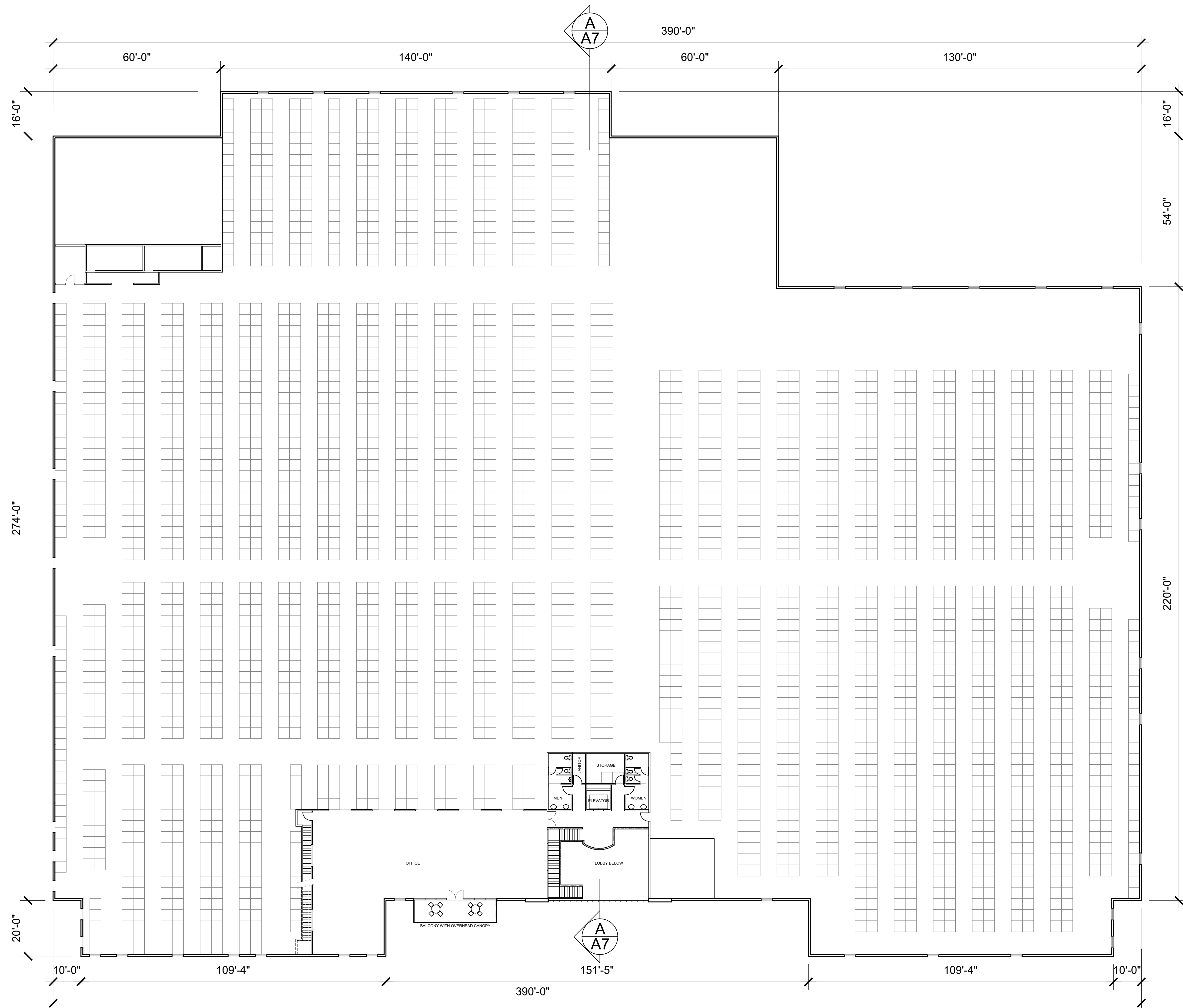
REV	DATE	DESCRIPTION
	10/1/21	FLOOR REDESIGN

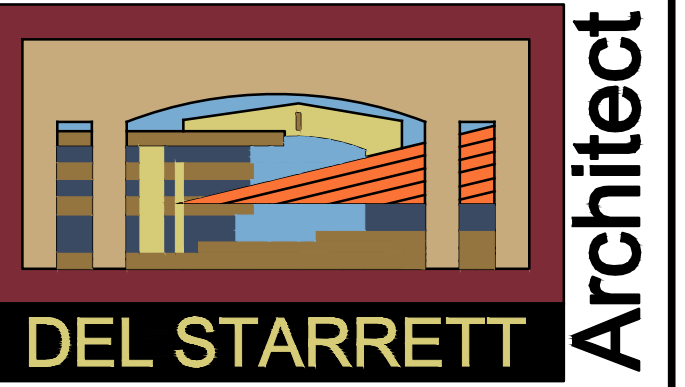
© Copyright 2020
 Del Starrett Architect

SHEET TITLE

UPPER FLOOR

SHEET NUMBER
A5

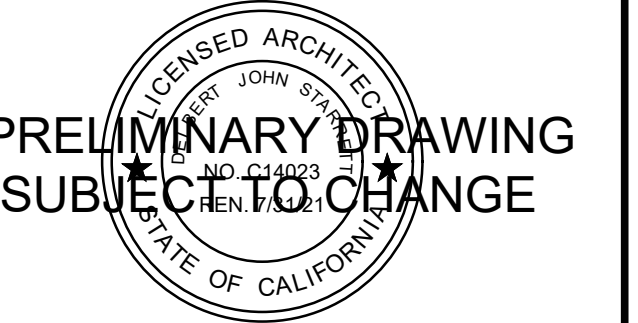




3663 NORTH LAUGHLIN ROAD, SUITE 207
 SANTA ROSA, CALIFORNIA 95403
 PHONE: (707) 526-9645

CONSULTANTS

SEAL



NEILMED 2 WAREHOUSE
 LOT 7
 AVIATION BLVD
 SANTA ROSA, CA

REV	DATE	DESCRIPTION
2/10/22		OMIT WEST ROLLUP DR
10/1/21		ELEVATION REDESIGN

PROJECT NO: 1904
 CAD DWG FILE: A6
 DRAWN BY: KCT
 SCALE: 1/16"=1'-0"

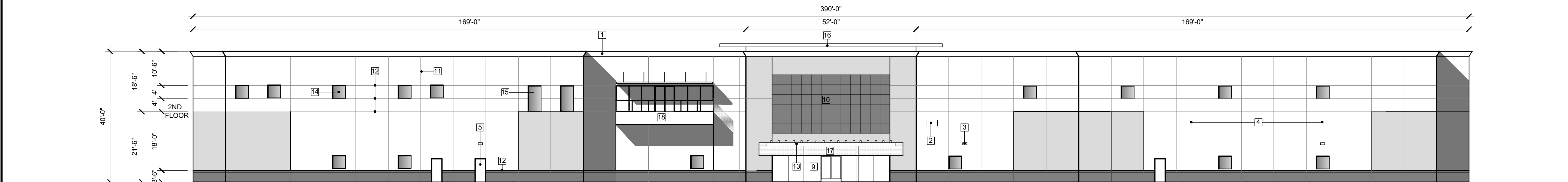
© Copyright 2020
 Del Starrett Architect

SHEET TITLE

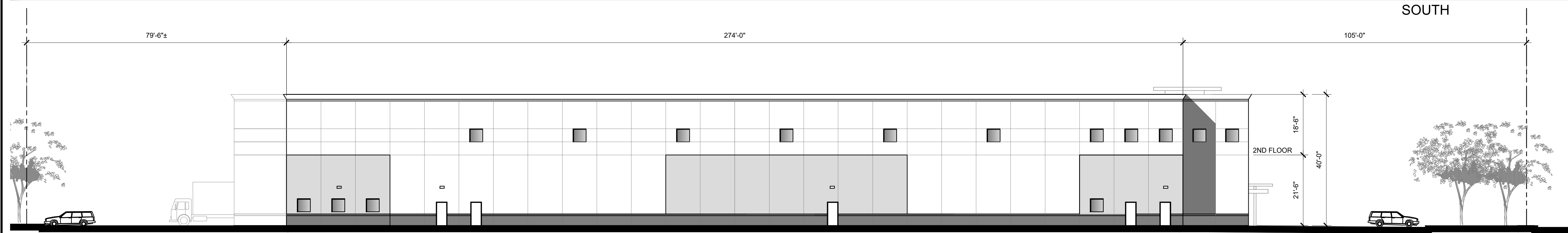
ELEVATIONS

SHEET NUMBER

A6

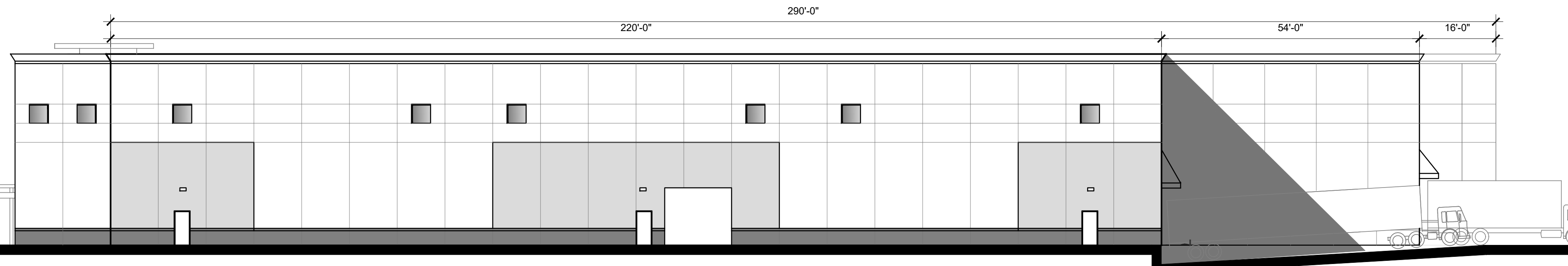


SOUTH

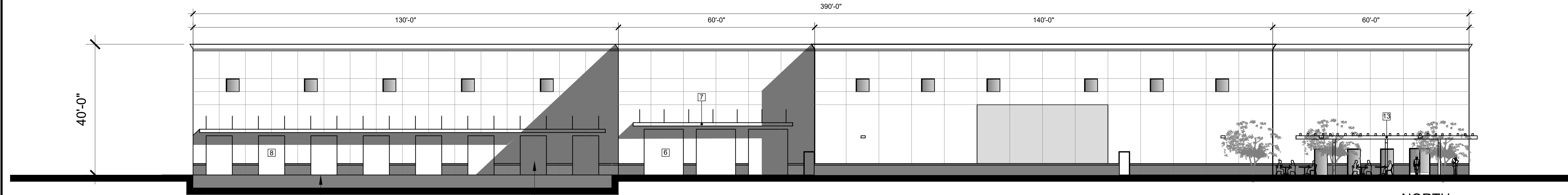


WEST

- LEGEND**
- 1 CORNICE
 - 2 12" ADDRESS SIGN EXTERNALLY ILLUMINATED
 - 3 WALL MOUNTED LIGHT SEE ELECTRICAL PLANS
 - 4 PRECAST CONCRETE PANEL TYPICAL
 - 5 METAL MANDOOR
 - 6 METAL SURFACE OVERHEAD DOOR
 - 7 METAL CANOPY
 - 8 METAL OVERHEAD DOORS AT RECESSED LOADING
 - 9 ENTRANCE STOREFRONT
 - 10 ALUM STOREFRONT WINDOWS
 - 11 CONCRETE PANEL VERTICAL JOINT
 - 12 HORIZONTAL REVEALS IN CONCRETE PANEL
 - 13 WOOD TRELLIS
 - 14 4x4 STOREFRONT WINDOWS
 - 15 4x8 STOREFRONT WINDOWS
 - 16 ALUMINUM TOP CAP ELEMENT
 - 17 ALUMINUM ENTRY CANOPY
 - 18 BALCONY WITH OVERHEAD CANOPY
- EXTERIOR COLOR SCHEDULE**
- TEX-COTE OVER PRECAST CONCRETE PANEL
 COLOR: BENJAMIN MOORE "NANTUCKET GRAY"
 - TEX-COTE OVER PRECAST CONCRETE PANEL
 COLOR: BENJAMIN MOORE "NANTUCKET GRAY"
 - TEX-COTE OVER PRECAST CONCRETE PANEL
 COLOR: BENJAMIN MOORE "PACIFIC BLUE"
 - CLEAR ALUMINUM STOREFRONT WITH
 CLEAR INSULATED GLASS
 - CLEAR ALUMINUM - SILVER METALLIC
 FACIA PANELS AT ENTRY CANOPY



EAST



NORTH

METAL ROLL UP DOORS
 LOADING DOCK

