

Report on monumenting of Section Corners of a portion of T6-R10 & T7-R10, M D B & M, bounded on the west by the Bodega Rancho; on the south by the Rancho Estero Americano, and on the east by the Rancho Canada de Jonive and the Rancho El Moline.

The original surveys were made under the direction of the General Land Office	
Bodega Rancho, started in July, 1857.	Variation used
Estero Americano, finished Feb, 1857	"
Rancho Canada De Jonive, beg Mar 1857	"
El Moline	"
Retrace Bodega Rancho	"
Subdivision T 7 N, R 10 W, beg Oct 1867	"
Subdivision T 6 N, R 10 W FinDec 1865	"

On Sheet 1 of the report is given above the line, bearings and distances as determined in surveys made 1941 to 1959, while below the line are these same courses as shown on photostats of the Government Records.

On sheets 2 to 14 incl are shown, for each section, bearings and distances between monuments set. All monuments were set, ties made to random lines, coordinates calculated, and from these the bearings and distances between monuments were calculated.

The control for the network of random lines was based on an observation on Polaris, near the SE corner of Sec 27-7-10, and that corner was given coordinates of N 50,000 and E 50,000. Used a $\frac{1}{2}$ ' transit on practically all of this work, with 200 and 300 foot tapes, depending on nature of terrain. The overall closures were well within the limits of Class C work, many would qualify for Third order. Where did not close within limits of Class C, checked and located the error. One was misreading a vertical angle; One was in calc. bearings on a west line, from north to south quadrant, and one was in either misreading or misrecording a distance; fortunately the errors were large enough to be readily located.

The field notes of the subdivision of T 7 N, R 10 W, record many places with a local variation of the magnetic needle; All the way from 1° W to 2 $\frac{1}{2}$ ° E. This seemingly is caused by varying deposits of iron in the clay shale, which underlies the most of this area.

An inspection of the calls against the actual distances will show that there is no uniformity as to errors in distances. Call attention to an error of one chain in the east line of S 27, which was carried across the Township, from the El Moline to the Bodega Rancho line.

Also it should be noted that the bearings between corners are uniformly about 4° out to the NW and to the S W. If Wahl had used 16°45' on the Subdivision, as he did on the retrace of the Bodega Rancho line, instead of 17°00' as he did, the lines would have been closer to normal.

This is a heavily timbered country; cut up by numerous ravines; The slopes will average about 20°, Slopes of 35° are common. Found one of -42° for 300 feet. the worst is the sharp ridges, where decent length of backsight is almost impossible to get.

Another drawback in this redwood country, is the rarity of instrument points where can get a shot on the sun, for check on azimuth, Generally can locate a point for Polaris observations, by running a random line to a clearing, but this adds to the cost.

Taking everything into consideration, rough country, lack of roads or trails, and especially the local attraction, it is a wonder that the work checks out as well as it does. Know from experience what it was like, as it was only 30 years later that started field work, but mine was in Monterey County, instead of in the Russian River country.

G. S. Abbott
G S Abbott, L S 2297.

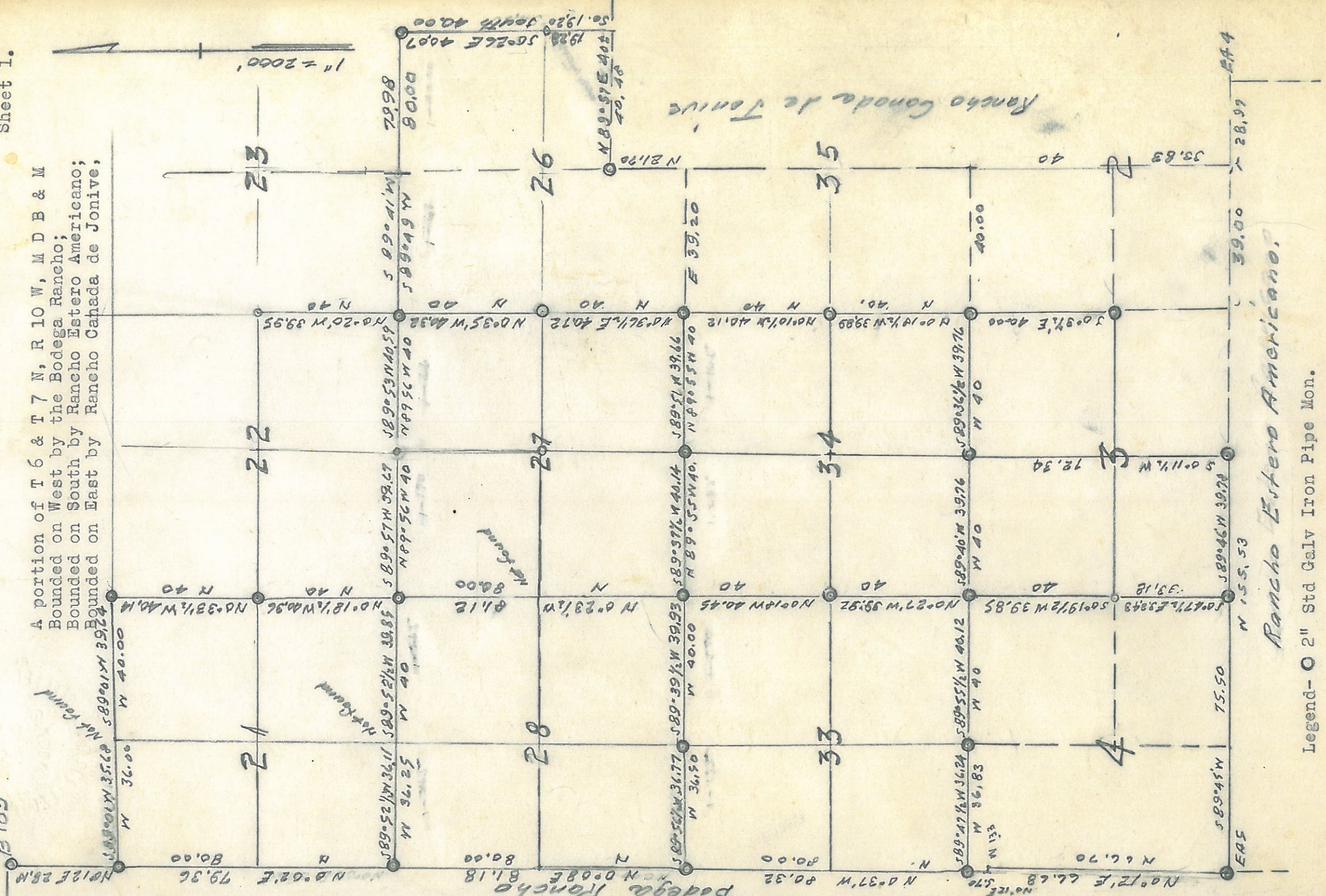
1.6

D747

B183

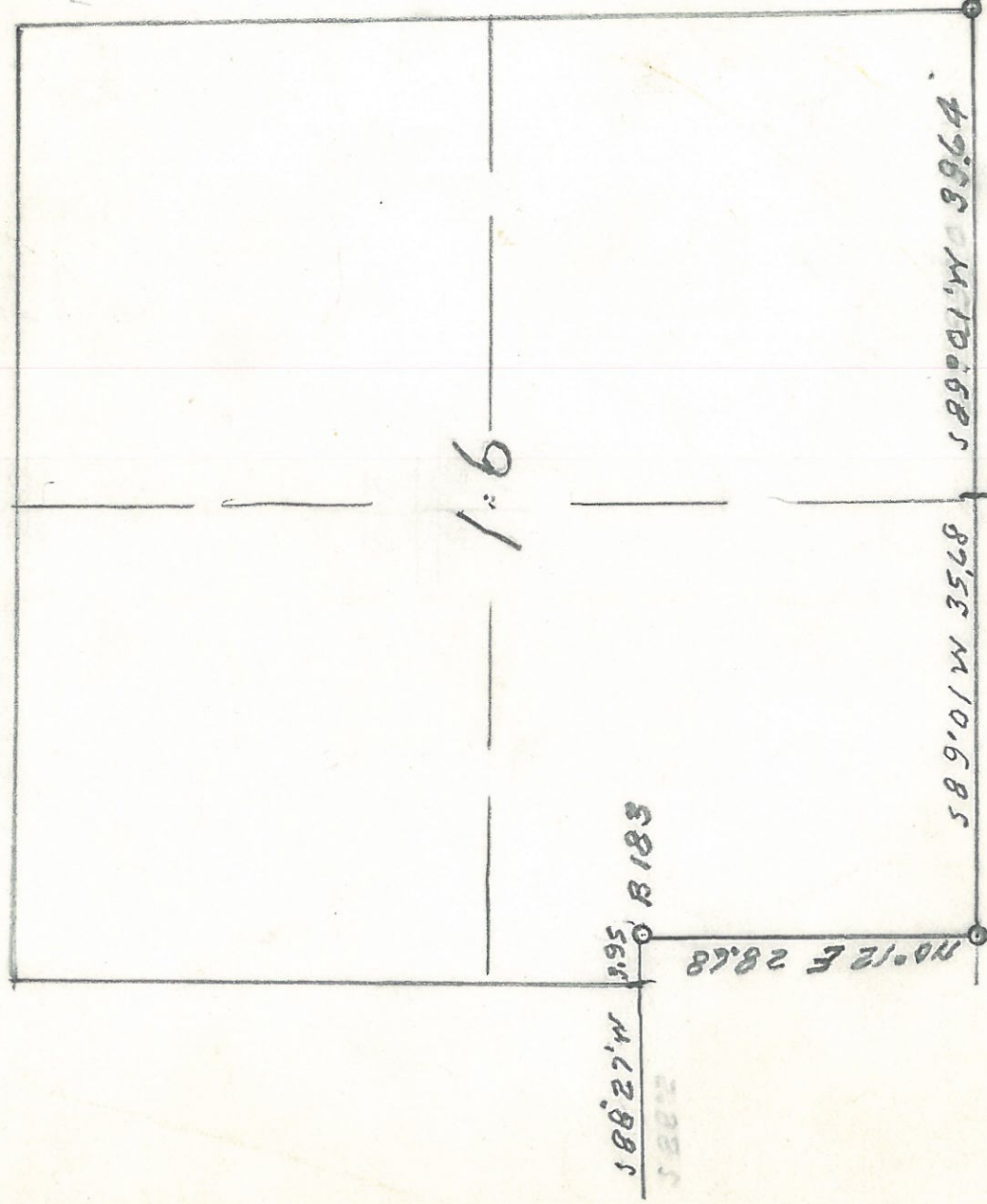
Sheet 1.

A portion of T 6 & T 7 N, R 10 W, M D B & M
 Bounded on West by the Bodega Rancho;
 Bounded on South by Rancho Estero Americano;
 Bounded on East by Rancho Cahada de Jonive;



Rancho Estero Americano.

Legend- O 2" Std Galv Iron Pipe Mon.



Sec 16, T 7 N, R 10 W, M D B & M.

After exhaustive search, found the northeast corner of the Bodega Rancho, a Redwood Stake marked B 183, in remains of a mound of stones, said stake being in a remarkably good state of preservation. Set Standard 2" I P in place of stake, which wired to pipe, and renewed mound of stones. On Barren hillside facing south, scattered brush and stunted trees, Stony porous ground, explaining preservation of stake. Located this point by triangulation from point above old NWP railroad tunnel. Used double base at B 183, as check on distance.

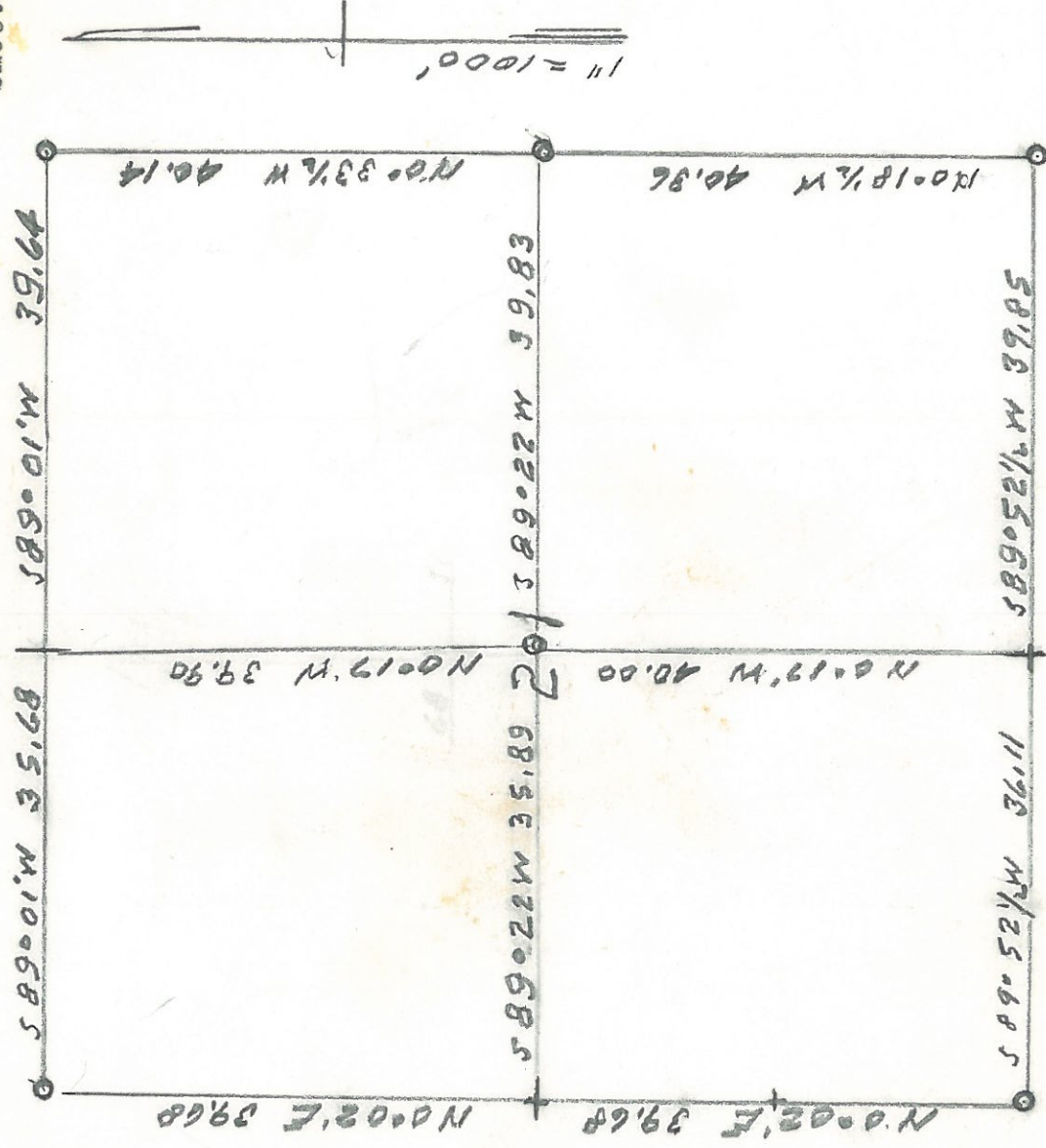
Frac Cor Sec 16-17 on BO Ro Line, Diligent search failed to reveal any trace of BT's. Distance from B 183 to Frac 17-18 proportioned as per instructions Bureau of Lands Instructions.

Frac Cor Sec 16-21, on BO Ro Line. Attempted to locate from data on N W P Railroad Map, The point thus located did not answer calls for Redwood BT. as no redwoods this location. Worked south until spotted redwood, then set temporary corner, and from this located the Live Oak BT. Using these trees, located frac corner as per calls for bearing and distance.

Note; Due to local attraction, made it a practice to use the angle between the called bearings, rather than either true or magnetic bearings,

Cor 16-15-21-22. Triangulated north from $\frac{1}{4}$ cor 21-22, to top ridge then east to calculated location; found well defined property fence corner, with fences north east and south. Diligent search failed to find BT's. Location answers calls for topog. under circumstances must accept as true corner. When later sent men to place Std I P. they found $1\frac{1}{2}$ " IP set probably by Walter Adams.

$\frac{1}{4}$ Cor Sec 16-21. Ran west from SE Cor, found remains old fence east & west, call for BT's two 4" live oaks (probably tan oaks) but exhaustive search failed to reveal any trace. Field notes show local variation of $\frac{1}{2}^{\circ}$ west and $1\frac{1}{2}^{\circ}$ east at points 15 chains apart, probably accounting for discrepancy in bearing of the line between Sec 16 and 21.



Sec 21, T 7 N, R 10 W, M D B & M.

Frac Cor Sec 21-28, on Bodega Rancho Line. In retracing East Line Bodega Rancho, after exhaustive search, found partly charred stake, on steep slope facing east; traced uphill until located suckers of destroyed Madrona; using this as guide, located remains of large oak, Set fractional corner on calls for these two BT's; calls for topog check as well as can be expected.

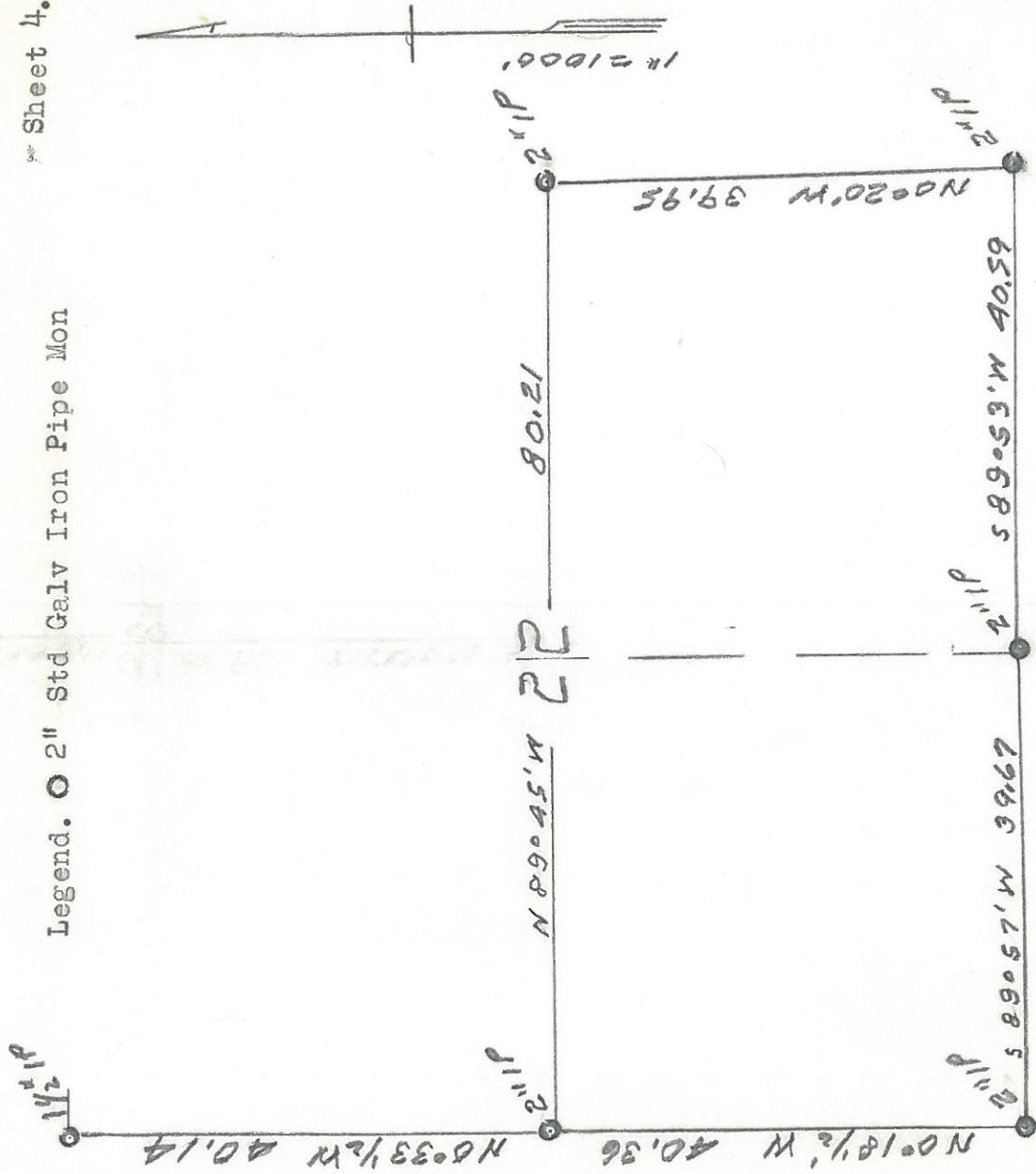
1/4 Cor Sec 21-28. Made two separate attempts to find this corner; Where call is for being set in opening, with two BT's, a live oak and a madrone, found only tan oak trees. Unable to locate either corner or remains of BT's. The calculated position used in locating center $\frac{1}{4}$ and $1/16$ corners, for property lines in this section. Check of calculated position of the Center $\frac{1}{4}$ corner, marked by a standard 2" IP, leads to belief that may be incorrectly placed. Remembrance is that saw an iron pipe mon. east of Mon set. Further checking is in order.

Cor Secs 21-22-27-28. Found Std 2" IP set by Ed Peugh; probably in 1920's; checks with calls in field notes.

1/4 Cor Secs 21-22. Found old stake at fence corner, probably set by Ed Peugh. Found both BT's which check for calls; In 1956 found 2" IP marked for corner 15-16-21-22, lying near the $\frac{1}{4}$ corner. Was never informed that due to incorrect marking, was never set.

My records show that a $1\frac{1}{4}$ " IP was set for the fractional $\frac{1}{4}$ cor of 21, on the Bo Ro Line, and a $1\frac{1}{4}$ " IP at the intersection of the S $1/16$ Sec line with the Bo Ro Line.

Legend. ○ 2" Std Galv Iron Pipe Mon



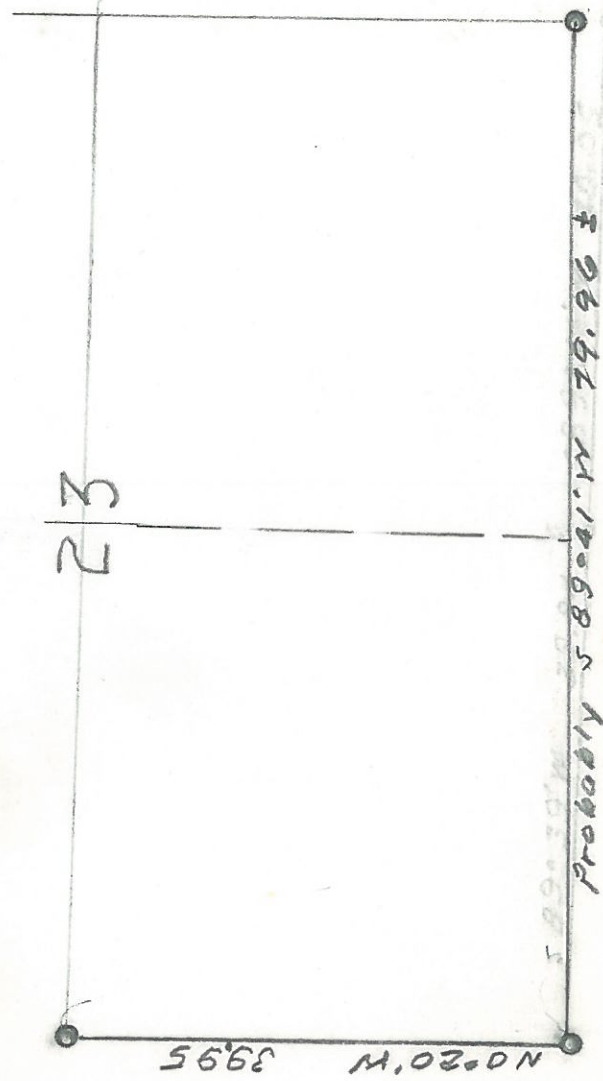
Section 22, T 7 N, R 10 W, M D B & M.

¼ Cor Sec 22-27. Triangulated from near the S E Cor Sec 22 to vicinity of probable location of the ¼ Cor, and found a well established fence corner, fences running south, east and west, which answers calls for topog immediate vicinity, but unable locate either of BT's called for. Accepted as correct location of ¼ corner.

Cor Sec 22-23 26-27. To find this corner, triangulated across from near the W 1/16 Cor of Secs 27-34, to near the tentative location. Checked for location of BT's, with no success; all over 2 chains from corner, and in cultivated fields. Interview with elderly residents developed that the public road, now known as Morelli Lane was established as 50 links wide, with the center at this point 25 links north of a well established R/W and property corner. Using the mean of said property fences, set 2" LP as Sec Cor, which all con- sulted decided was as near the original corner as it was now possible to re- locate same. Later calculations of position developed that this point was only 1.1 feet east of a point 81.04 chains due north of the SE corner of Sec 27.

¼ Cor Sec 22-23. In summer 1958 went to this corner, which was found by Dennis Morelli, in a resurvey of family lands, Found a redwood stake, marked "11.5 M", (2.5 Miles north of South line of Twp.) on the control line which was the basis of control in the subdivision of the TWP. from this point, using Magnetic variation of 19¼°, E, found depressions left by decaying trees in the exact location called for as the two BT's. This point in an east and west fence line only a few feet east of another fence running south. Set 2" LP replacing stake found, There also was a stake marked ¼ a short distance to the South, set by unknown persons.

The NE Cor of this section lies in an open field, and to date have made no attempt to locate it. nor the ¼ Corner of 15-22.

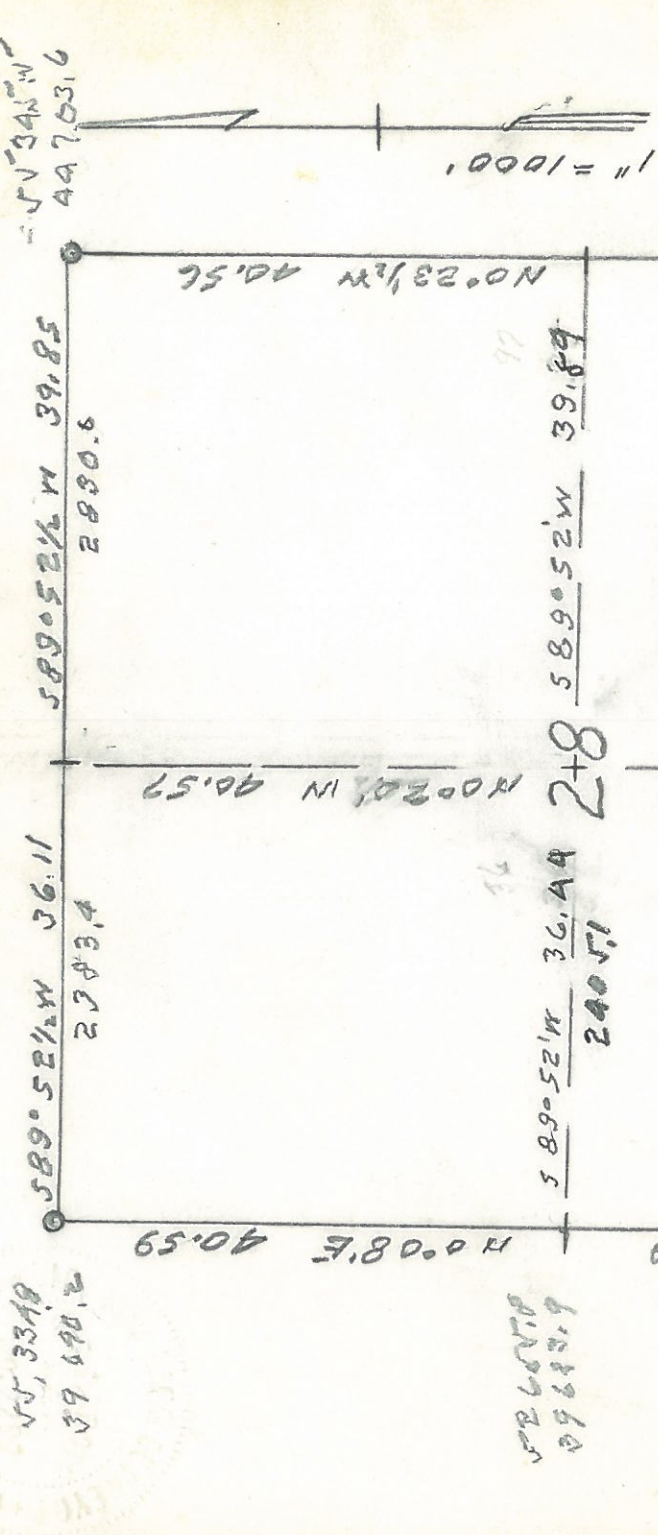


Sec 23, T 7 N, R 10 W, M D B & M.

¼ Cor 23-26. This ¼ corner is in the traveled way, Morelli Lane, and is defined as to easting by the existing fence and property line, with deed to the Pique Tract calling for its being 12 chains north of the S W corner of that tract, which would place it 25 feet north of the Nly R/W fence corner. Set 1" IP at that location, in road ditch, about 1943, but has now been destroyed by County road forces, who installed a road drainage culvert on ¼ section line. True location is probably some 23 feet north of the R/W fence corner.

Cor Secs 23-24-25-26. When the four 40's around the section corner were divided, the corner itself had not been found, and an arbitrary monument was set as a property corner, and deed descriptions were not tied to the Section Corner. The actual corner was found at a later date, consisting of a stake in the remains of a mound of stones, and from this stake two of the BT's listed were found, which checked for bearing and distance. Set standard 2" IP, and restored the mound of stones to Bureau of Lands Specifications.

Note. Before the ¼ and 1/16 corners on this line between Secs 23 and 26 can be located on the ground, it will be necessary to rerun the line between the section corners, came to this corner (23-24-25-26) on four loops, over a long period of time, and the closure at the corner leave its true position doubtful, as to bearing and distance from the SW Cor of 23. The deeds to properties in the S ½ of Sec 23 are based on monuments set in Morelli Lane, so that their relation to the True Section Line is of no real importance.



Section 28, T 7 N, R 10 W, M D B & M.

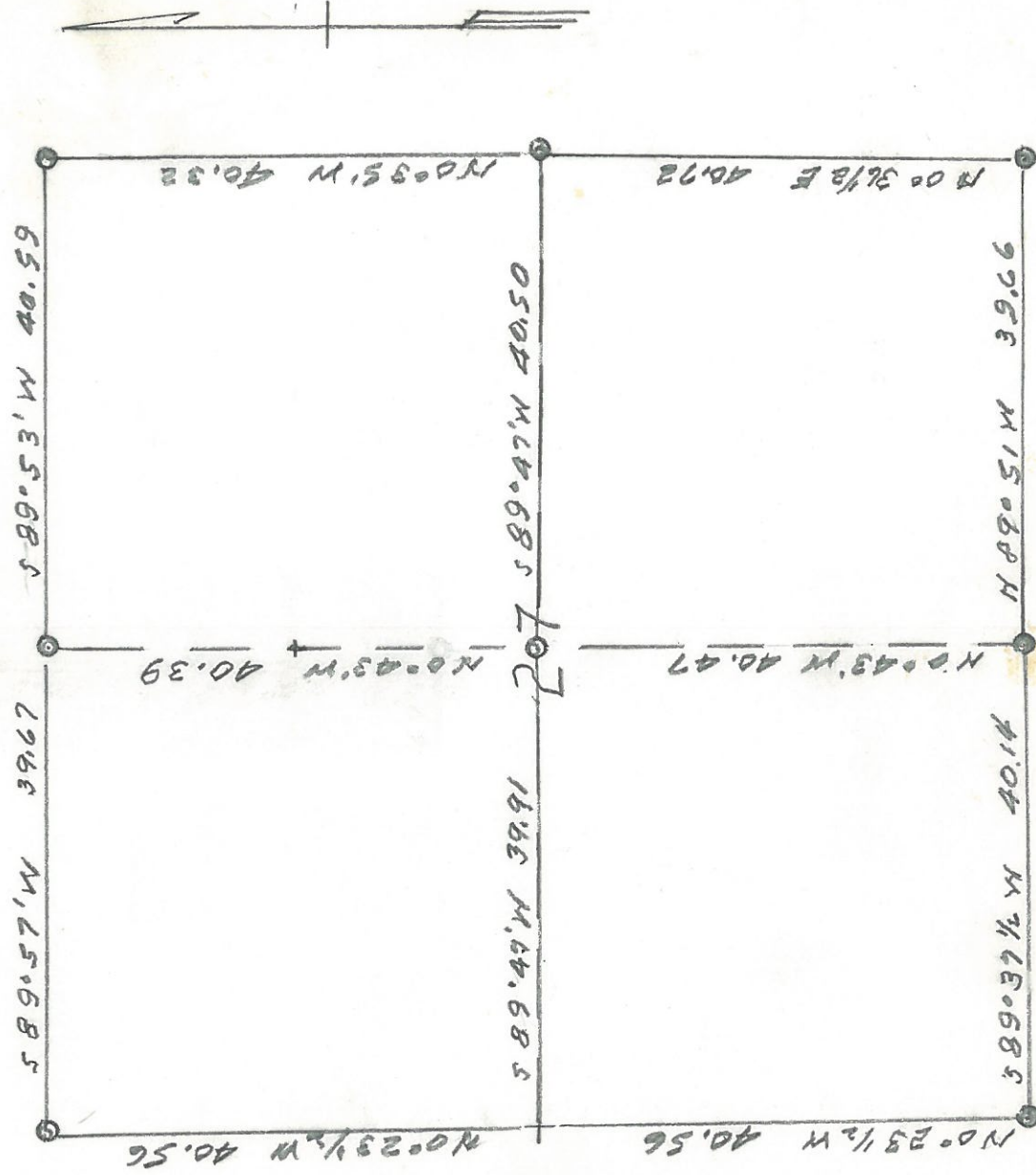
Frac Cor 28-33 on Bo Ro Line. This corner found, running south from M-12 on Willow Creek Road (Ridge Road) on calls in deeds. Found BT's and set 2" IP on Calls for bearing and distance, Topog checks immediate vicinity.

1/4 Cor 28-33. Located this corner, tentatively, from fence lines in vicinity; Used property fence line running east, and by using point on fence line produced 25 links from east line of road, located the remains of the redwood BT, No trace of apple tree marked as second BT. Set 2" IP on call bearing and distance from Redwood BT. Top IP 1/2 foot below road surface, Due to raising grade roadbed, now probably 1 1/2 to 2 feet below surface, Azimuth point; IP on south line Coleman Valley Road bears S 0° 14' 10" E, 478.6 feet.

Cor Secs 27-28-33-34. Came in from W 1/16 27-33. found only one of four BT's still standing, and reset corner on called bearing and distance from that live oak.

1/4 cor 28-27. Diligent search over the years has failed to find any trace of this corner, or the BT's. Lies in Subdivision of Second Addition to Camp Meeker, and probably destroyed during road building operations. Setting on ground would answer no useful purpose at this time.

Note. It seems improbable that the east line of this section was ever measured, or the error of one chain in north would have been picked up. If it was run at all, the probability is that was run north from the SE Cor, setting the 1/4 corner, then ranging through roughly for topog only.



Section 27, T 7 N, R 10 W, M D B & M.

1/4 Cor Secs 27-34. Located this corner, running east from W 1/16 Sec 27-34, found stump of redwood tree described as $\frac{1}{4}$ corner, and set 2" IP in center of stump as corner.

Cor Secs 27-26-34-35. Found iron bar described in deeds as marking corner. Probably set by Simonds, in place original stake, while BT's were in existence. Position agrees with deed calls for adjacent property.

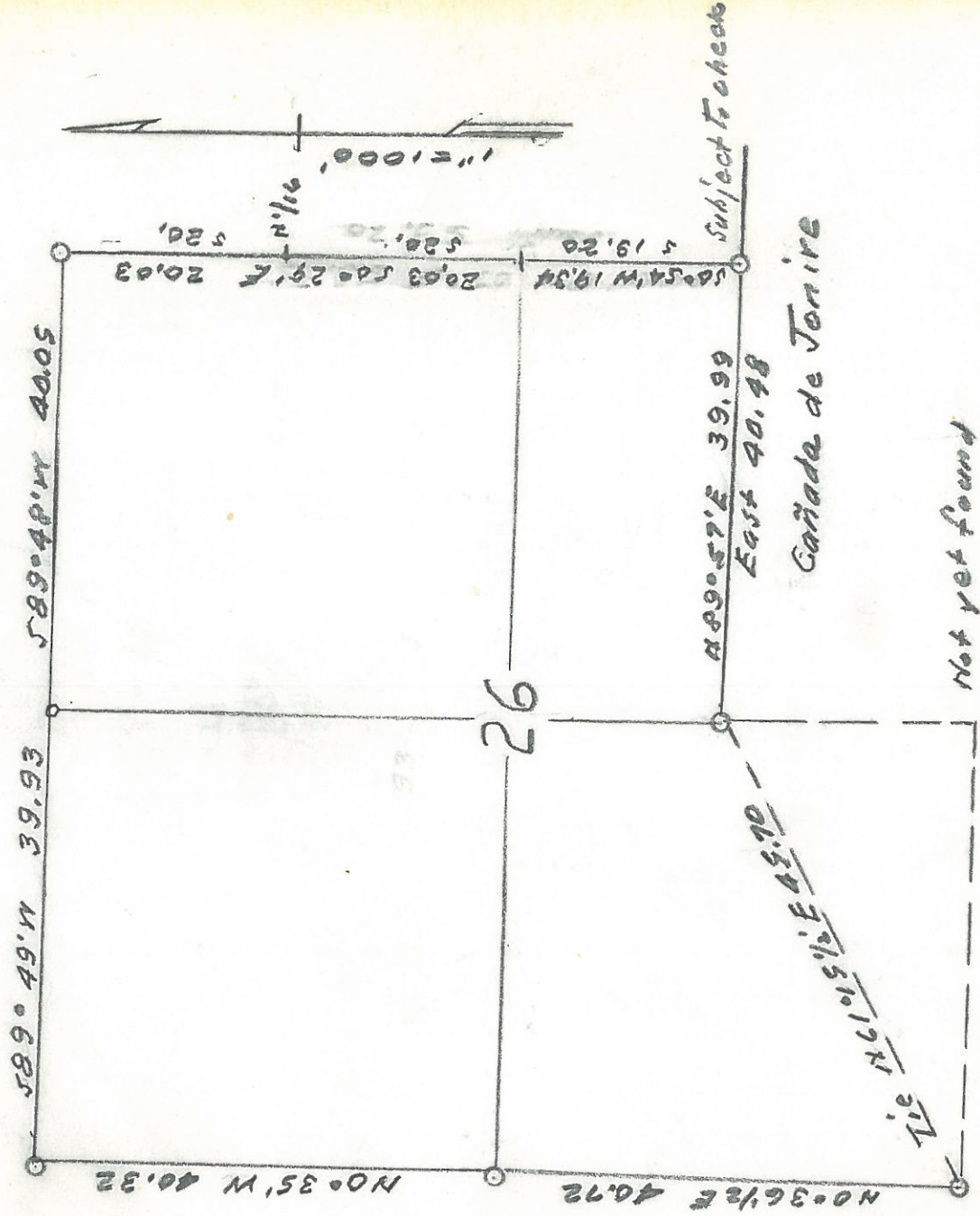
1/4 Cor Sec 27-26. This corner was identified by triangulation before its relative position in relation to other corners was determined. A 2" IP was set at a fence corner, a recognized property corner, where it would best answer calls to surrounding properties. Unable to locate either of BT's, as in immediate vicinity of Lapham buildings, and presumably long since destroyed. At a later date, after tabulating data from surveys, found that the distance between the SE and the NE corners of this section 27 was 81.04 ch. instead of the 80. chs. The $\frac{1}{4}$ corner as set, is N 40.72 chs from the SE Cor while Wohl described a fence line as north 40.71. the $\frac{1}{4}$ cor as set is also some 28 feet east of a straight line connecting the SE and the NE corners.

Center 1/4 Sec 27 This corner marked by 2" IP, set according to instructions Bureau Lands, Falls on projection of property line fence running west from $\frac{1}{4}$ cor 27-26.

N 1/16 Sec 27. Set 1" LP according to instructions. Fell in north and south fence line, but fell some 12.6 feet north of an IP supposed to mark the NE corner of Sylvania Heights.

NOTE. Any change in location of the $\frac{1}{4}$ Cor S 27-26 would only lead to trouble and would answer no useful purpose. The theoretical position would be 20 links south, and 42 links west of the $\frac{1}{4}$ corner as set; The Cen $\frac{1}{4}$ of S 27 would be 10 links S of the 2" IP marking the cen $\frac{1}{4}$ as set, and the N 1/16 Cor of S 27 would be 5 links south of the 1" IP set for that corner. which points as set all define property corners and lines.

Legend. 2" Std Galv Iron Pipe Mon.



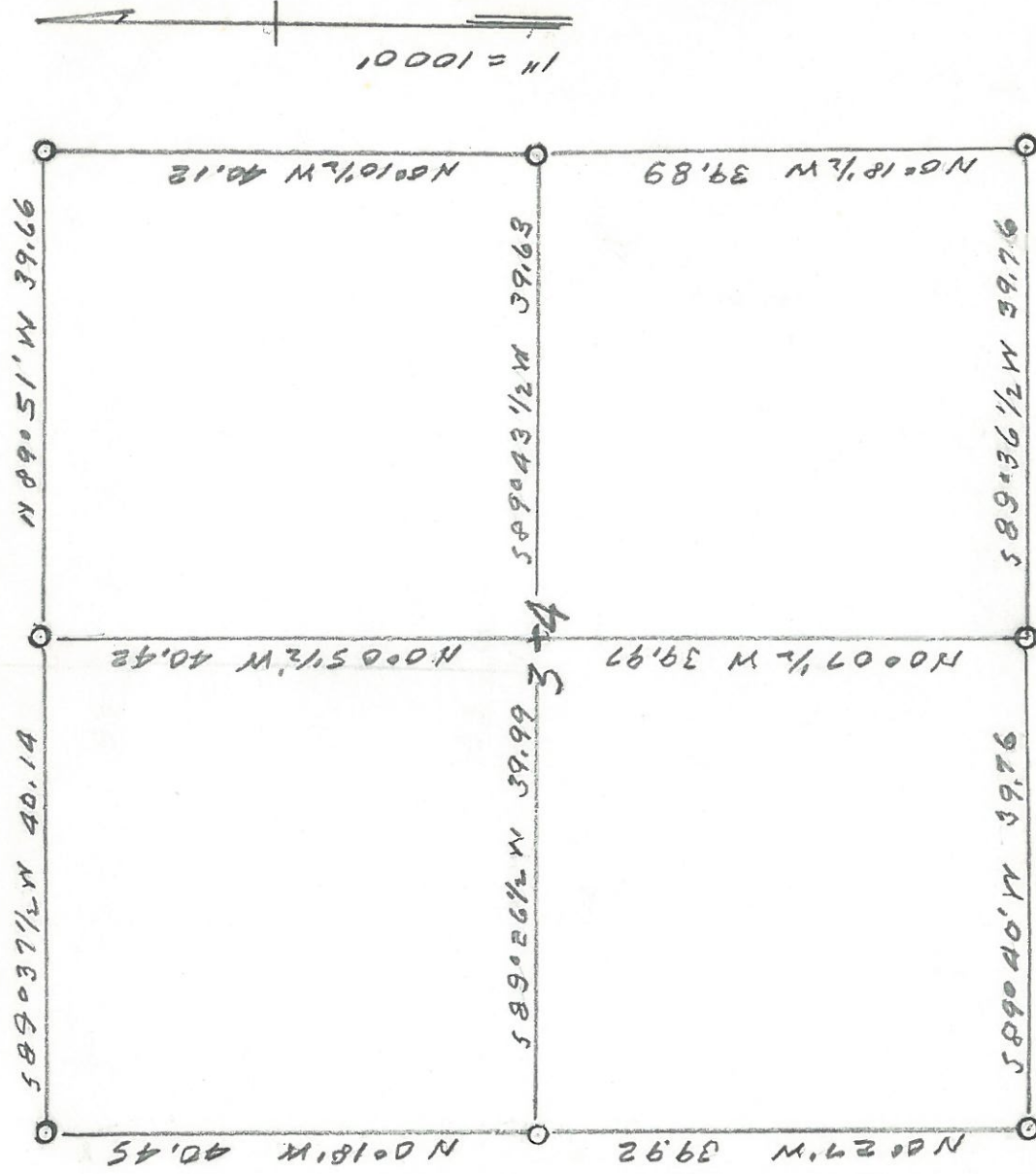
Frac Sec 26, T 7 N, R 10 W, M D BC & M.

The North and West Lines are described are described on Report of Sees 2727 22 and 23.

NW Corner of Rancho Canada de Jonive; Field Notes; "At 171.90 a post marked C J in field, from which the western edge of a pile of three rocks bears S 2 1/2° E 95 links dist. A rock bears S 72° E, 114 links dist." By using the remains of fences running south and east, set temporary cor. from which was able to identify the rocks called for. and set a 2" LP at a point which would, as near as possible, answer the calls for bearing and distance.

Frac Cor Sec 26-25, on CJ Line. After diligent search, found two trees which answered the calls for the B T s for this corner, by disregarding the calls for bearing except as general, and using only calls for distance, was able to locate this corner very close to its original position. When set the I P Mon at a later date, will make further check for local variation, and other calls. especially as no observable sign that the trees had ever been blazed..

1/4 Corner Secs 26-25 This corner fell in a cultivated field, and all trace of the original corner and B T s have long since disappeared. But the N 1/16 corner between 26 and 25 is firmly established by fences and a fence corner, which we can assume were placed to mark the 1/16 corner while the 1/4 corner was still in existence. We can therefore assume that by producing the line from the corner of 23, 24, 25 and 26, thru the N 1/16 corner of 26 and 25, an equal distance, on that line, we can establish the 1/4 corner in its original location. This also will not disturb any accepted property lines, as have existed for over 40 years without known dispute.



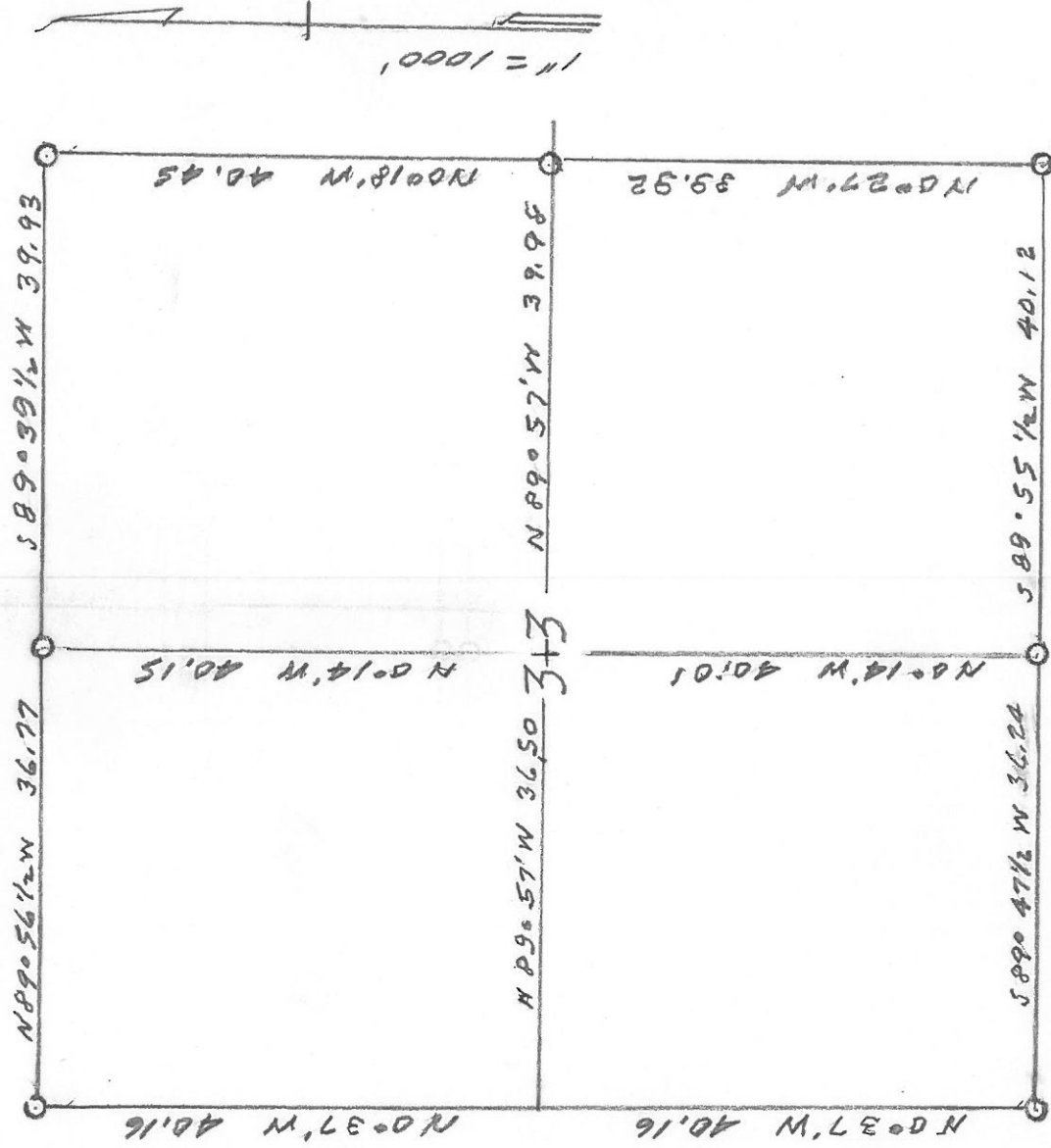
Section 34, T 7 N, R 10 W, M D B & M.

1/4 Cor Secs 34-35. Ran south from NE cor Sec 34; at 40.12 found well established fence and property corner. Unable to identify BT's called for, Later surveys confirmed point monumented with 2" IP, especially monuments found on line between Towns of Occidental and Howards.officially seperated by the 1/4 Section Line.

Cor Secs 34-35, 7-10 & 2-3, 6-10. My remembrance is that W H Williams made tie to the original corner, and his survey showed a tie to point on a redwood stump, which point was found and used in establishing this corner, as well as a tie to a madrona, which checked for distance Later surveys tend to confirm this location as correct. No original BT's were found when corner monumented.

1/4 Cor Sec 34-7-10 & Sec 3-6-10.. This corner fell in the traveled way of the Bittner Road, We identified the remains of a pepperwood BT, but not the redwood. Set 2" IP on call for bearing and distance from remains BT found, and confirmed by checks deed calls in immediate vicinity.

Gen 1/4 Sec 34: Found stake marking this corner, probably set by Cox when line between Towns of Occidental and Howards was established. Later IP was set in concrete by Walter Adams, which now marks corner.



Sec 33, T 7 N, R 10 W, M D B & M.

Triangulated across

Frac Cor 33 & 4, on Bo Ro Line, Fay Creek to Opening on lands Rico Calvi; then to vicinity corner, Found well defined fence and property corner. The fences running north, south and west. Set 2" IP at corner. The call for BT is "live oak 10", N 24 E, 80 chs, At 80 links looked for live oak, no sign. probably tan oak marked, and long since gone.

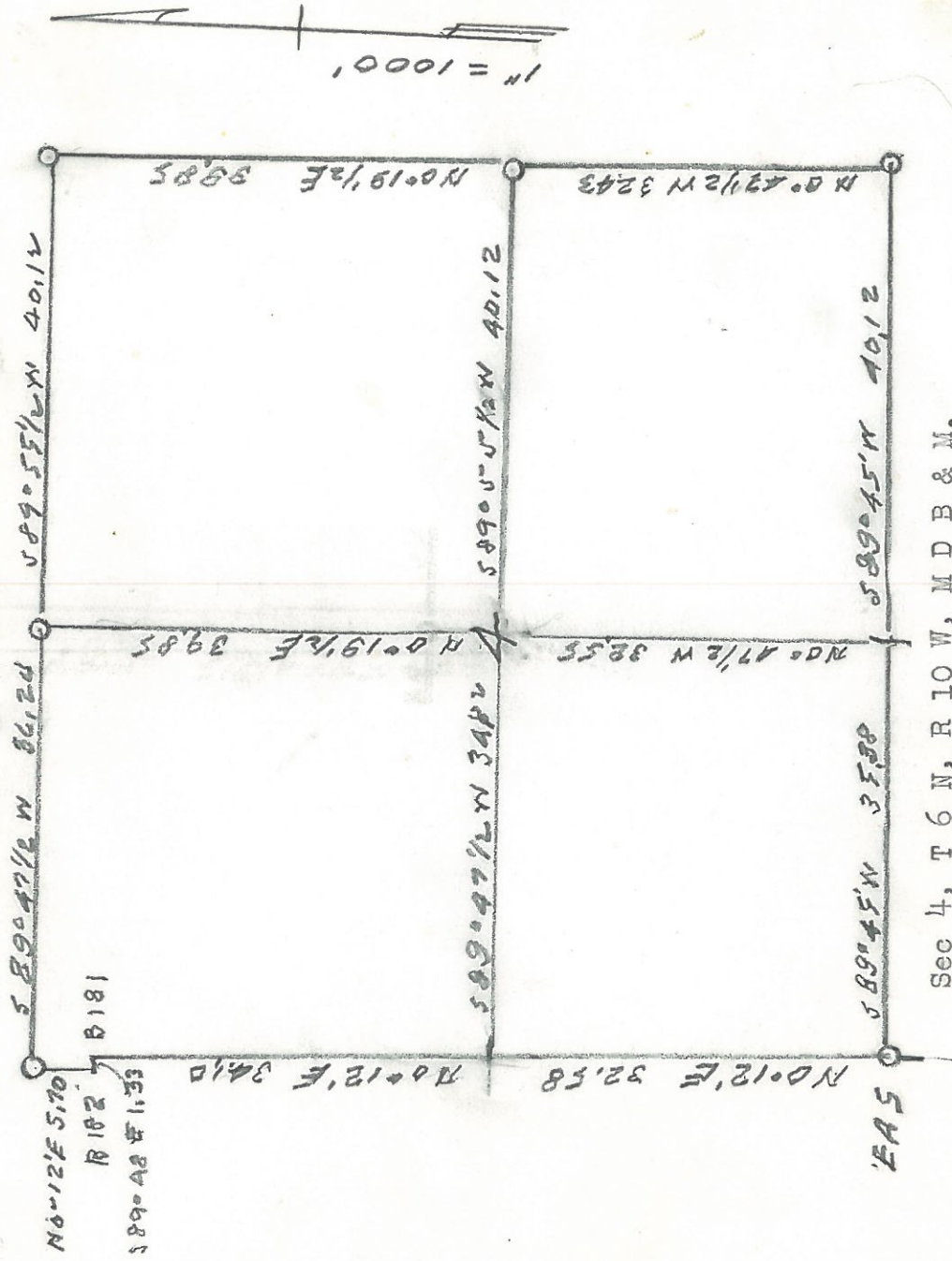
1/4 Cor Sec 33 & 4. Coming from east, was shown original 1/4 stake, in place, and checked for calls. Replaced with 2" IP Mon.

Cor Secs 33-34, 7-10 & Secs 3-4, 6-10. Ran west on random line from 1/4 cor 34-3 to IP property corner, 5 chains west of Sec Cor. From IP ran east 5¹/₂ ch line to 1/4 Cor, for tentative Sec Cor. From this point found one of the 4 BT's called for, and set 2" IP on called bearing and distance. Set 1941. Inspection in 1950 shows disturbed by dozier at 5 chains from prop cor. If to be used for any reason, location should be re-checked.

1/4 Sec Cor 33-34. Ran south from the NE corner of Sec 33, to near fence and property corner. Found both BT's, and set corner from them, at S 0° 15' E, 40.45 chs. Later made check bear & Dist, for location N 1/16 Sec 33-34, which also is Prop Cor.

Gen 1/4 Sec 33. Ran Random line from 1/4 cor 33-28 on Coleman Valley road and Joy Road to 1/4 cor 33-4. and set 1" IP, at the point of calculated straight line connecting the two 1/4 corners mentioned, where intersected by line from 1/4 cor 33-34 to the calculated position of fractional 1/4 cor on Bodega Rancho Line. Checked this location at later date, when ran the N & S cen line to locate property line, as fence dodged back and forth, off line as much as 25 links in places, Only explanation is that line was located, so as to miss one redwood to the right, the next to the left, etc, thus equally dividing timber, and leaving no large trees on line. Have observed other cases where this obviously was done.

Note According to the way the West line of this section, the Bodega Ro line, is fenced, it is impossible to arrive at any definite conclusion as to how, if ever, run by a surveyor. As far as can now determine from notes, Was originally run in summer 1857, var 16° E. Then Retraced in 1867, Var 16° 45'. Undoubtedly the two lines only coincided at original mile points, with probably line trees marked both lines, then when fenced, ran from line tree on one line, to line tree on other line. Seems logical.



Sec 4, T 6 N, R 10 W, M D B & M.

Frac SW Cor Sec 4, E A 5; The NW Corner of Rancho Estero Americano.

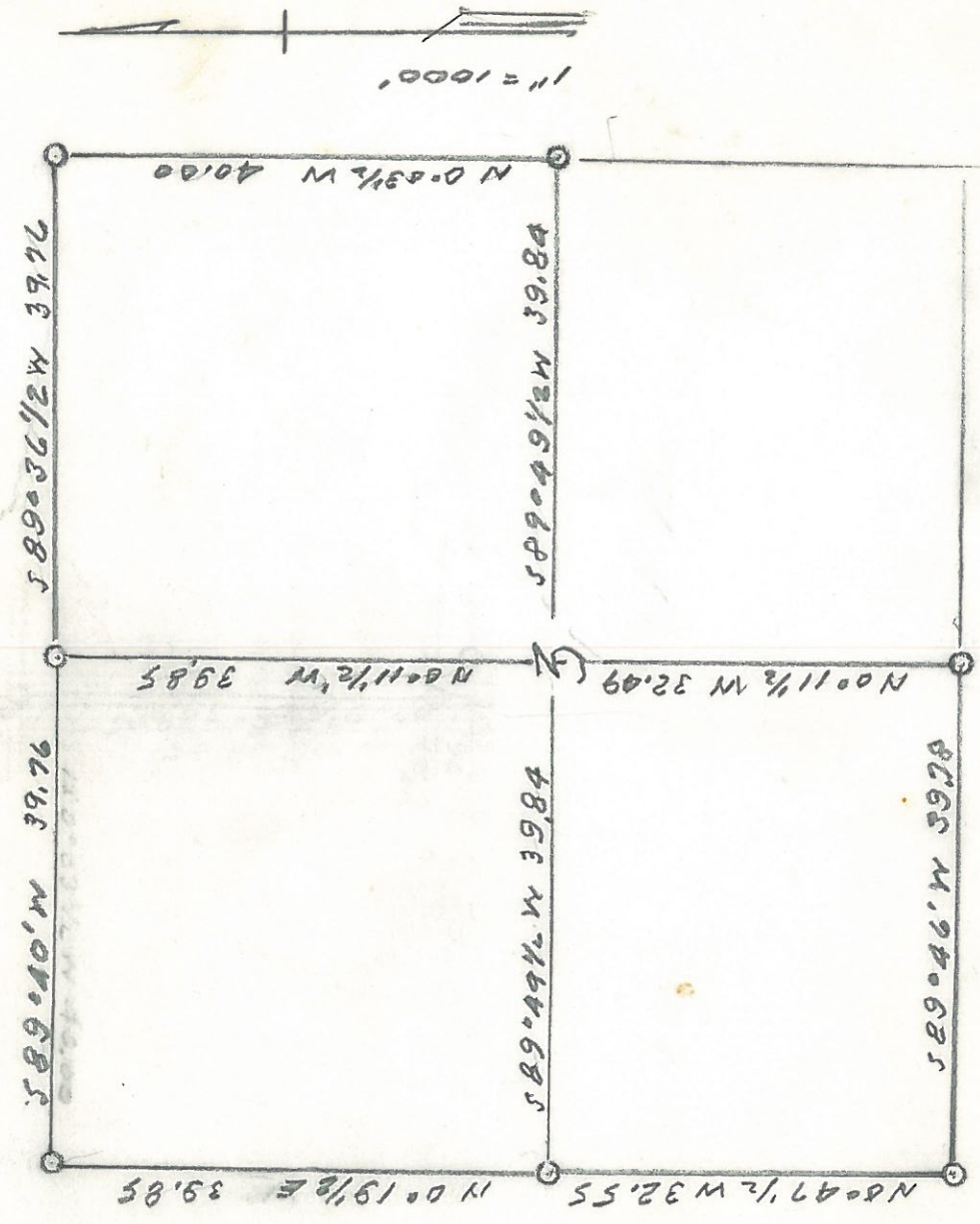
Came west to this corner, along the Taylor Road, checking on lot corners on the north line of The Redwood Tract, to calculated position of corner. Field notes listed two pines and an oak as BT's, The 5' pine had died, and was sawed off, plainly showing scar of blaze; The 3' pine had been felled and the stump rotted away, but leaving the heart of the stump intact. Using the blaze on the 5' stump, and the point where the blaze on the 3' stump should have been, 1.5' from center, set the corner, using angle between calls for bearings and called distances. Distances checked within fraction of link This shows definitely that Bigley did not take distance to center of link crown of roots as presently required, but to the center of Blaze. This is the first time have had confirmation of my belief that this was accepted practice in the 1850's and 1860's.

Frac Sec Cor of S 4, on E A Line. Found a fence corner, being a property cor and from this located the remains of one BT, and set corner according to call calls.

1/4 Cor Secs 3 & 4. Ran south from Bittner road, with property fence as guide, to tentative location, Search revealed remains of one BT, Set 1/4 cor as per calls, Fell close to fence corner.

Note: In subdividing this fractional section, made the east and west line through the center of section, parallel to the north line of the section, and the north and south line through the center, parallel to the east line of the section. This follows as close to the subdivision as shown on the Township Plat as is possible.

Note #2 The property line fence running south from the NW Cor, ignores the 1.33 chain offset at B 182, and continues south on a direct line. Search in spring 1958 failed to reveal any trace of BT's, for either B 182 or B 181, using both distance of 5.25 and 5.70 from frac corner.



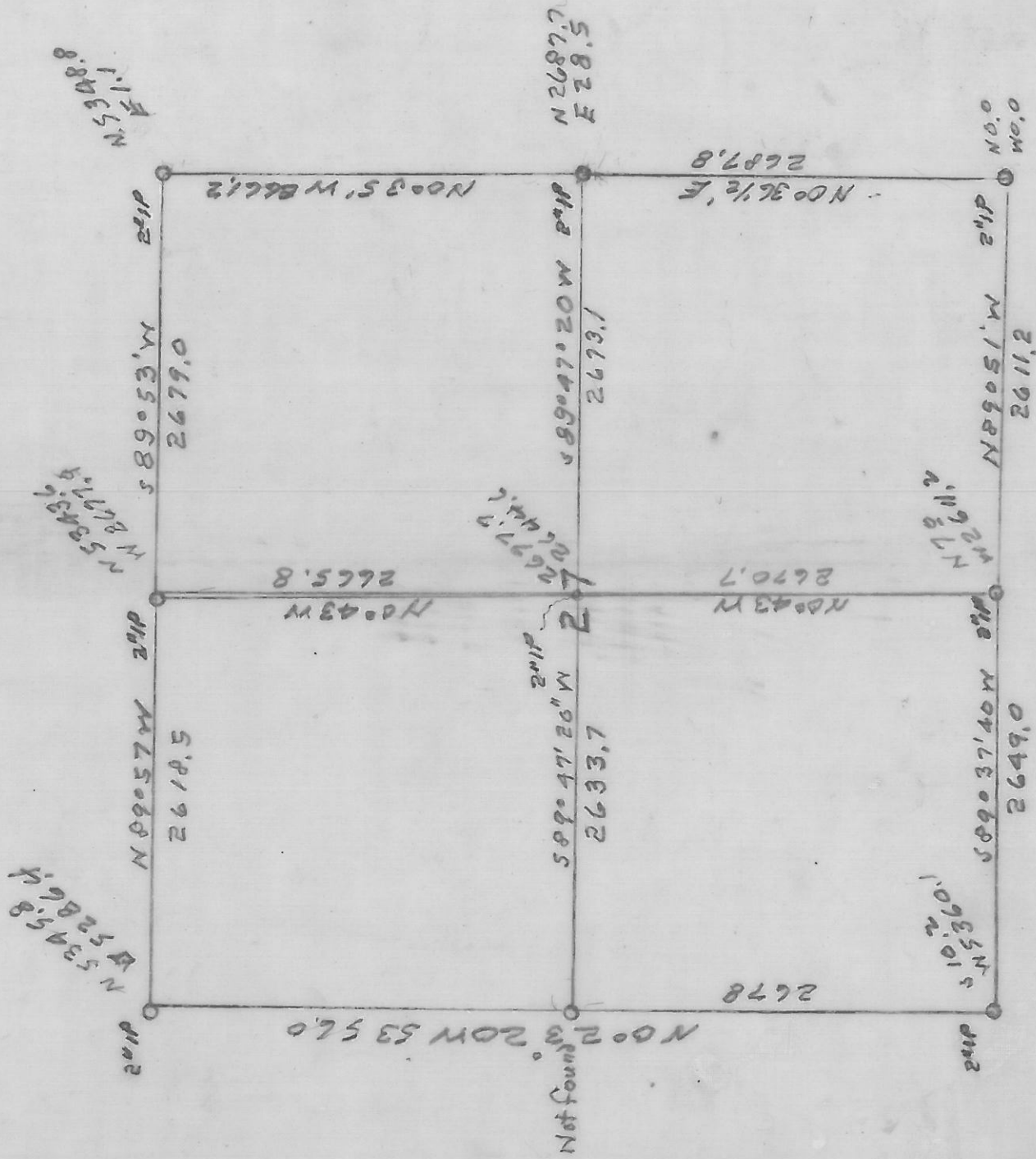
Sec 3, T 6 N, R 10 W, M D B & M.

1/4 Cor on E A Line Ran east on Americano Line, from SW Frac Cor, and found property fence corner, which checked for bearing on Rancho line. After search, casual, did not find corner between 3 & 2 on E A Line, so accepted fence corner as true corner. Further search is indicated.

1/4 Corner Sec 3 & 2. Ran south from NE Cor, and at 40 chains, in fence line, for tentative corner. Identified one B T positively, the other probable, which checked tentative location.

1/4 Sec 3. Calculated this position, according to instructions, and set either 2" or perhaps 1", IP. (Notes do not show which.)

Section 27-7-10, MDRB & M



Field Notes

Set post for Cor Secs 27, 24, 26 and 35
North between Secs 27 & 26

40.00 Set post for 1/4 Sec Cor from which bears
A black Oak 8" dia S 69° E 60 lbs

" " 10" " S 43 1/2° W 84 "

40.71 Hubberts Fence Course E & W
51.43 Picket Fence " " "

54.75 Dry Run 17 lbs wide " West

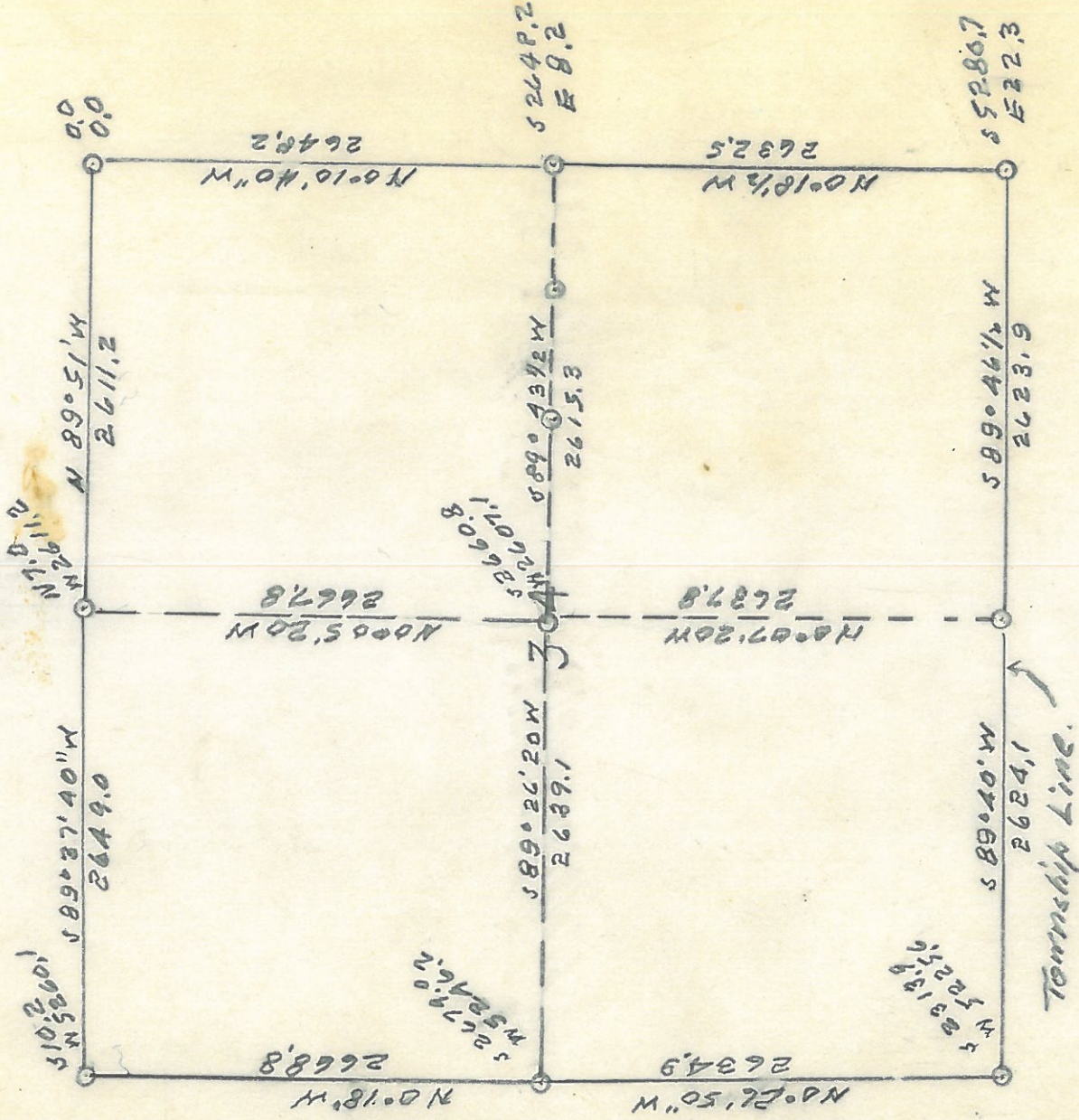
80.00 Set post for Cor Secs 27, 26, 22 & 23,

It appears that the fence line at 40.71 chs has been accepted as the 1/4 Section line, and the error in chaining was in the last 1/2 mile - i.e. North of the 1/4 Corner.

C.S.A. & Co.

252297

Sec 34 - 7 - 10 M D B & M



Started at NE Cor in 1941 - and over the years since ran south on E Bdry to S E Cor. West on So Bdry to SW Cor; N on West Bdry to NW Cor, and E on Td Line to N 1/4 - Ran West from E 1/4 thru Cen 1/4 to W 1/4 and North from S 1/4 thru Cen 1/4 to N 1/4. Then N to Hampton Rd - to Bohemian Rd sly to N line and East to R.O.B.

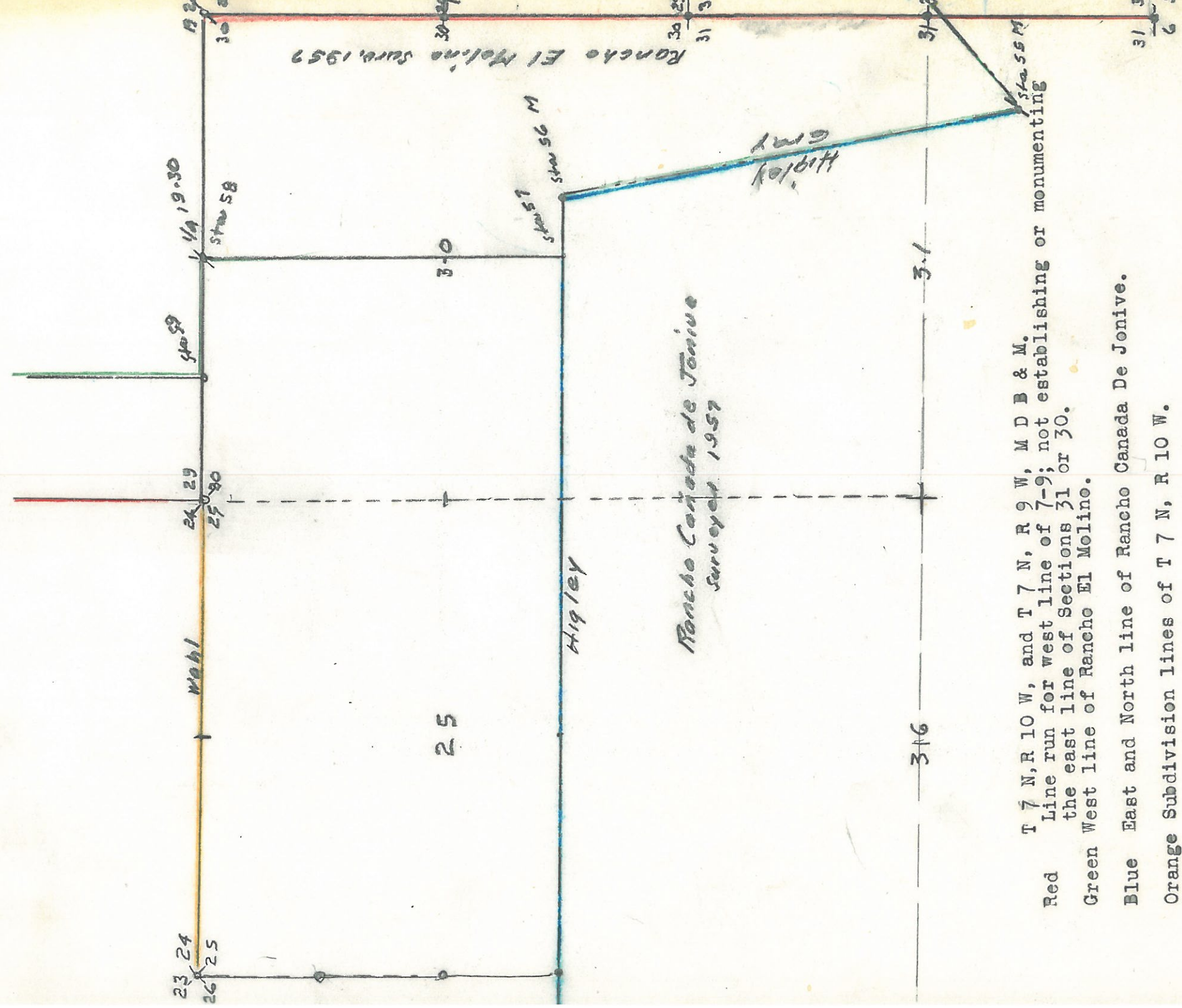
From closure on various random lines, estimate that the probable error of position at any corner is probably less than 1 foot.

It should be noted that the bearings are uniformly west of North and south of West. If Mohl had used a variation of 16° 45' E, as he did on the Bodege Rancho East Line, instead of 170° E, he would have had his lines nearer to True.

G. S. Abbott

252297

Type



T 7 N, R 10 W, and T 7 N, R 9 W, M D B & M.

Red Line run for west line of 7-9; not establishing or monumenting the east line of Sections 31 or 30.

Green West line of Rancho El Molino.

Blue East and North line of Rancho Canada De Jonive.

Orange Subdivision lines of T 7 N, R 10 W.

There seems to be no indication that the line between 25-7-10, and 30, 7-9 was ever run.

If can reestablish corner of 24-25-30-29, and the south or west line of Sec 29, can run south on a bearing compatible with those bearings, but using old established fence lines as final determinant.