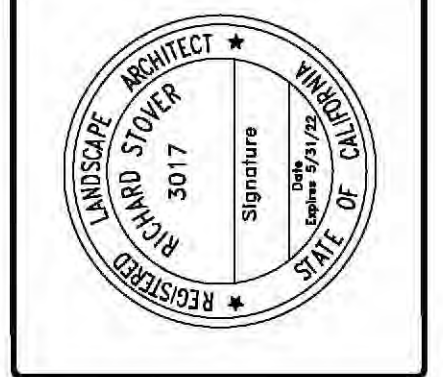


REVISIONS	BY

RW Stover & Associates, Inc.
 Landscape Architecture
 1620 North Main Street, Suite 4
 Walnut Creek, CA 94596
 Ph: 925.931.2583

INDUSTRIAL BUILDING
 COPPERHILL PARKWAY & BRICKWAY BLVD.
 SANTA ROSA, CALIFORNIA



PRELIMINARY
 LANDSCAPE PLAN

DRAWN	KD
CHECKED	RS
DATE	11-16-21
SCALE	
JOB NO.	
SHEET	L1
OF	X SHEETS

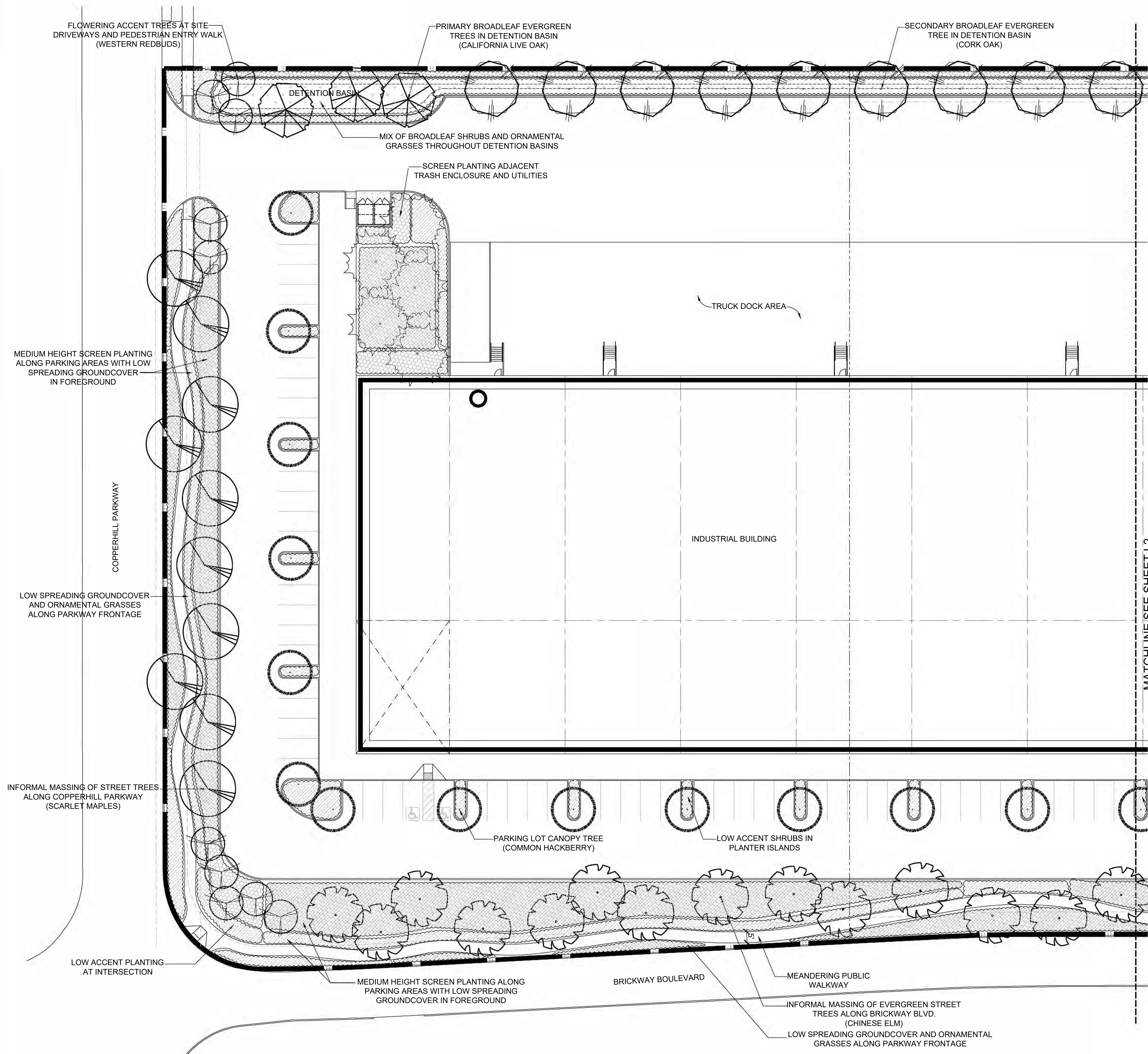
PRELIMINARY PLANT MATERIALS LIST:

BOTANICAL NAME	COMMON NAME	MATURE SIZE	WATER USAGE	SIZE
COPPERHILL PARKWAY STREET TREE: ACER RUBRUM	SCARLET MAPLE	60'x30'	MED	15 GAL.
SITE EVERGREEN CONIFER TREE: CEDRUS DEODARA	DEODAR CEDAR	80'x35'	LOW	15 GAL.
PARKING LOT CANOPY TREE: CELTIS SINENSIS	COMMON HACKBERRY	40'x40'	MED	15 GAL.
ENTRY FLOWERING ACCENT TREE: CERCIS OCCIDENTALIS (STD)	WESTERN REDBUD	10'x10'	LOW	15 GAL.
MINOR BROADLEAF EVERGREEN TREE: LAURUS NOBILIS 'SARATOGA'	SARATOGA LAUREL	20'x20'	LOW	15 GAL.
PRIMARY BROADLEAF EVERGREEN TREE: QUERCUS AGRIFOLIA	CALIFORNIA LIVE OAK	40'x40'	LOW	15 GAL.
SECONDARY BROADLEAF EVERGREEN TREE: QUERCUS SUBER	CORK OAK	40'x40'	LOW	15 GAL.
BRICKWAY BLVD. EVERGREEN STREET TREE: ULMUS PARVIFOLIA	CHINESE ELM	50'x50'	MED	15 GAL.
LARGE SCREENING PERIMETER SHRUBS: 'ARCTOST. 'HOWARD MCMINN' FRAGULA CALIFOR. 'EVE CASE' 'NERIUM OLEAN. 'PETITE SALMON' 'HETEROMELES ARBUTIFOLIA	MCMINN MANZANITA COFFEEBERRY DWARF OLEANDER TOYON	6'x8' 5'x8' 5'x6' 6'x8'	LOW LOW LOW LOW	5 GAL. 5 GAL. 5 GAL. 5 GAL.
MEDIUM HEIGHT SHRUBS: 'ARCTOSTAPHYLOS 'HARMONY' ECHIUM FATUOSUM LANTANA 'CONFETTI' RHAPHIOLEPIS 'JACK EVANS' TEUCRIUM FRUT. 'COMPACTA' WESTRINGIA FRUTICOSA	MANZANITA PRIDE OF MADIERA LANTANA PINK INDIA HAWTHORN COMPACT GERMANDER COAST ROSEMARY	4'x5' 4'x6' 4'x4' 4'x4' 3'x4' 4'x5'	LOW LOW LOW LOW LOW LOW	5 GAL. 5 GAL. 5 GAL. 5 GAL. 5 GAL. 5 GAL.
LOW SPREADING GROUND COVERS: 'ARCTOSTAPHYLOS 'EMERALD CARPET' DROSANTHEMUM FLORIBUNDUM LANTANA MONTEVIDENSIS PERSICARIA CAPITATA ROSMARINUS 'HUNTINGTON BLUE'	MANZANITA CARPET ROSEA ICE PLANT TRAILING LANTANA KNOTWEED ROSEMARY	1'x4' 0.5'x2' 2'x6' 0.5'x4' 30" x 8"	LOW LOW LOW LOW LOW	1 GAL. 1 GAL. 1 GAL. 1 GAL. 1 GAL.
BASIN ORNAMENTAL GRASSES: 'CAREX DIVULSA 'CHONDROPETALUM TECTORUM 'JUNCUS PATENS 'MUHLENBERGIA RIGENS 'MIMULUS AURANTIACUS 'MUHLENBERGIA CAPILLARIS 'STIPA PULCHRA	BERKELEY SEDGE CAPE RUSH CALIFORNIA GRAY RUSH DEER GRASS STICKY MONKEY FLOWER PINK MUHLY GRASS PURPLE NEEDLE GRASS	2'x2' 2'x3' 2'x1' 4'x5' 3'x3' 3'x4' 4'x5'	LOW LOW LOW LOW LOW LOW LOW	1 GAL. 1 GAL. 1 GAL. 5 GAL. 5 GAL. 5 GAL. 5 GAL.

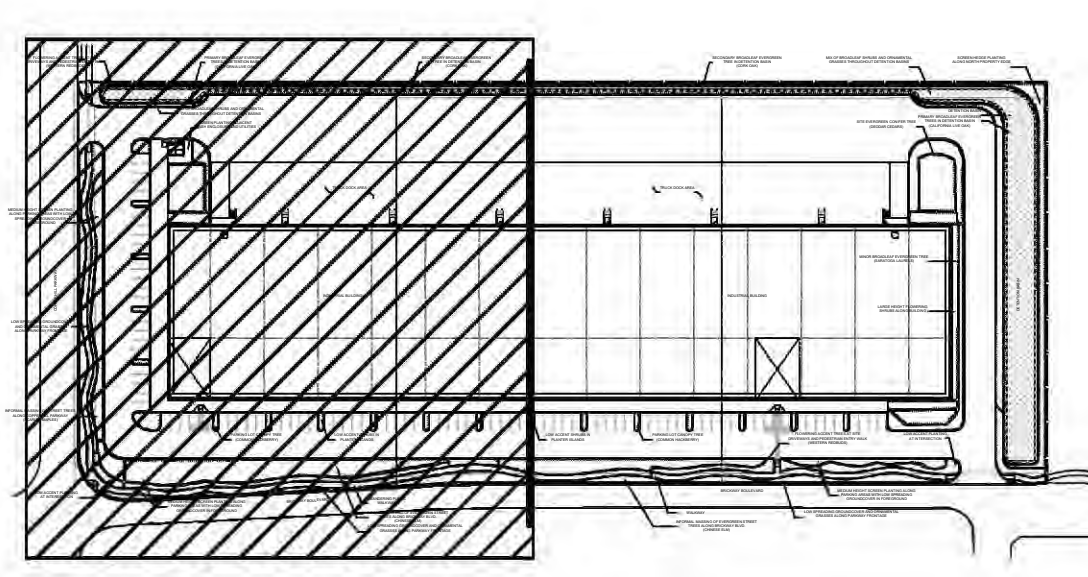
(*) DENOTES PLANT SPECIES COMPATABLE WITH DETENTION BASIN CONDITIONS PER SONOMA BEST MANAGEMENT PRACTICE FOR STORMWATER TREATMENT.

GENERAL NOTES:

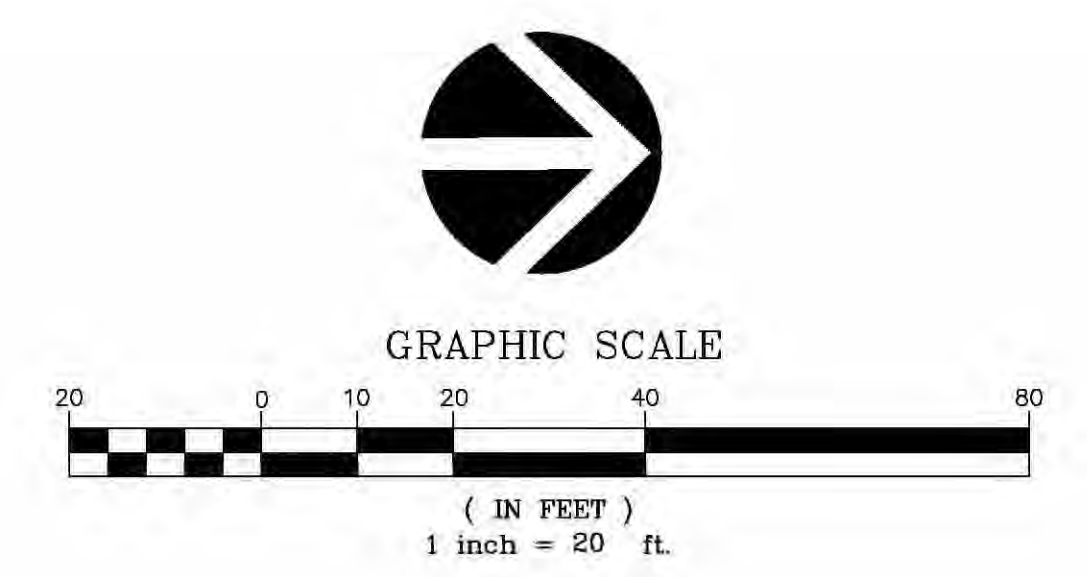
1. ALL PLANTING SHALL BE WATERED BY FULLY AUTOMATIC, WATER-CONSERVING IRRIGATION SYSTEM.
2. ALL PLANTING AREAS SHALL RECEIVE A 3" LAYER OF FIRBARK MULCH DRESSING.



MATCHLINE SEE SHEET L2



SITE MAP



REFER TO SHEET L3 FOR PLANTING DETAILS, WELO CALCULATIONS AND PLANT IMAGES

TREES:



COPPERHILL PARKWAY STREET TREE:
ACER RUBRUM
(SCARLET MAPLE)



SITE EVERGREEN CONIFER TREE:
CEDRUS DEODARA
(DEODAR CEDAR)



PARKING LOT CANOPY TREE:
CELTIS SINENSIS
(COMMON HACKBERRY)



ENTRY FLOWERING ACCENT TREE:
CERCIS OCCIDENTALIS
(WESTERN REDBUD)



MINOR BROADLEAF EVERGREEN TREE:
LAURUS NOBILIS 'SARATOGA'
(SARATOGA LAUREL)



PRIMARY BROADLEAF EVERGREEN TREE:
QUERCUS AGRIFOLIA
(CALIFORNIA LIVE OAK)



SECONDARY BROADLEAF EVERGREEN TREE:
QUERCUS SUBER
(CORK OAK)



BRICKWAY BLVD. EVERGREEN STREET TREE:
ULMUS PARVIFOLIA
(CHINESE ELM)

WATER EFFICIENT LANDSCAPE WORKSHEET

REFERENCE EVAPOTRANSPIRATION (ET₀): 42

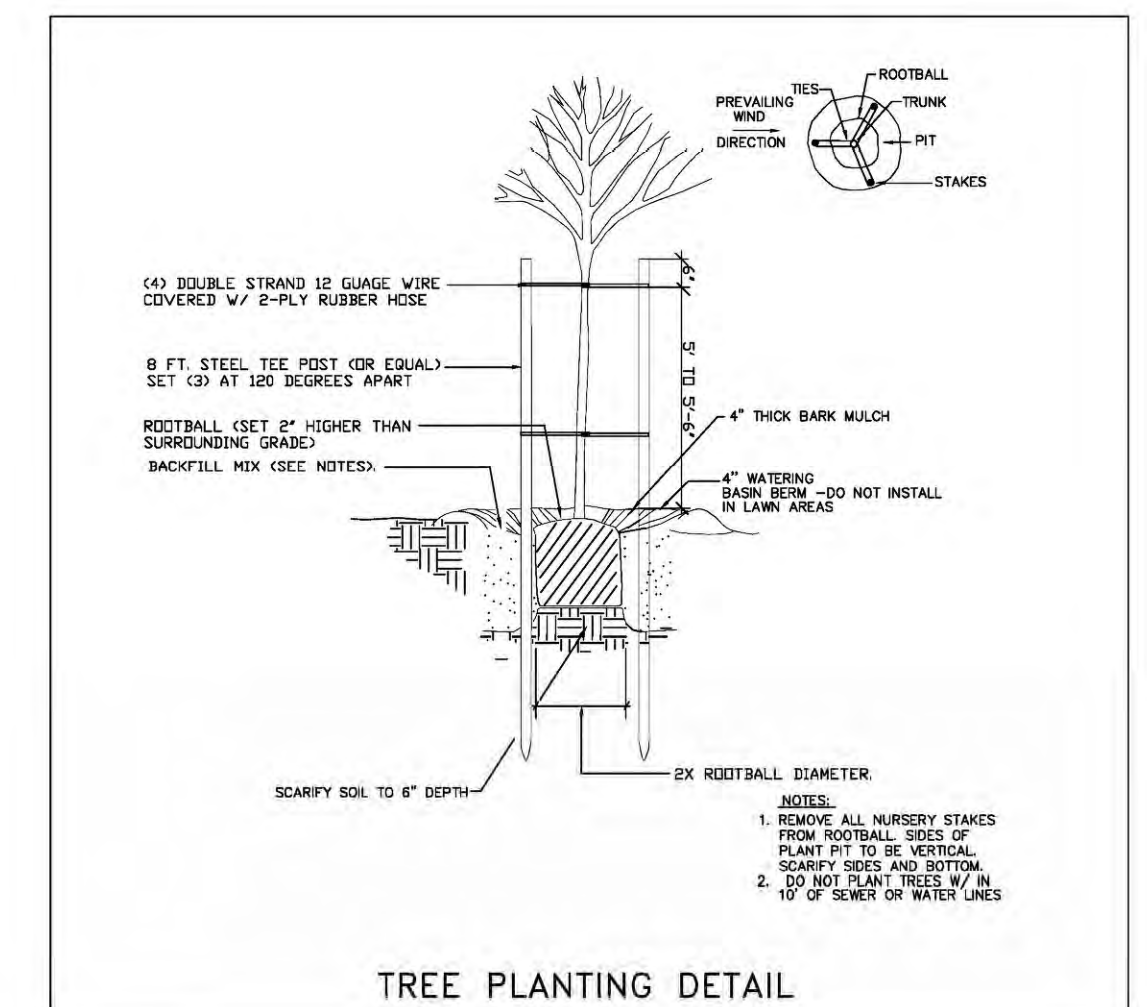
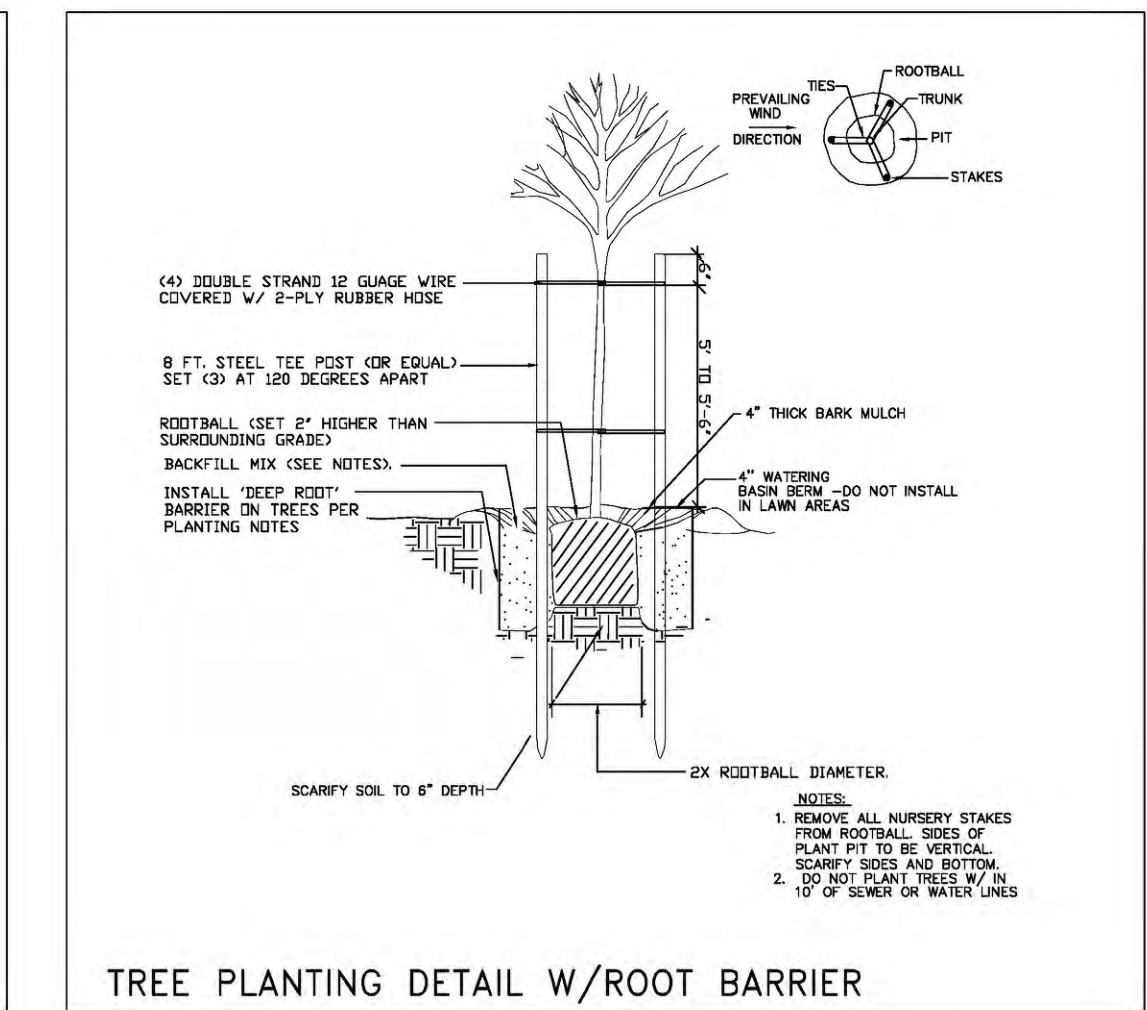
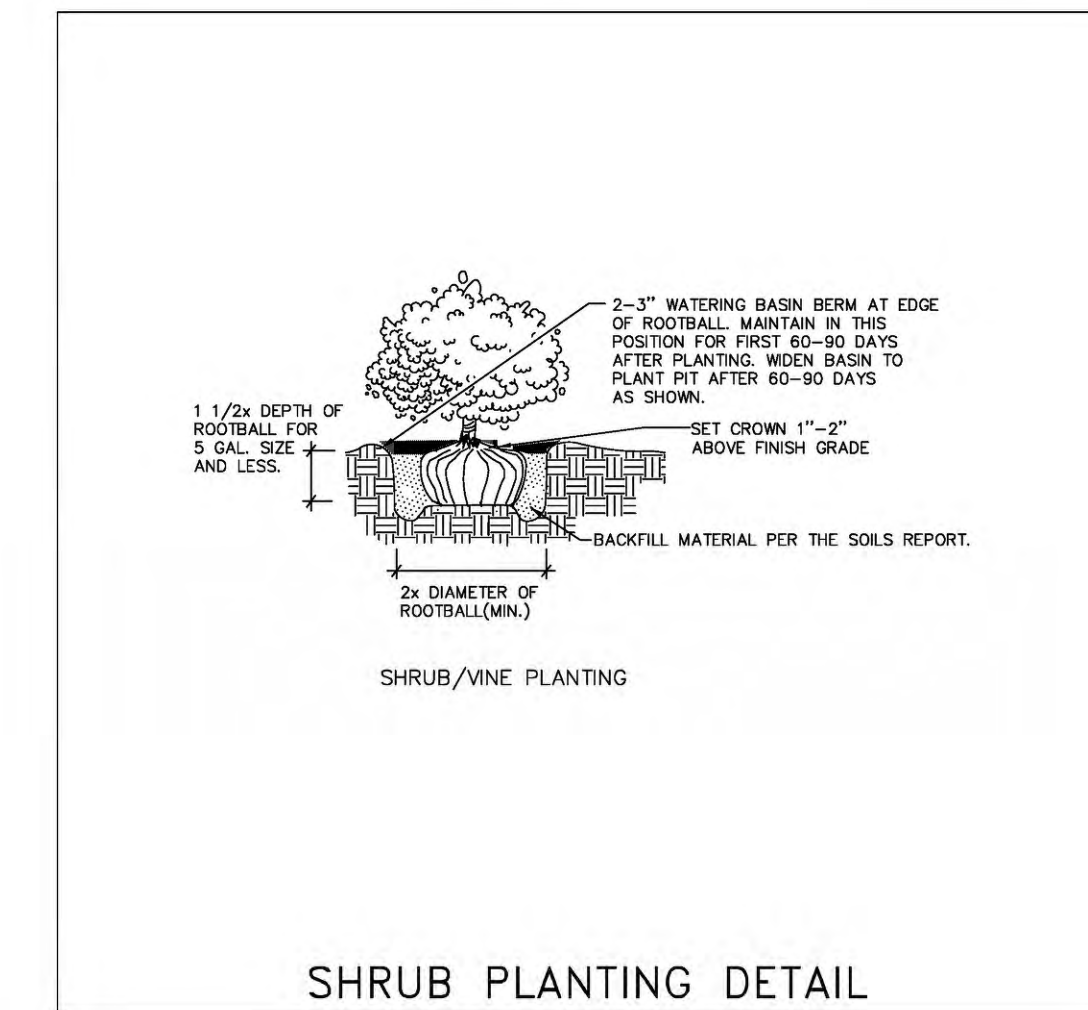
HYDROZONE / PLANTING DESCRIPTION	PLANT FACTOR (PF)	IRRIGATION METHOD	IRRIGATION EFFICIENCY (IE)	ETAF (PF / IE)	LANDSCAPE AREA (sq. ft.)	ETAF x AREA	ESTIMATED TOTAL WATER USE (ETWU)
REGULAR LANDSCAPE AREAS:							
LOW WATER USE	0.3	DRIP	0.81	0.3703703	70141	25978.14321	678470.8
MEDIUM WATER USE	0.5	BUBBLER	0.81	0.6172839	1181	716.686079	18662.0
					TOTALS:	71302	26895
SPECIAL LANDSCAPE AREAS:							
REC. AREA					0	0	0
WATER FEATURE 1					0	0	0
WATER FEATURE 2					0	0	0
					TOTALS:	0	0
							ETWU TOTAL: 695,133
							MAXIMUM ALLOWED WATER ALLOWANCE (MAWA): 835,517

ETAF CALCULATIONS:

REGULAR LANDSCAPE AREAS:	
TOTAL ETAF x AREA	26,895
TOTAL LANDSCAPE AREA	71,302
AVERAGE ETAF	0.37

ALL LANDSCAPE AREAS:	
TOTAL ETAF x AREA	26,895
TOTAL LANDSCAPE AREA	71,302
SITELWIDE ETAF	0.37

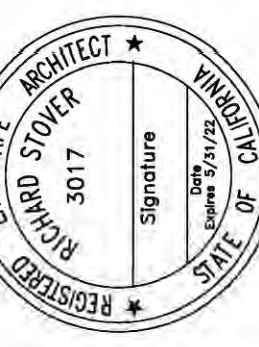
NOTE: AVERAGE ETAF FOR REGULAR LANDSCAPE AREAS MUST BE 0.55 OR BELOW FOR RESIDENTIAL AREAS, AND 0.45 OR BELOW FOR NON-RESIDENTIAL AREAS.



REVISIONS	BY

RW Stover & Associates, Inc.
Landscape Architecture
1620 North Main Street, Suite 4
Walnut Creek, CA 94596
Ph: 925.951.2583

INDUSTRIAL BUILDING
COPPERHILL PARKWAY & BRICKWAY BLVD.
SANTA ROSA, CALIFORNIA



PLANT IMAGES
AND WLO
WATER BUDGET

DRAWN	KD
CHECKED	RS
DATE	11-16-21
SCALE	
JOB NO.	
SHEET	L3
	x
OF	SHEETS