

# NORTH COAST TRAILS PROJECT

## ITEMS TO BE PROVIDED BY COUNTY:

1. ENCROACHMENT PERMIT FROM SONOMA COUNTY TRANSPORTATION & PUBLIC WORKS
2. SOILS REPORT BY QUESTA
3. SIGNS
4. COASTAL DEVELOPMENT PERMIT (CPH09-0007)
5. WATER QUALITY CERTIFICATION (W010-1B12018WH56)
6. ARMY CORPS OF ENGINEERS PERMIT (2009-00266-H)
7. CA. DEPARTMENT OF FISH & WILDLIFE PERMIT (1600-2012-011-R3)
8. TIP ID SON 070008

## SCOPE OF WORK:

BASE BID: PERFORM CLEARING, GRUBBING, BOARDWALKS, STABILIZED PATHS, DRAINAGE IMPROVEMENTS, CONCRETE LANDING, CONCRETE PADS, GRAVEL PARKING AREAS, PREPARE & IMPLEMENT STORMWATER POLLUTION PREVENTION PROGRAM, PARKING LOT STRIPING, INSTALL SIGN POSTS (SIGNS TO BE PROVIDED BY COUNTY), AND ASSORTED AMENITIES.

## PHASE --

## STEWARTS POINT TRAIL AND KASHIA TRAIL, SONOMA COUNTY, CALIFORNIA CONSTRUCTION PLANS

### GENERAL NOTES

1. ALL MATERIALS, WORKMANSHIP, AND CONSTRUCTION SHALL CONFORM TO THE STATE OF CALIFORNIA STANDARD SPECIFICATIONS AND STANDARD PLANS (LATEST REVISION), UNLESS OTHERWISE NOTED.
2. ALL UTILITIES CONFLICTING WITH THE PROPOSED CONSTRUCTION SHALL BE LOCATED PRIOR TO START OF CONSTRUCTION.
3. THE SUBGRADE, CLASS II AGGREGATE BASE, ASPHALTIC CONCRETE SHALL BE 50% (MIN.) VIRGIN MATERIALS AND SHALL HAVE A RELATIVE COMPACTION OF 95%, SHALL BE FREE OF LOOSE OR EXTRANEIOUS MATERIAL, AND BE A TIGHT, NON-YIELDING SURFACE WITH NO VISIBLE DISPLACEMENT.
4. UNDERGROUND SERVICE ALERT (USA) - CALL TOLL FREE 800-642-2444 AT LEAST 48 HOURS PRIOR TO EXCAVATION.
5. ALL UNUSABLE EXCESS SOIL MATERIAL, STUMPS AND BOULDERS SHALL BE REMOVED FROM THE SITE AND DISPOSED OF IN A LEGAL MANNER AND BECOME PROPERTY OF THE CONTRACTOR.

### GRADING NOTES

1. PERFORM GRADING IN ACCORDANCE WITH THE LATEST EDITION OF APPENDIX CHAPTER 33 OF THE CALIFORNIA BUILDING CODE, APPLICABLE SONOMA COUNTY REGULATIONS AND TO THE RECOMMENDATIONS OF THE GEOTECHNICAL ENGINEERING REPORT FOR THIS PROJECT.
2. EXISTING DRAINAGE COURSES RECEIVING WATERS FROM THIS SITE AND LOCATED THROUGHOUT THIS SITE SHALL REMAIN OPEN AND CLEAR OF DEBRIS TO PROPERLY CONVEY STORM WATER. IF EXISTING DRAINAGE COURSES RECEIVING WATERS FROM THIS SITE ARE LOCATED IN THE COUNTY RIGHT-OF-WAY AND NEED MAINTENANCE, CONTACT THE DEPARTMENT OF TRANSPORTATION AND PUBLIC WORKS AT (707) 565-2231 AND THE DEPARTMENT OF PARKS AND RECREATION AT (707) 865-2391 FOR FURTHER ASSISTANCE. IN ANY EVENT, THE OWNER AND/OR CONTRACTOR SHALL BE HELD LIABLE FOR ANY DAMAGE DUE TO OBSTRUCTING NATURAL DRAINAGE PATTERNS.
3. THE CONTRACTOR SHALL IMMEDIATELY NOTIFY THE DESIGN ENGINEER UPON DISCOVERING SIGNIFICANT DISCREPANCIES, ERRORS OR OMISSIONS IN THE PLANS. PRIOR TO PROCEEDING, THE OWNER SHALL HAVE THE PLANS REVISED TO CLARIFY IDENTIFIED DISCREPANCIES, ERRORS OR OMISSIONS. THE REVISED PLANS SHALL BE SUBJECT TO REVIEW BY THE CHIEF BUILDING OFFICIAL.
4. THE CONTRACTOR SHALL BE RESPONSIBLE FOR NOTIFYING UNDERGROUND SERVICE ALERT (USA), TOLL FREE AT 1-800-642-2444, AT LEAST TWO WORKING DAYS PRIOR TO EXCAVATION. THE CONTRACTOR SHALL UNCOVER RELEVANT UTILITIES TO VERIFY THEIR LOCATION AND ELEVATION. IF UNEXPECTED OR CONFLICTING UTILITIES ARE ENCOUNTERED DURING EXCAVATION, NOTIFY USA, THE UTILITY OWNER AND/OR THE PROJECT ENGINEER IMMEDIATELY. UTILITIES INCLUDE BUT ARE NOT LIMITED TO WATER, SEWER, ELECTRICAL, GAS, TELEPHONE AND CABLE/TV.
5. IN THE EVENT CULTURAL RESOURCES (I.E., HISTORICAL, ARCHAEOLOGICAL, AND PALEONTOLOGICAL RESOURCES, AND HUMAN REMAINS) ARE DISCOVERED DURING GRADING OR OTHER CONSTRUCTION ACTIVITIES, WORK SHALL BE HALTED WITHIN A 100 FOOT RADIUS OF THE FIND. THE NORTHWEST INFORMATION CENTER SHALL BE NOTIFIED AT (707) 664-0880. A QUALIFIED ARCHEOLOGIST SHALL BE CONSULTED FOR AN ON-SITE EVALUATION. ADDITIONAL MITIGATION MAY BE REQUIRED BY THE COUNTY PER THE ARCHEOLOGISTS RECOMMENDATIONS. IF HUMAN BURIALS OR HUMAN REMAINS ARE ENCOUNTERED, THE CONTRACTOR SHALL ALSO NOTIFY THE COUNTY CORONER AT (707) 565-5070.
6. SHOULD GRADING OPERATIONS ENCOUNTER HAZARDOUS MATERIALS, OR WHAT APPEAR TO BE HAZARDOUS MATERIALS, STOP WORK IN THE AFFECTED AREA IMMEDIATELY AND CONTACT 911 OR THE APPROPRIATE AGENCY FOR FURTHER INSTRUCTION.

### EARTHWORK NOTES

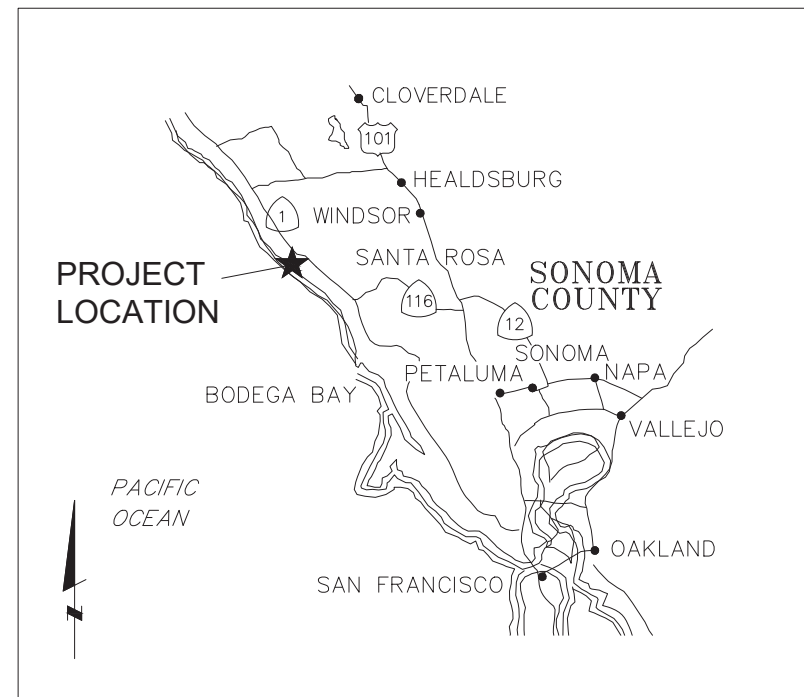
1. ALL QUANTITIES SHOWN ON THIS PLAN ARE APPROXIMATE. CALCULATED EXCESS AND SHORTAGE ARE TO FINISHED ROUGH GRADE AND EXISTING GROUND. THE ACTUAL AMOUNT OF EARTH MOVED WILL VARY, DEPENDENT ON COMPACTION, CONSOLIDATION, STRIPPING REQUIREMENTS, AND THE CONTRACTOR'S METHOD OF OPERATION.
2. DUE TO THE INEXACT NATURE OF EARTHWORK ESTIMATING, THERE IS NO GUARANTEE OF THESE QUANTITIES. CONTRACTOR SHALL MAKE HIS OWN ESTIMATE FOR BID AND CONSTRUCTION PURPOSES.

### DISTURBED AREA

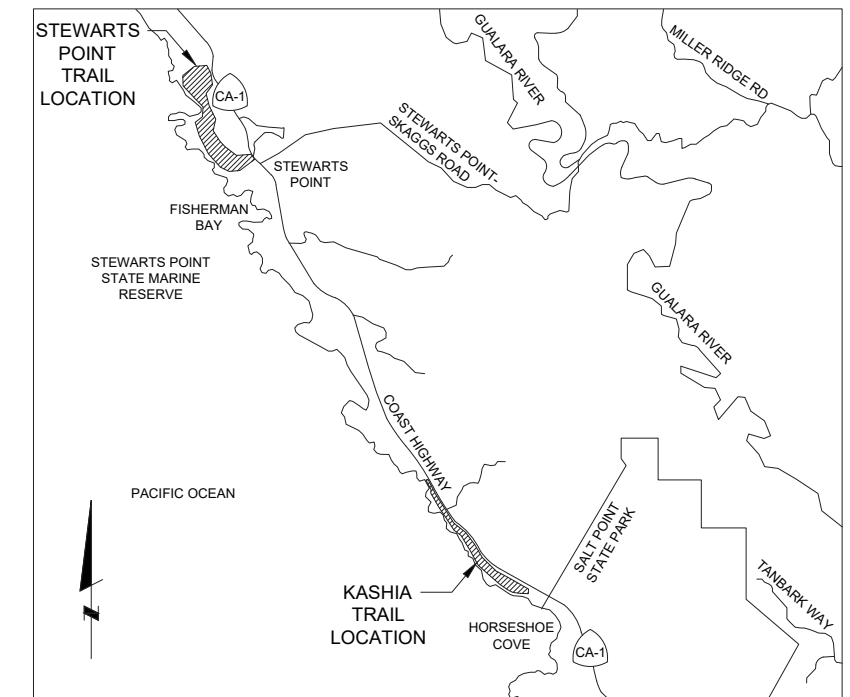
TOTAL AREA = 0.70 ACRES

### ABBREVIATIONS

AB	AGGREGATE BASE
AC	ASPHALT CONCRETE
AFG	ABOVE FINISH GRADE
AGGR	AGGREGATE
&	AND
APPROX	APPROXIMATE
@	AT
BFG	BELOW FINISH GRADE
BVCE	BEGIN VERTICAL CURVE ELEVATION
BVCS	BEGIN VERTICAL CURVE STATION
CL	CLASS
CONC	CONCRETE
CLR	CLEARANCE
CP	CONTROL POINT
DIA, Ø	DIAMETER
EA	EACH
EL, ELEV	ELEVATION
EP	EDGE OF PAVEMENT
EVCE	END VERTICAL CURVE ELEVATION
EVCS	END VERTICAL CURVE STATION
EX., EXIST	EXISTING
(E)	EXISTING
FG	FINISHED GRADE
FL	FLOW LINE
FT	FEET
GALV	GALVANIZED
GB	GRADE BREAK
H, HORIZ	HORIZONTAL
INV	INVERT
JP	JOINT POLE
LF	LINEAR FEET
LT	LEFT
MAX	MAXIMUM
MIN	MINIMUM
MISC	MISCELLANEOUS
MH	MANHOLE
MON	MONUMENT
N	NORTH
NO., #	NUMBER
NTS	NOT TO SCALE
O.C.	ON CENTER
OH	OVER HEAD
PCC	POINT COMPOUND CURVE
PRC	POINT OF REVERSE CURVATURE
PJ	POINT OF INTERSECTION
PP	POWER POLE
PROP	PROPERTY
PT	POINT
PRVCE	POINT OF REVERSE VERTICAL CURVE ELEVATION
PRVCS	POINT OF REVERSE VERTICAL CURVE STATION
PVI	POINT OF VERTICAL INTERSECTION
R	RADIUS
RBP	RESIN BASED PAVEMENT
RC	RELATIVE COMPACTION
RCP	REINFORCED CONCRETE PIPE
R/W	RIGHT OF WAY
S	SLOPE OR SOUTH
SD	STORM DRAIN
SDMH	STORM DRAIN MANHOLE
SHT	SHEET
SS	SANITARY SEWER
STA	STATION
STD	STANDARD
ST	STREET
STL	STEEL
TC	TOP OF CURB
TYP	TYPICAL
VC	VERTICAL CURVE
W/	WITH
W/O	WITH OUT



VICINITY MAP  
NOT TO SCALE



LOCATION MAP  
NOT TO SCALE

### SHEET INDEX

SHEET NUMBER	SHEET TITLE
1	TITLE SHEET & INDEX
2	STEWARTS POINT TRAIL PLANS
3	STEWARTS POINT TRAIL PLANS
4	KASHIA TRAIL PLANS
5	KASHIA TRAIL PLANS
6	KASHIA TRAIL PLANS
7	STEWARTS POINT TRAIL PARKING AREA
8	KASHIA TRAIL PARKING AREA
9	SWPPP
10	PLANTING & PICNIC TABLES
11	FENCE & GATE DETAILS
12	PUNcheon, DRAINAGE LENSES & SECTION
13	40' BRIDGE DETAILS
14	HELICAL PILE
15	VAULT TOILET

**30 % DESIGN PLANS - NOT FOR CONSTRUCTION**

NORTH COAST TRAILS PROJECT  
STEWARTS POINT TRAIL & KASHIA TRAIL  
SONOMA REGIONAL PARKS



Sht	Rev	Date	By	Description	App'd

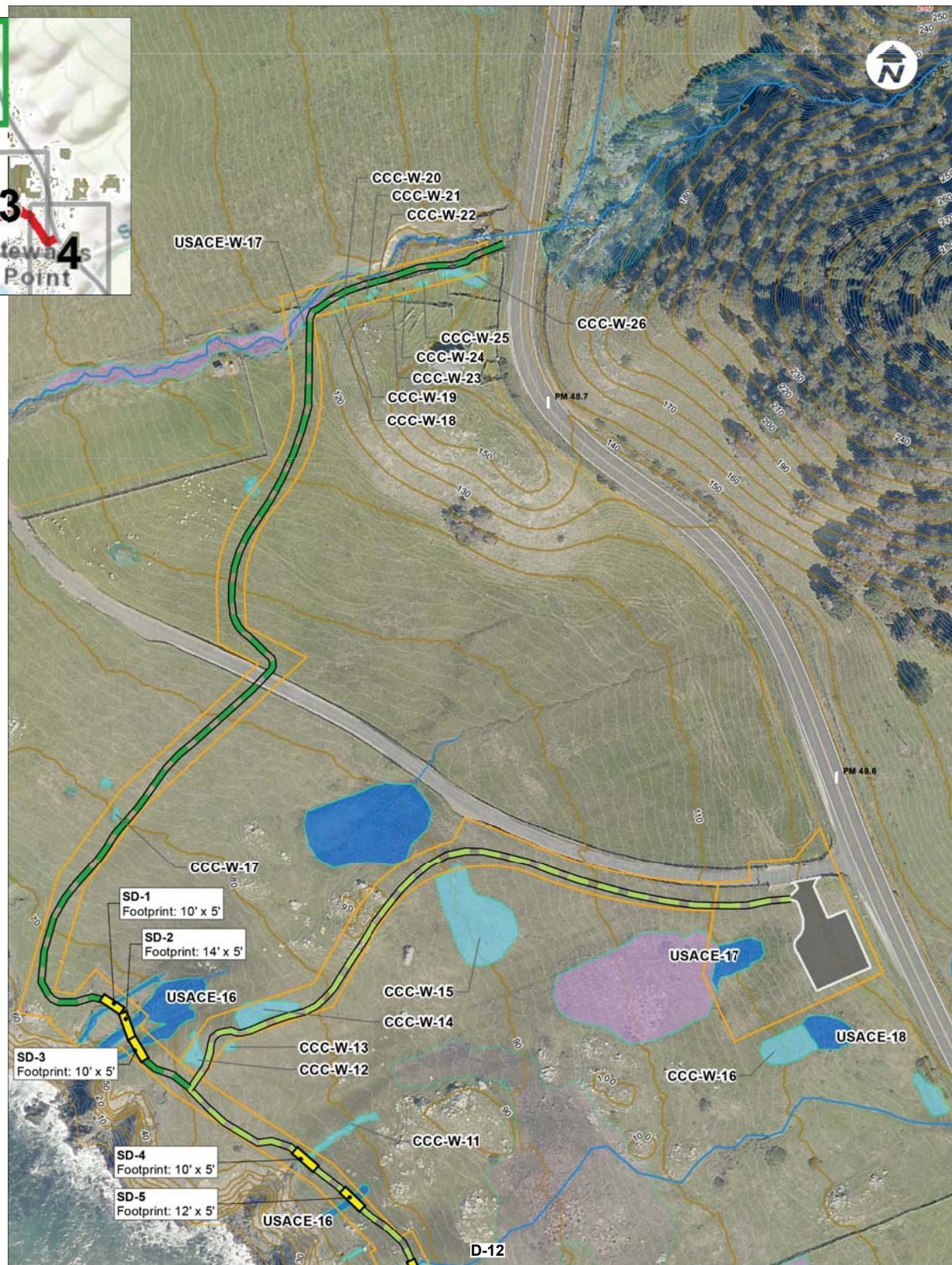
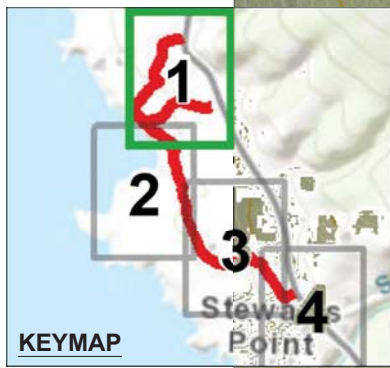
Design:	MH
Drawn:	CC
Checked:	JP
Appr'd:	XXX

NORTH COAST TRAILS PROJECT  
TITLE SHEET & INDEX

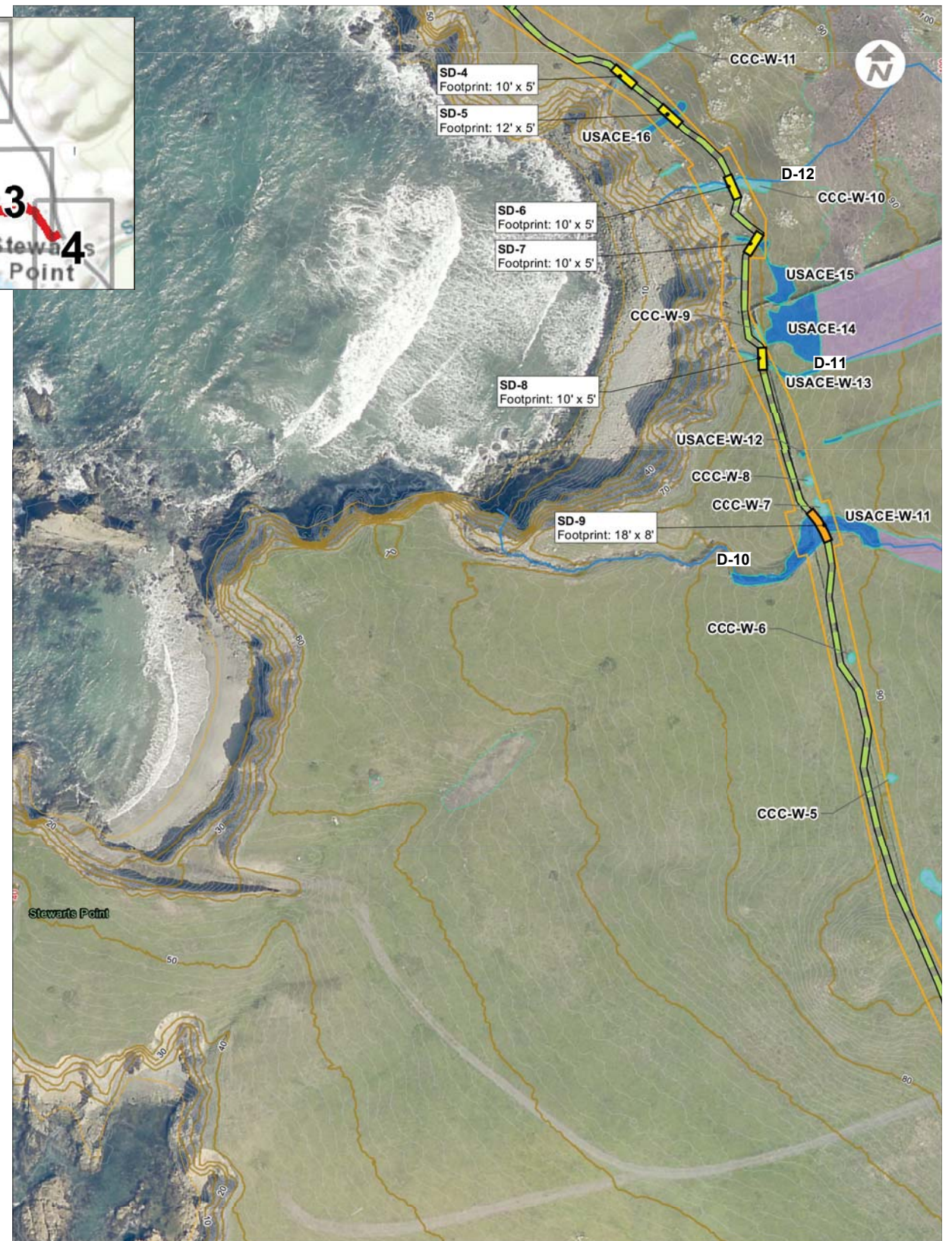
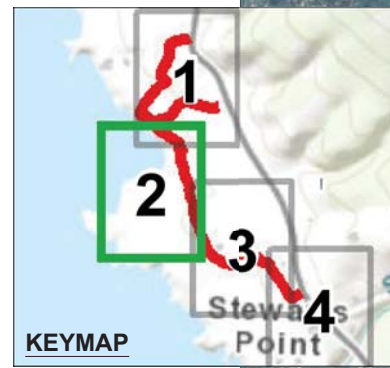
STEWARTS POINT, CA

Size D	Project 1700167
Scale:	NOT TO SCALE
Date:	4/26/21
Sheet:	1 OF 15

LAST SAVED: 9/28/2020 PLOT DATE: 9/30/2020 PLOT STYLE: ... F BAR DOES NOT MEASURE 1" DRAWING IS NOT TO SCALE - ADJUST ACCORDINGLY



MAP 1



MAP 2

**LEGEND:**

- Proposed Trail Alignment (Phase 1)
- Proposed Trail Alignment (Phase 2)
- Armored Crossing
- Minor Drainage Lens
- New Bridge
- Proposed Parking Lot
- Postmile Indicator  
(Represents location, a roadside marker may not be present)
- Stewart's Point Ranch CE areas\_final
- 10 Ft Contour
- 1 Ft Contour
- Relic Railroad Bed
- Stream Drainage
- CCC Wetland
- CORPS and CCC Wetland
- ESHA Drainage/Wetland



**30 % DESIGN PLANS - NOT FOR CONSTRUCTION**

**NORTH COAST TRAILS PROJECT**  
**STEWARTS POINT TRAIL & KASHIA TRAIL**  
 SONOMA REGIONAL PARKS  
 SONOMA COUNTY



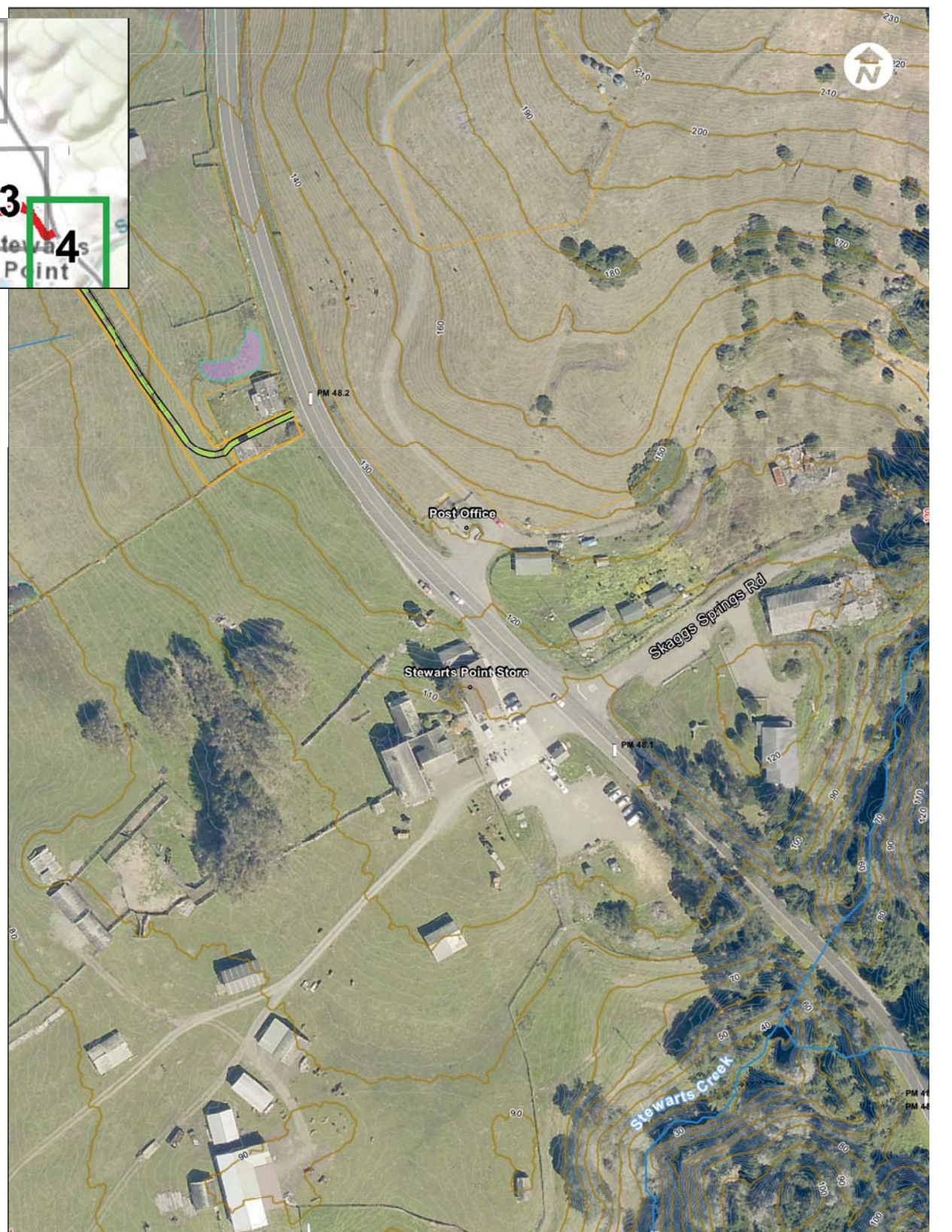
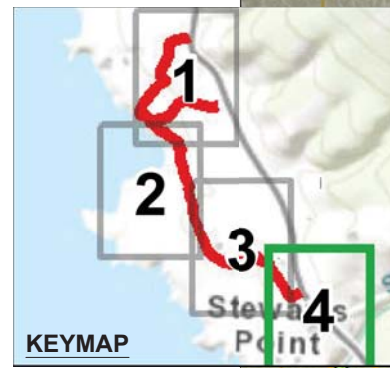
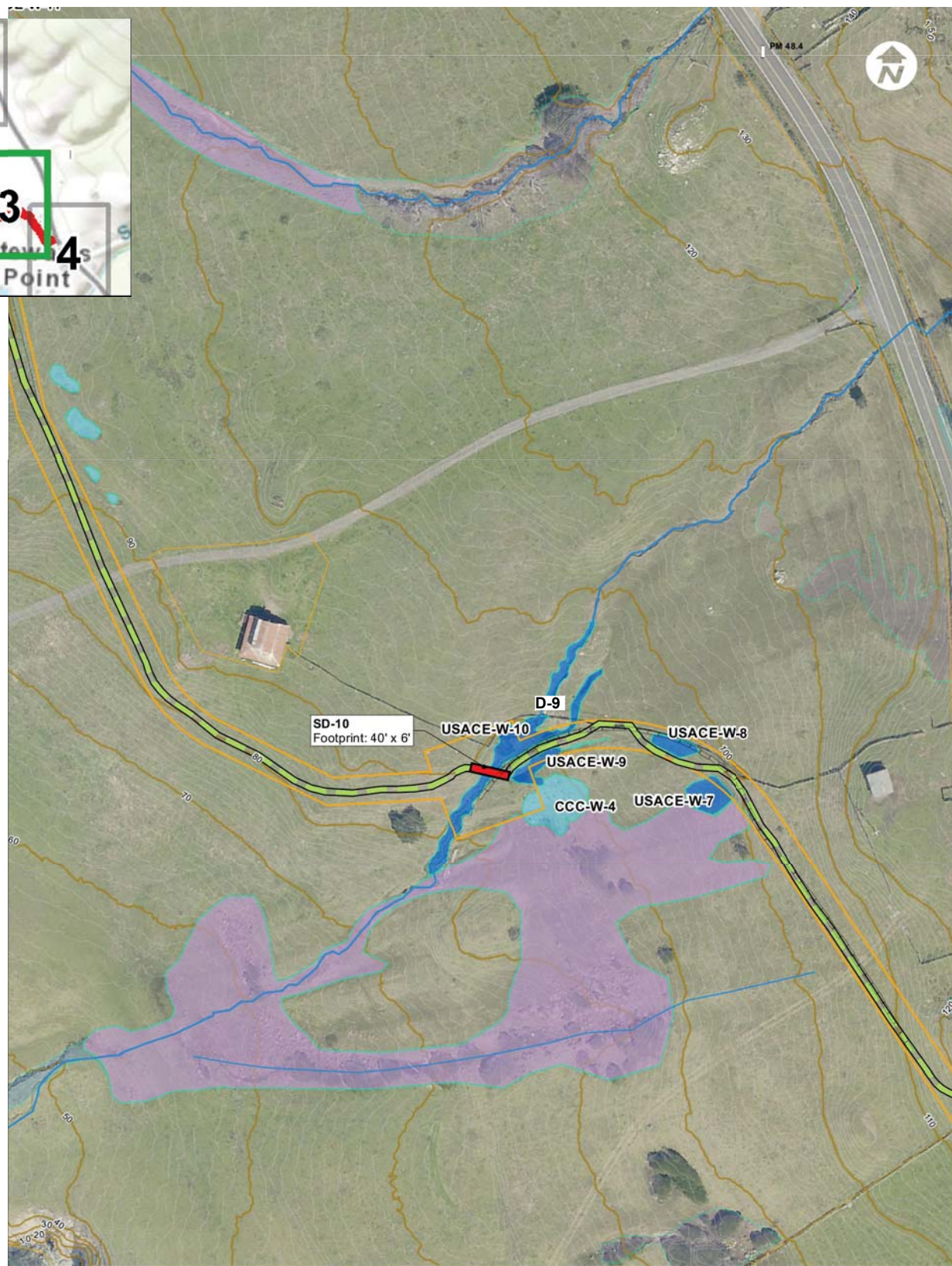
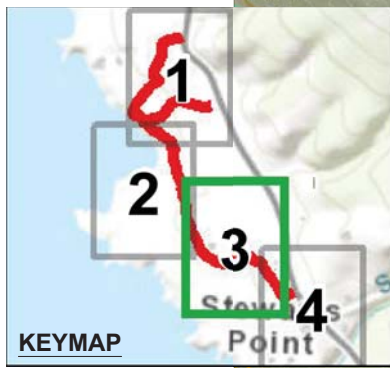
Sht	Rev	Date	By	Description	App'd

Design: MH  
 Drawn: OR  
 Checked: JP  
 App'd: XXX

**NORTH COAST TRAILS PROJECT**  
**STEWARTS PT TRAIL PLAN - 1**  
 STEWARTS POINT, CA

Size D Project 1700167  
 Scale: AS NOTED  
 Date: 4/26/21  
 Sheet: 2 OF 15

P:\2017\1700167\_NORTH\_COAST\_TRAILS\040\_SHEETS\1700167-TRAIL\_PLAN\_SHEETS.DWG  
 LAST SAVED: 4/13/2021 PLOT DATE: 4/13/2021 PLOT STYLE:



MAP 3

MAP 4

**LEGEND:**

- Proposed Trail Alignment (Phase 1)
- Proposed Trail Alignment (Phase 2)
- Armored Crossing
- Minor Drainage Lens
- New Bridge
- Proposed Parking Lot
- Postmile Indicator  
(Represents location, a roadside marker may not be present)
- Stewarts\_Point\_Ranch\_CE\_areas\_final
- 10 Ft Contour
- 1 Ft Contour
- Relic Railroad Bed
- Stream/Drainage
- CCC Wetland
- CORPS and CCC Wetland
- ESHA Drainage/Wetland

SCALE: 1" = 80'

**30 % DESIGN PLANS - NOT FOR CONSTRUCTION**

**NORTH COAST TRAILS PROJECT**  
**STEWARTS POINT TRAIL & KASHIA TRAIL**  
 SONOMA REGIONAL PARKS  
 SONOMA COUNTY



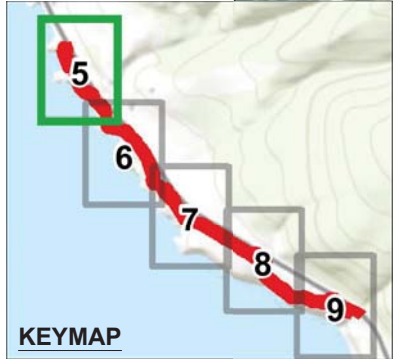
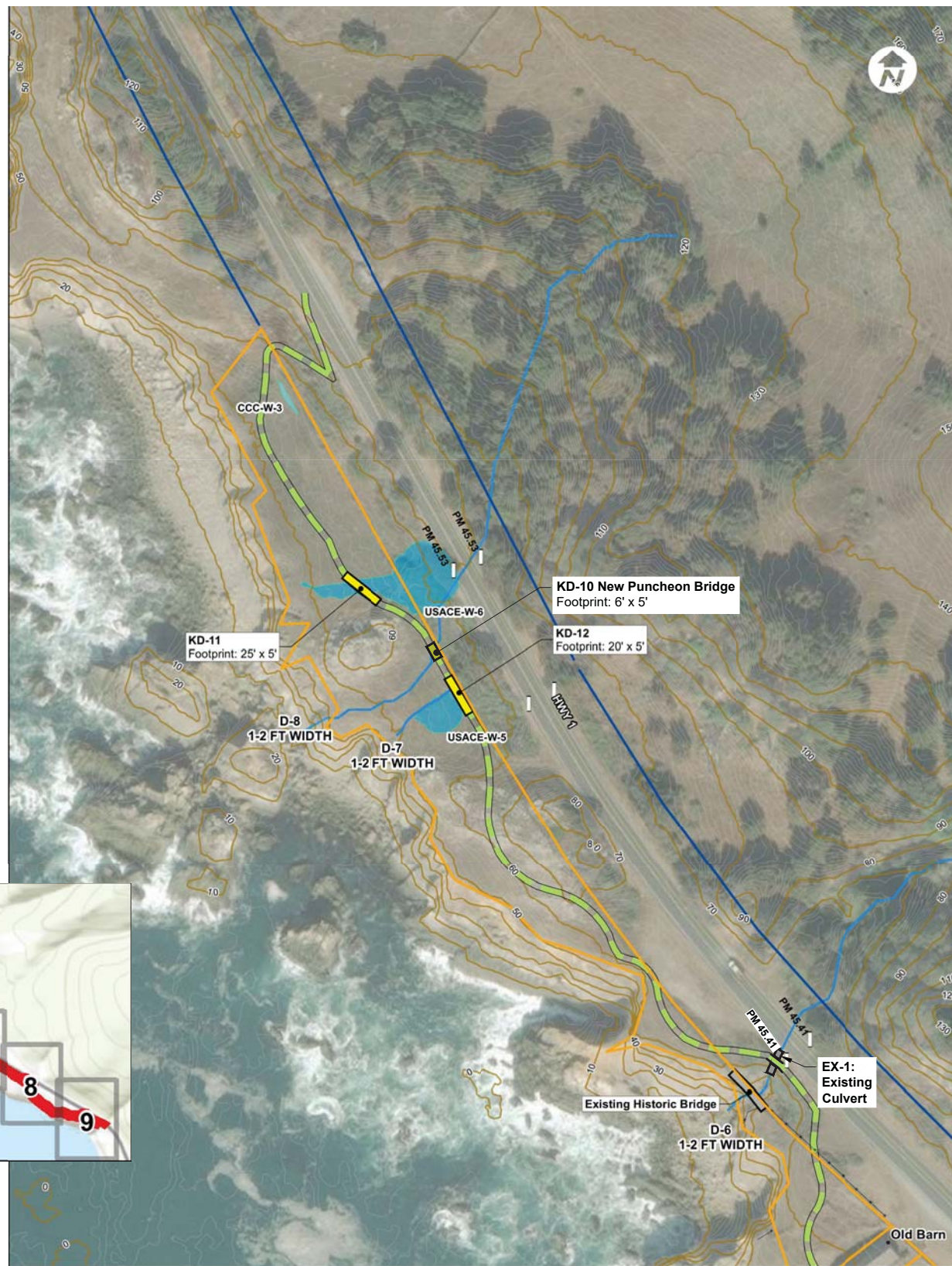
Sht.	Rev.	Date:	By:	Description:	App'd

Design: MH  
 Drawn: OR  
 Checked: JP  
 App'd: XXX

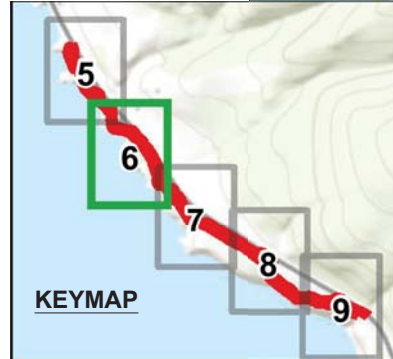
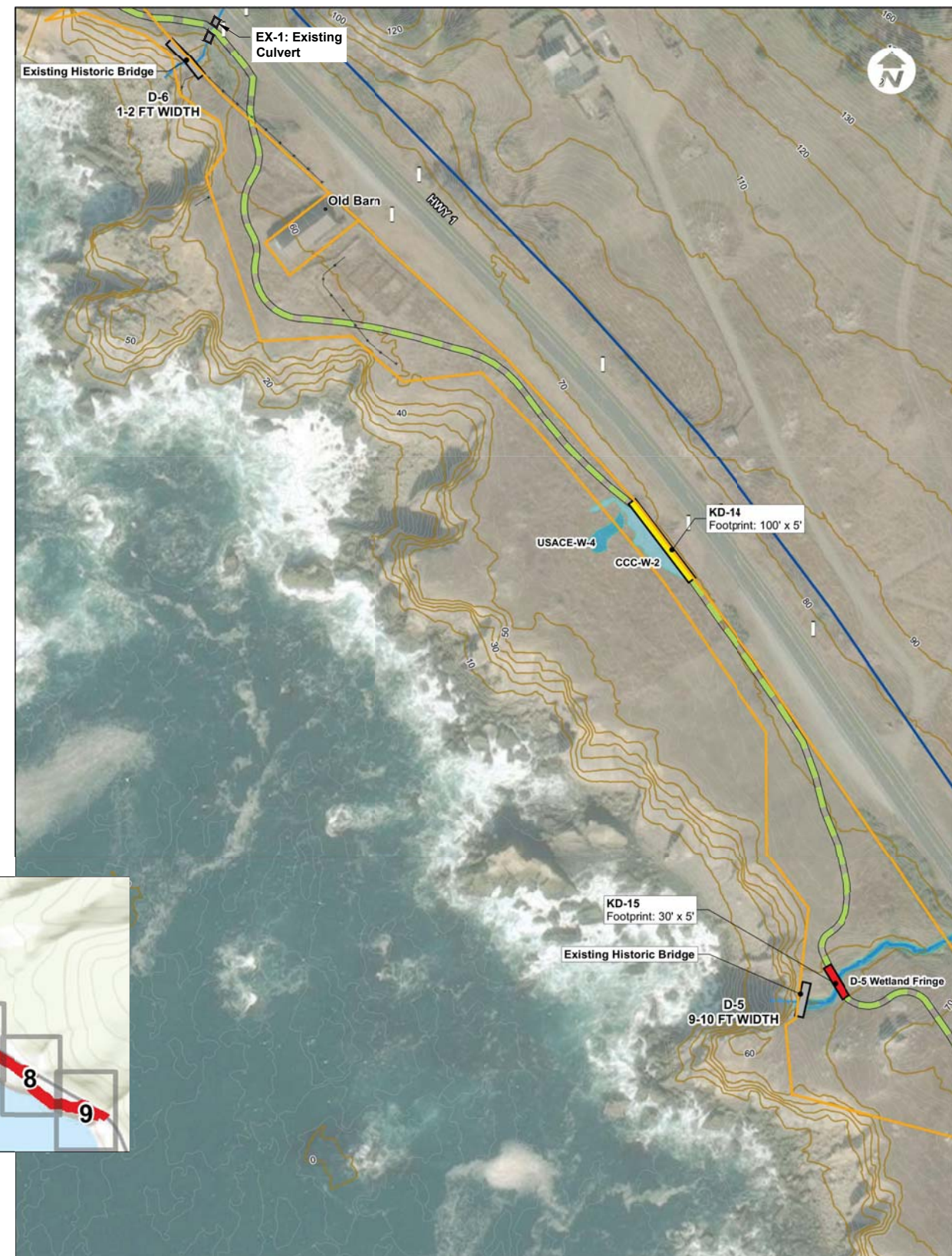
**NORTH COAST TRAILS PROJECT**  
**STEWARTS PT TRAIL PLAN - 2**  
 STEWARTS POINT, CA

Size D Project 1700167  
 Scale: AS NOTED  
 Date: 4/26/21  
 Sheet: 3 OF 15

P:\2017\1700167\_NORTH\_COAST\_TRAILS\CAD\SHEETS\1700167-TRAIL\_PLAN\_SHEETS.DWG  
 LAST SAVED: 4/13/2021 PLOT DATE: 4/13/2021 PLOT STYLE:



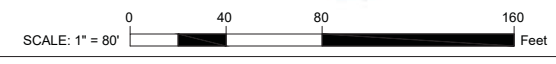
MAP 5



MAP 6

**LEGEND:**

- Proposed Trail Alignment (Phase 1)
- Proposed Trail Alignment (Phase 2)
- Armored Crossing
- Minor Drainage Lens
- New Bridge
- Proposed Parking Lot
- Postmile Indicator  
(Represents location, a roadside marker may not be present)
- Stewarts\_Point\_Ranch\_CE\_areas\_final
- 10 Ft Contour
- 1 Ft Contour
- Relic Railroad Bed
- Stream Drainage
- CCC Wetland
- CORPS and CCC Wetland
- ESHA Drainage/Wetland



**30 % DESIGN PLANS - NOT FOR CONSTRUCTION**

**NORTH COAST TRAILS PROJECT**  
**STEWARTS POINT TRAIL & KASHIA TRAIL**  
 SONOMA REGIONAL PARKS  
 SONOMA COUNTY

**QUESTA**  
 ENGINEERING CORP.  
 Civil Environmental & Water Resources  
 (510) 236-6114  
 FAX (510) 236-2423  
 questa@questacorp.com  
 P.O. Box 70356 1220 Brickyard Cove Road Point Richmond, CA 94807

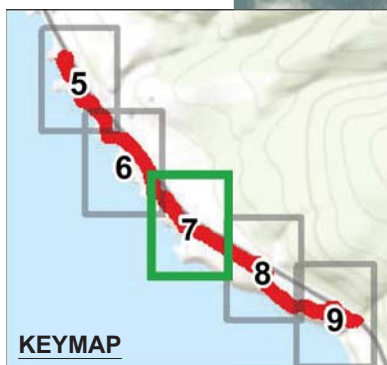
Sht	Rev	Date	By	Description	App'd

Design: MH  
 Drawn: OR  
 Checked: JP  
 App'd: XXX

**NORTH COAST TRAILS PROJECT**  
**KASHIA TRAIL PLAN - 1**  
 STEWARTS POINT, CA

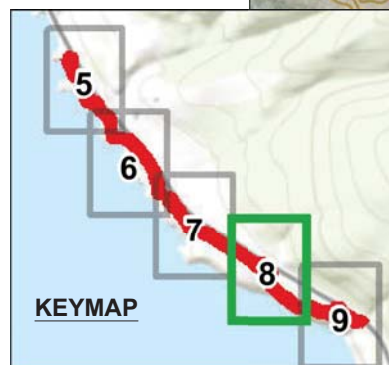
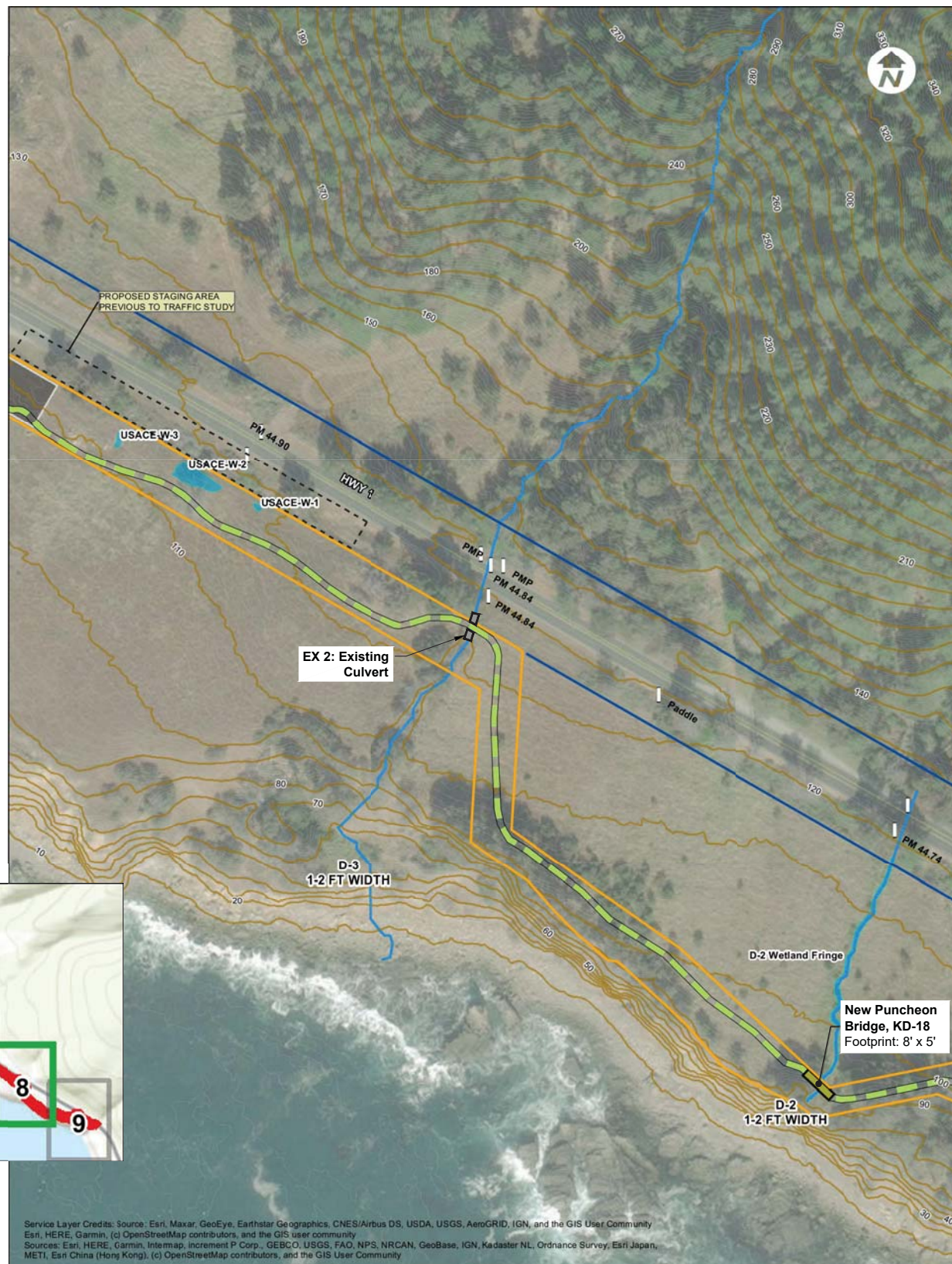
Size D Project 1700167  
 Scale: AS NOTED  
 Date: 4/26/21  
 Sheet: 4 OF 15

P:\2017\1700167\_NORTH\_COAST\_TRAILS\QAQ\SHEETS\1700167-TRAIL\_PLAN\_SHEETS.DWG  
 LAST SAVED: 4/13/2021 PLOT DATE: 4/13/2021 PLOT STYLE:



MAP 7

Service Layer Credits: Source: Esri, Maxar, GeoEye, Earthstar Geographics, CNES/Airbus DS, USDA, USGS, AeroGRID, IGN, and the GIS User Community  
 Esri, HERE, Garmin, (c) OpenStreetMap contributors, and the GIS user community  
 Sources: Esri, HERE, Garmin, Intermap, increment P Corp., GEBCO, USGS, FAO, NPS, NRCAN, GeoBase, IGN, Kadaster NL, Ordnance Survey, Esri Japan, METI, Esri China (Hong Kong), (c) OpenStreetMap contributors, and the GIS User Community



MAP 8

Service Layer Credits: Source: Esri, Maxar, GeoEye, Earthstar Geographics, CNES/Airbus DS, USDA, USGS, AeroGRID, IGN, and the GIS User Community  
 Esri, HERE, Garmin, (c) OpenStreetMap contributors, and the GIS user community  
 Sources: Esri, HERE, Garmin, Intermap, increment P Corp., GEBCO, USGS, FAO, NPS, NRCAN, GeoBase, IGN, Kadaster NL, Ordnance Survey, Esri Japan, METI, Esri China (Hong Kong), (c) OpenStreetMap contributors, and the GIS User Community

**LEGEND:**

- Proposed Trail Alignment (Phase 1)
- Proposed Trail Alignment (Phase 2)
- Armored Crossing
- Minor Drainage Lens
- New Bridge
- Proposed Parking Lot
- Postmile Indicator  
(Represents location, a roadside marker may not be present)
- Stewarts Point Ranch CE areas\_final
- 10 Ft Contour
- 1 Ft Contour
- Relic Railroad Bed
- Stream Drainage
- CCC Wetland
- CORPS and CCC Wetland
- ESHA Drainage/Wetland

SCALE: 1" = 80'

**30 % DESIGN PLANS - NOT FOR CONSTRUCTION**

**NORTH COAST TRAILS PROJECT**  
 STEWARTS POINT TRAIL & KASHIA TRAIL  
 SONOMA REGIONAL PARKS  
 SONOMA COUNTY

Civil Environmental & Water Resources  
 (510) 236-6114  
 FAX (510) 236-2423  
 questa@questac.com  
 P.O. Box 70356 1220 Brickyard Cove Road Point Richmond, CA 94807

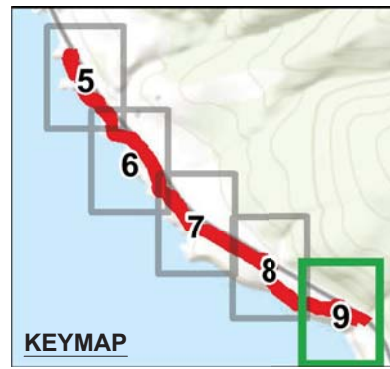
Sht	Rev.	Date	By	Description	App'd

Design: MH  
 Drawn: OR  
 Checked: JP  
 App'd: XXX

**NORTH COAST TRAILS PROJECT**  
 KASHIA TRAIL PLAN - 2  
 STEWARTS POINT, CA

Size D Project 1700167  
 Scale: AS NOTED  
 Date: 4/26/21  
 Sheet: 5 OF 15

P:\2017\1700167\NORTH\_COAST\_TRAILS\QA\SHETS\1700167-TRAIL\_PLAN\_SHEETS.DWG  
 LAST SAVED: 4/13/2021 PLOT DATE: 4/13/2021 PLOT STYLE: ----- IF BAR DOES NOT MEASURE 1" DRAWING IS NOT TO SCALE - ADJUST ACCORDINGLY



MAP 9

**LEGEND:**

	Proposed Trail Alignment (Phase 1)		Proposed Trail Alignment (Phase 2)		Steam Drainage
	Armored Crossing		Minor Drainage Lens		CCC Wetland
	New Bridge		Relic Railroad Bed		CORPS and CCC Wetland
	Proposed Parking Lot		Stewarts_Point_Ranch_CE_areas_final		ESHA Drainage/Wetland
	Postmile Indicator (Represents location; a roadside marker may not be present)		10 Ft Contour		
			1 Ft Contour		



**30 % DESIGN PLANS - NOT FOR CONSTRUCTION**

**NORTH COAST TRAILS PROJECT**  
**STEWARTS POINT TRAIL & KASHIA TRAIL**  
 SONOMA REGIONAL PARKS  
 SONOMA COUNTY



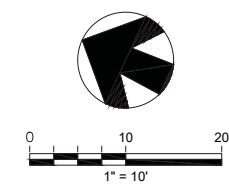
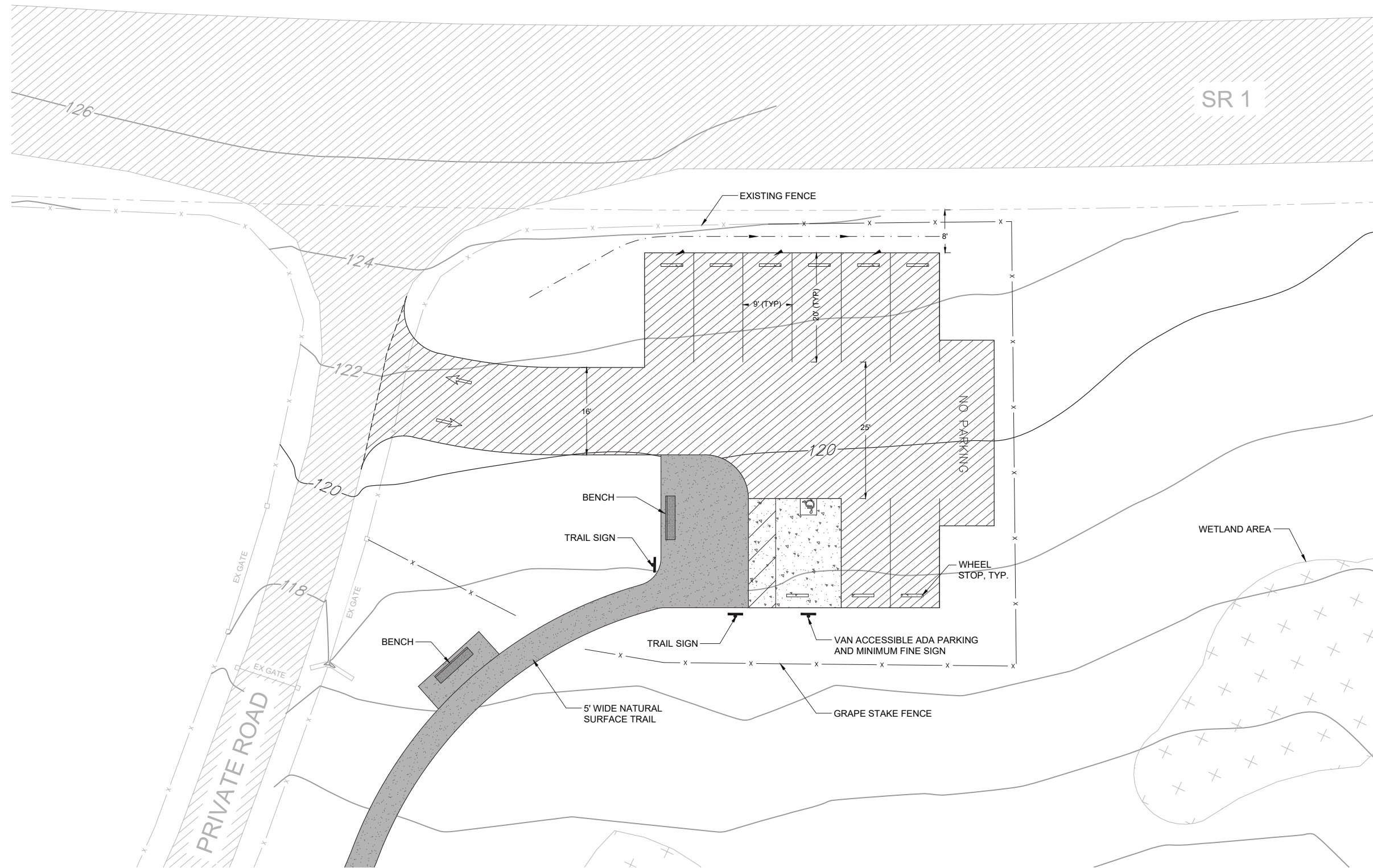
Sht	Rev	Date	By	Description	App'd

Design:	MH
Drawn:	OR
Checked:	JP
App'd:	XXX

**NORTH COAST TRAILS PROJECT**  
**KASHIA TRAIL PLAN - 3**  
 STEWARTS POINT, CA

Size	Project
D	1700167
Scale:	AS NOTED
Date:	4/26/21
Sheet:	6 OF 15

P:\2017\1700167\_NORTH\_COAST\_TRAILS\040\_SHEETS\1700167-TRAIL\_PLAN\_SHEETS.DWG  
 LAST SAVED: 4/13/2021 PLOT DATE: 4/13/2021 PLOT STYLE:



**PARKING NOTES**

SPACES:	8
VAN ACCESSIBLE SPACES:	1
TOTAL:	9

**LEGEND**

	PROPOSED	EXISTING
RIGHT-OF-WAY	———	- - - - -
EDGE OF PAVEMENT	———	- - - - -
A.C. PAVEMENT		
CONCRETE PAVEMENT		
WETLAND AREA		
FENCE	— x —	- - x - -
SAWCUT AND CONFORM LINE	- - - - -	- - - - -
SWALE FLOW LINE	- - - - -	- - - - -
GATE		

**30 % DESIGN PLANS - NOT FOR CONSTRUCTION**

**NORTH COAST TRAILS PROJECT**  
**STEWARTS POINT TRAIL & KASHIA TRAIL**  
 SONOMA REGIONAL PARKS  
 SONOMA COUNTY



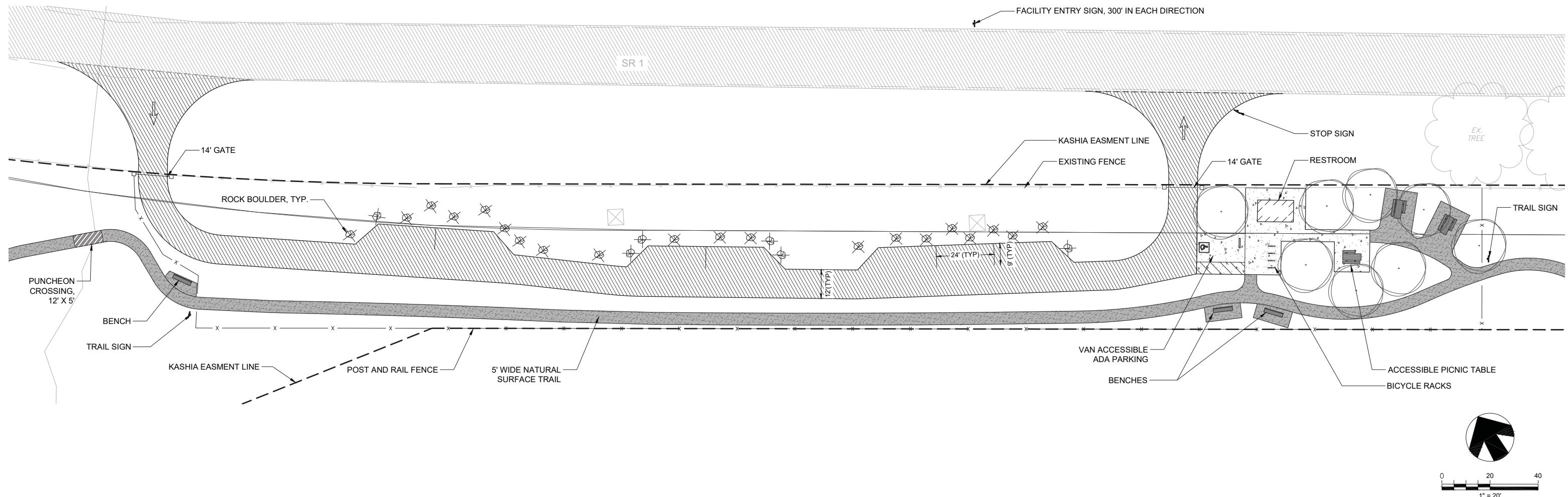
Sht.	Rev.	Date:	By:	Description:	App'd:

Design: MH  
 Drawn: OR  
 Checked: JP  
 App'd: XXX

**NORTH COAST TRAILS PROJECT**  
**STEWARTS POINT TRAIL PARKING AREA**  
 STEWARTS POINT, CA

Size D Project 1700167  
 Scale: AS NOTED  
 Date: 4/26/21  
 Sheet: 7 OF 15

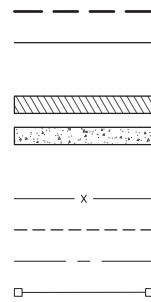
PA:\2017\1700167\_NORTH\_COAST\_TRAILS\CAD\1700167-SITES\_OR.DWG PLOT STYLE: ---  
 LAST SAVED: 9/30/2020 PLOT DATE: 9/30/2020



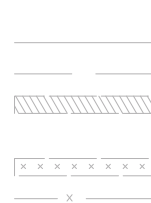
**LEGEND**

KASHIA EASEMENT LINE  
 EDGE OF PAVEMENT  
 FOG LINE  
 A.C. PAVEMENT  
 CONCRETE PAVEMENT  
 WETLAND AREA  
 FENCE  
 SAWCUT AND CONFORM LINE  
 TRAIL CENTERLINE  
 14' GATE

**PROPOSED**



**EXISTING**



**PARKING NOTES**

SPACES: 7  
 VAN ACCESSIBLE SPACES: 1  
 TOTAL: 8

**30 % DESIGN PLANS - NOT FOR CONSTRUCTION**

**NORTH COAST TRAILS PROJECT**  
 STEWARTS POINT TRAIL & KASHIA TRAIL  
 SONOMA REGIONAL PARKS  
 SONOMA COUNTY



Sht	Rev	Date	By	Description	App'd

Design: MH  
 Drawn: OR  
 Checked: JP  
 App'd: XXX

**NORTH COAST TRAILS PROJECT**  
 KASHIA TRAIL PARKING AREA  
 STEWARTS POINT, CA

Size D Project 1700167  
 Scale: AS NOTED  
 Date: 4/26/21  
 Sheet: 8 OF 15

LAST SAVED: 9/30/2020 PLOT DATE: 9/30/2020 PLOT STYLE: ...  
 PA\2017\1700167\_NORTH\_COAST\_TRAILS\CAD\1700167-SITES\_OR.DWG



# STORM WATER POLLUTION PREVENTION PLAN (SWPPP) GUIDELINES - MINIMIZING CONSTRUCTION SITE IMPACTS

CONSTRUCTION ACTIVITIES CAN SIGNIFICANTLY IMPACT WATER QUALITY AND ECOLOGIC PROCESSES. EROSION AND TRANSPORT OF DIRT, DEBRIS, CHEMICALS, AND OTHER CONSTRUCTION WASTE CAN ENTER MUNICIPAL DRAIN SYSTEMS, LOCAL CREEKS, AND REGIONAL WATERWAYS AND CAUSE SEVERE DAMAGE TO NATURAL SYSTEMS AND HUMAN INFRASTRUCTURE. MINIMIZE ENVIRONMENTAL IMPACTS BY FOLLOWING THE BMPs OUTLINED IN THE PROJECT. FAILURE TO COMPLY WITH THE BMPs INCLUDED IN THE PROJECT SPECIFICATIONS AND LOCAL, STATE, AND FEDERAL LAWS GOVERNING CONSTRUCTION SITE IMPACT MANAGEMENT AND WATER QUALITY COULD RESULT IN LEGAL VULNERABILITY AND FINES EXCEEDING \$10,000 PER DAY. TO AVOID SUCH INSTANCES, PLAN AHEAD, IMPLEMENT THE SPECIFIC BMPs OUTLINED FOR THIS PROJECT, AND FOLLOW THE GUIDELINES OUTLINED BELOW. MORE INFORMATION ON CONSTRUCTION SITE BMPs AND SWPPPs CAN BE FOUND AT: [http://www.dot.ca.gov/hq/construc/stormwater/documents/October2016\\_SWPPP\\_Manual.pdf](http://www.dot.ca.gov/hq/construc/stormwater/documents/October2016_SWPPP_Manual.pdf)

## NON-HAZARDOUS MATERIAL STORAGE

1. STORE ALL SAND, DIRT, AND OTHER ERODIBLE MATERIAL AT LEAST 10 FEET FROM CATCH BASINS AND WHEN FORECASTS CALL FOR RAIN, COVER WITH A TARP, AND SECURE EDGES WITH SANDBAGS, BRICKS, OR OTHER HEAVY OBJECTS.
2. KEEP A CLEAN JOBSITE BY SWEEPING UP PAVED OR OTHER IMPERMEABLE SURFACES DAILY, ESPECIALLY WHEN RAIN IS FORECASTED. DO NOT ADVERTENTLY OR INADVERTENTLY TRANSPORT SEDIMENT OFFSITE, INTO STORM DRAINS, OR ROADWAYS USING WATER, BLOWERS, OR OTHER MECHANICAL DEVICES. DISPOSE ALL NON-HAZARDOUS WASTES INTO THE APPROPRIATE DUMPSTER UNITS.
3. RECYCLE AT LEAST THE MINIMUM REQUIRED AMOUNT OF DEMOLITION MATERIAL INCLUDING CONCRETE, ASPHALT, BASE AGGREGATE, WOOD, ETC. AS OUTLINED IN PROJECT SPECIFICATIONS. PROMOTE RECYCLING OF DAILY CONSUMPTIVE MATERIALS SUCH AS PAPER AND DRINK CANS BY PROVIDING RECYCLE BINS ONSITE.
4. BE SURE DUMPSTERS AND STORAGE CONTAINERS ADEQUATELY MEET ONSITE DEMAND. CHECK FOR ANY LEAKS, CRACKS, OR MATERIAL OVERFLOW ON A REGULAR BASIS. ORDER EXTRA DUMPSTERS AS NECESSARY AND REPAIR ALL LEAKS AND CRACKS IMMEDIATELY.

## HAZARDOUS MATERIALS MANAGEMENT AND STORAGE

1. ALL HAZARDOUS MATERIALS AND WASTE MUST BE LABELED (E.G., DIESEL, GASOLINE, ANTIFREEZE, SOLVENTS, THINNERS, PESTICIDES, FERTILIZERS) IN CONFORMITY TO ALL LOCAL, STATE, AND FEDERAL REGULATIONS. FOR GENERAL INFORMATION ON HAZARDOUS WASTE LABELING VISIT: [HTTP://WWW.EPA.GOV/EPASWER/OSW/HAZWASTE.HTM](http://www.epa.gov/epaoswer/osw/hazwaste.htm)
2. FOR A COMPLETE LIST OF EPA DEFINED HAZARDOUS WASTES VISIT: [HTTP://WWW.EPA.GOV/EPASWER/HAZWASTE/LISTING-REF.PDF](http://www.epa.gov/epaoswer/hazwaste/listing-ref.pdf)
3. STORE ALL HAZARDOUS MATERIALS AND WASTES IN APPROVED SECONDARY CONTAINERS PROTECTED FROM THE ELEMENTS (WIND, RAIN, WATER, DIRECT SUNLIGHT). CONSIDER LIMITING THE AVAILABILITY OF HAZARDOUS WASTES BY LOCKING THEM IN SECURED CABINETS/AREAS.
4. FOLLOW THE MANUFACTURER'S INSTRUCTIONS WHEN STORING, TRANSPORTING, APPLYING, AND DISPOSING OF UNUSED HAZARDOUS WASTES. IN GENERAL, OUTDOOR APPLICATION OR USE OF MATERIALS LABELED AS HAZARDOUS WASTES SHOULD BE AVOIDED WHEN FORECASTS CALL FOR RAIN OR HEAVY FOG.

## SPILL PREPARATION AND CONTROL

1. PREPARE FOR SPILLS BY STOCKING AN ADEQUATE SUPPLY OF RAGS, ABSORBENTS, SPILL POWDERS, AND SAFETY EQUIPMENT (GLOVES, EYEGLASSES, ETC). FOLLOW ALL HAZARDOUS WASTE STORAGE AND USE RECOMMENDATIONS OUTLINED ABOVE AND CONSULT PROJECT ENGINEERS REGARDING SPILL PREPARATION PLANS THAT MAY BE REQUIRED.
2. COMMUNICATE WITH ALL CONSTRUCTION SITE WORKERS THE IMPORTANCE OF DETECTING AND REPORTING LEAKS TO JOBSITE MANAGERS.
3. CONTAIN ALL SPILLS OR LEAKS UPON DETECTION.
4. PREVENT ALL LEAKS AND SPILLS FROM ENTERING GUTTERS, MUNICIPAL STORM DRAINS, AND ADJACENT CREEKS/WATERWAYS.
5. REPORT ALL HAZARDOUS MATERIAL SPILLS TO THE LOCAL GOVERNMENT ENTITIES OVERSEEING CONSTRUCTION. IN ADDITION, ANY SPILL OF HAZARDOUS MATERIALS, INCLUDING OIL, PAINT, GASOLINE, AND DIESEL, THAT REACH STATE WATERS MUST BE REPORTED TO THE OFFICE OF SPILL PREVENTION AND RESPONSE. THEY CAN BE REACHED THROUGH THE DEPARTMENT OF FISH AND GAME'S TOLL FREE LINE: CAL TIP 1-888-DFG-CAL TIP

## VEHICLE MAINTENANCE AND CLEANING

1. INSPECT ALL ON-SITE VEHICLES FOR OIL, FUEL, ANTIFREEZE, OR GENERAL FLUID LEAKS. IF LEAKS ARE DETECTED USE APPROPRIATELY SIZED CATCH BASINS TO CAPTURE FLUIDS AND MAKE NECESSARY REPAIRS IMMEDIATELY IN AN APPROVED STAGING AREA.
2. CONDUCT ALL REFUELING AND MAINTENANCE WORK ON VEHICLES WITHIN DESIGNATED STAGING AREA. USE APPROPRIATELY SIZED DRIP PANS TO CAPTURE ALL FLUIDS, AND PREVENT SOIL AND WATER CONTAMINATION. DO NOT ALLOW FLUIDS TO REACH STORM GUTTERS, RUN-OFF IMPERVIOUS SURFACES, OR ENTER WATER BODIES AT THE SITE (SEE SPILL PREPARATION AND CONTROL, ABOVE).
3. IF VEHICLE CLEANING IS REQUIRED, DO NOT ALLOW WASH WATER TO LEAVE THE STAGING AREA. THIS MAY REQUIRE CONSTRUCTION OF BERMS AND TARPS THAT PROHIBIT RUN-OFF TO GUTTERS, STREETS, STORM DRAINS, OR CREEKS.
4. DO NOT CLEAN VEHICLES WITH DEGREASERS, SOLVENTS, OR STEAM EQUIPMENT.

## EROSION CONTROL AND SOIL CONTAMINATION

1. STORE, TRANSPORT, AND TRANSFER ALL EXCAVATED SOIL, SAND, AND MATERIAL IN CONFORMITY WITH THE TECHNICAL SPECIFICATIONS. IN ADDITION, AVOID STORING EXCAVATED MATERIAL WHERE IT CAN EASILY ERODE OR BE TRANSPORTED TO STREAMS, ROADWAYS, AND DRAIN SYSTEMS
2. CLEARING, EXCEPT THAT NECESSARY TO ESTABLISH SEDIMENT CONTROL DEVICES, SHALL NOT BEGIN UNTIL ALL SEDIMENT CONTROL DEVICES HAVE BEEN INSTALLED AND HAVE BEEN STABILIZED.
3. MAJOR GRADING OPERATIONS SHALL BE SCHEDULED DURING DRY MONTHS, AND SHALL ALLOW ADEQUATE TIME BEFORE RAINFALL BEGINS TO STABILIZE THE SOIL WITH EROSION CONTROL MATERIALS.
- 4.
5. EXAMINE AND FOLLOW THE SPECIFIC EROSION CONTROL PLAN TO MINIMIZE TRANSPORT OF DEBRIS AND SILT OFF THE CONSTRUCTION SITE. THIS MAY INCLUDE INSERTING FIBER ROLLS, SILT FENCING, WATTLES, SEEDING AND OTHER APPROVED BMPs.
6. VEGETATION REDUCES RAINFALL IMPACT AND PROVIDES COHESIVE PROPERTIES TO SOIL. THEREFORE, DURING SITE CLEARING AND GRUBING MINIMIZE THE REMOVAL OF NATURAL VEGETATION INCLUDING FORBS, GRASSES, SHRUBS, GROUND COVERINGS, AND TREES.
7. SLOPES DISTURBED DURING CONSTRUCTION ACTIVITIES WILL REQUIRE SOME FORM OF TEMPORARY AND PERMANENT STABILIZATION. CONSULT THE PROJECT EROSION CONTROL PLANS AND SPECIFICATIONS REGARDING THE SPECIFIC REQUIREMENTS. PROJECT BMPs INCLUDE INSTALLATION OF EROSION CONTROL FABRIC, HYDRO-SEEDING, DRILL-SEEDING, OR DIRECT PLANTING SEEDING AND MULCHING SHALL BE DONE AS SOON AS GRADING IS COMPLETE.
8. SOIL STABILIZATION SHALL BE COMPLETED WITHIN FIVE DAYS OF CLEARING OR INACTIVITY IN CONSTRUCTION
9. SOIL STOCKPILES MUST BE STABILIZED AND/OR SECURELY COVERED AT THE END OF EACH WORKDAY.
10. IN AREAS WHERE PERMANENT RE-SEEDING AND PLANTING IS NOT ESTABLISHED AT THE CLOSE OF THE CONSTRUCTION SEASON, ADDITIONAL CONTROL MEASURES SHALL BE USED, SUCH AS A HEAVY MULCH LAYER OR ANOTHER METHOD THAT DOES NOT REQUIRE GERMINATION, TO ENSURE SOIL STABILIZATION AT THE SITE.
11. WHERE RUNOFF NEEDS TO BE DIVERTED FROM ONE AREA AND CONVEYED TO ANOTHER, EARTH DIKES, DRAINAGE SWALES, SLOPE DRAINS OR OTHER SUITABLE PRACTICE SHALL BE CONSTRUCTED IN ACCORDANCE WITH THE DESIGN CRITERIA SET FORTH IN THE MOST RECENT VERSION OF THE CALIFORNIA STORMWATER QUALITY ASSOCIATION BEST MANAGEMENT PRACTICE HANDBOOK.
12. LINEAR SEDIMENT BARRIERS SHALL BE PLACED BELOW THE TOE OF EXPOSED AND ERODIBLE SLOPES, DOWN-SLOPE OF EXPOSED SOIL AREAS, AROUND SOIL STOCKPILES, AND AT OTHER APPROPRIATE LOCATIONS ALONG THE SITE PERIMETER.
13. STREET SWEEPING SHALL BE CONDUCTED ON AN AS NEEDED BASIS TO REMOVE SEDIMENT FROM STREETS AND ROADWAYS AND TO PREVENT THE SEDIMENT FROM ENTERING STORM DRAINS OR RECEIVING WATERS.
14. EVERY STORM DRAIN INLET WITH THE POTENTIAL TO RECEIVE SEDIMENT-LADEN RUNOFF SHALL BE PROTECTED IN ACCORDANCE WITH THE DESIGN CRITERIA SET FORTH IN THE MOST RECENT VERSION OF THE CALIFORNIA STORMWATER QUALITY ASSOCIATION BEST MANAGEMENT PRACTICE HANDBOOK. INLET PROTECTION SHALL BE INSPECTED AND MAINTAINED FREQUENTLY.
15. SEDIMENT BASINS OR SEDIMENT TRAPS SHALL BE INSTALLED ON PROJECTS WHERE SEDIMENT-LADEN WATER MAY ENTER THE DRAINAGE SYSTEM OR WATERCOURSES AND IN ASSOCIATION WITH DIKES, TEMPORARY CHANNELS, AND PIPES USED TO CONVEY RUNOFF FROM DISTURBED AREAS.
16. OTHER MEASURES, SUCH AS TRACK-OUT PREVENTION DEVICES, OR AS REQUIRED BY THE DISTRICT INSPECTOR IN ORDER TO ENSURE THAT SEDIMENT IS NOT TRACKED ONTO PUBLIC STREETS BY CONSTRUCTION VEHICLES OR WASHED INTO STORM DRAINS.
17. DURING EXCAVATION WORK, LOOK FOR UNDERGROUND STORAGE TANKS, ABANDONED PIPES, OR BURIED DEBRIS THAT WERE NOT IN THE PROJECT PLANS OR JOBSITE BACKGROUND INVESTIGATION. IF FOUND, IMMEDIATELY CONTACT THE PROJECT ENGINEER.
18. IF CONTAMINATED SOIL IS FOUND, IMMEDIATELY CONTACT SITE ENGINEERS AND LOCAL GOVERNMENT ENTITIES OVERSEEING CONSTRUCTION. SPECIAL EXCAVATION, TRANSPORT, AND TREATMENT OF CONTAMINATED SOILS MAY BE REQUIRED.
19. SUFFICIENT EROSION AND SEDIMENT CONTROL SUPPLIES SHALL BE AVAILABLE ON SITE DURING THE RAINY SEASON (OCTOBER THROUGH APRIL) TO PROTECT AREAS SUSCEPTIBLE TO EROSION DURING RAIN EVENTS. CONTRACTORS SHALL BE PREPARED YEAR-ROUND TO DEPLOY EROSION AND SEDIMENT TREATMENT CONTROL PRACTICES.

## WATER USE

1. WATER IS A PRECIOUS RESOURCE. RECYCLE AND RE-USE ON-SITE WATER RESOURCES FOR DUST CONTROL, IRRIGATION, AND OTHER USES WHEN POSSIBLE.
2. CONTACT THE LOCAL MUNICIPALITY OR AGENCY RESPONSIBLE FOR DRAINAGE IF STORM GUTTERS, SEWER SYSTEMS, OR WATER BODIES WILL RECEIVE ANY JOBSITE RUN-OFF.
3. WATER CONTAINING HIGH AMOUNTS OF SEDIMENT AND OTHER CONTAMINANTS MAY REQUIRE CONSTRUCTION OF SEDIMENT BASINS, TREATMENT FACILITIES, OR SPECIAL TRANSPORT THAT ARE OUTLINED IN THE PROJECT DRAWINGS AND SPECIFICATIONS.
4. TO REDUCE THE IMPACT OF CONTAMINATED SURFACE WATERS ON LOCAL/REGIONAL GROUNDWATER QUALITY, CONSULT WITH LOCAL OFFICIALS AND PROJECT ENGINEERS REGARDING THE PROPER TESTING, TREATMENT, AND DISPOSAL OF CONTAMINATED WATERS.

## CUTTING WOOD, ASPHALT, OR CONCRETE MATERIALS

1. CONTAIN AND PROPERLY DISPOSE ALL SAWDUST FROM CUTTING OPERATIONS AT THE JOBSITE. DO NOT ALLOW SAWDUST AND WOOD DEBRIS, ESPECIALLY TREATED LUMBER PRODUCTS, TO ENTER STORM DRAINS OR ENTER ADJACENT WATER BODIES.
2. PRIOR TO FORECASTED RAINFALL EVENTS, CLEAN UP AND DISPOSE OF ALL WOOD WASTE SOURCES.
3. WHEN SAW CUTTING ASPHALT OR CONCRETE MATERIALS BLOCK ALL STORM GUTTERS AND DRAINS TO PROHIBIT SLURRY FROM CONTAMINATING AND CLOGGING INFRASTRUCTURE. IMMEDIATELY REMOVE ANY AND ALL SLURRY WASTE THAT REACHES STORM DRAINS/GUTTERS
4. INSTALLATION OF FILTER FABRICS, SEDIMENT BASINS, STRAW BALES, OR SPECIAL FILTER EQUIPMENT MAY BE REQUIRED. CONSULT THE PROJECT PLANS AND TECHNICAL SPECIFICATIONS.
5. CONTAIN, CLEAN UP, AND PROPERLY DISPOSE ALL CUTTING WASTE AND SLURRIES UPON MOVING LOCATIONS AND COMMENCING DAILY OPERATIONS.

## ASPHALTIC PAVING

1. ASPHALTIC PAVING DURING WET WEATHER IS NOT PERMITTED DUE TO APPLICATION GUIDELINES AND ENVIRONMENTAL CONCERNS.
2. COVER ALL DRAINS AND MANHOLES WHEN PAVING OR APPLYING SEAL COATS, TACK COATS, SLURRY SEALS, AND FOG SEALS.
3. ASPHALTIC PAVING MACHINES CAN LEAK WHEN NOT IN USE. PLACE DRIP PANS AND OTHER ABSORBENT MATERIALS IN APPROPRIATE LOCATIONS TO MINIMIZE LEAKS AND SPILLS WHEN ASPHALTIC PAVING EQUIPMENT IS BEING STORED OR NOT IN USE.
4. ALL SAND USED DURING PAVING, SLURRY SEALING, AND COATING SHOULD BE REMOVED FROM THE JOB SITE AND DISPOSED OF AS TRASH. DO NOT ALLOW EXCESS MATERIALS TO ENTER STORM DRAINS OR LOCAL WATER BODIES.

## CONCRETE AND CEMENTITIOUS MATERIALS

1. STORE AND CONTAIN ALL CONCRETE AND CEMENTITIOUS PRODUCTS IN DRY AREAS AND AWAY FROM ANY WATER SOURCES.
2. IF TRUCK AND EQUIPMENT CLEANUP OCCURS ON-SITE, DESIGNATE A BASIN/AREA FOR WASHING. ALLOW WATER TO SEEP INTO A VISQUEEN LINED BASIN AND WAIT UNTIL CONCRETE HARDENS. REMOVE AND DISPOSE ALL HARDENED CONCRETE IN THE APPROPRIATE SOLID WASTE UNIT.
3. DO NOT ALLOW TRUCK AND MIXING EQUIPMENT WASH WATER TO ENTER STORM DRAINS, GUTTERS, OR ADJACENT WATER BODIES.

## PAINTING

1. RINSING OF PAINT BRUSHES, PANS, SPRAYERS AND ANY ASSOCIATED EQUIPMENT INTO STORM DRAINS, STREETS, OR WATER BODIES IS NOT PERMITTED.
2. PRIOR TO CLEANING WATER BASED PAINTING EQUIPMENT, ROLL, BRUSH, OR SPRAY ANY EXCESS PAINT ONTO A DISCARDABLE SURFACE (WOOD, PAPER, ETC.) WHEN A SINK IS UNAVAILABLE DILUTE WASTE PAINT WITH WATER AND POUR ONTO SOIL WHILE AGITATING WITH A SHOVEL OR RAKE.
3. PRIOR TO CLEANING OIL BASED PAINTING EQUIPMENT WITH A THINNER, ROLL, BRUSH, OR SPRAY ANY EXCESS PAINT ONTO A DISCARDABLE SURFACE. FILTER AND RE-USE PAINT THINNERS FOR FUTURE USE AND DISPOSE UNUSABLE THINNER AS HAZARDOUS WASTE.

## GENERAL

1. SANITARY FACILITIES OF SUFFICIENT NUMBER AND SIZE TO ACCOMMODATE CONSTRUCTION CREWS SHALL BE LOCATED AWAY FROM STORM DRAIN INLETS AND DRAINAGE FACILITIES, AND ANCHORED TO PREVENT BEING BLOWN OVER OR TIPPED BY VANDALS. THE FACILITIES SHALL BE MAINTAINED IN GOOD WORKING ORDER AND EMPTIED AT REGULAR INTERVALS BY A LICENSED SANITARY WASTE HAULER.
2. TECHNIQUES SHALL BE EMPLOYED TO PREVENT THE BLOWING OF DUST OR SEDIMENT FROM THE SITE SUCH AS WATERING ACCESS ROADS AND COMPACTION AND SEEDING OF FILL AREAS.

30 % DESIGN PLANS - NOT FOR CONSTRUCTION

NORTH COAST TRAILS PROJECT  
STEWARTS POINT TRAIL & KASHIA TRAIL  
SONOMA REGIONAL PARKS



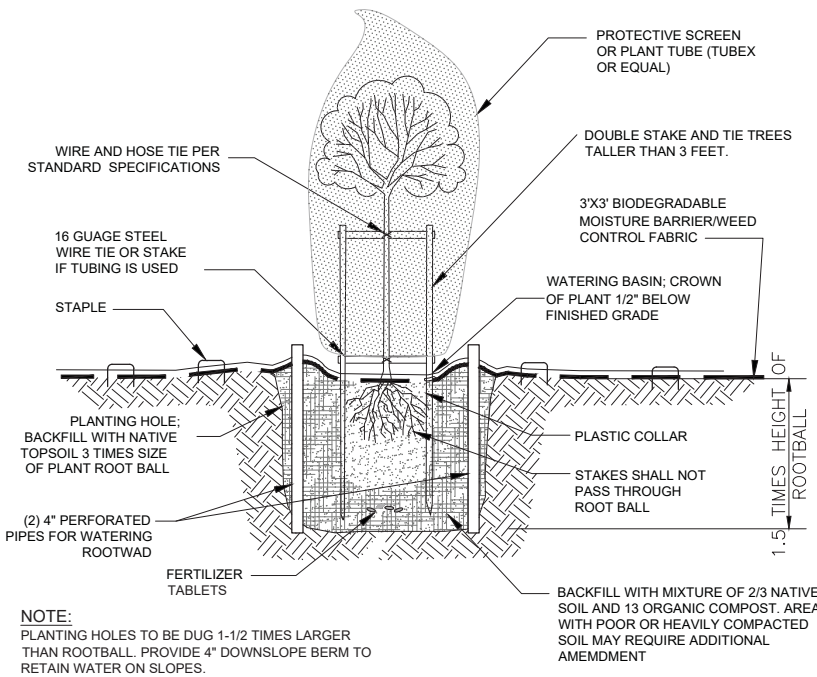
Sht	Rev	Date	By	Description	App'd

Design:	MH
Drawn:	CC
Checked:	JP
Appr'd:	XXX

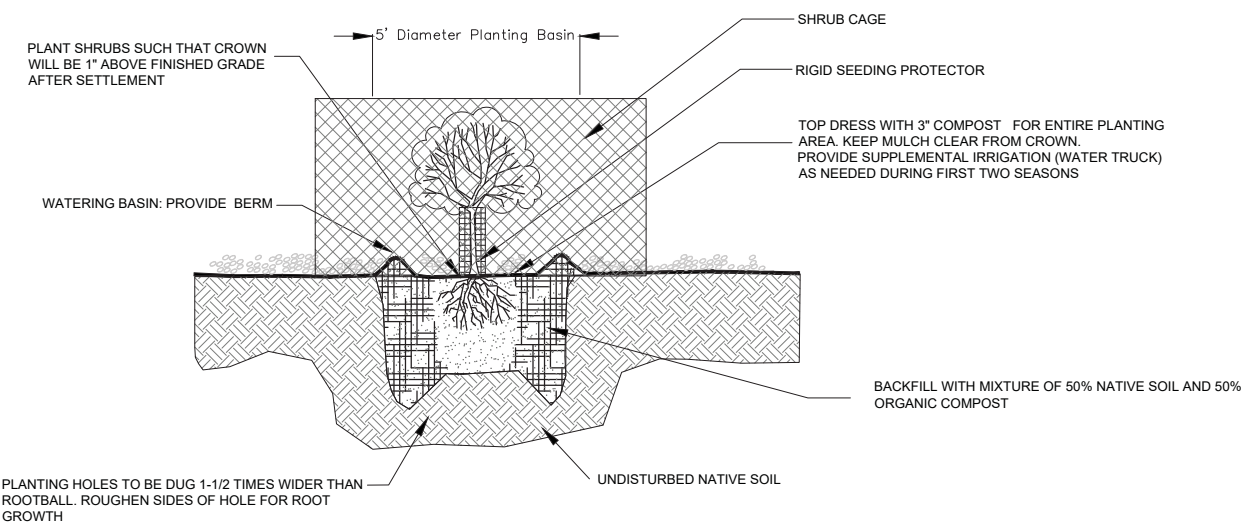
NORTH COAST TRAILS PROJECT  
SWPPP  
STEWARTS POINT, CA

Size	Project
D	1700167
Scale:	NA
Date:	4/26/21
Sheet:	9 OF 15

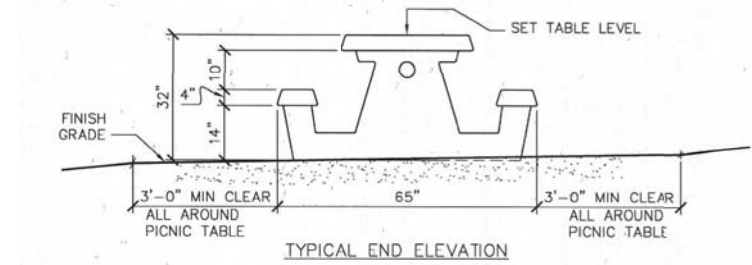
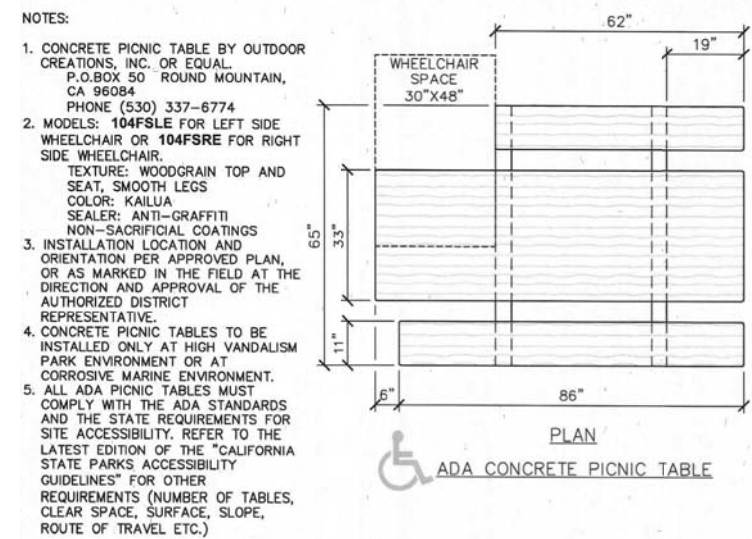
P:\2017\1700167\_NORTH\_COAST\_TRAILS\QAQ\SHEETS\1700167\_GRANT\_PROGRESS\_SHEETS.DWG LAST SAVED: 9/28/2020 PLOT DATE: 9/20/2020 PLOT STYLE: --- F BAR DOES NOT MEASURE 1" DRAWING IS NOT TO SCALE - ADJUST ACCORDINGLY



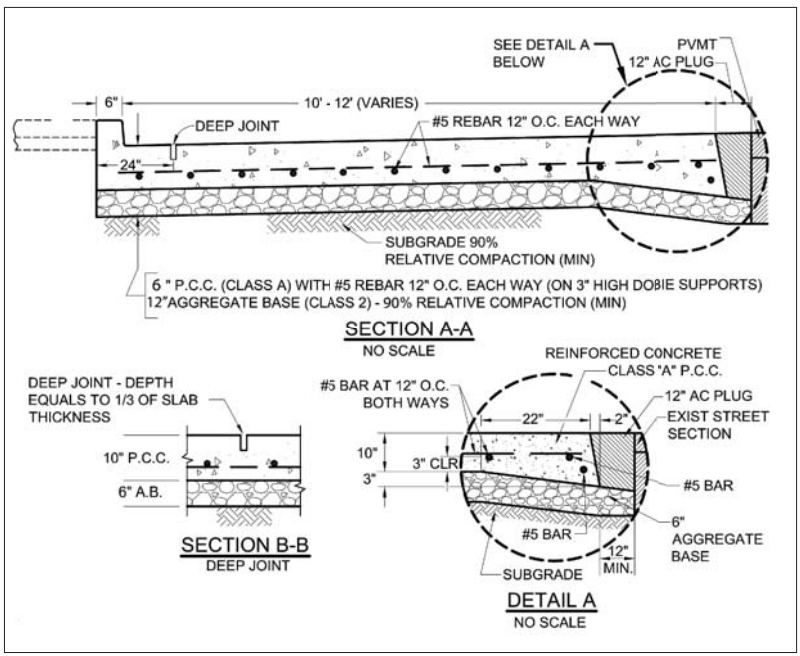
**1 TREE PLANTING WITH STAKES**  
Scale = NTS



**2 SHRUB PLANTING DETAIL**  
Scale = NTS



**3 ADA CONCRETE PICNIC TABLE**  
Scale = NTS



**4 CONCRETE PAD**  
Scale = NTS

**30 % DESIGN PLANS - NOT FOR CONSTRUCTION**

**NORTH COAST TRAILS PROJECT**  
STEWARTS POINT TRAIL & KASHIA TRAIL  
SONOMA REGIONAL PARKS



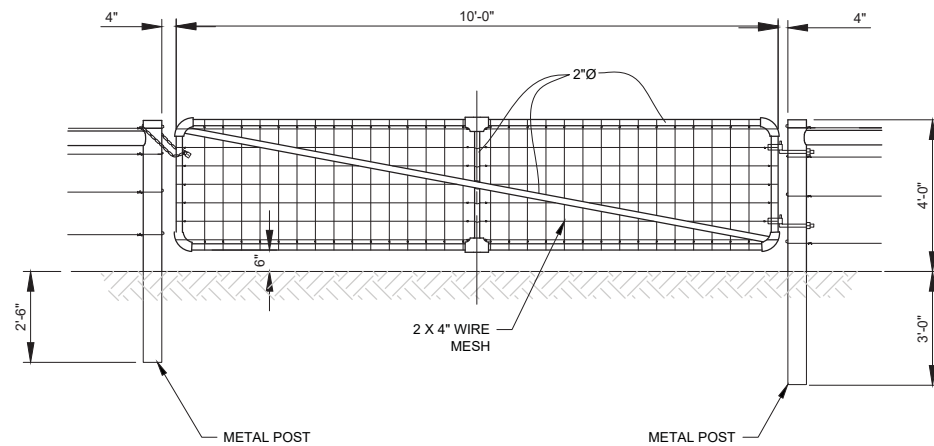
Sht	Rev	Date	By	Description	App'd

Design: MH  
Drawn: CC  
Checked: JP  
App'd: XXX

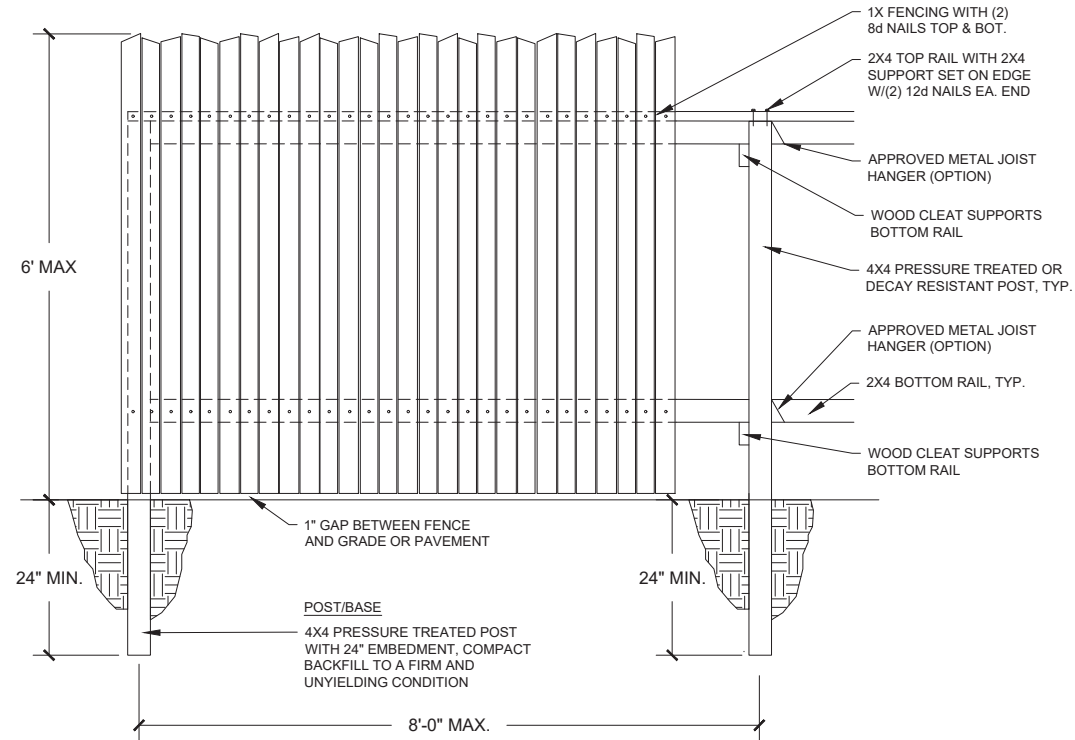
**NORTH COAST TRAILS PROJECT**  
PLANTING & PICNIC TABLE DETAILS  
STEWARTS POINT, CA

Size D Project 1700167  
Scale: NOT TO SCALE  
Date: 4/26/21  
Sheet: 10 OF 15

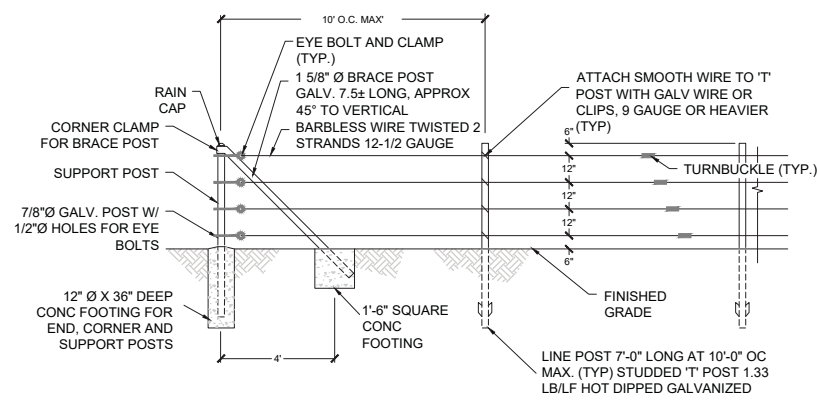
P:\2017\1700167\_NORTH\_COAST\_TRAILS\QAQ\SHEETS\1700167\_GRANT\_PROGRESS\_SHEETS.DWG PLOT DATE: 9/20/2020 PLOT STYLE: ... IF BAR DOES NOT MEASURE 1\"/>



1 10' PIPE GATE  
Scale = NTS



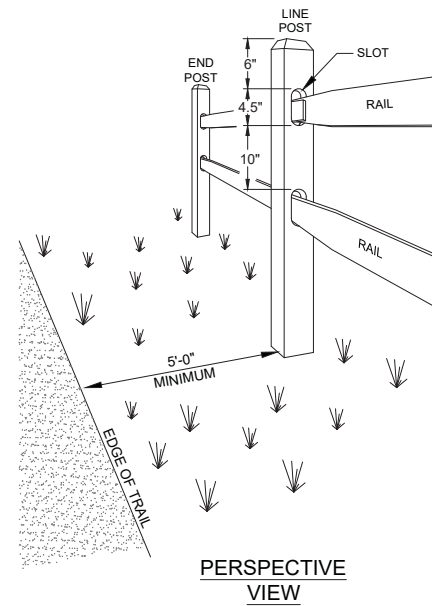
2 GRAPESTAKE FENCE  
Scale = NTS



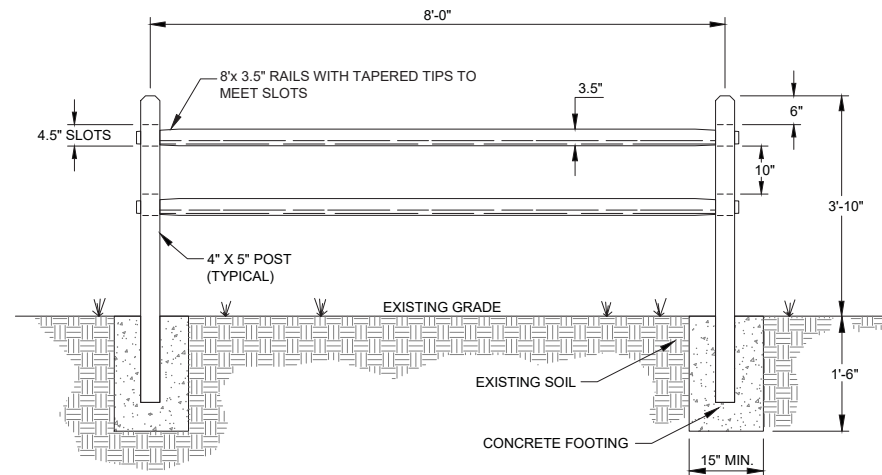
STANDARD FIELD FENCE (SMOOTH-WIRE FENCE) NOTES:

1. ALL POSTS, BRACES AND FITTINGS SHALL BE HOT DIPPED GALVANIZED.
2. CONCRETE SHALL BE COMMERCIAL CONCRETE, 5 SACK MIX.
3. WIRE SHALL BE TWISTED 2 STRANDS 12-1/2 GAUGE.
4. BRACE POSTS ARE REQUIRED ON EACH SIDE OF SUPPORT POSTS AT CORNER.
5. SUPPORT POSTS REQUIRED AT ENDS AND CORNERS.
6. SUPPORT POSTS SHALL BE LOCATED 100' O.C. MAX FOR STRAIGHT RUNS, WITH BRACE POSTS ON EACH SIDE OF SUPPORT POSTS, AT ALL TURNS AND ANGLES.
7. 'T' POSTS SHALL WEIGH 1.33 POUNDS PER LINEAR FOOT AND BE HOT DIPPED GALVANIZED.
- 'T' POSTS SHALL BE DRIVEN TO THE DEPTH INDICATED ON DRAWING IN ALL SOILS, HOWEVER NO BENT OR DAMAGED POSTS SHALL BE ACCEPTED.

3 STANDARD FIELD FENCE  
Scale = NTS



PERSPECTIVE VIEW



FRONT VIEW

NOTES:

1. ALL WOOD FOR SPLIT RAIL FENCE TO BE WESTERN CEDAR.
2. END POST SHALL BE TERMINAL POST.
3. MINIMUM 5 FEET CLEAR BETWEEN FENCE & TRAIL EDGE.

4 SPLIT-RAIL FENCE  
Scale = NTS

30 % DESIGN PLANS - NOT FOR CONSTRUCTION

NORTH COAST TRAILS PROJECT  
STEWARTS POINT TRAIL & KASHIA TRAIL  
SONOMA REGIONAL PARKS



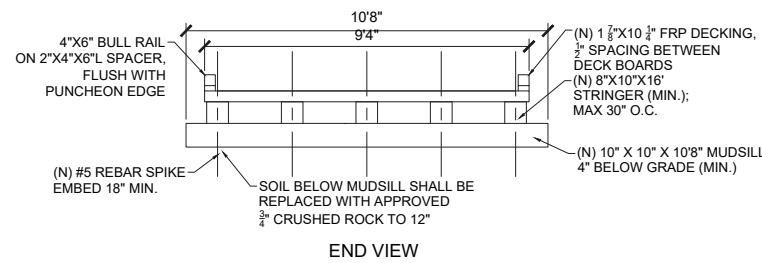
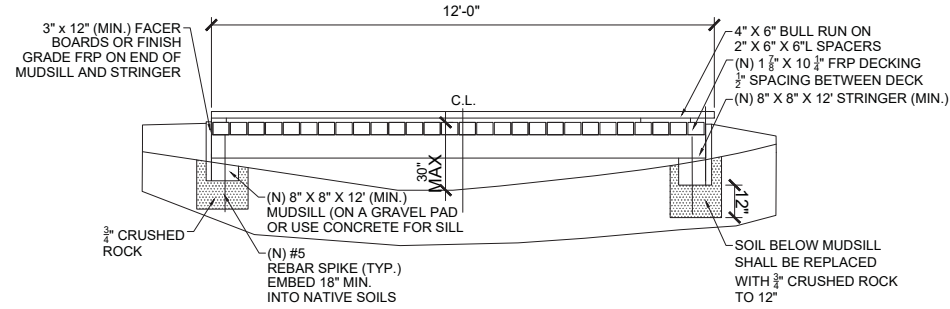
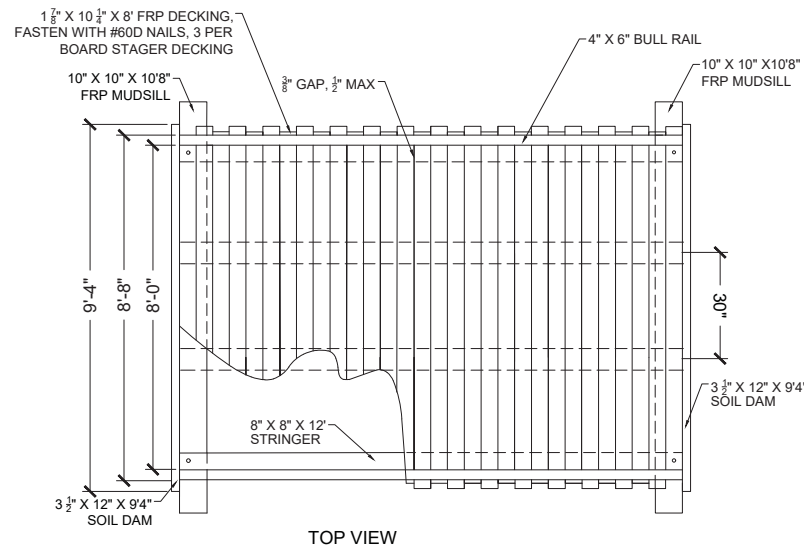
Sht.	Rev.	Date:	By:	Description:	App'd:

Design:	MH
Drawn:	CC
Checked:	JP
App'd:	XXX

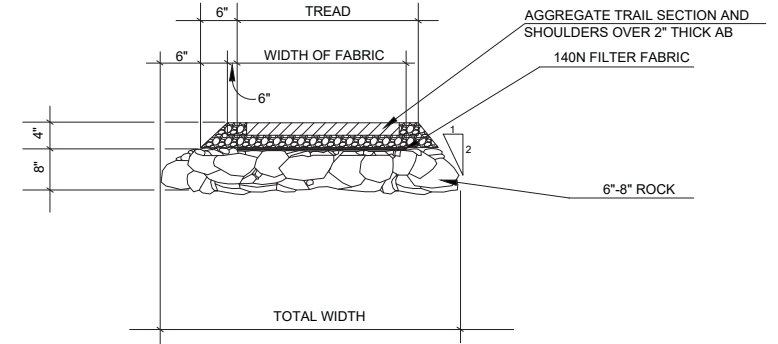
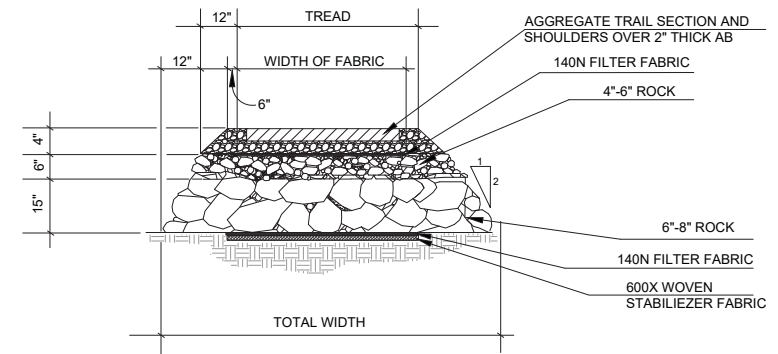
NORTH COAST TRAILS PROJECT  
FENCE & GATE DETAILS

STEWARTS POINT, CA

Size	Project
D	1700167
Scale:	NOT TO SCALE
Date:	4/26/21
Sheet:	11 OF 15

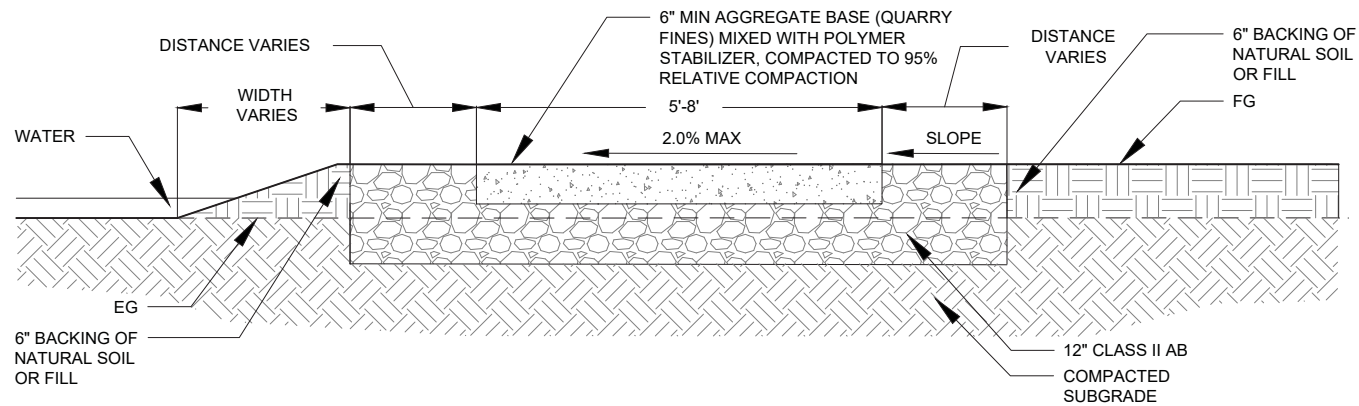


- NOTES:
- MUDSILLS AND SOIL DAMS IN CONTACT WITH EARTH SHALL BE SELECT STRUCTURED GRADE DOUGLAS FIR. DECKING SHALL BE 10 1/2\"/>



**1 PUNCHEON BRIDGE**  
Scale = NTS

**2 DRAINAGE LENSES**  
Scale = NTS



**3 HIKING TRAIL SECTION**  
Scale = NTS

**30 % DESIGN PLANS - NOT FOR CONSTRUCTION**

**NORTH COAST TRAILS PROJECT**  
STEWARTS POINT TRAIL & KASHIA TRAIL  
SONOMA REGIONAL PARKS



Sht	Rev	Date	By	Description	App'd

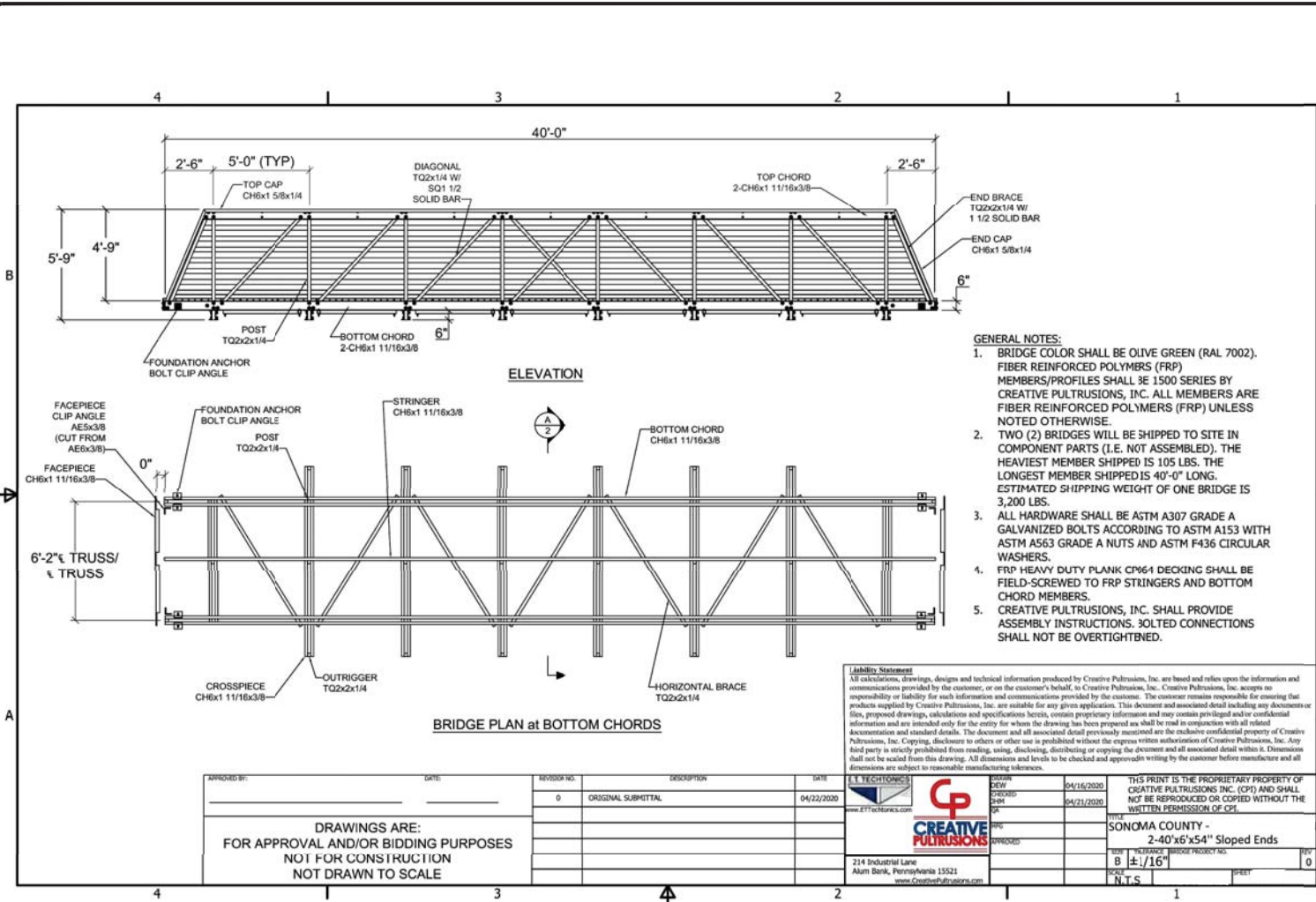
Design:	MH
Drawn:	CC
Checked:	JP
Appr'd:	XXX

**NORTH COAST TRAILS PROJECT**  
PUNCHEON, DRAINAGE LENSES, & SECTION

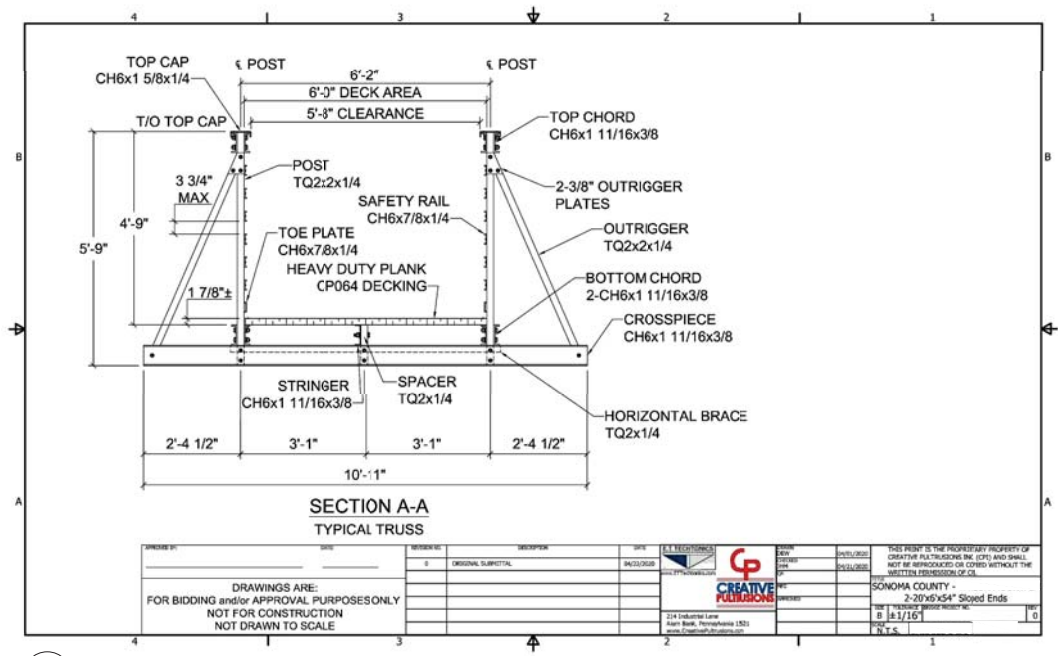
STEWARTS POINT, CA

Size D	Project 1700167
Scale:	NOT TO SCALE
Date:	4/26/21
Sheet:	12 OF 15

P:\2017\1700167\_NORTH\_COAST\_TRAILS\CAD\SHEETS\1700167\_GRANT\_PROGRESS\_SHEETS.DWG PLOT DATE: 9/30/2020 PLOT STYLE: s...  
 IF BAR DOES NOT MEASURE 1" DRAWING IS NOT TO SCALE - ADJUST ACCORDINGLY

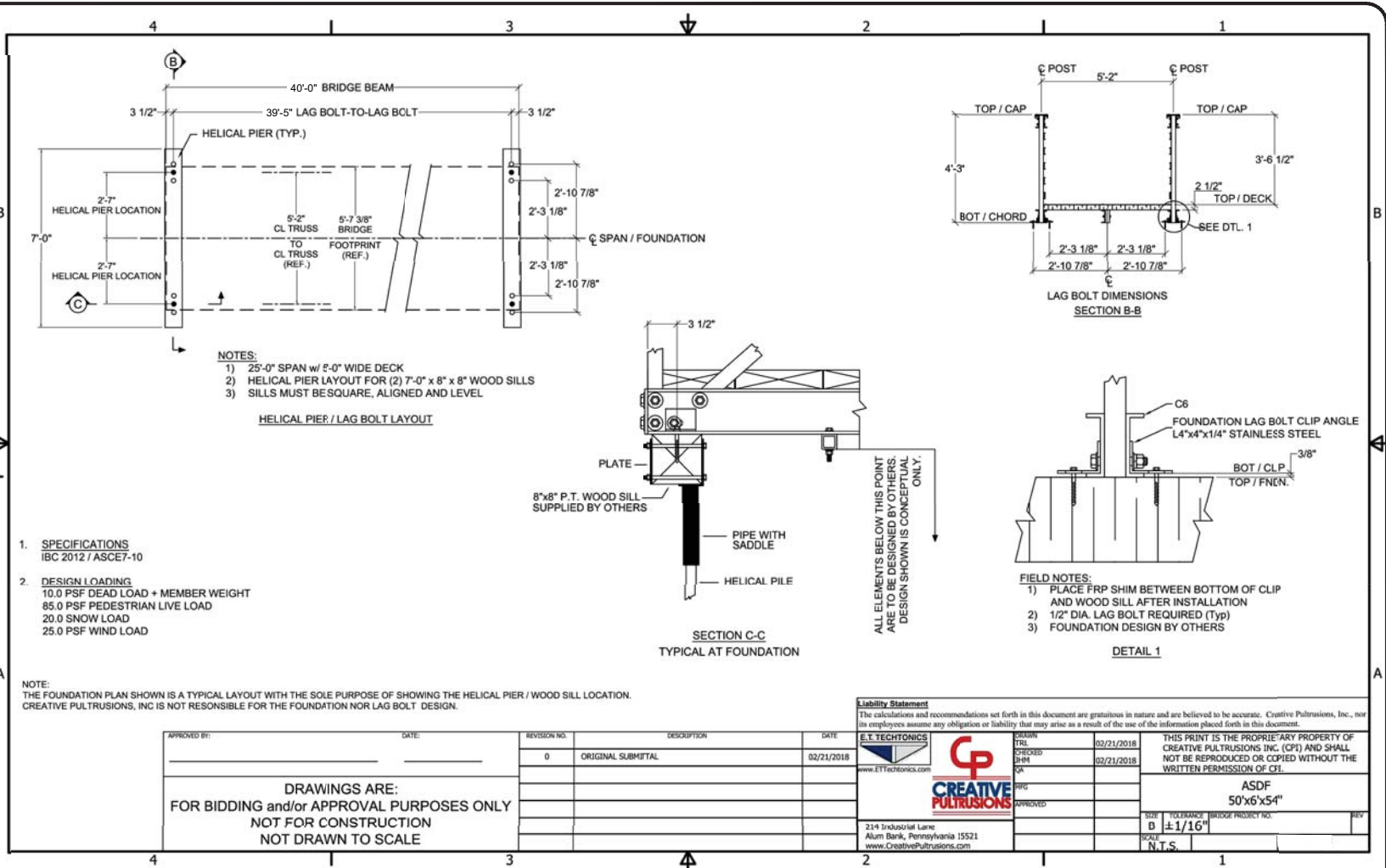


1 40' BRIDGE ELEVATION AND PLAN  
Scale = NTS



3 TYPICAL TRUSS  
Scale = NTS

30 % DESIGN PLANS - NOT FOR CONSTRUCTION



2 40' BRIDGE DETAILS  
Scale = NTS

**NORTH COAST TRAILS PROJECT**  
STEWARTS POINT TRAIL & KASHIA TRAIL  
SONOMA REGIONAL PARKS



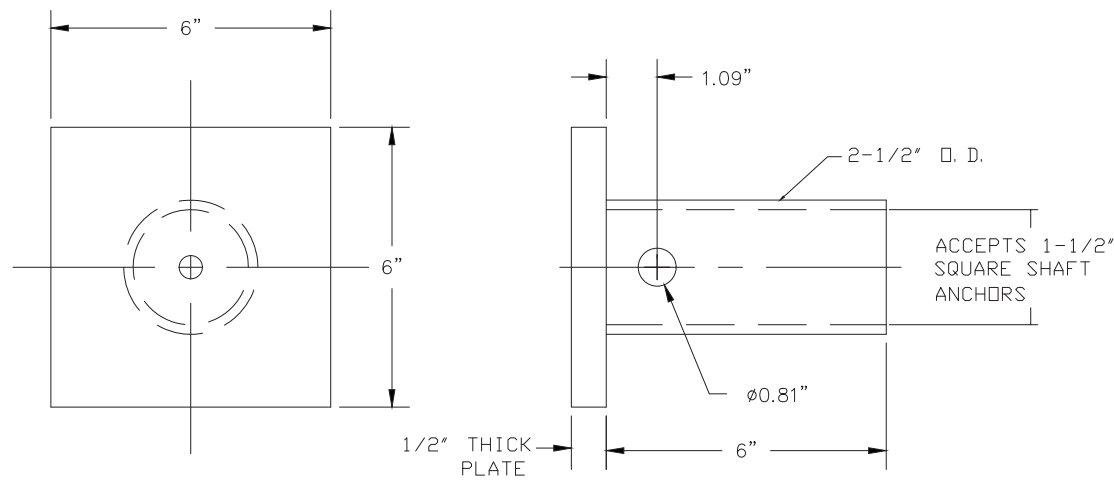
Sht	Rev	Date	By	Description	App'd

Design: MH  
Drawn: CC  
Checked: JP  
Appr'd: XXX

**NORTH COAST TRAILS PROJECT**  
40' BRIDGE DETAILS  
STEWARTS POINT, CA

Size D Project 1700167  
Scale: NOT TO SCALE  
Date: 4/26/21  
Sheet: 13 OF 15

LAST SAVED: 9/30/2020 PLOT DATE: 9/30/2020 PLOT STYLE: ...

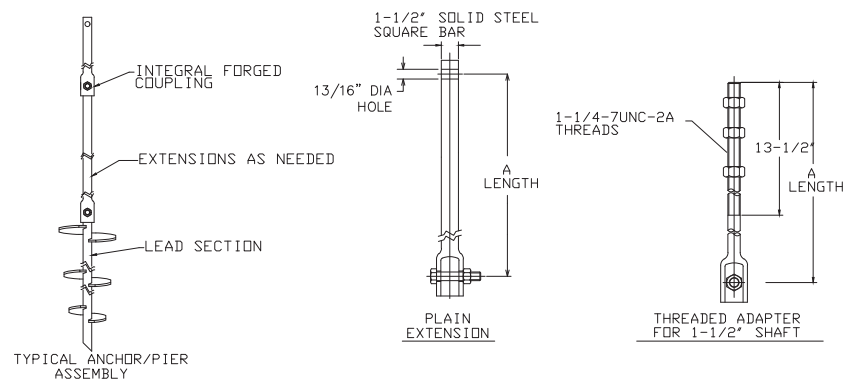


COUPLING BOLT AND NUT			
BOLT DIA.	BOLT LENGTH (MIN.)	BOLT GRADE	NUT
3/4"	4.25"	ASTM A325 TYPE 1	3/4", MATCHING HEX NUT

==NOTES==

1. FINISH: HOT DIP GALVANIZED PER ASTM-A153 (LATEST REVISION)
2. MATERIAL SPECIFICATIONS:  
PIPE: BLACK UNCOATED ROUND STEEL TUBE PER ASTM A513 TYPE 5, GRADE 1026.  
PLATE: PER ASTM A572 GRADE 50.
3. TENSION RATING VALID ONLY IF USING COUPLING BOLT AND NUT SPECIFIED IN CHART BELOW OR THEIR MECHANICAL EQUIVALENT.
4. THESE ABOVE RATINGS ARE VALID ONLY IF THE PIER CAP DETAIL HAS BEEN DESIGNED TO ENSURE ADEQUATE LOAD TRANSFER FROM REINFORCED CONCRETE FOUNDATION TO SCREW PIER, AND IN ACCORDANCE WITH EXISTING LOCAL CODE REQUIREMENTS AND /OR ESTABLISHED LOCAL PRACTICES.

1 PIER CAP Scale = NTS

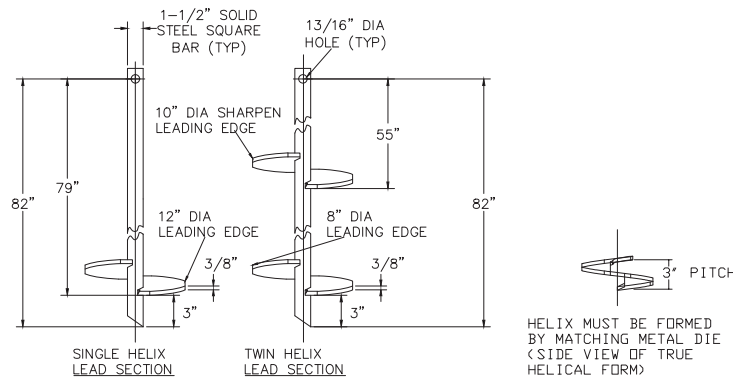


==NOTES==

1. HOT DIP GALVANIZED PER ASTM A153-(LATEST REVISION).
2. LEAD AND EXTENSION SECTION LENGTHS AND HELIX SPACINGS ARE NOMINAL.
3. SHAFT MATERIAL-HOT ROLLED ROUND-CORNERED-SQUARE (RCS) SOLID STEEL BARS PER ASTM A29; MINIMUM YIELD STRENGTH=70 KSI.
4. COUPLING BOLTS: 3/4" DIAMETER X 3" LONG HEX HEAD PER ASTM A320 GRADE L7.
5. MANUFACTURER TO HAVE IN EFFECT INDUSTRY RECOGNIZED WRITTEN QUALITY CONTROL FOR ALL MATERIALS AND MANUFACTURING PROCESSES.
6. ALL WELDING TO BE DONE BY WELDERS CERTIFIED UNDER SECTION 5 OF THE AWS CODE D1.1.
7. SEE ICC EVALUATION SERVICE INC., EVALUATION REPORT NO. ER-5110 FOR ALLOWABLE VALUES AND/OR CONDITIONS OF USE CONCERNING MATERIAL PRESENTED IN THIS DOCUMENT.

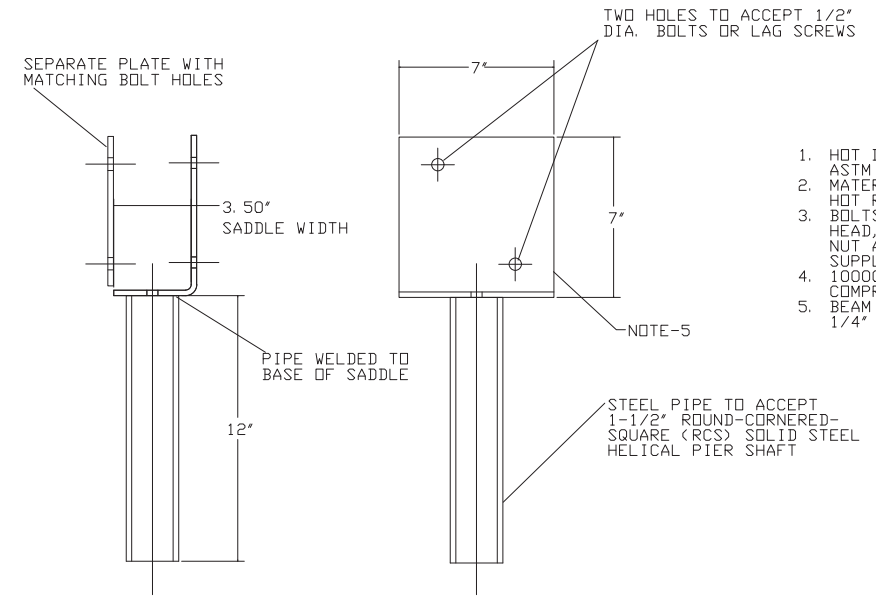
EXTENSION SECTION	
CAT. NO.	A
C150-0144	38"
C150-0145	59"
C150-0146	81"
C150-0175	124"
C150-0032	20"
C114-0009	11"

4 EXTENSION AND ADAPTER DETAILS Scale = NTS



2 LEAD SECTION DETAILS Scale = NTS

1. HOT DIP GALVANIZED PER ASTM A153-(LATEST REV.)
2. LEAD AND EXTENSION SECTION AND PILOT POINT LENGTHS ARE NOMINAL.
3. SHAFT MATERIAL-HOT ROLLED ROUND-CORNERED SQUARE (RCS) SOLID STEEL BARS PER ASTM A29; MINIMUM YIELD STRENGTH=70 KSI.
4. HELIX MATERIAL-HOT ROLLED LOW CARBON STEEL SHEET, STRIP, OR PLATE PER ASTM A656, OR A1018 GRADE 80; MINIMUM YIELD STRENGTH=80 KSI.
5. COUPLING BOLTS: 3/4" DIAMETER X 3" LONG HEX HEAD PER ASTM A320 GRADE L7.
6. NOMINAL SPACING BETWEEN HELICAL PLATES IS THREE TIMES THE DIAMETER OF THE LOWER HELIX.
7. MANUFACTURER TO HAVE IN EFFECT INDUSTRY RECOGNIZED WRITTEN QUALITY CONTROL FOR ALL MATERIALS AND MANUFACTURING PROCESSES.
8. ALL WELDING TO BE DONE BY WELDERS CERTIFIED UNDER SECTION 5 OF THE AWS CODE D1.1.



3 BEAM SEAT BRACKET Scale = NTS

NOTES-

1. HOT DIPPED GALVANIZED PER ASTM A-153.
2. MATERIAL FOR SADDLE: HOT ROLLED STEEL.
3. BOLTS: 1/2" DIA. HEX HEAD, 4-1/2" LONG WITH NUT AND LOCKWASHER. SUPPLIED BY OTHERS.
4. 10000 LB MAX LOAD COMPRESSION ONLY.
5. BEAM SADDLE FORMED FROM 1/4" THICK STEEL PLATE.

30 % DESIGN PLANS - NOT FOR CONSTRUCTION

NORTH COAST TRAILS PROJECT  
STEWARTS POINT TRAIL & KASHIA TRAIL  
SONOMA REGIONAL PARKS



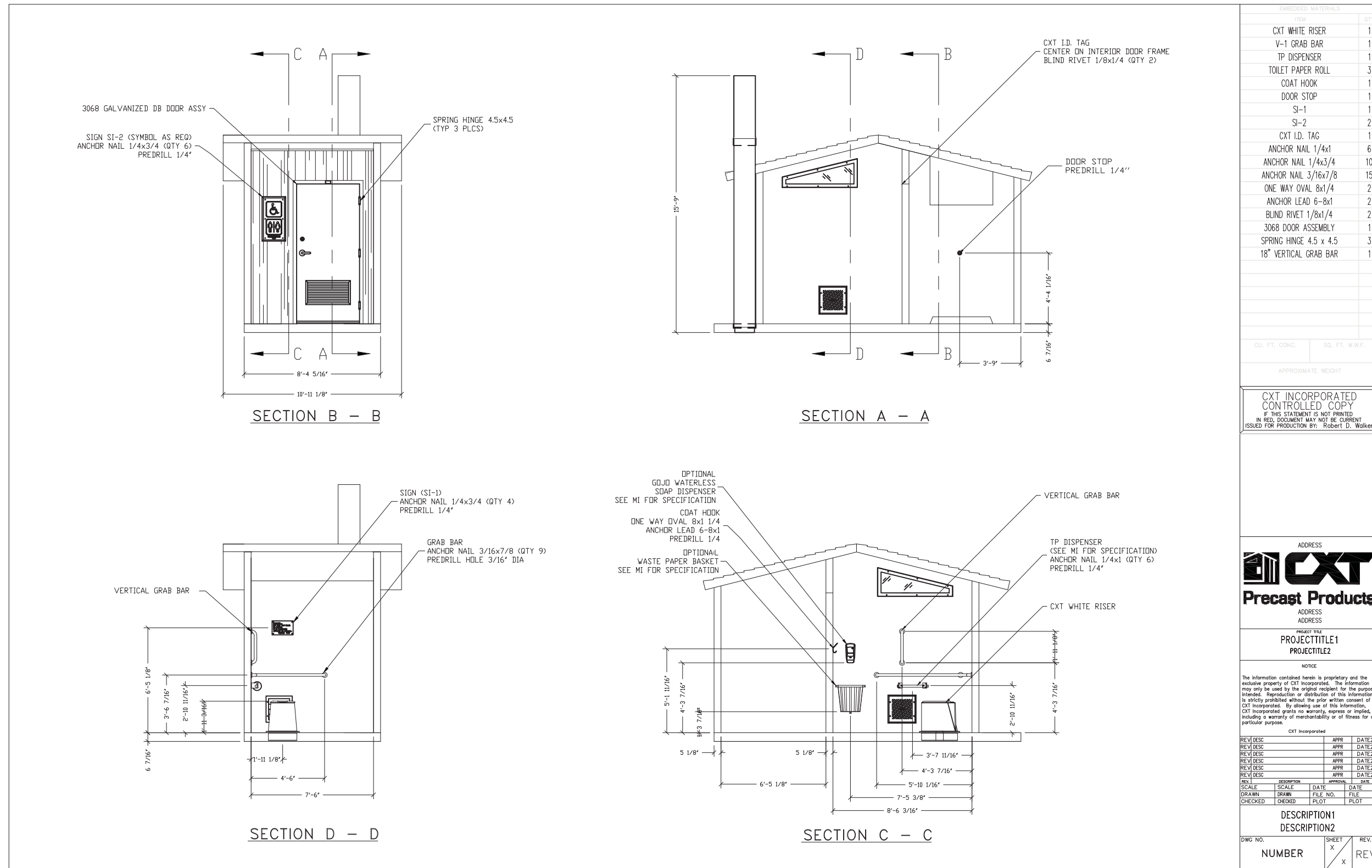
Sht	Rev	Date	By	Description	App'd

Design:	MH
Drawn:	CC
Checked:	JP
Appr'd:	XXX

NORTH COAST TRAILS PROJECT  
HELICAL PILE  
STEWARTS POINT, CA

Size D	Project 1700167
Scale:	NOT TO SCALE
Date:	4/26/21
Sheet:	14 OF 15

PA:\2017\1700167\_NORTH\_COAST\_TRAILS\QAQ\SHEETS\1700167\_GRANT\_PROGRESS\_SHEETS.DWG PLOT DATE: 9/30/2020 PLOT STYLE: s... IF BAR DOES NOT MEASURE 1" DRAWING IS NOT TO SCALE - ADJUST ACCORDINGLY



EMBEDDED MATERIALS	
ITEM	QTY
CXT WHITE RISER	1
V-1 GRAB BAR	1
TP DISPENSER	1
TOILET PAPER ROLL	3
COAT HOOK	1
DOOR STOP	1
SI-1	1
SI-2	2
CXT I.D. TAG	1
ANCHOR NAIL 1/4x1	6
ANCHOR NAIL 1/4x3/4	10
ANCHOR NAIL 3/16x7/8	15
ONE WAY OVAL 8x1/4	2
ANCHOR LEAD 6-8x1	2
BLIND RIVET 1/8x1/4	2
3068 DOOR ASSEMBLY	1
SPRING HINGE 4.5 x 4.5	3
18" VERTICAL GRAB BAR	1

CU. FT. CONC.	SG. FT. W.W.F.
APPROXIMATE WEIGHT	

CXT INCORPORATED  
CONTROLLED COPY  
IF THIS STATEMENT IS NOT PRINTED  
IN RED, DOCUMENT MAY NOT BE CURRENT  
ISSUED FOR PRODUCTION BY: Robert D. Walker

ADDRESS  
**CXT**  
Precast Products  
ADDRESS  
ADDRESS  
PROJECT TITLE  
PROJECTTITLE1  
PROJECTTITLE2

NOTICE  
The information contained herein is proprietary and the exclusive property of CXT Incorporated. The information may only be used by the original recipient for the purpose intended. Reproduction or distribution of this information is strictly prohibited without the prior written consent of CXT Incorporated. By allowing use of this information, CXT Incorporated grants no warranty, express or implied, including a warranty of merchantability or of fitness for a particular purpose.

REV	DESC	APPR	DATE

SCALE	SCALE	DATE	DATE
DRAWN	DRAWN	FILE NO.	FILE
CHECKED	CHECKED	PLOT	PLOT

DESCRIPTION1  
DESCRIPTION2

DWG NO.	SHEET	REV.
NUMBER	X	REV
	X	

1 VAULT TOILET Scale = NTS

30 % DESIGN PLANS - NOT FOR CONSTRUCTION

NORTH COAST TRAILS PROJECT  
STEWARTS POINT TRAIL & KASHIA TRAIL  
SONOMA REGIONAL PARKS

**QUESTA**  
ENGINEERING CORP.  
Civil Environmental & Water Resources  
(510) 236-6114  
FAX (510) 236-2423  
questa@questacorp.com  
P.O. Box 70356 1220 Brickyard Cove Road Point Richmond, CA 94807

Sht	Rev	Date	By	Description	App'd

Design: MH  
Drawn: CC  
Checked: JP  
App'd: XXX

NORTH COAST TRAILS PROJECT  
VAULT TOILET  
STEWARTS POINT, CA

Size D Project 1700167  
Scale: NOT TO SCALE  
Date: 4/26/21  
Sheet: 15 OF 15

LAST SAVED: 9/30/2020 PLOT DATE: 9/30/2020 PLOT STYLE: ----- PLOT: 1700167\_NORTH\_COAST\_TRAILS\_VAULT\_TOILET\_SHEETS\1700167\_GRANT\_PROGRESS\_SHEETS.DWG