



***Crafting  
Sonoma  
County's New  
Cannabis  
Program:***

***Water  
Considerations***

**Virtual Visioning  
Session  
August 11, 2021**







## **Why are we conducting these Visioning Sessions?**

- 1. Develop a comprehensive update to the existing cannabis ordinance based on community input and a thorough Environmental Impact Report (EIR) (Sonoma County Board of Supervisors, June 8, 2021)***
- 2. The Supervisors have requested community engagement to inform the policy goals they will develop at their September 28 workshop.**
- 3. Visioning session topics: Land Use, Safety, Water, and Visual Considerations—the 4 most significant aspects of how a cannabis program impacts the community.**

# New Sonoma County Cannabis Program Project Timeline





## **Community Contributors Introducing Our Topics**

**David Kuszmar,  
Regional Water Quality  
Control Board**

**Rob Aguero,  
Registered Professional  
Forester, Permit Sonoma**

**Andy Casarez,  
Sonoma County  
Department of Agriculture /  
Weights & Measures**

**Mia Bianchi,  
California Department of  
Fish and Wildlife**



**Visioning Session  
Team**

**Crystal Acker,  
Cannabis Project  
Manager**

**Scott Orr, Permit  
Sonoma, Deputy  
Director**

**Patrick Dirden,  
Timer &  
PowerPoint**

**McCall Miller,  
CAO's Office,  
Tech Director &  
Email Monitor**

**Julie Burns,  
Spanish  
Interpreter**

**Daniel Tamayo,  
Spanish  
Interpreter**

**B.J. Bischoff,  
Co-Facilitator**

**Sarah Stierch,  
Co-Facilitator**

# Visioning Session Procedures

*Cannabis@  
sonoma-  
county.org*



Place all comments in the Q&A. We're saving the Chat to provide information for you, as needed.



We've de-activated the UpVote function (thumbs up). Reply directly to comments you like or disagree with.



If you cannot access us via Zoom, email us: [cannabis@sonoma-county.org](mailto:cannabis@sonoma-county.org)



Your comments will be summarized and presented to the Board of Supervisors



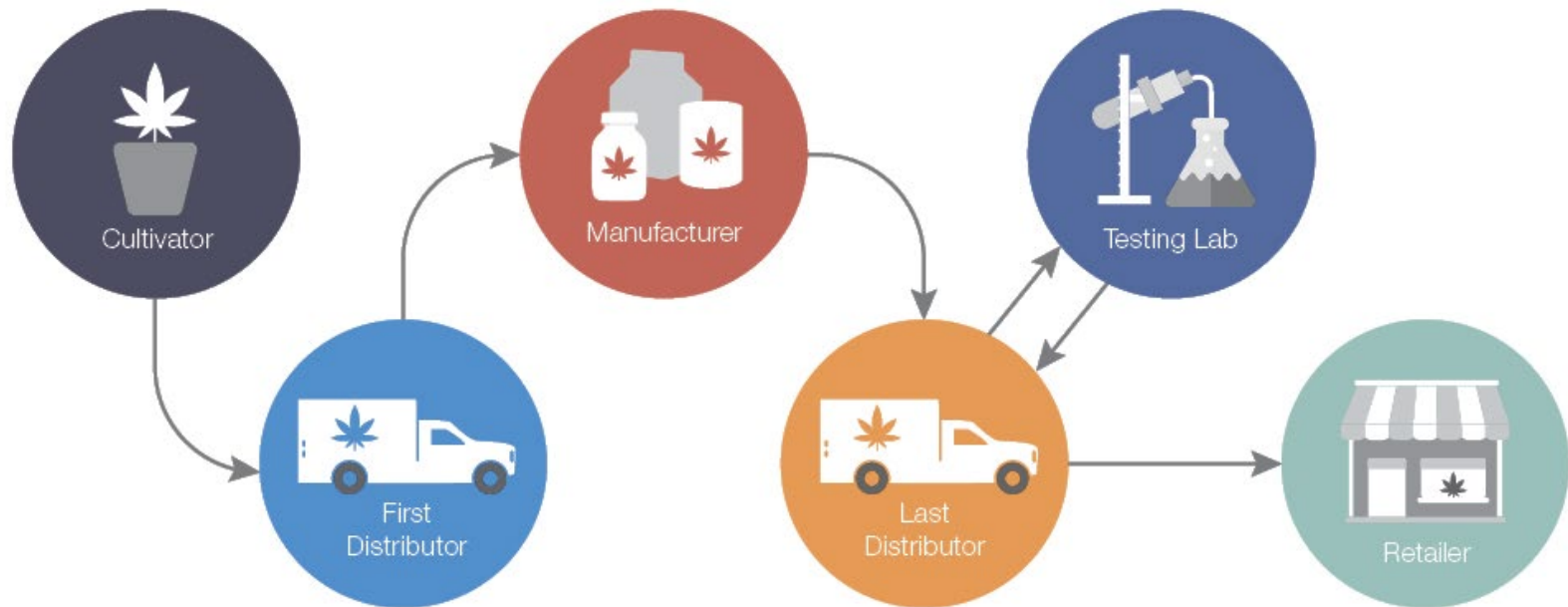
Today's session is being recorded



Please use respectful language.

# Cannabis Supply Chain

## The Cannabis Supply Chain in California



**Our shared values  
shape our future.**



**Water resources that we  
should protect**

**Protecting habitats and  
species**

**Protecting riparian  
corridors**

**Water conservation**

**Drought planning**

**Accountability**



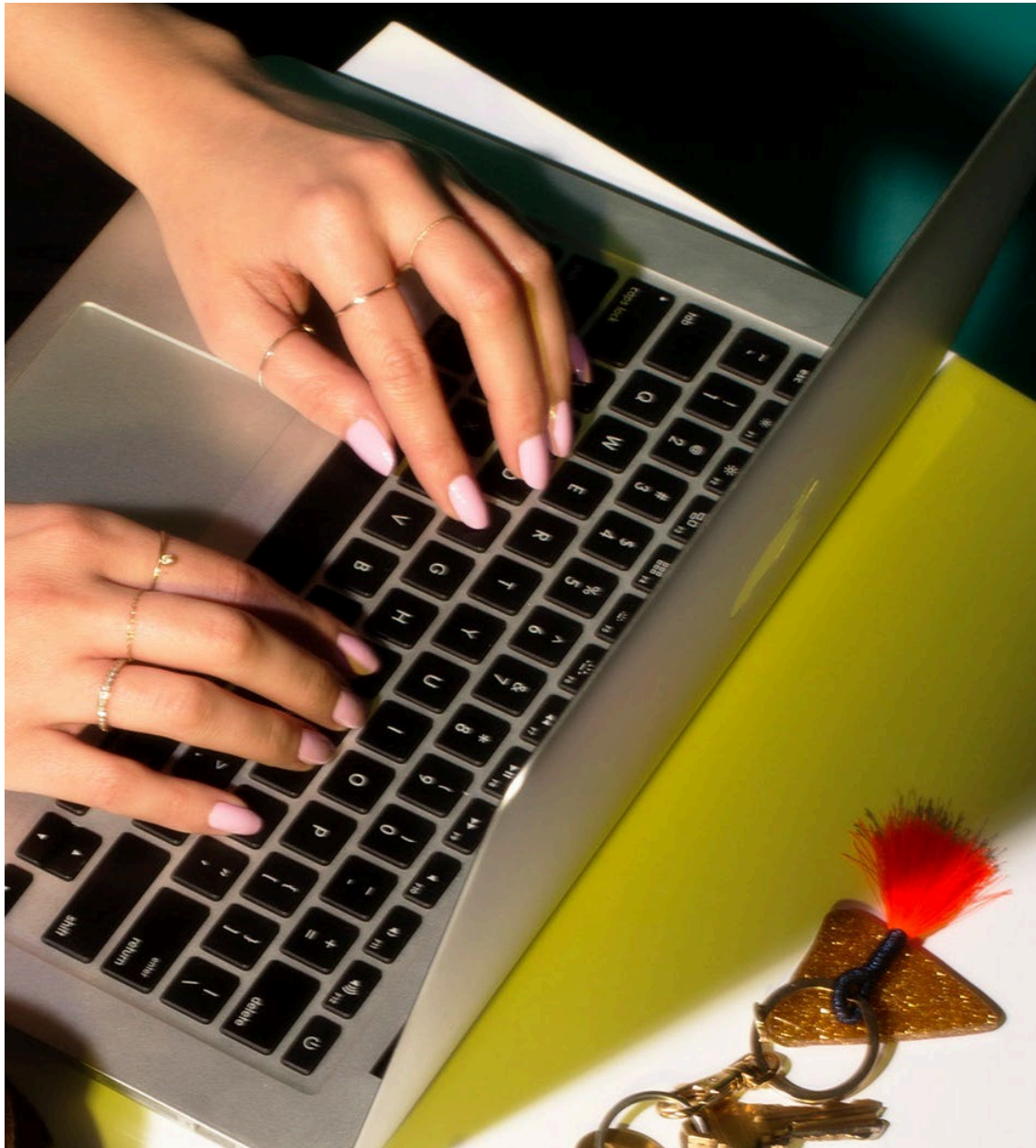
**Water is a precious resource that we all need.**



## **Primary water sources**

- **Surface water from rivers, streams, and lakes**
- **Groundwater**

**Most irrigation comes from groundwater**



## *Community Comments*

What do you think are the most important water resources that we need to protect as we develop the guidelines for the cannabis program?





# How should we protect our water?



**Groundwater availability areas**

**Special exclusion zones**

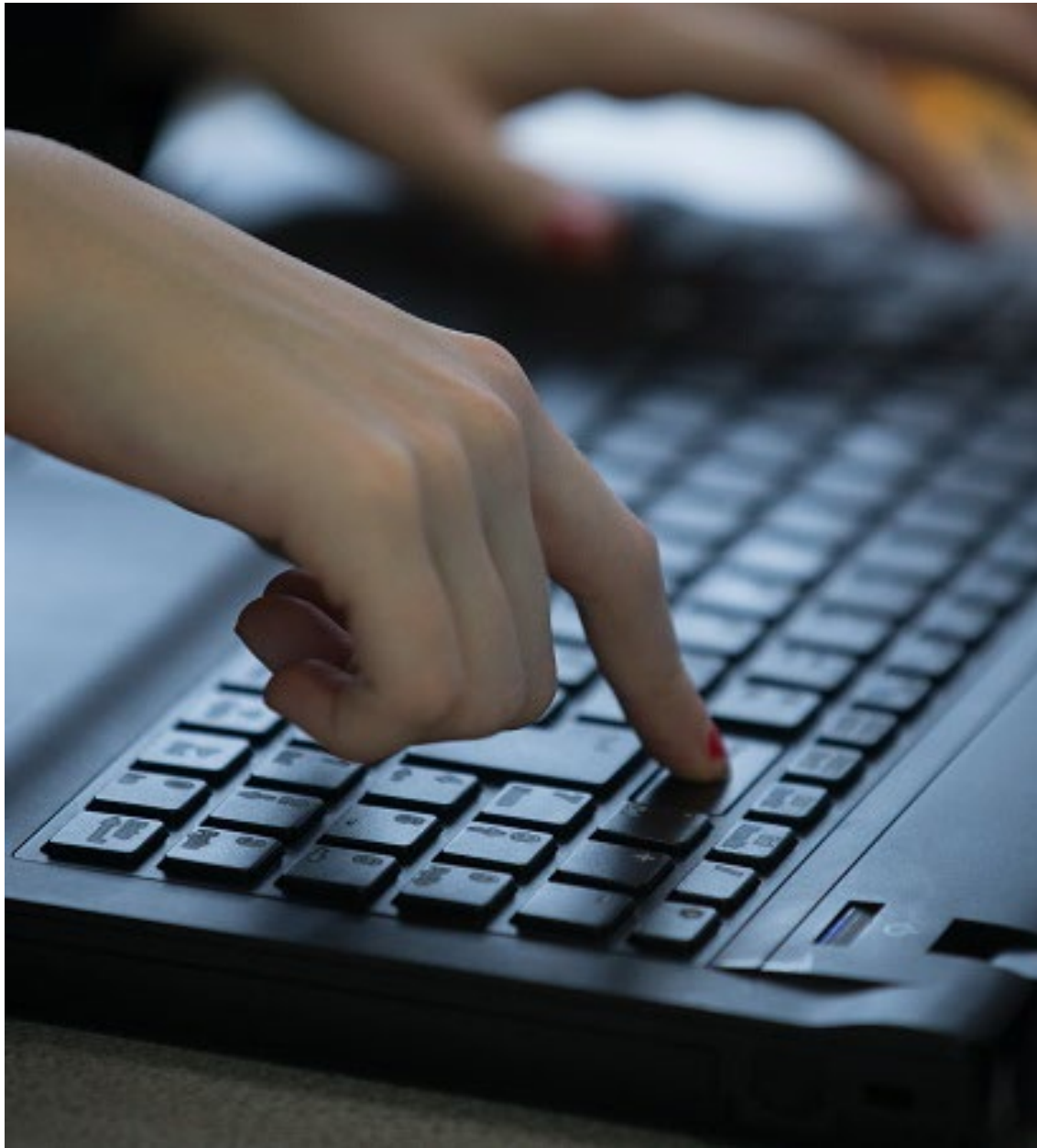
**Project-specific analysis**

**Limits on the number of issued permits or gallons used**

**Setbacks from surface waters**

**Runoff control**





## *Community Comments*

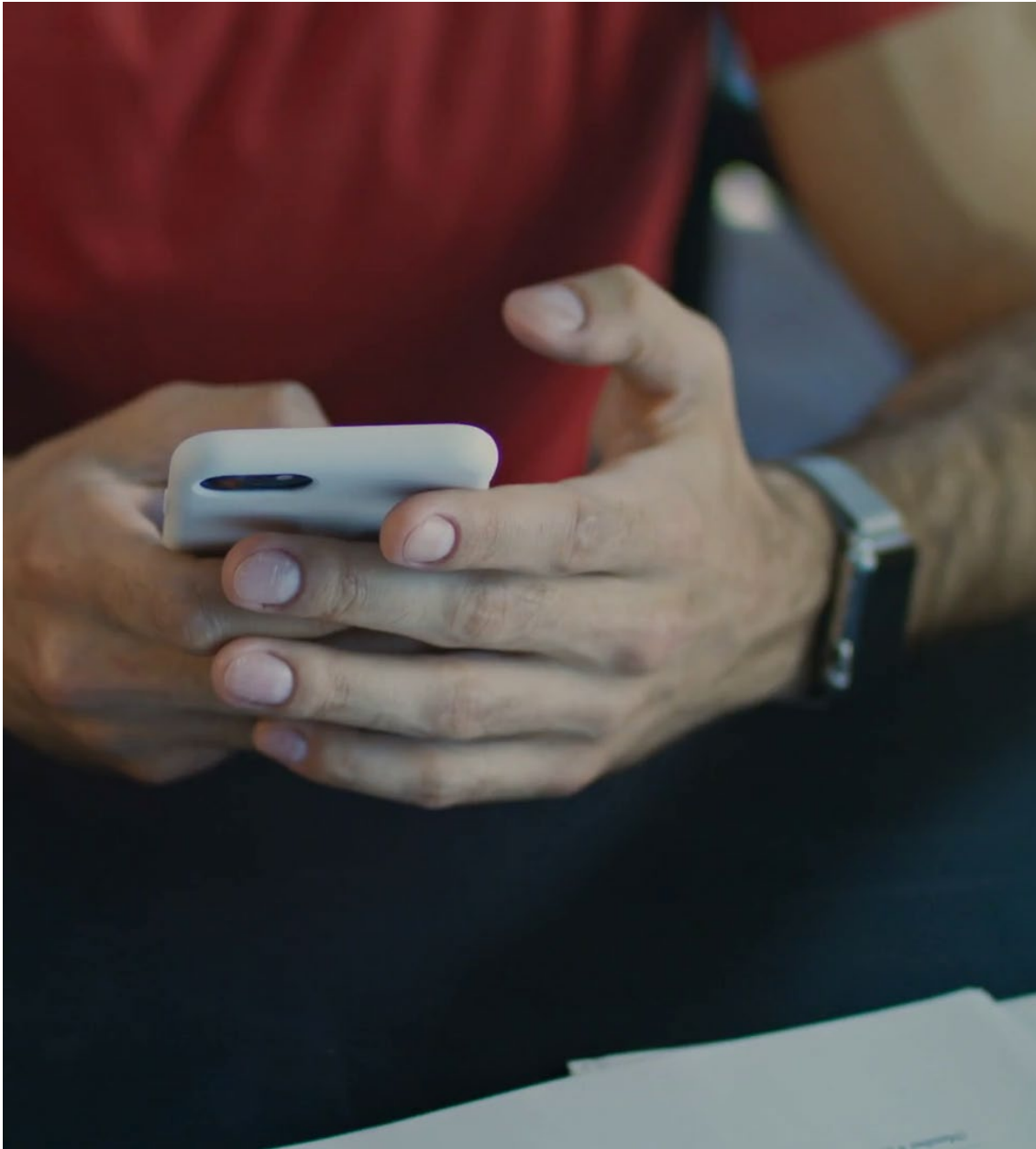
**What would a  
successful cannabis  
operation look like  
that protects our  
water resources?**





**We need to consider  
the impact to natural  
habitats and species.**

- **Critical Habitat**
- **Other important habitats and watersheds**
- **Exclusion zones**
- **Setbacks from special habitats**
- **Water conservation strategies**



## *Community Comments*

**What would  
successfully  
protecting natural  
habitats and species  
look like when it  
comes to cannabis  
cultivation?**





**We need to consider ways to protect riparian corridors.**



**Vegetation removal**

**Reduced streamflow**

**Water quality**

**Setbacks from streams**



## *Community Comments*

**What would  
successfully  
protecting riparian  
corridors look like  
when it comes to  
cannabis cultivation?**



**How should we  
conserve this precious  
resource?**



**Efficient irrigation  
practices using drip  
and/or hand  
watering**

**Rainwater capture  
with tank storage**

**Capture and reuse  
of dehumidifier and  
AC condensate**

**Cultivation methods**





## *Community Comments*

**What would  
successful water  
conservation  
efforts for  
cannabis  
cultivation look  
like in normal  
years?**



# What do we do in times of drought?



**Water saving  
cultivation practices**

**Water use planning**

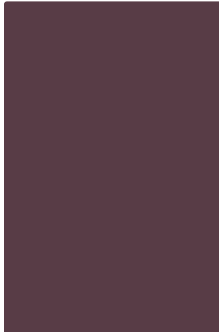
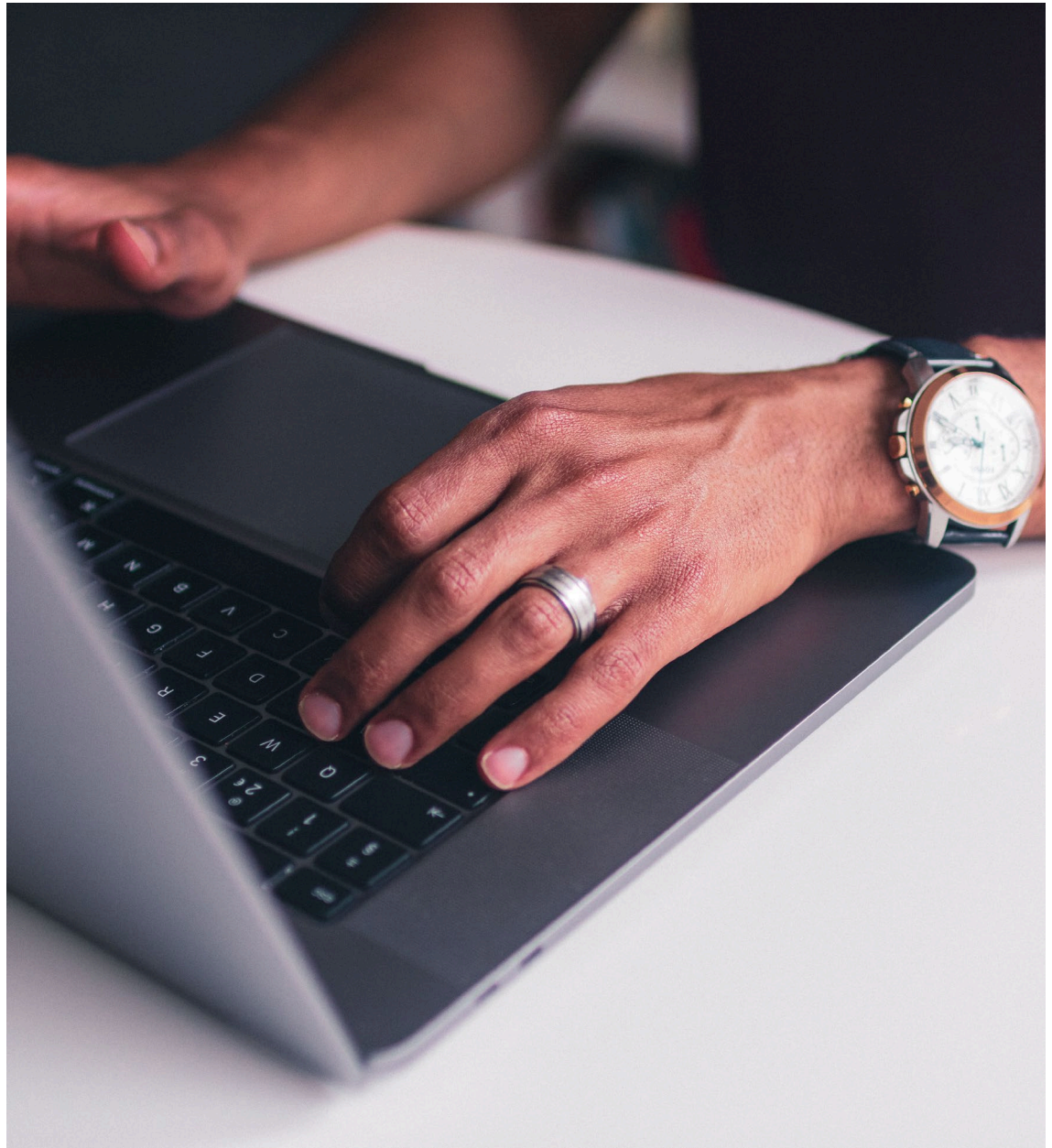
**Canopy reduction**

**Storage**



## *Community Comments*

*What would a  
successful approach  
to a drought look  
like for cannabis  
cultivation in the  
county?*





**Accountability is key  
to our success.**



**How should we  
monitor  
groundwater usage?**

**Method  
Frequency  
Reporting**

**How should we  
verify compliance  
with conditions and  
standards?**

**Inspections  
Self-reporting**



## *Community Comments*

1. What does successful accountability look like when it comes to water and cannabis?
2. What would it mean to hold cannabis growers accountable?





## *Community Comments*

*What additional thoughts do you have about the water aspects of a successful cannabis program?*





Please send comments by 8 pm,  
August 13, 2021, for them to be  
included in the Visioning  
Sessions Report for the Board.



**cannabis@  
Sonoma-county.  
org**

**US Mail:**

***Cannabis Program  
575 Administration  
Drive Ste. 104-A  
Santa Rosa, CA  
95403***

**Please stay  
informed by  
subscribing to:**

***sonomacounty.ca.gov  
/Cannabis-Program***