



***Crafting
Sonoma
County's New
Cannabis
Program:***

Safety Concerns

**Virtual Visioning
Session
August 10, 2021**

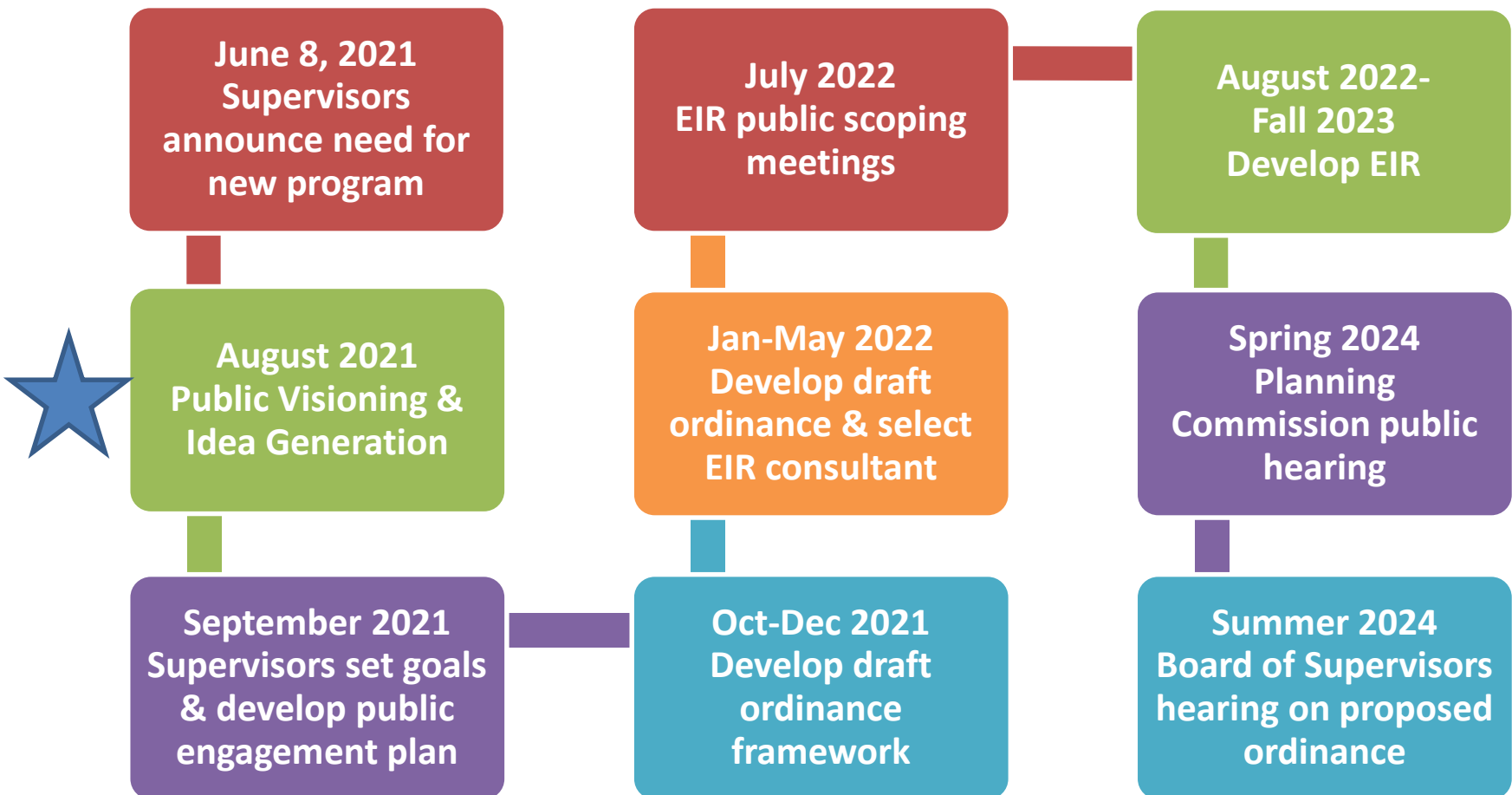




Why are we conducting these Visioning Sessions?

- 1. Develop a comprehensive update to the existing cannabis ordinance based on community input and a thorough Environmental Impact Report (EIR) (Sonoma County Board of Supervisors, June 8, 2021)***
- 2. The Supervisors have requested community engagement to inform the policy goals they will develop at their September 28 workshop.**
- 3. Visioning session topics: Land Use, Safety, Water, and Visual Considerations—the 4 most significant aspects of how a cannabis program impacts the community.**

New Sonoma County Cannabis Program Project Timeline





Sonoma County Staff Introducing Our Topics

**Steve Mosiurchak,
Sonoma County Fire
Marshal**

**Jason Lucas,
Sonoma County
Sheriff's office**

**Maggie Furlong,
Sonoma County
Department of
Agriculture / Weights
& Measures**

**Visioning Session
Team**

**Crystal Acker,
Cannabis Project
Manager**

**Scott Orr, Permit
Sonoma, Deputy
Director**

**Patrick Dirden,
Timer &
PowerPoint**

**McCall Miller,
CAO's Office,
Tech Director &
Email Monitor**

**Julie Burns,
Spanish
Interpreter**

**Daniel Tamayo,
Spanish
Interpreter**

**B.J. Bischoff,
Co-Facilitator**

**Sarah Stierch,
Co-Facilitator**

Visioning Session Procedures

*Cannabis@
sonoma-
county.org*



Place all comments in the Q&A. We're saving the Chat to provide information for you, as needed.



We've de-activated the UpVote function (thumbs up). Reply directly to comments you like or disagree with.



If you cannot access us via Zoom, email us: cannabis@sonoma-county.org



Your comments will be summarized and presented to the Board of Supervisors



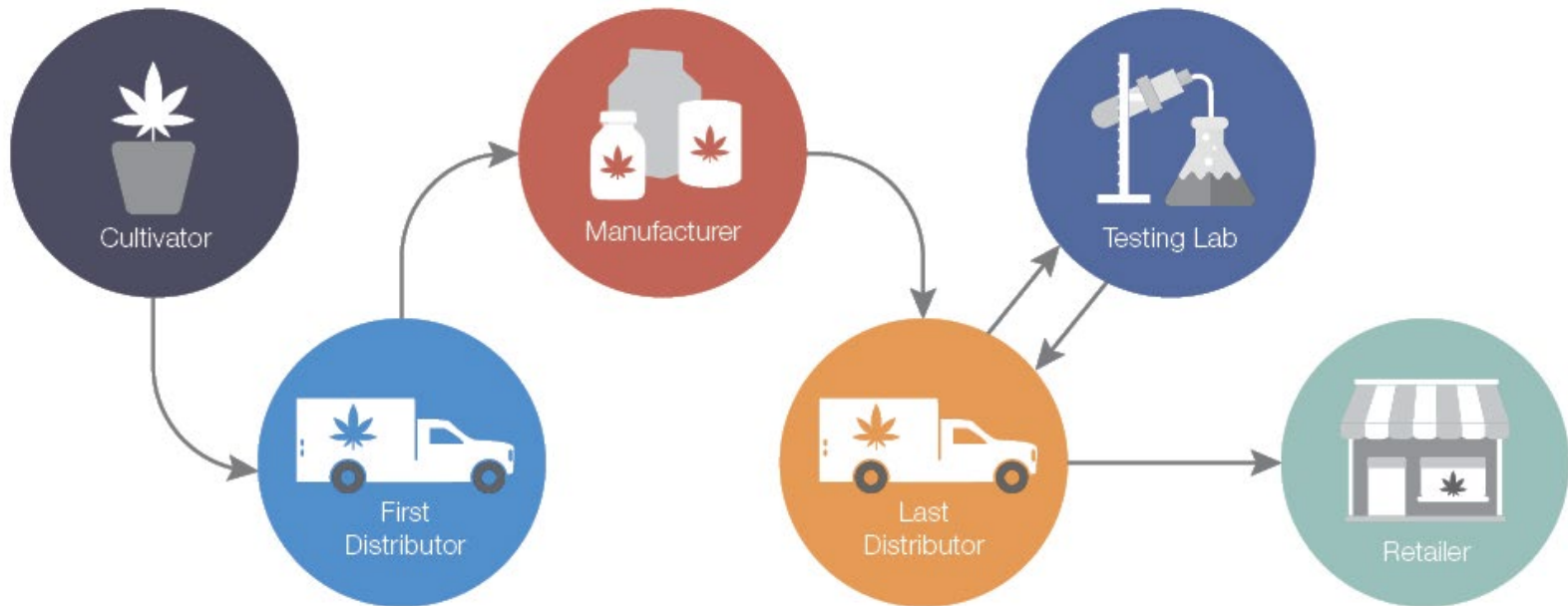
Today's session is being recorded



Please use respectful language.

Cannabis Supply Chain

The Cannabis Supply Chain in California



**Our shared values
shape our future.**



Emergencies

Public safety

Security

**On-site
consumption**

Accountability

We need to create a cannabis program that prepares us for inevitable emergencies.

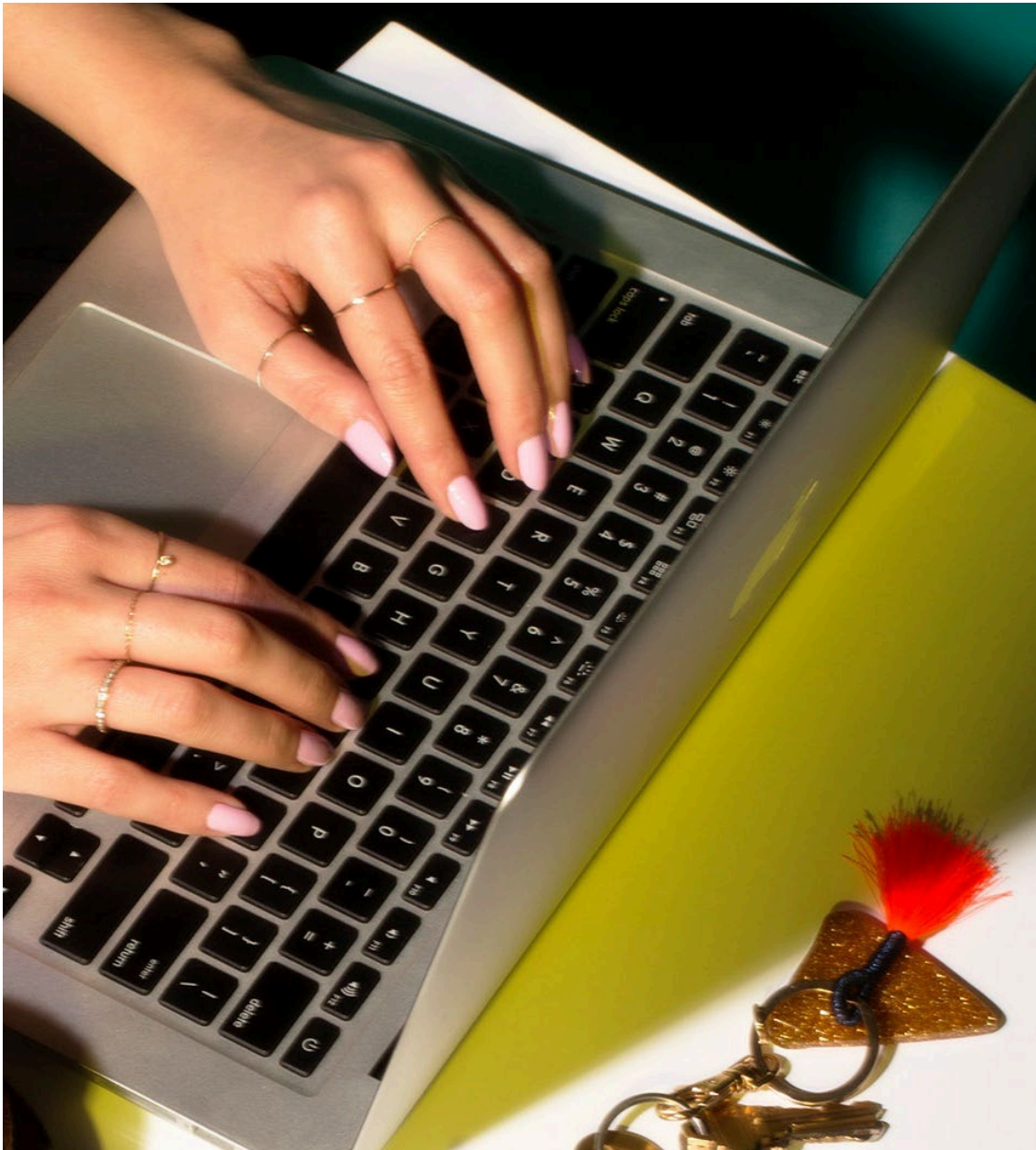


Wildfire

**Fire Hazard
Severity Zones**

**State vs. Local
Responsibility
Areas**

**Emergency
Access**



Community Comments

1. What would safe cultivation look like when it comes to emergencies like wildfire?

2. What characteristics would make cultivation unsafe in an emergency?

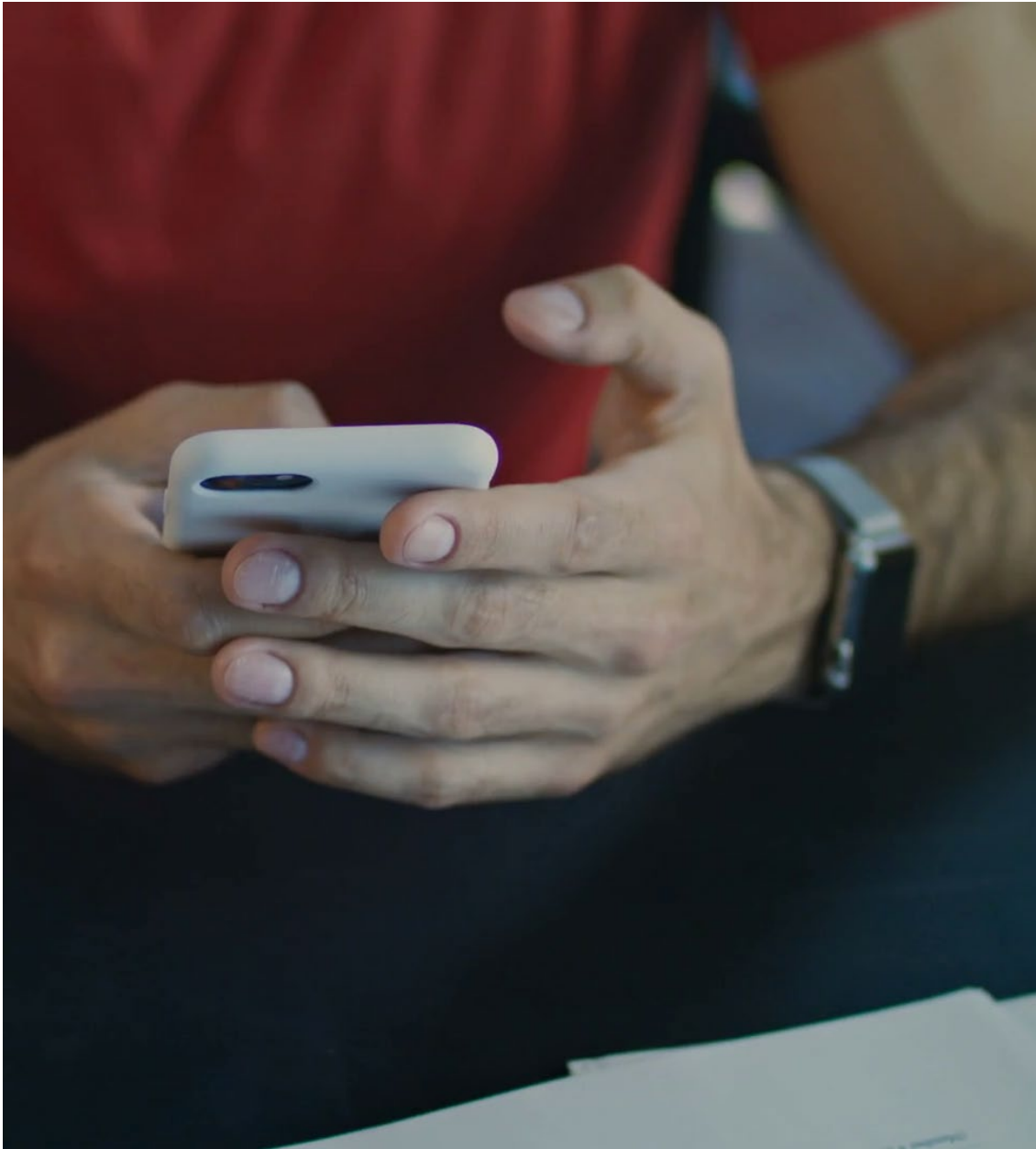


Growing operations should be safe & secure.



Effective Site Security

- Assess security risk
- Protection-Physical barriers
- Detection-Alert/Notification technology
- Verification-Video/audio monitoring systems
- Reaction-Response



Community Comments

**What would a safe
and secure
cannabis growing
operation look like
in a successful
cannabis
program?**



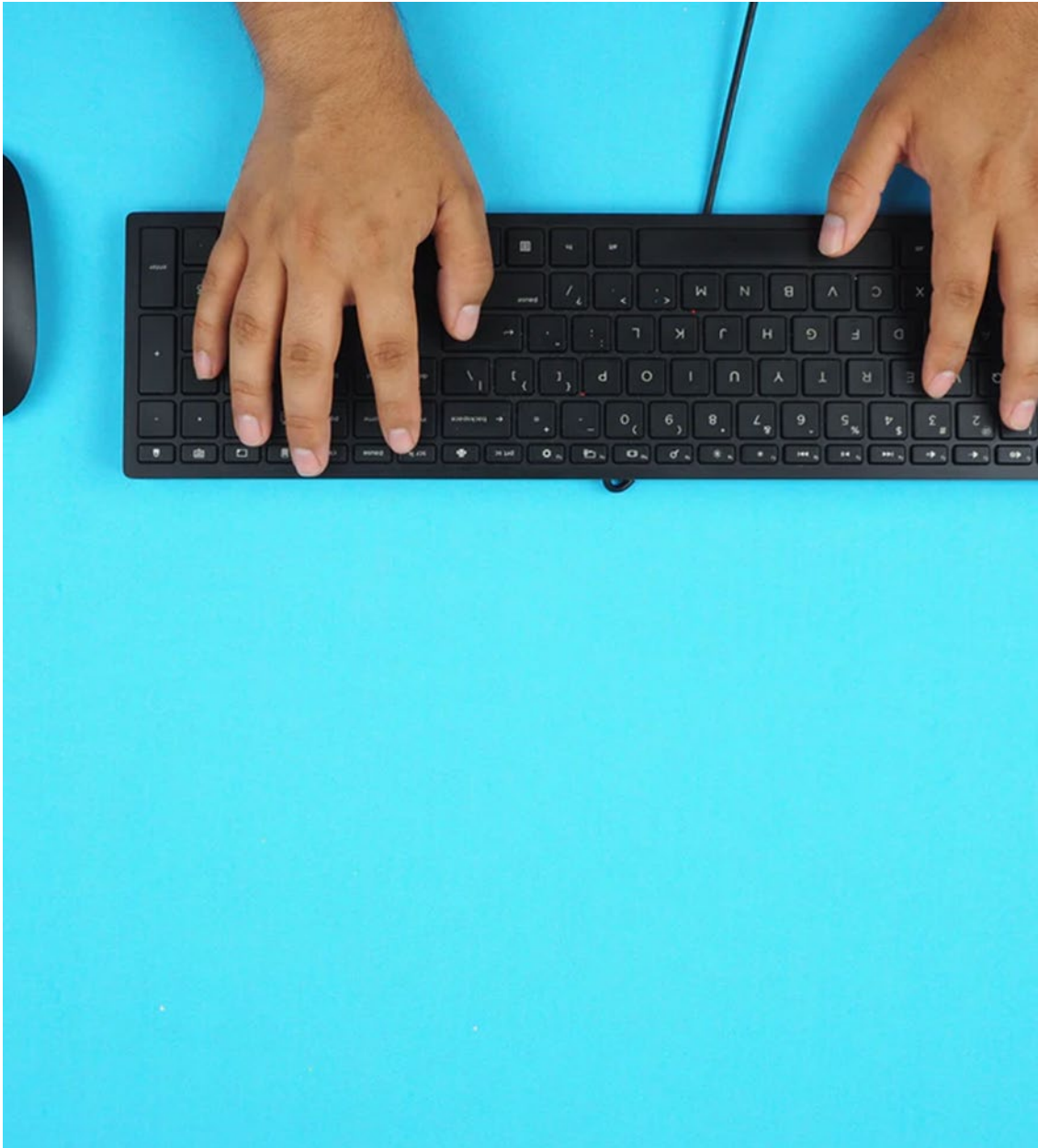
Retail & supply chain establishments should be safe & secure.



Crime has declined since permitting started—2018

How do we protect supply chain employees & customers?

How do we protect the surrounding neighborhood or area?



Community Comments

**What would a
safe and secure
retail
establishment
look like in a
successful
cannabis
program?**



We should be prepared for the possibility that onsite/social consumption will be allowed by State.



Coffee shops

Dispensaries

Tasting rooms

Consumption lounges

Cannabis clubs: Private membership model—monthly pass, daily membership

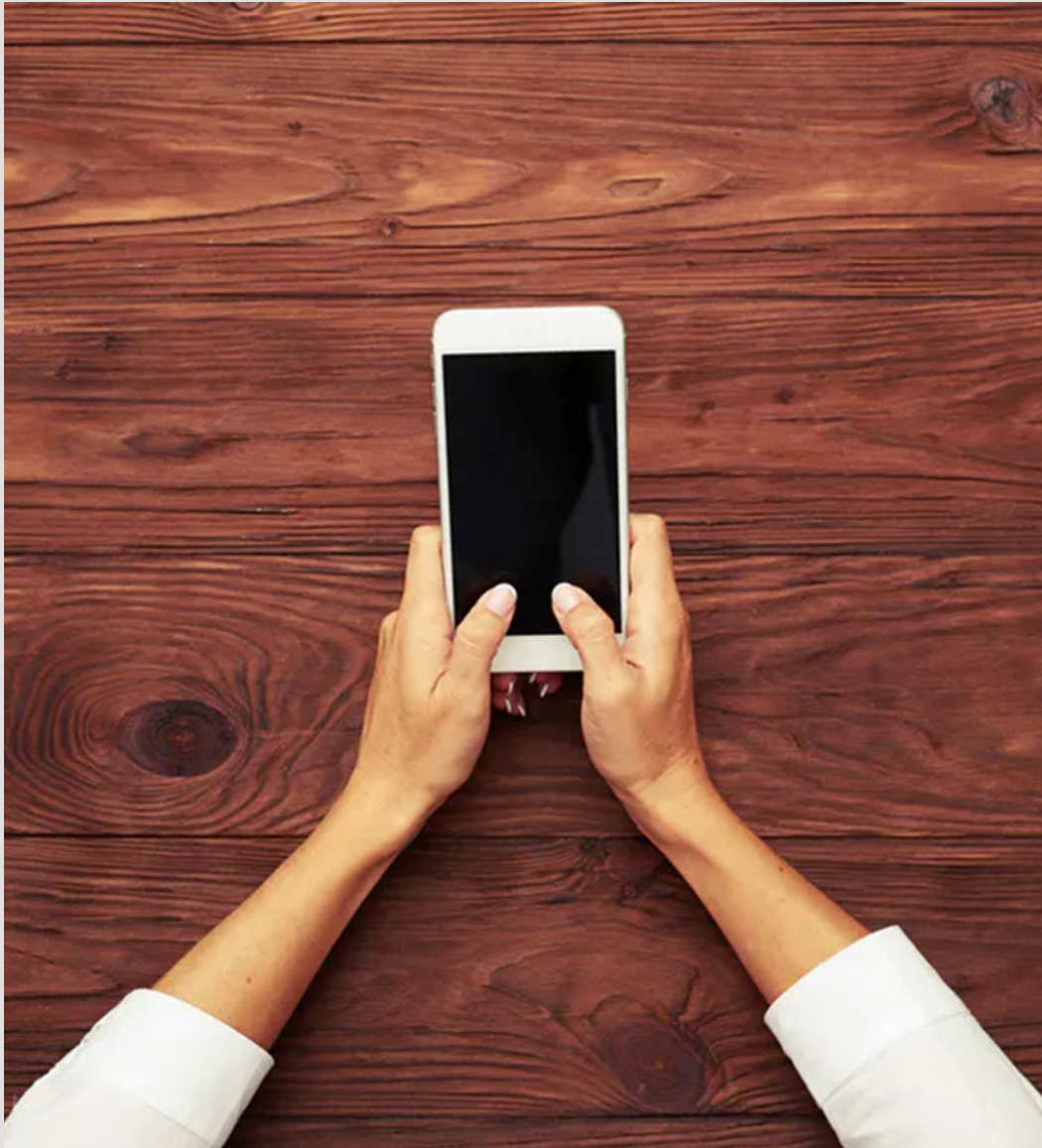
Lodging establishments

Event spaces

Art galleries

Mobile lounges

Tours of cultivation sites, dispensaries, lounges, cooking classes



Community Comments

- 1. If the state allows onsite/social consumption, what should be the most important things we prioritize when thinking about what should be allowed?**
- 2. If it is allowed, what would be an ideal site for onsite consumption?**



**Accountability is key
to our success.**



**Are structures in
compliance with
code?**

**Are operations in
compliance with
permit conditions &
standards?**

**How should we
respond to
complaints?**

**Self-reporting or
inspections?**



Community Comments

- 1. What does successful accountability look like when it comes to safety and cannabis?**
- 2. What would it mean to hold retail operations accountable?**
- 3. What would it mean to hold cannabis growers accountable?**





Community Comments

What additional thoughts do you have about successful safety measures to include in the new cannabis program?



Please send comments by 8 pm,
August 13, 2021, for them to be
included in the Visioning
Sessions Report for the Board.



**cannabis@
Sonoma-county.
org**

US Mail:

***Cannabis Program
575 Administration
Drive Ste. 104-A
Santa Rosa, CA
95403***

**Please stay
informed by
subscribing to:**

***sonomacounty.ca.gov
/Cannabis-Program***