



***Crafting
Sonoma
County's New
Cannabis
Program:***

Land Use

**Virtual Visioning
Session
August 9, 2021**





Why are we conducting these Visioning Sessions?

- 1. Develop a comprehensive update to the existing cannabis ordinance based on community input and a thorough Environmental Impact Report (EIR) (Sonoma County Board of Supervisors, June 8, 2021)***
- 2. The Supervisors have requested community engagement to inform the policy goals they will develop at their September 28 workshop.**
- 3. Visioning session topics: Land Use, Safety, Water, and Visual Considerations—the 4 most significant aspects of how a cannabis program impacts the community.**

New Sonoma County Cannabis Program Project Timeline





Sonoma County Staff Introducing Our Topics

**Permit Sonoma
Staff:**

Hannah Spencer

**Eduardo
Hernandez**

Nina Bellucci

**Visioning Session
Team**

**Crystal Acker,
Cannabis Project
Manager**

**Scott Orr, Permit
Sonoma, Deputy
Director**

**Patrick Dirden,
Timer &
PowerPoint**

**McCall Miller,
CAO's Office,
Tech Director &
Email Monitor**

**Julie Burns,
Spanish
Interpreter**

**Daniel Tamayo,
Spanish
Interpreter**

**B.J. Bischoff,
Co-Facilitator**

**Sarah Stierch,
Co-Facilitator**

Visioning Session Procedures

*Cannabis@
sonoma-
county.org*



Place all comments in the Q&A. We're saving the Chat to provide information for you, as needed.



We've de-activated the UpVote function (thumbs up). Reply directly to comments you like or disagree with.



If you cannot access us via Zoom, email us: cannabis@sonoma-county.org



Your comments will be summarized and presented to the Board of Supervisors



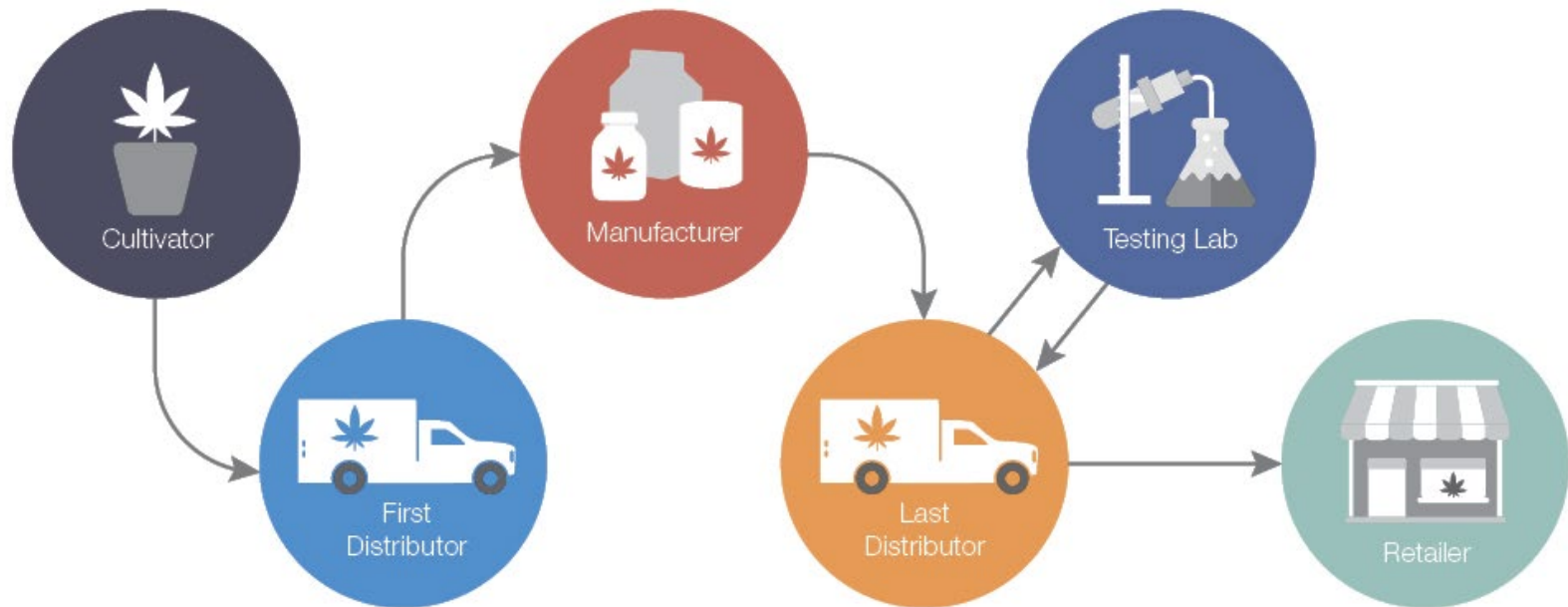
Today's session is being recorded



Please use respectful language.

Cannabis Supply Chain

The Cannabis Supply Chain in California



**Our shared values
shape our future.**



**Places where we should
& shouldn't grow
cannabis**

Sizes of cultivation areas

**Appropriately sized
operations**

Number of operations

Odor

Noise

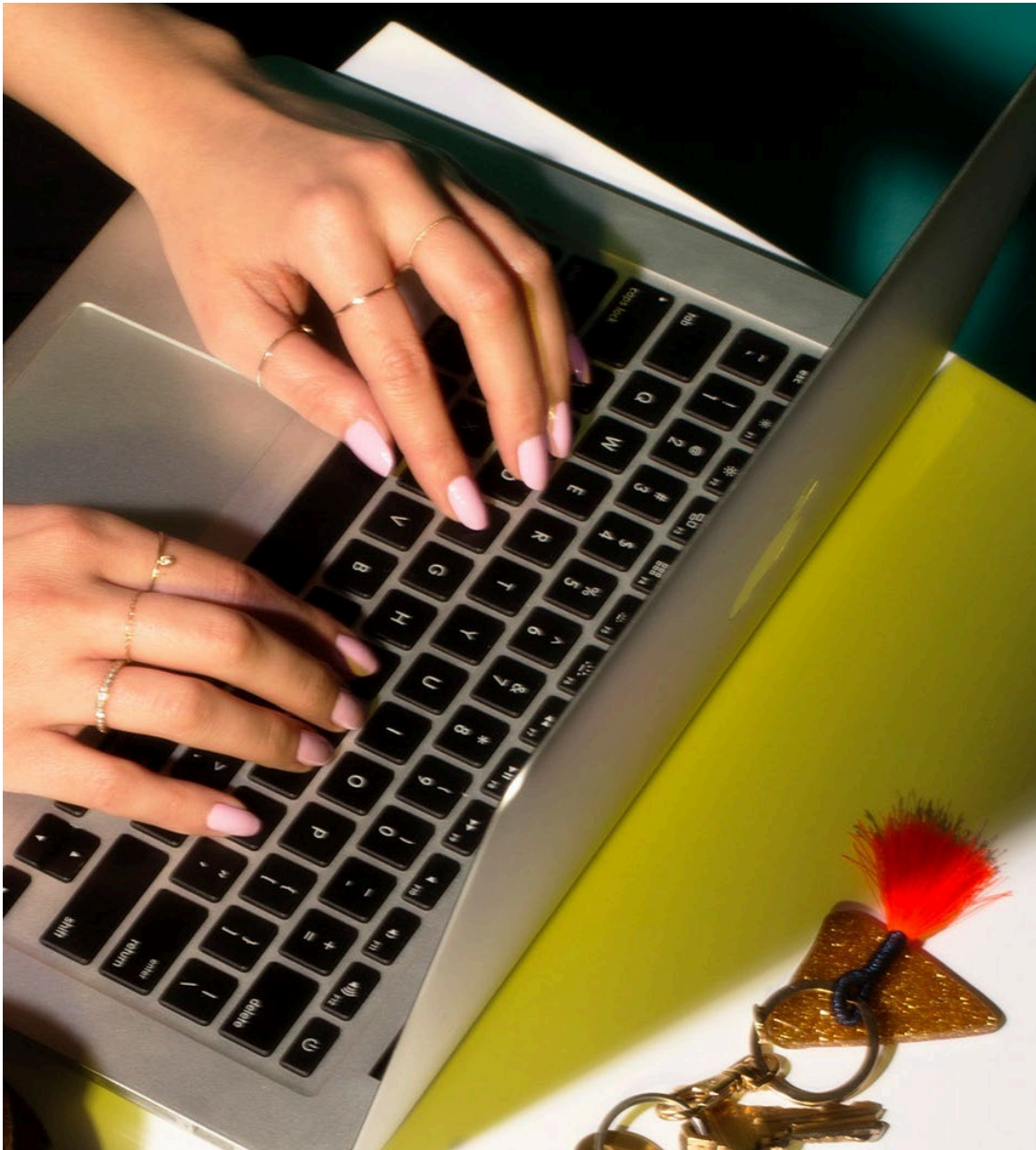
Accountability

The way we use our land in Sonoma County determines the quality of our lives.



Zoning:

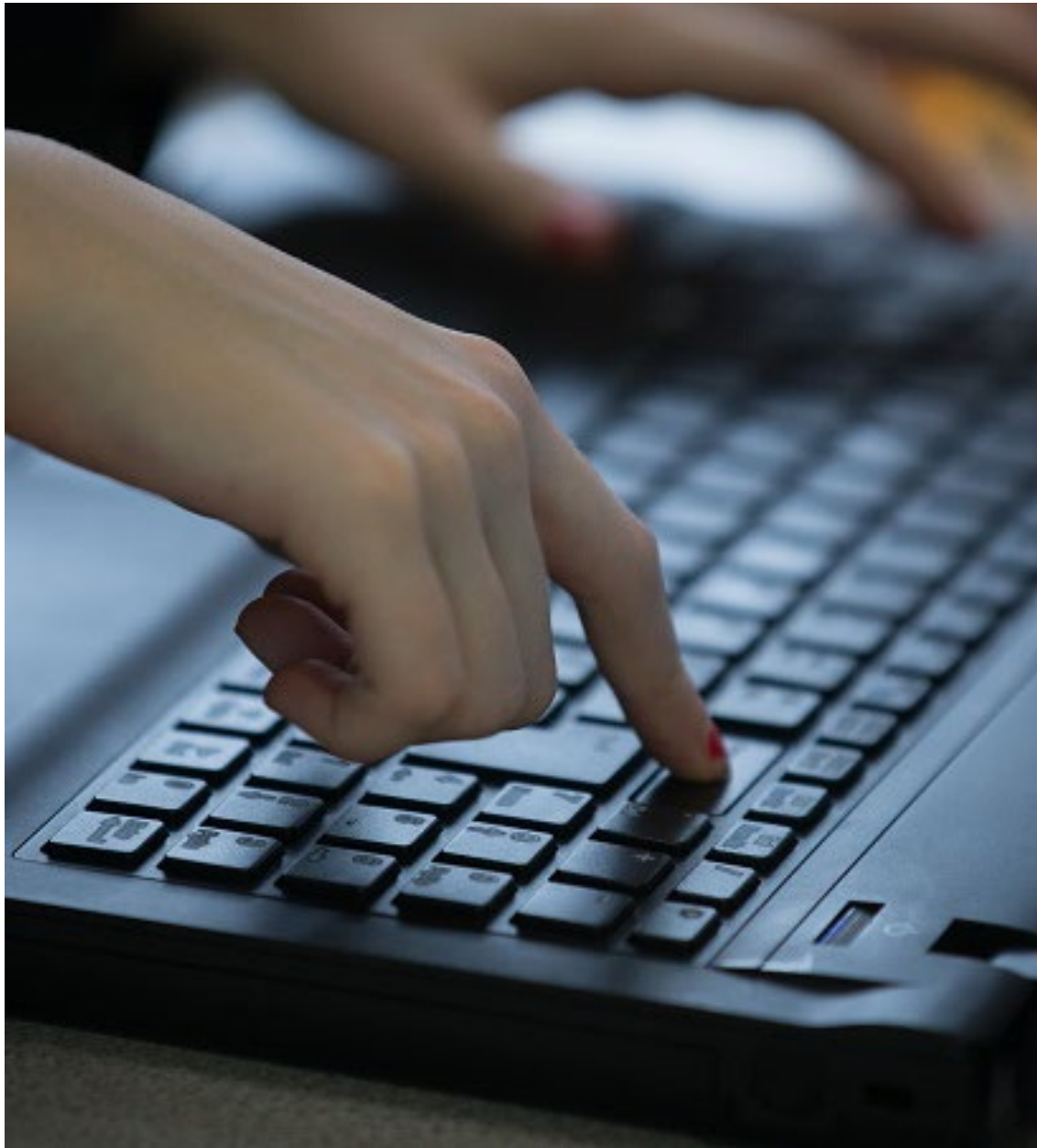
- Residential
 - Agriculture & Resource
 - Commercial
 - Industrial
- Rural & urban



Community Comments

What are the qualities and characteristics of places that wouldn't be a good fit for growing cannabis?





Community Comments

What are the qualities and characteristics of places that would be a good fit for growing cannabis?

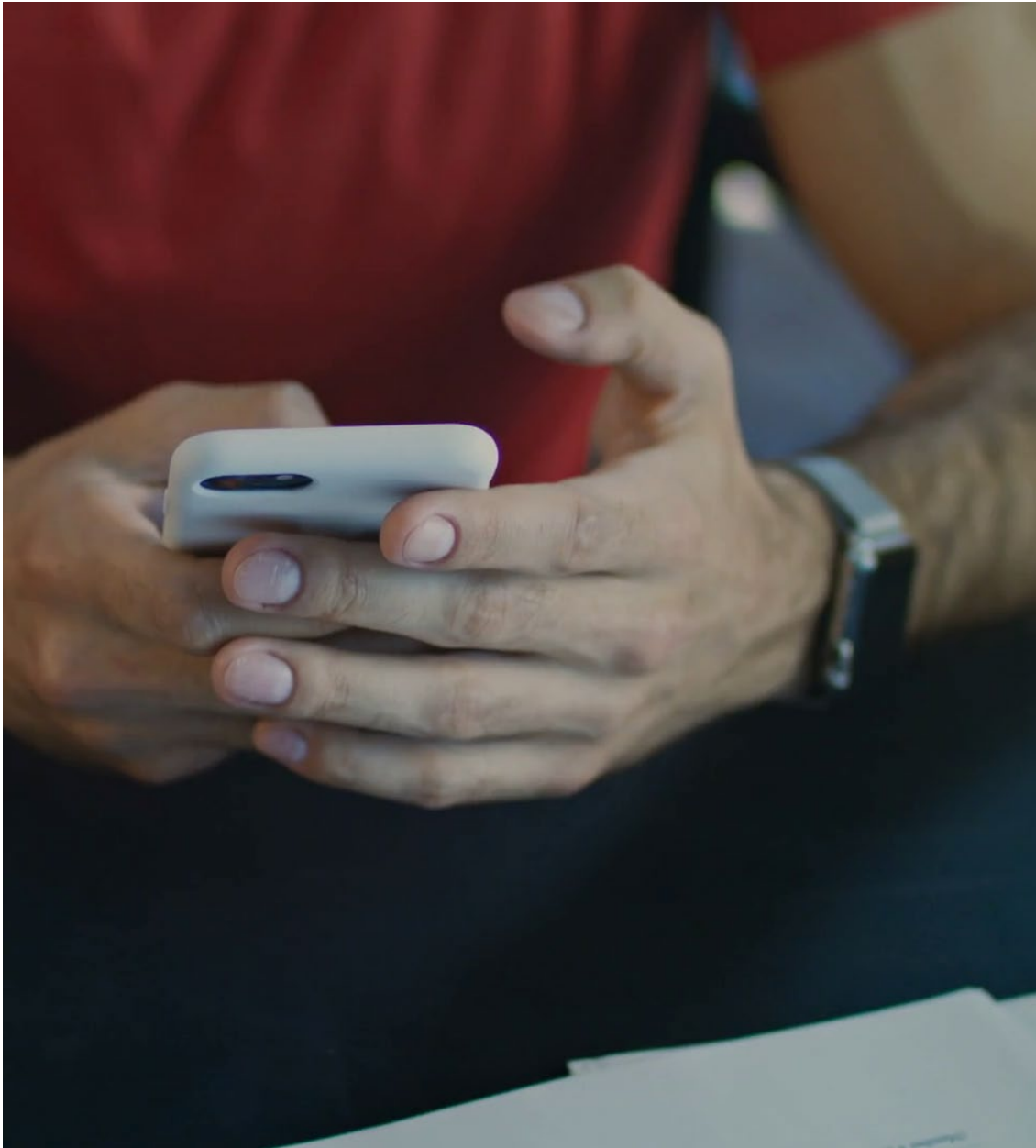


**It's important to decide
the ideal size for cannabis
cultivation areas.**



**How should
we measure
size?**

- **Plant canopy**
- **Cultivation structures**



Community Comments

1. What would an appropriately sized cannabis growing operation look like in a rural setting?
2. What would it look like in an industrial setting?
3. What characteristics would make an operation too big?

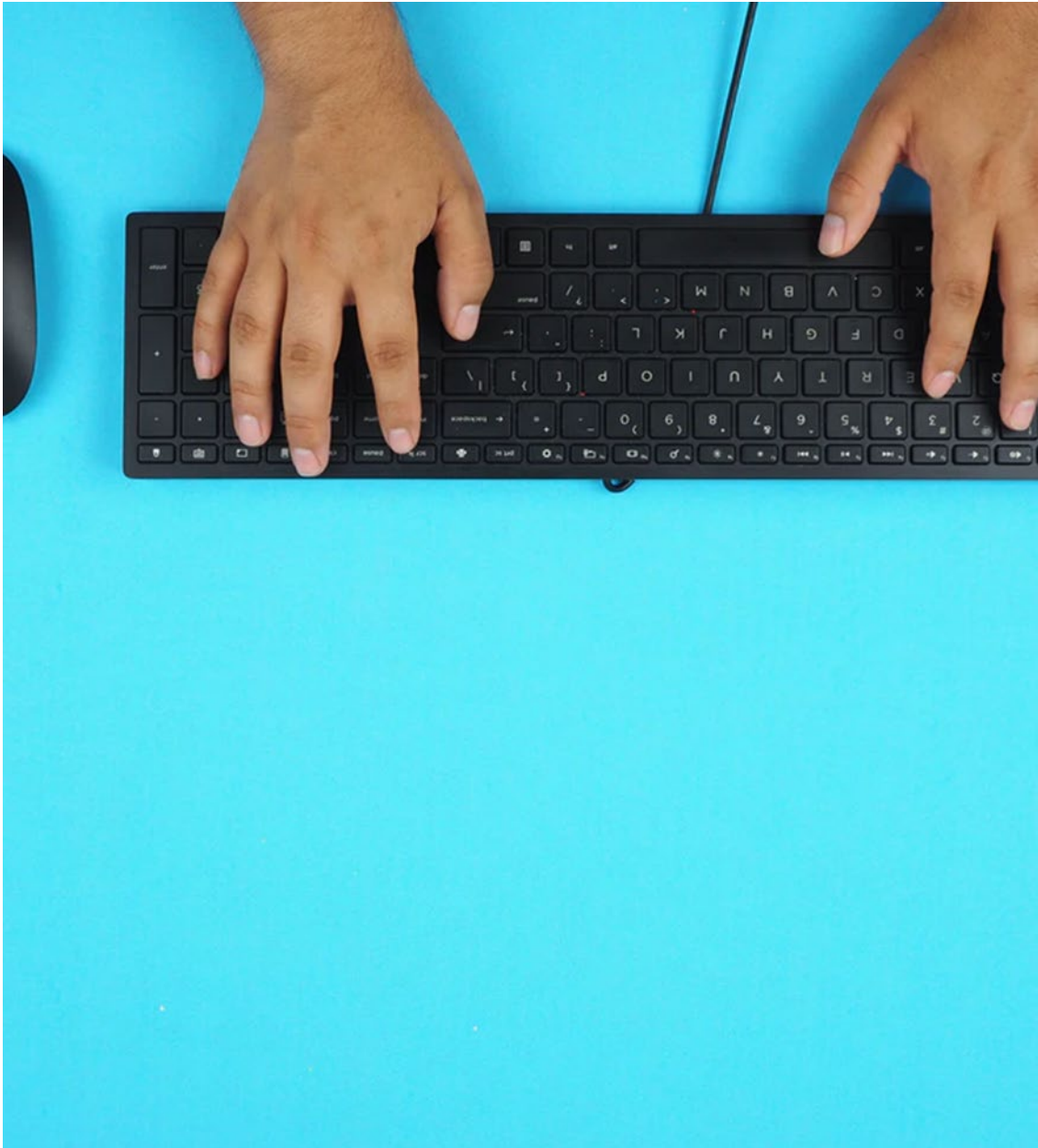


We need to decide how many is too many.



Let's think about impact:

- **Traffic**
- **Water Supply**
- **Rural Character**



Community Comments

**What would a
successful
distribution of
cannabis operations
look like?**

**What would too
many cannabis
operations look like?**



We need to think about odor.



Outdoor Cultivation

- **Odor dissipates with distance**

Indoor Cultivation

- **Ventilation and filtration systems can contain odor within buildings**

Supply Chain

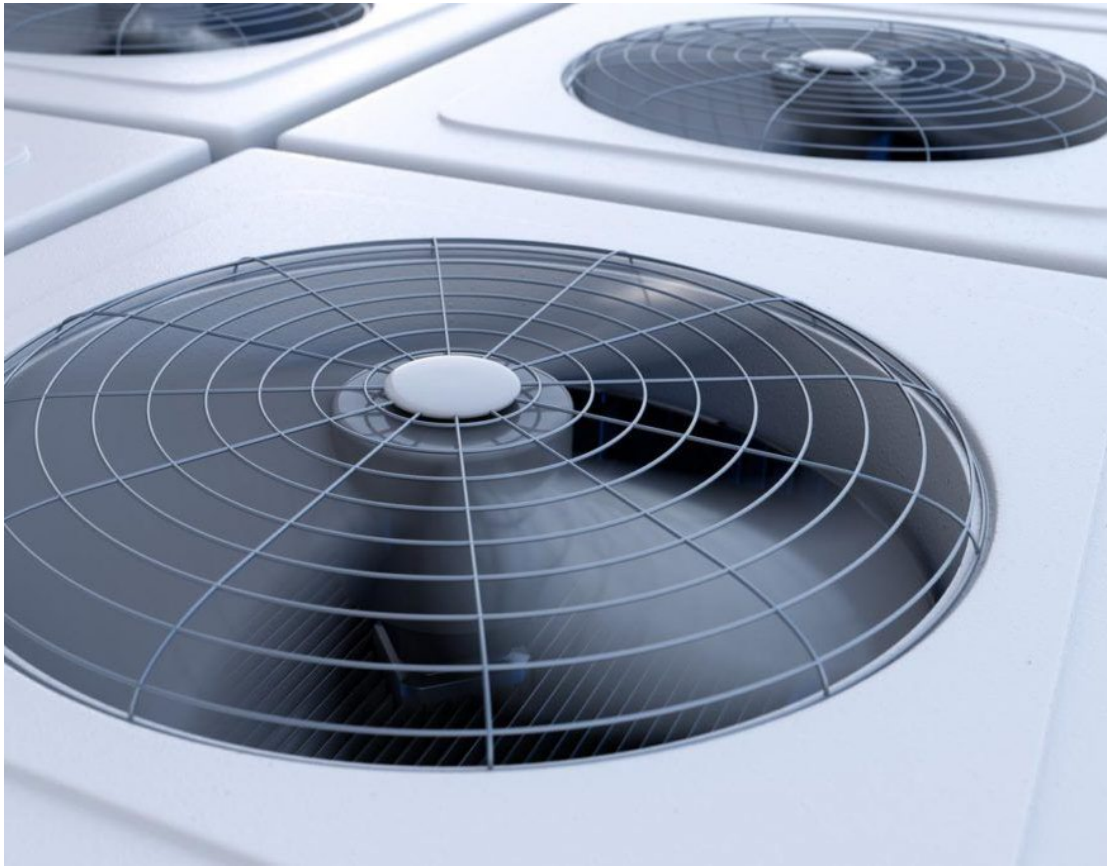
- **Packaged products**



Community Comments

**What would a
successful
growing
operation do to
control odor?**





**We need to think
about noise.**

**General Plan noise
limits**

**Typical noise
sources associated
with cannabis
operations**

- HVAC systems
- Vehicles

**Noise dissipates
with distance**

Community Comments

***What would a
successful
ordinance contain
to address any
noise produced
throughout the
cannabis supply
chain?***



**Accountability is key
to our success.**



**Monitoring
compliance with
standards &
conditions**

Reporting

Enforcement

Permit term



Community Comments

- 1. What does successful accountability look like when it comes to land use and cannabis?**
- 2. What would it mean to hold retail operations accountable?**
- 3. What would it mean to hold cannabis growers accountable?**





Community Comments

*What additional
thoughts do you
have about
successful land use
regarding the new
cannabis
program?*



Please send comments by 8 pm,
August 13, 2021, for them to be
included in the Visioning
Sessions Report for the Board.



**cannabis@
Sonoma-county.
org**

US Mail:

***Cannabis Program
575 Administration
Drive Ste. 104-A
Santa Rosa, CA
95403***

**Please stay
informed by
subscribing to:**

***sonomacounty.ca.gov
/Cannabis-Program***